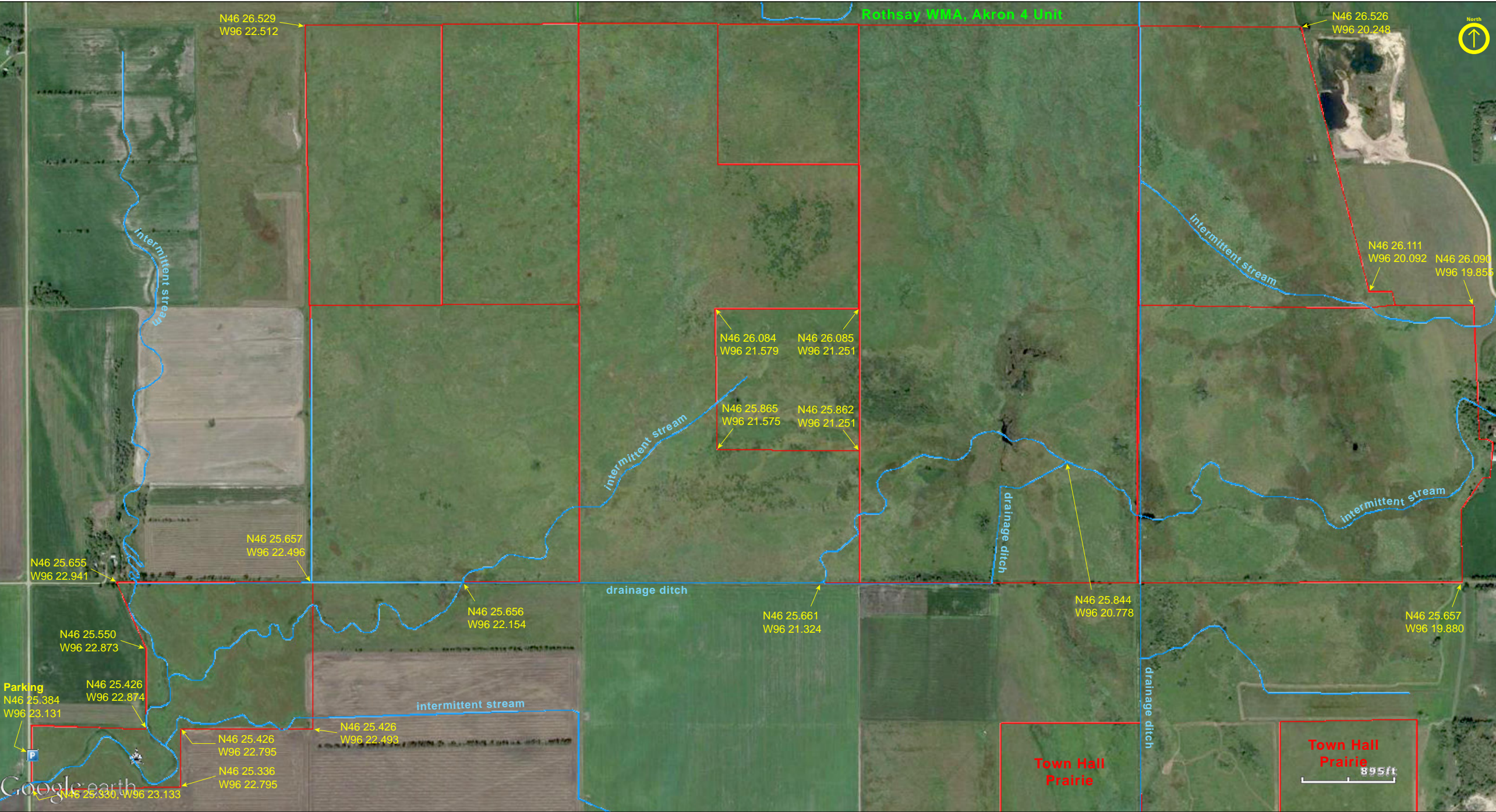


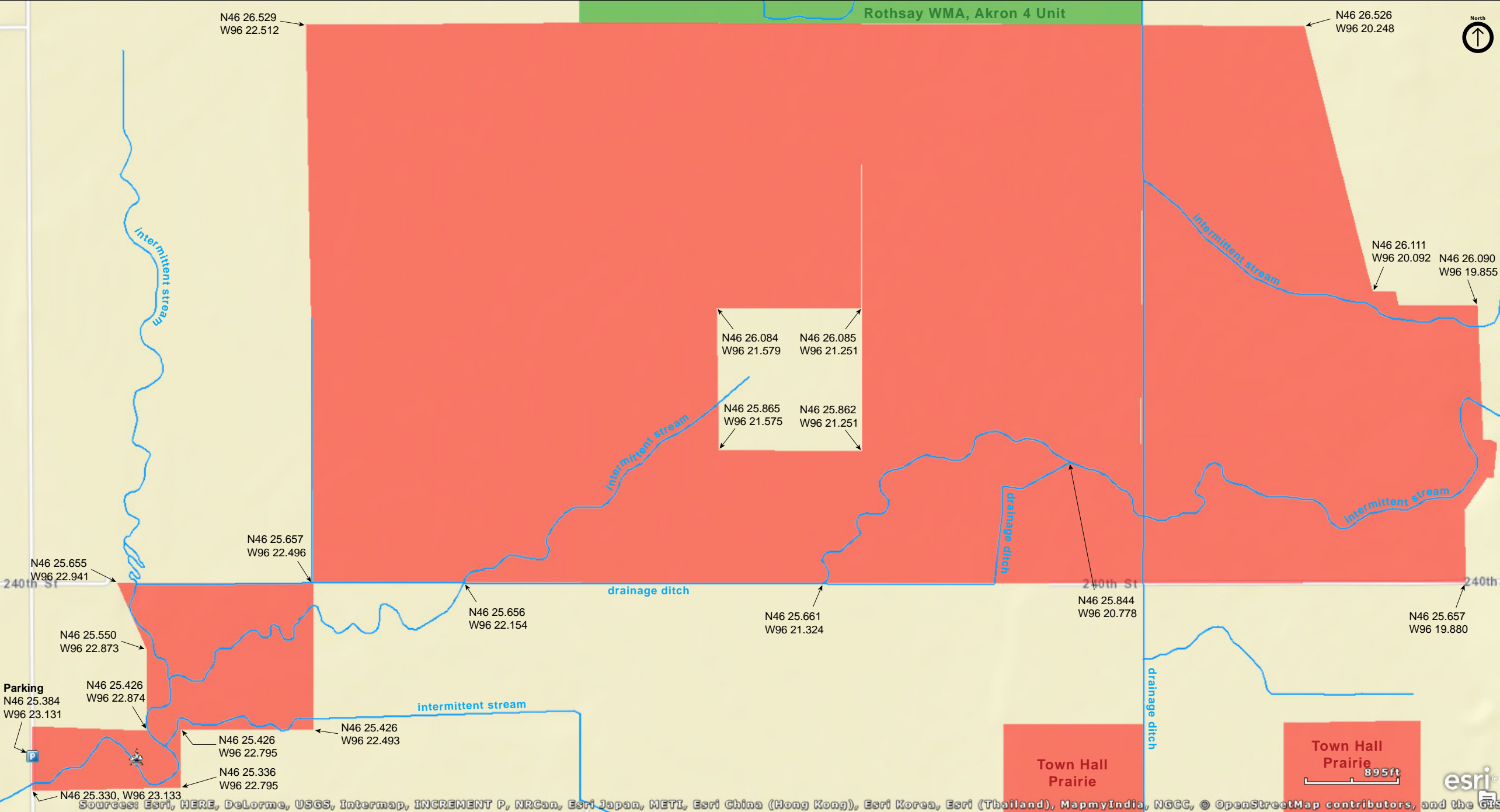
Anna Gronseth Prairie

Wilkin County



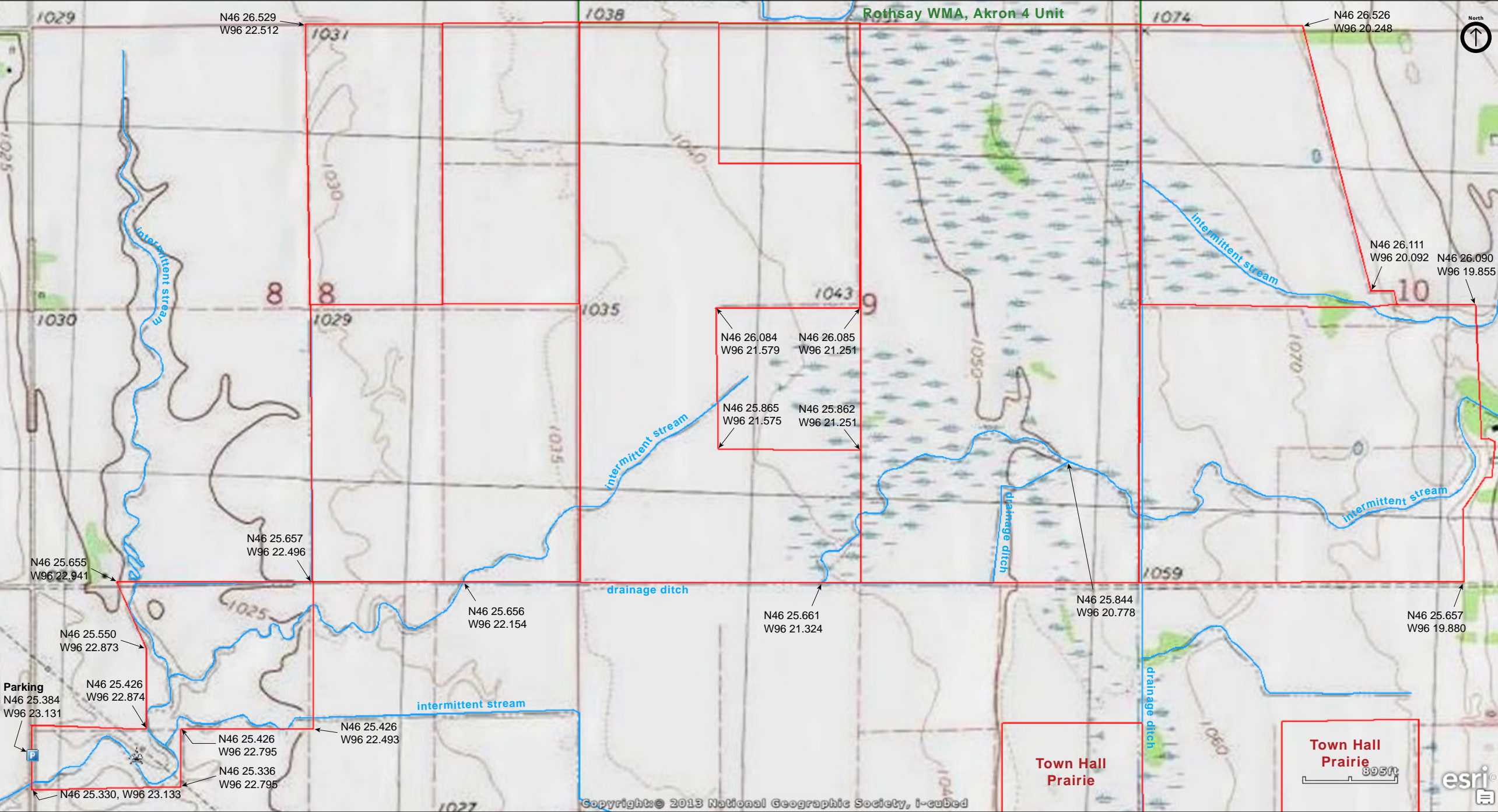
Anna Gronseth Prairie

Wilkin County



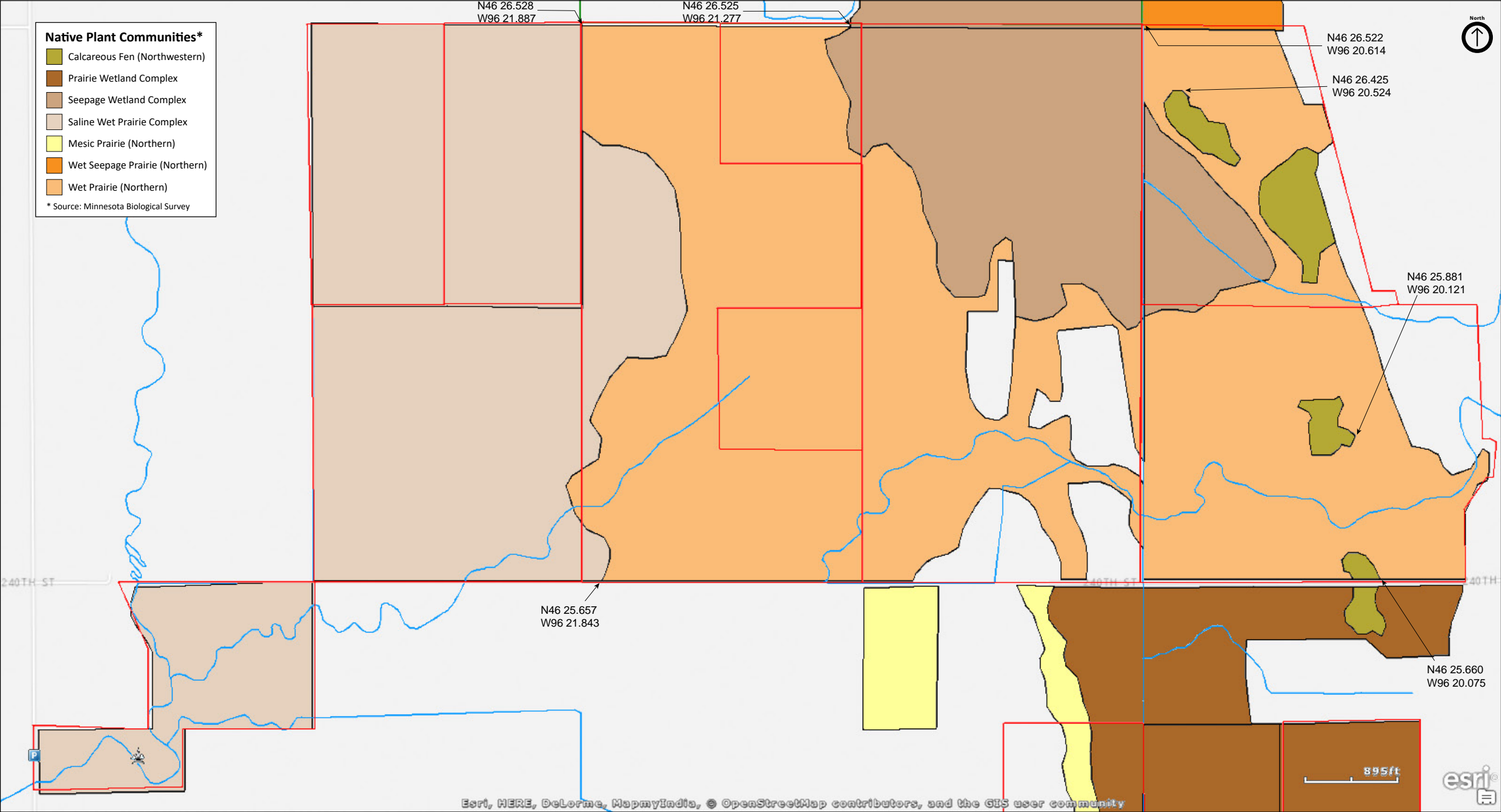
Anna Gronseth Prairie

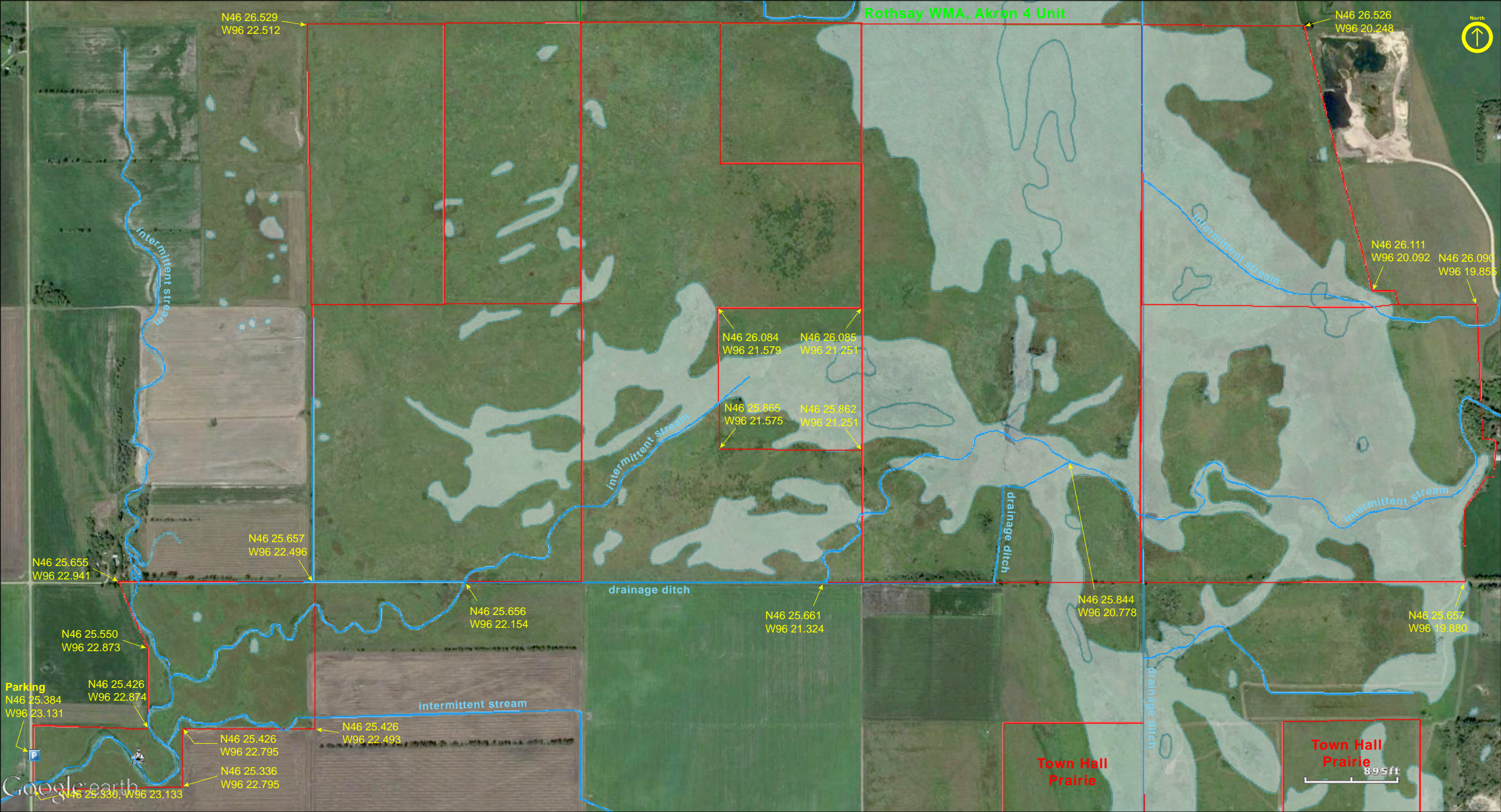
Wilkin County



Anna Gronseth Prairie

Wilkin County





Anna Gronseth Prairie

Directions from The Nature Conservancy

From Rothsay, travel west on County Route 26 for approximately 5 miles. Turn south on Route 169 and travel for approximately 3.25 miles. Park along the road on the west edge of the preserve. Nearest services are in Rothsay.

Notes from MinnesotaSeasons.com

Parking

N46 25.384, W96 23.131

There is no designated parking spot. Park along the shoulder of the road on 290th Ave. Do not block the nearby field access. It is not part of the preserve.

History

The Nature Conservancy (TNC) purchased 160 acres from Anna Gronseth in November, 1973, and named it Anna Gronseth Prairie. Between December, 1973 and March, 1999, THC made at least seven more acquisitions, each time enlarging this preserve. In 1993 TNC transferred a 648 acre parcel to the Minnesota DNR which became the Akron 4 Unit of the Rothsay Wildlife Management Area.

Wet Prairie

To get from the parking spot to the main portion of the preserve visitors will need to cross an intermittent stream and a drainage ditch. Many areas of the saline wet prairie complex will have some standing water in wet years, as in 2015. Waterproof footwear is recommended.

DISCLAIMER OF WARRANTIES AND LIMITATIONS OF LIABILITY

MinnesotaSeasons.com, The Nature Conservancy, U.S. Department of Agriculture, Forest Service, U.S. Fish and Wildlife Service, the state of Minnesota, the Minnesota Department of Natural Resources, and their employees, make no representations or warranties, express or implied, with respect to the use of or reliance on the data provided herewith, regardless of its format or means of transmission. There are no guarantees or representations to the user as to the accuracy, currency, completeness, suitability or reliability of this data for any purpose. THE USER ACCEPTS THE DATA AND/OR SOFTWARE "AS IS" AND ASSUMES ALL RISKS ASSOCIATED WITH ITS USE.

IN NO EVENT SHALL MINNESOTASEASONS.COM, TNC, USDA-FS, USFWS, OR MNDNR BE LIABLE FOR ANY DIRECT, INDIRECT, INCIDENTAL, SPECIAL, EXEMPLARY, OR CONSEQUENTIAL DAMAGES (INCLUDING, BUT NOT LIMITED TO, PROCUREMENT OF SUBSTITUTE GOODS OR SERVICES; LOSS OF USE, DATA, OR PROFITS; OR BUSINESS INTERRUPTION) HOWEVER CAUSED AND ON ANY THEORY OF LIABILITY, WHETHER IN CONTRACT, STRICT LIABILITY, OR TORT (INCLUDING NEGLIGENCE OR OTHERS) ARISING IN ANY WAY OUT OF THE USE OF THIS DATA, EVEN IF ADVISED OF THE POSSIBILITY OF SUCH DAMAGE OR FOR ANY CLAIM BY ANY OTHER PARTY.

Your use of the data is acceptance on your part of the terms and conditions set forth herein.