

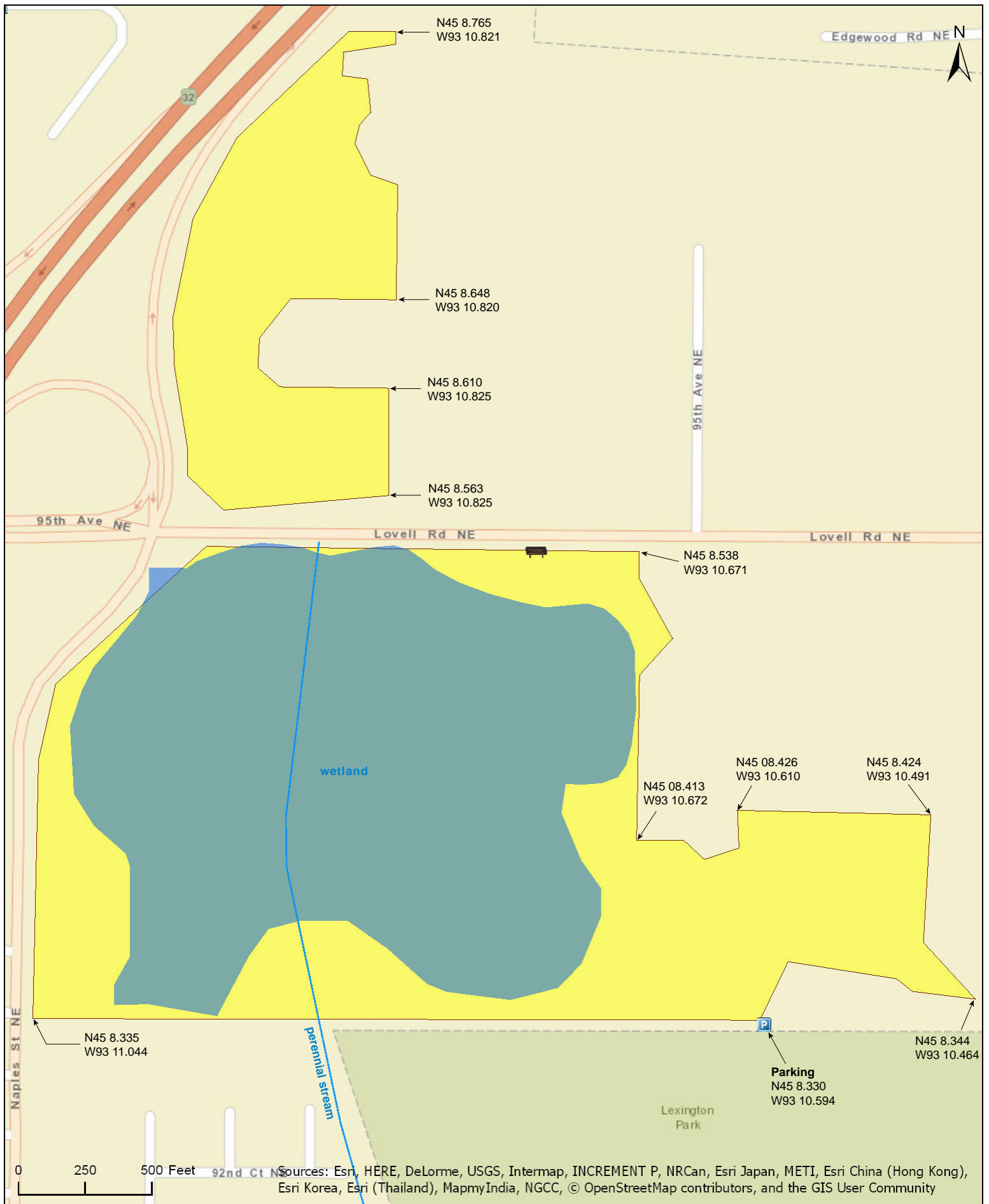
Blaine Preserve SNA

Anoka County



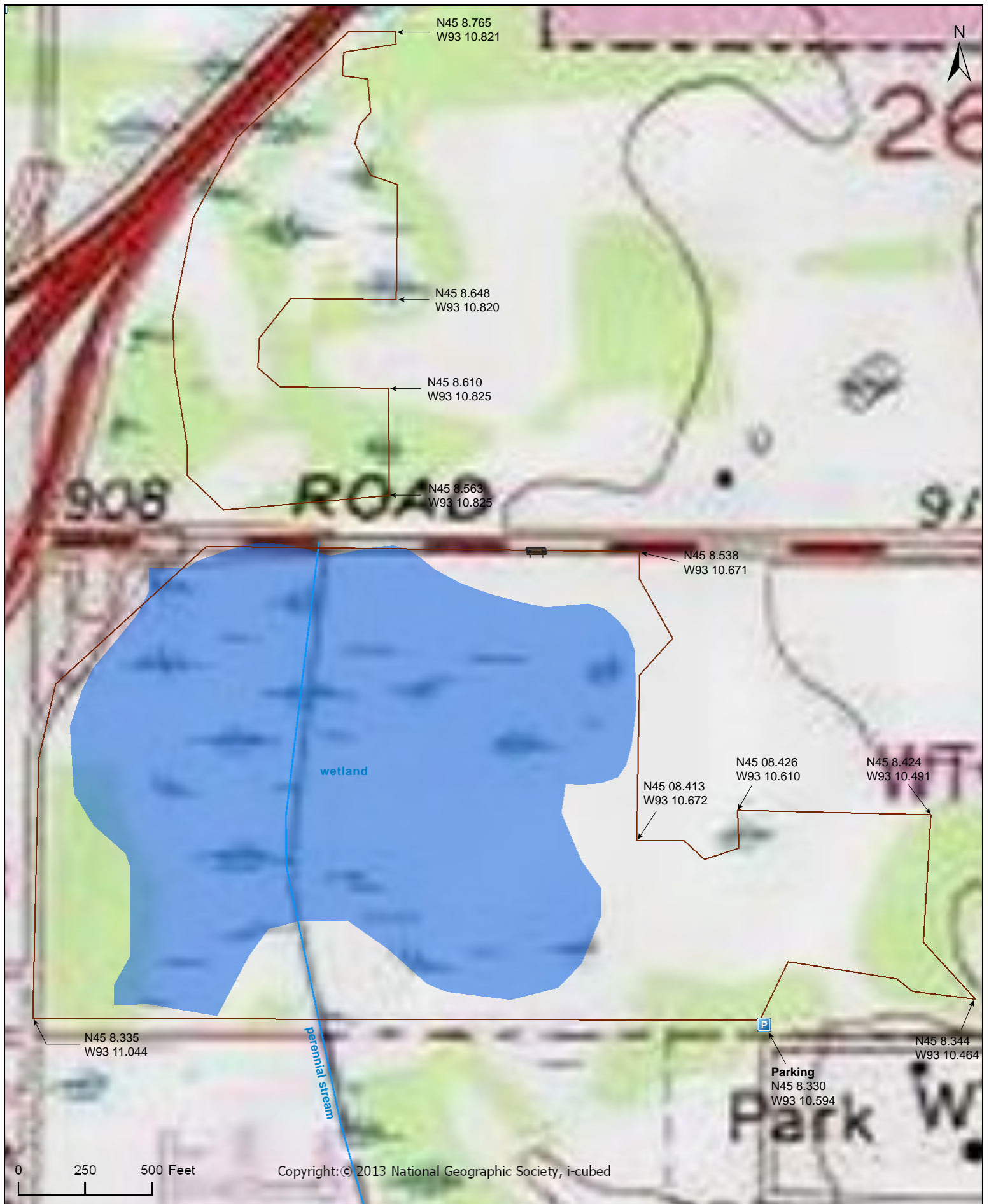
Blaine Preserve SNA

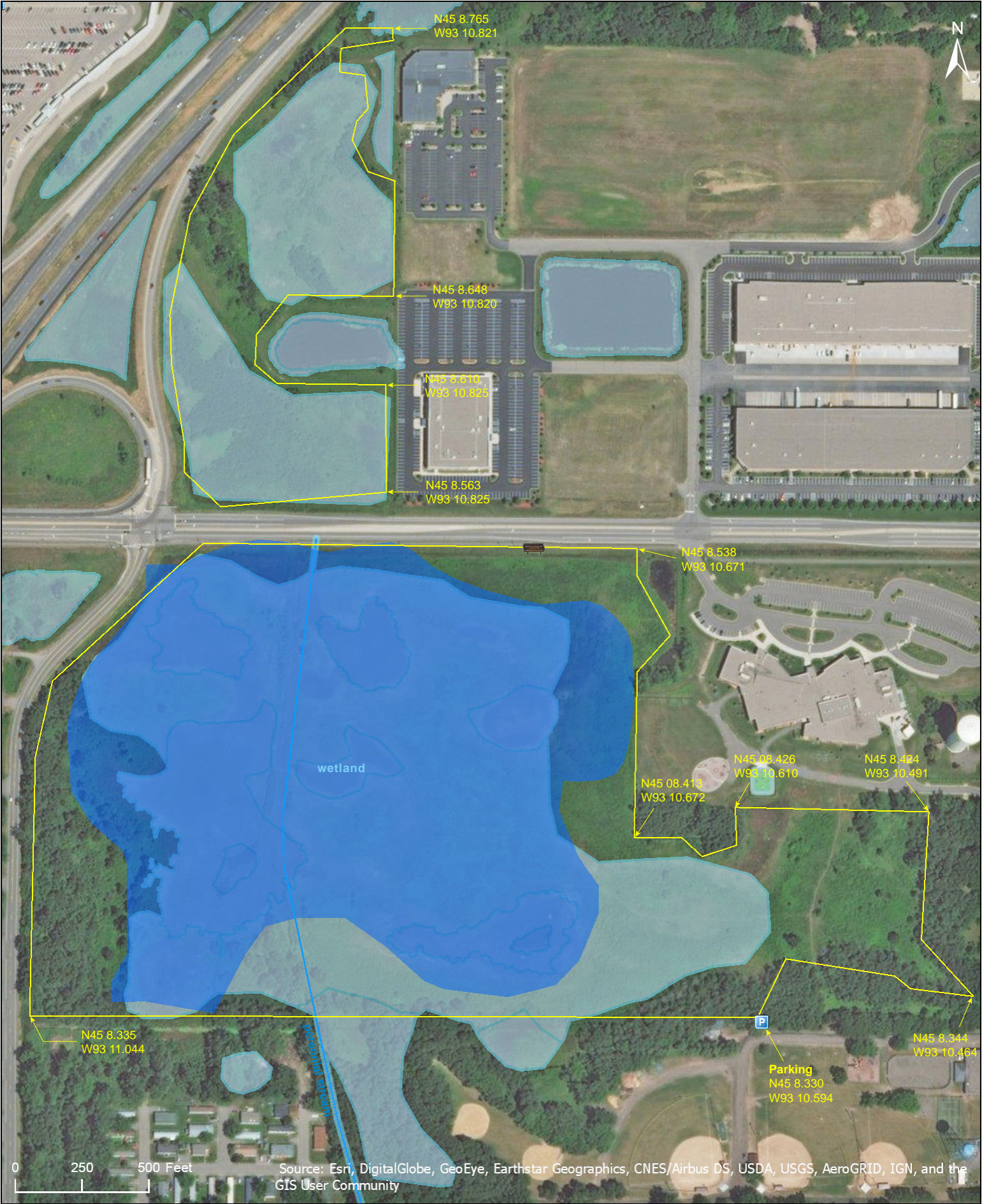
Anoka County



Blaine Preserve SNA

Anoka County





Blaine Preserve SNA

Directions and Notes from Minnesota DNR

Directions: In Blaine, from I-35W exit at 95th Ave (Co Rd 52), then 0.5 mile E on 95th/Lovell Rd, then 0.25 mile S on Hamline Ave. Then 0.1 mile W into Lexington Memorial Park. Park and hike N into site.

Lat/Lon: 45.138828, -93.176572

This site has no maintained trails or other recreational facilities.

Notes from MinnesotaSeasons.com

Parking

Lexington Memorial Park
N45 8.316, W93 10.601

This relatively new Scientific and Natural Area was officially designated June 27, 2011. The 64-acre site consists of two units separated by Lovell Road (County Road 52). It is mostly low wetland with areas of mesic prairie and oak woodland. Some parts of the site get a great amount of use and have well-worn footpaths. Other areas are relatively untrammelled, with faint paths used mostly by deer, amateur naturalists, and the site steward.

Hiking Trails

This SNA is in a busy suburb and is often visited by local residents. There is a very well worn footpath beginning 75 yards east of the parking area. It leads north 100 yards then west, through the SNA, to a ball field near the northwest corner of Lexington Memorial Park.

DISCLAIMER OF WARRANTIES AND LIMITATIONS OF LIABILITY

MinnesotaSeasons.com, The Nature Conservancy, U.S. Department of Agriculture, Forest Service, U.S. Fish and Wildlife Service, the state of Minnesota, the Minnesota Department of Natural Resources, and their employees, make no representations or warranties, express or implied, with respect to the use of or reliance on the data provided herewith, regardless of its format or means of transmission. There are no guarantees or representations to the user as to the accuracy, currency, completeness, suitability or reliability of this data for any purpose. THE USER ACCEPTS THE DATA AND/OR SOFTWARE "AS IS" AND ASSUMES ALL RISKS ASSOCIATED WITH ITS USE.

IN NO EVENT SHALL MINNESOTASEASONS.COM, TNC, USDA-FS, USFWS, OR MNDNR BE LIABLE FOR ANY DIRECT, INDIRECT, INCIDENTAL, SPECIAL, EXEMPLARY, OR CONSEQUENTIAL DAMAGES (INCLUDING, BUT NOT LIMITED TO, PROCUREMENT OF SUBSTITUTE GOODS OR SERVICES; LOSS OF USE, DATA, OR PROFITS; OR BUSINESS INTERRUPTION) HOWEVER CAUSED AND ON ANY THEORY OF LIABILITY, WHETHER IN CONTRACT, STRICT LIABILITY, OR TORT (INCLUDING NEGLIGENCE OR OTHERS) ARISING IN ANY WAY OUT OF THE USE OF THIS DATA, EVEN IF ADVISED OF THE POSSIBILITY OF SUCH DAMAGE OR FOR ANY CLAIM BY ANY OTHER PARTY.

Your use of the data is acceptance on your part of the terms and conditions set forth herein.