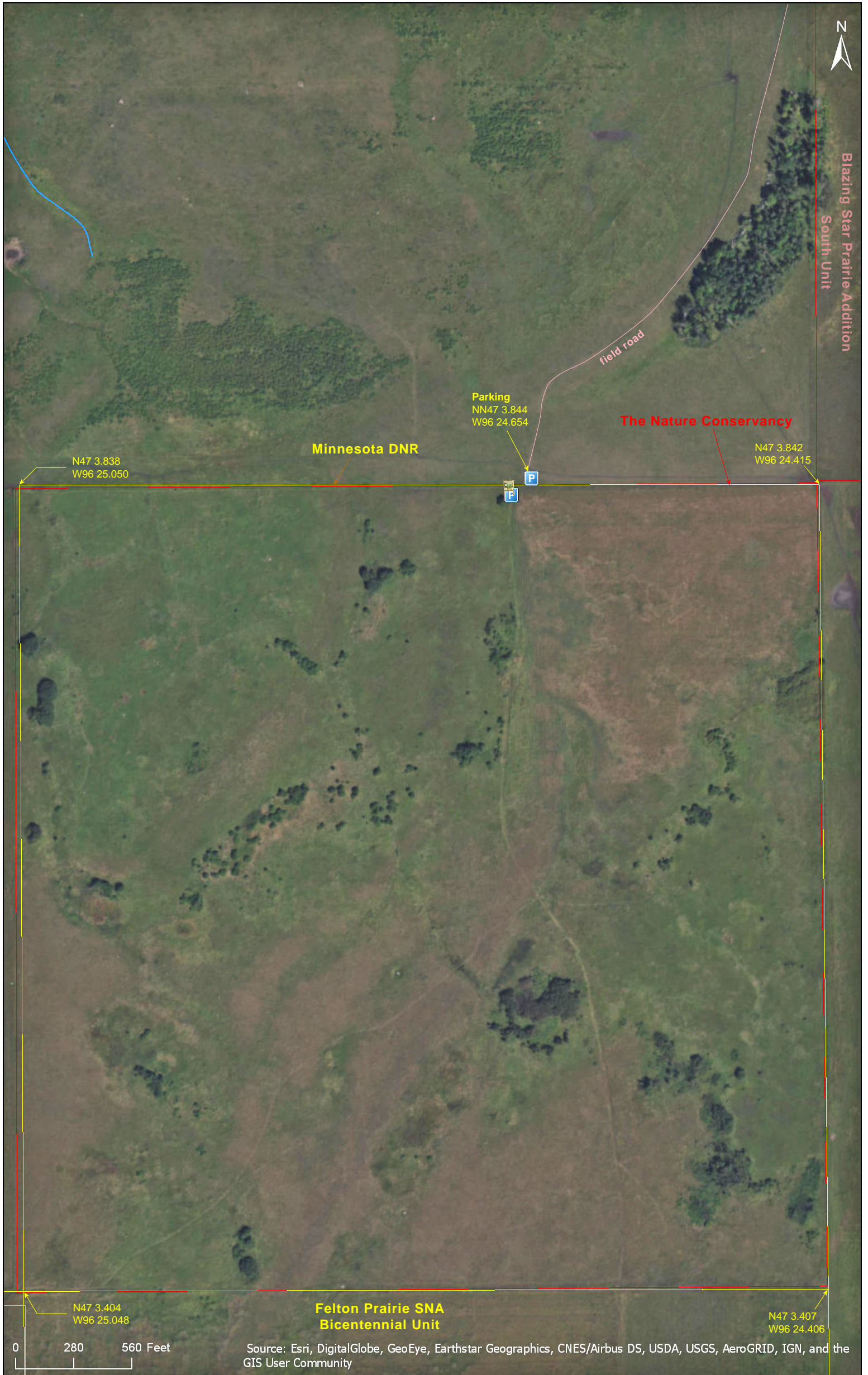


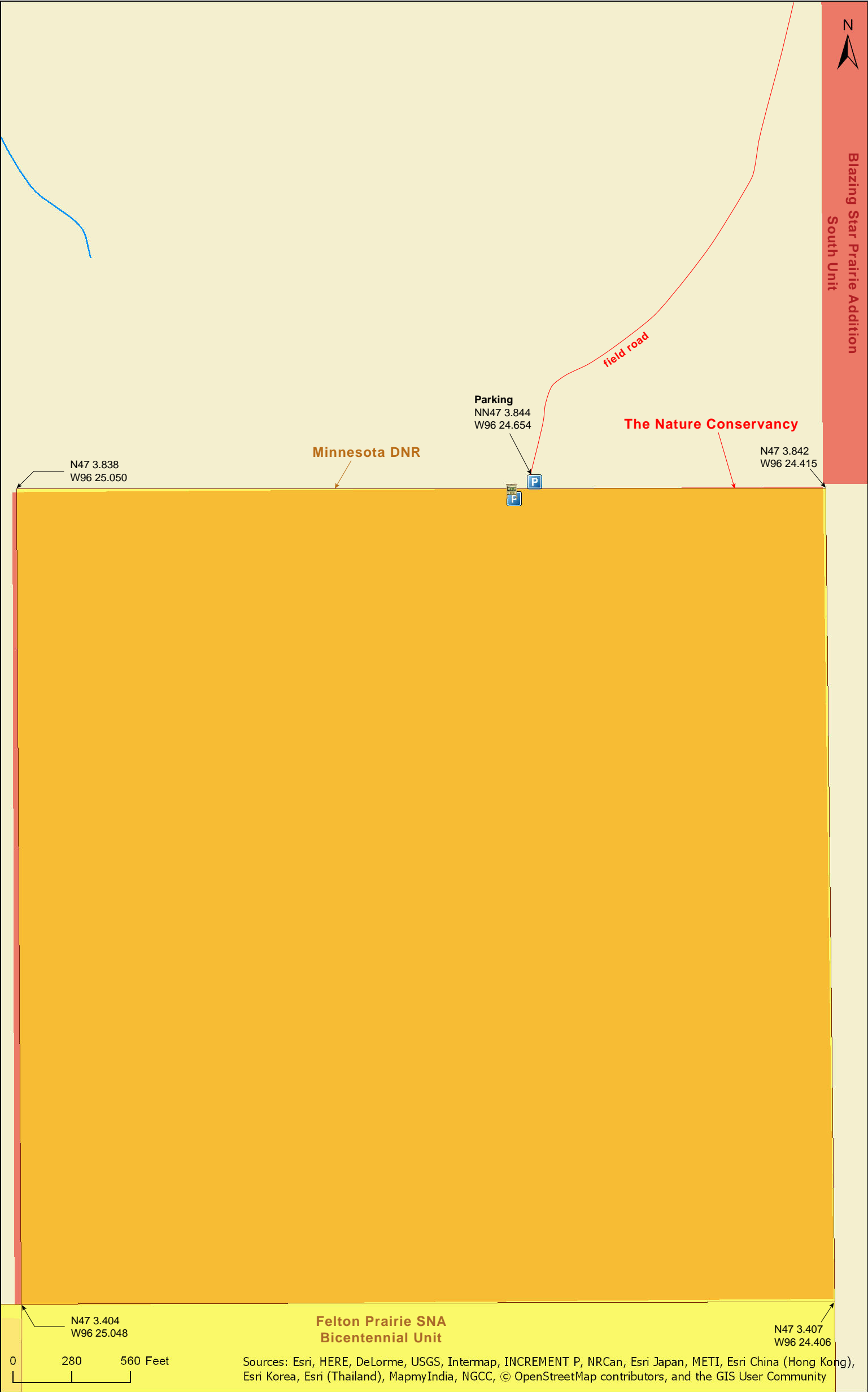
# Blazing Star Prairie

Clay County



Blazing Star Prairie

Clay County





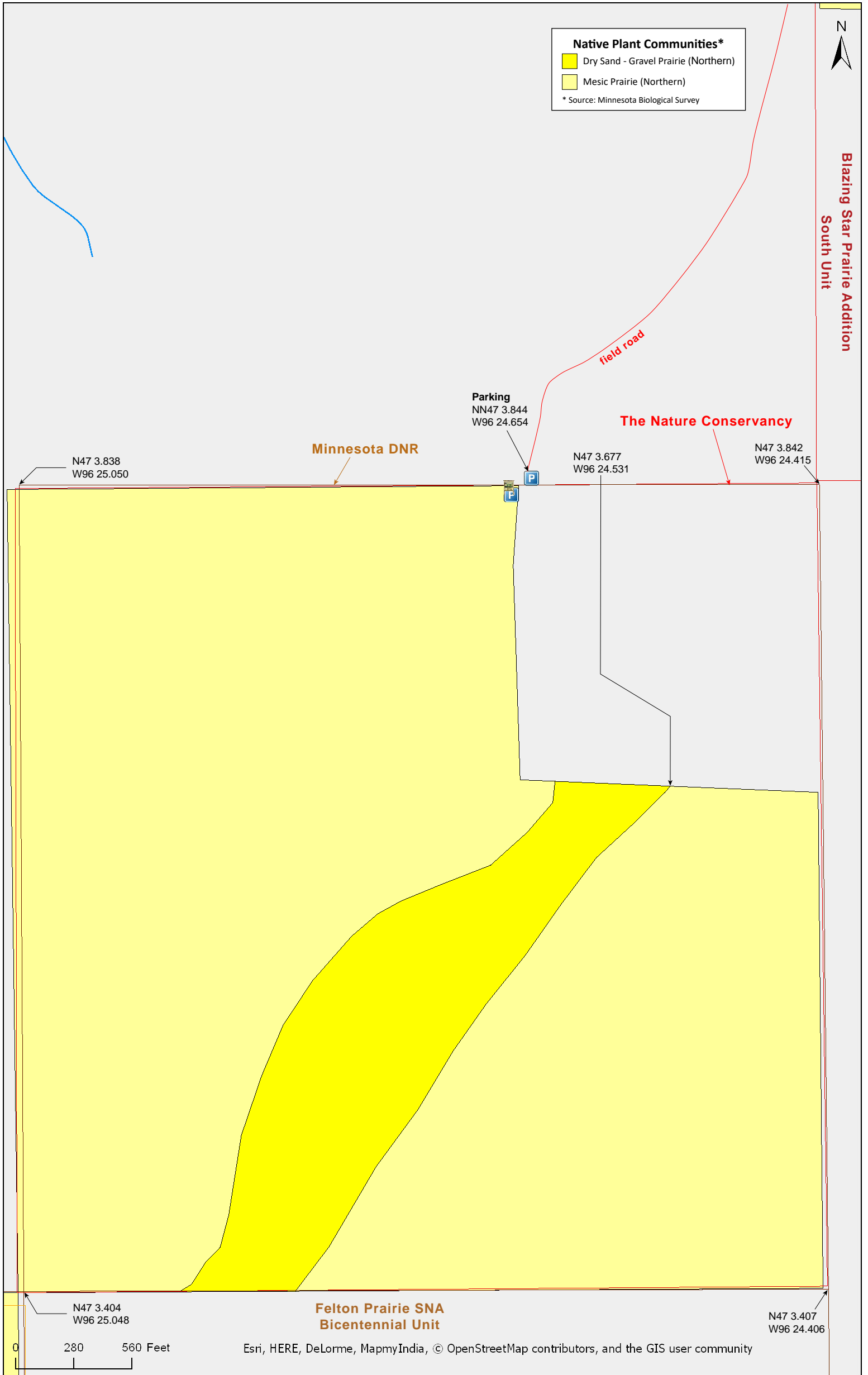
# Blazing Star Prairie

Clay County



# Blazing Star Prairie

Clay County







# Blazing Star Prairie

## **Directions and Notes from The Nature Conservancy**

Blazing Star Prairie is located southeast of Felton. From Felton drive four miles east on County Road 34. Then turn south on an unimproved township line road and travel south one mile to the north boundary of the preserve. Park on the side of the road. Nearest services are in Felton, Ulen, Glyndon and Ada.

## **Notes from MinnesotaSeasons.com**

### **Parking**

N47 3.844, W96 24.654

### **Getting There**

From County Road 34, turn south on 190th St. N., an unimproved township road. Drive over the cattle crossing and continue south on the two-track field road one mile to a gated fence and the Blazing Star Prairie interpretive sign.

There is a cattle pen and a gate across the township road just beyond the cattle crossing. If the gate is open, follow the instructions above. If the gate is closed, park at the Bicentennial Unit and walk northwest to Blazing Star Prairie.

## **DISCLAIMER OF WARRANTIES AND LIMITATIONS OF LIABILITY**

MinnesotaSeasons.com, The Nature Conservancy, U.S. Department of Agriculture, Forest Service, U.S. Fish and Wildlife Service, the state of Minnesota, the Minnesota Department of Natural Resources, and their employees, make no representations or warranties, express or implied, with respect to the use of or reliance on the data provided herewith, regardless of its format or means of transmission. There are no guarantees or representations to the user as to the accuracy, currency, completeness, suitability or reliability of this data for any purpose. THE USER ACCEPTS THE DATA AND/OR SOFTWARE "AS IS" AND ASSUMES ALL RISKS ASSOCIATED WITH ITS USE.

IN NO EVENT SHALL MINNESOTASEASONS.COM, TNC, USDA-FS, USFWS, OR MNDNR BE LIABLE FOR ANY DIRECT, INDIRECT, INCIDENTAL, SPECIAL, EXEMPLARY, OR CONSEQUENTIAL DAMAGES (INCLUDING, BUT NOT LIMITED TO, PROCUREMENT OF SUBSTITUTE GOODS OR SERVICES; LOSS OF USE, DATA, OR PROFITS; OR BUSINESS INTERRUPTION) HOWEVER CAUSED AND ON ANY THEORY OF LIABILITY, WHETHER IN CONTRACT, STRICT LIABILITY, OR TORT (INCLUDING NEGLIGENCE OR OTHERS) ARISING IN ANY WAY OUT OF THE USE OF THIS DATA, EVEN IF ADVISED OF THE POSSIBILITY OF SUCH DAMAGE OR FOR ANY CLAIM BY ANY OTHER PARTY.

Your use of the data is acceptance on your part of the terms and conditions set forth herein.