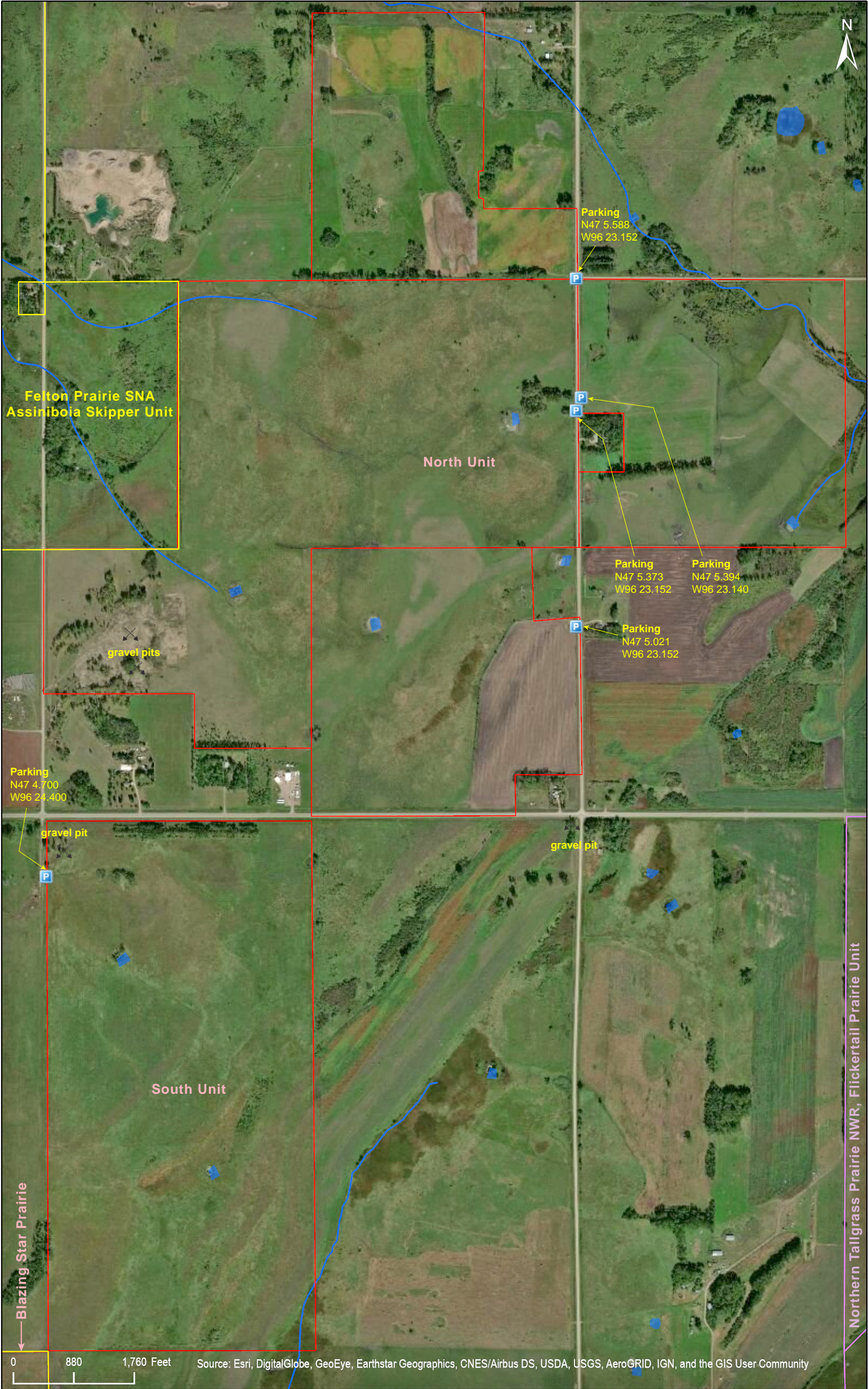


Blazing Star Prairie Addition

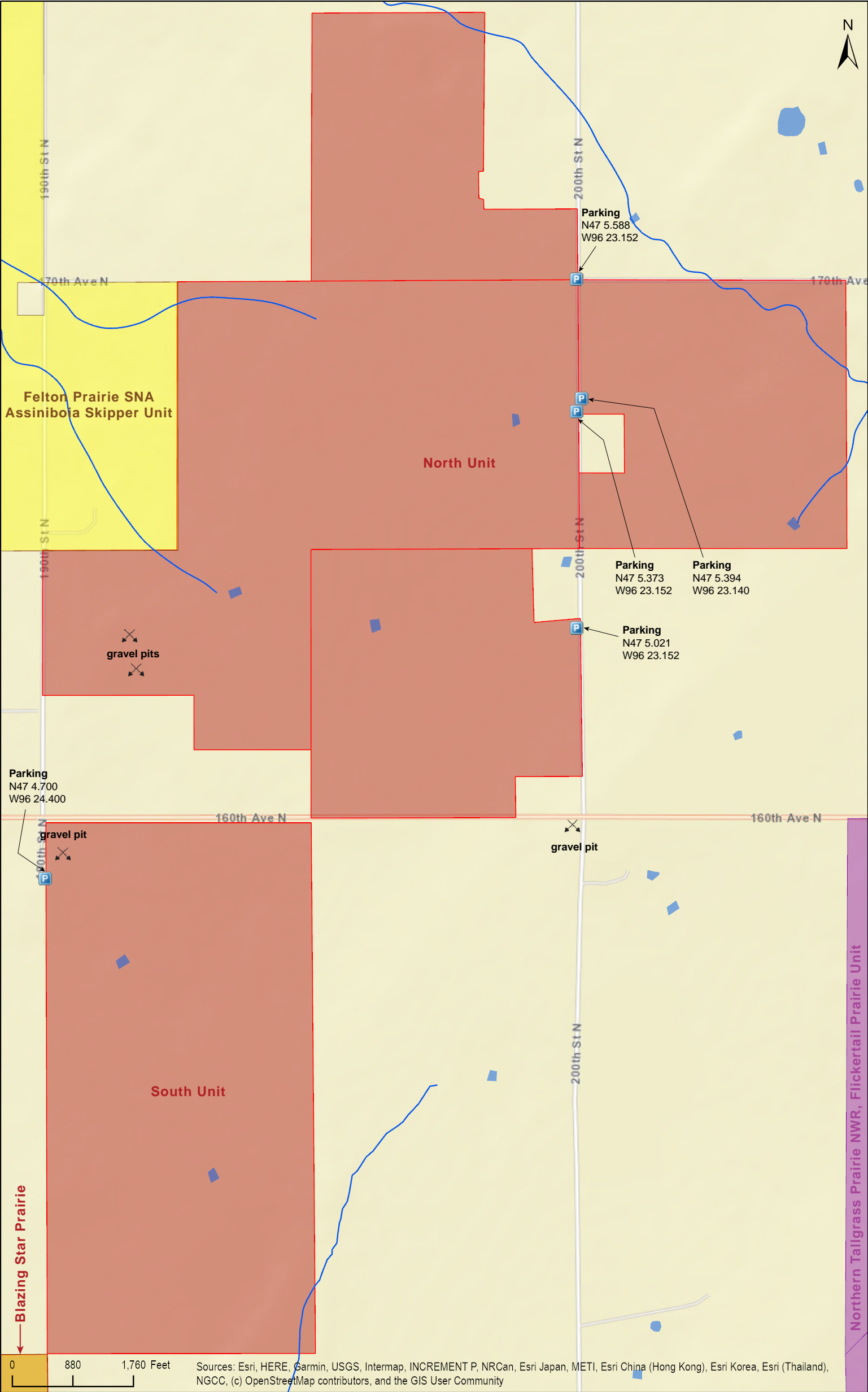
Clay County





Blazing Star Prairie Addition

Clay County



# Blazing Star Prairie Addition

## Directions and Notes from The Nature Conservancy

### Locations:

Portions of SE ¼ of Section 21, Hagen Township, Clay County; 96°23'9"W  
47°5'35"N (47.093148° -96.385865°)

Portions of NW ¼ of Section 27, Hagen Township, Clay County; 96°23'8"W  
47°5'24"N (47.089906° -96.385668°)

NE ¼, E ½ NW ¼, Portions of SW ¼, Portions of SE ¼ of Section 28, Hagen  
Township, Clay County; 96°23'10"W 47°5'22"N (47.089532° -96.385905°)

W ½ of Section 33, Hagen Township, Clay County; 96°24'24"W 47°4'42"N  
(47.078333° -96.406666°)

## Notes from MinnesotaSeasons.com

### Parking

#### South Unit

N47 4.614, W96 24.416

#### North Unit

There are four field accesses/pulloffs on 200th St. N. (County Road 27), three on the west side, one on the east side. Park on a field access.

#### West side of 200th St. N.

N47 5.588, W96 23.152

N47 5.373, W96 23.152

N47 5.021, W96 23.152

#### East side of 200th St. N.

N47 5.394, W96 23.140

## DISCLAIMER OF WARRANTIES AND LIMITATIONS OF LIABILITY

MinnesotaSeasons.com, The Nature Conservancy, U.S. Department of Agriculture, Forest Service, U.S. Fish and Wildlife Service, the state of Minnesota, the Minnesota Department of Natural Resources, and their employees, make no representations or warranties, express or implied, with respect to the use of or reliance on the data provided herewith, regardless of its format or means of transmission. There are no guarantees or representations to the user as to the accuracy, currency, completeness, suitability or reliability of this data for any purpose. THE USER ACCEPTS THE DATA AND/OR SOFTWARE "AS IS" AND ASSUMES ALL RISKS ASSOCIATED WITH ITS USE.

IN NO EVENT SHALL MINNESOTASEASONS.COM, TNC, USDA-FS, USFWS, OR MNDNR BE LIABLE FOR ANY DIRECT, INDIRECT, INCIDENTAL, SPECIAL, EXEMPLARY, OR CONSEQUENTIAL DAMAGES (INCLUDING, BUT NOT LIMITED TO, PROCUREMENT OF SUBSTITUTE GOODS OR SERVICES; LOSS OF USE, DATA, OR PROFITS; OR BUSINESS INTERRUPTION) HOWEVER CAUSED AND ON ANY THEORY OF LIABILITY, WHETHER IN CONTRACT, STRICT LIABILITY, OR TORT (INCLUDING NEGLIGENCE OR OTHERS) ARISING IN ANY WAY OUT OF THE USE OF THIS DATA, EVEN IF ADVISED OF THE POSSIBILITY OF SUCH DAMAGE OR FOR ANY CLAIM BY ANY OTHER PARTY.

Your use of the data is acceptance on your part of the terms and conditions set forth herein.