

Brownsville Bluff SNA

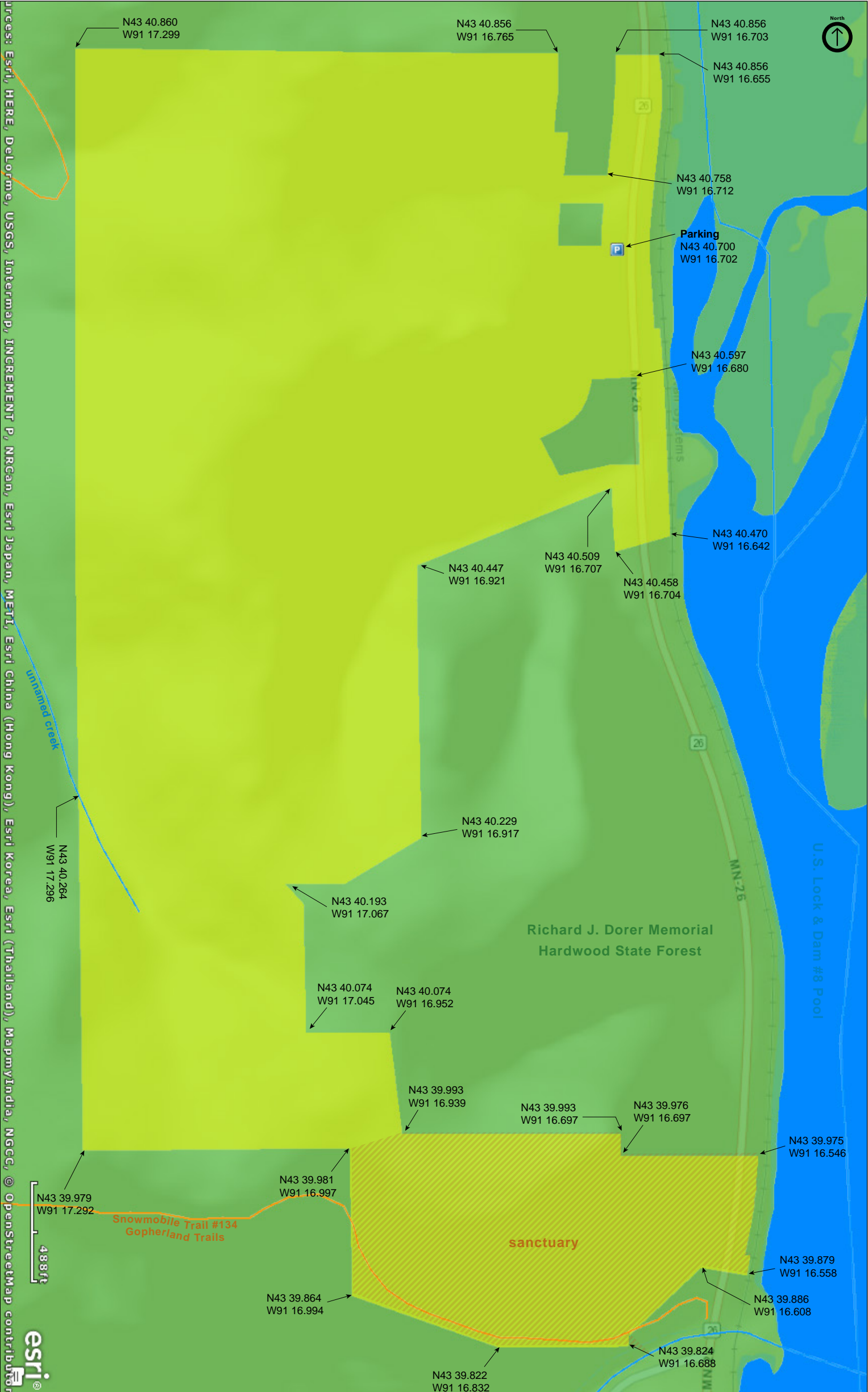
Houston County





Brownsville Bluff SNA

Houston County





Brownsville Bluff SNA

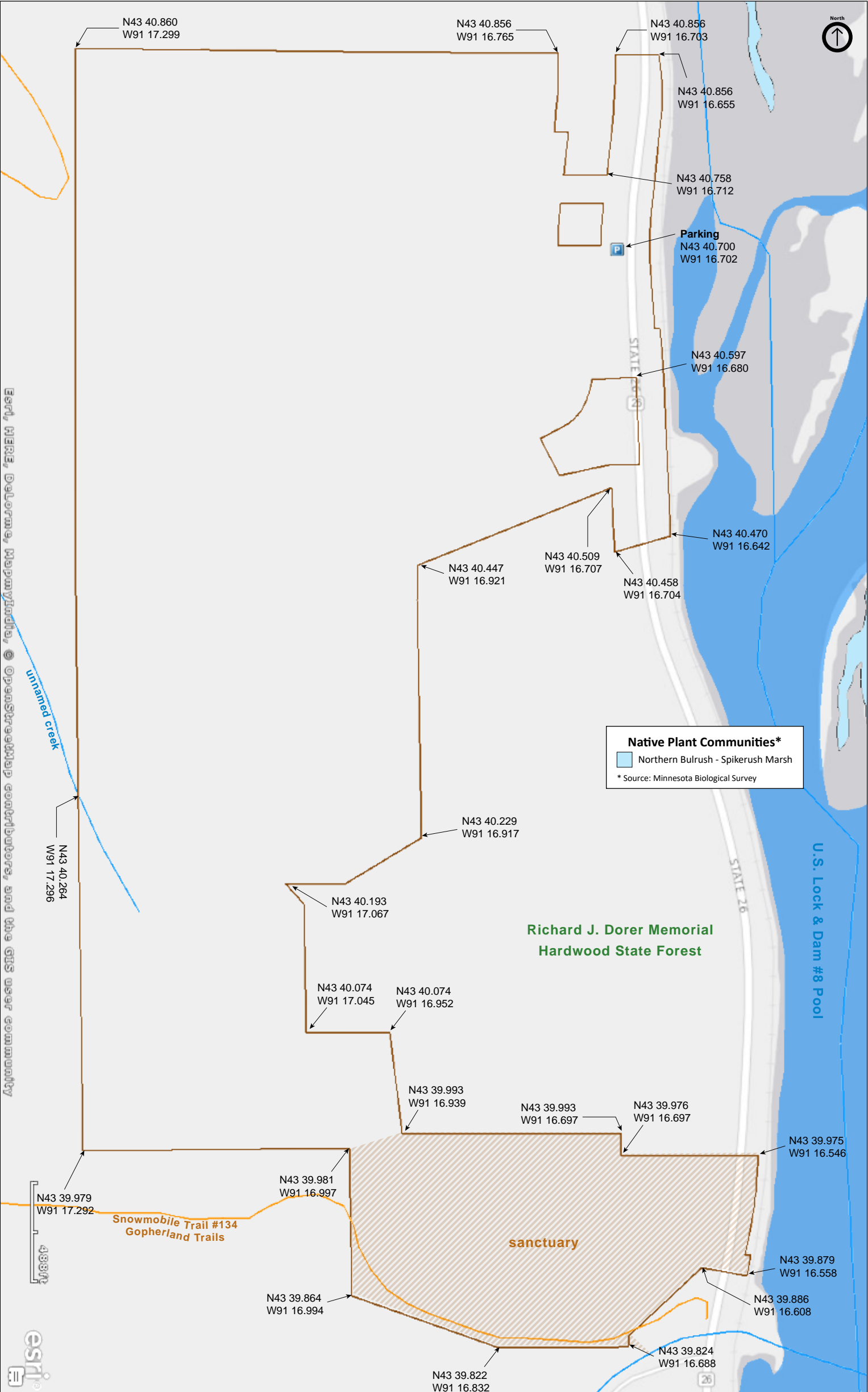
Houston County





Brownsville Bluff SNA

Houston County









# Brownsville Bluff SNA

## **Directions and Notes from Minnesota DNR**

**Directions:** From Brownsville 1.2 miles S on MN 26, then about 100 feet S on access road. Park and hike past gate S and W into site.

**Lat/Lon:** 43.678331, -91.278367

Sanctuary (posted sanctuary portion closed). This site has no maintained trails or other recreational facilities.

## **Notes from MinnesotaSeasons.com**

### **Parking**

N43 40.700, W91 16.702

This SNA lies within the Richard J. Dorer Memorial Hardwood State Forest.

### **Sanctuary**

The 39-acre south section of this SNA is a wildlife sanctuary. It is closed to the public except to those with a research permit.

### **Hiking Trails**

There are no maintained hiking trails. An access road leads from the parking area (walk around the gate) 0.67 miles to the top of the bluff. A footpath follows the cleared fields on the bluff top to the northern boundary. Another footpath leads east from there to an overlook at the northeast corner of the SNA, a dizzying 400 feet above the road below.

## **DISCLAIMER OF WARRANTIES AND LIMITATIONS OF LIABILITY**

MinnesotaSeasons.com, The Nature Conservancy, U.S. Department of Agriculture, Forest Service, U.S. Fish and Wildlife Service, the state of Minnesota, the Minnesota Department of Natural Resources, and their employees, make no representations or warranties, express or implied, with respect to the use of or reliance on the data provided herewith, regardless of its format or means of transmission. There are no guarantees or representations to the user as to the accuracy, currency, completeness, suitability or reliability of this data for any purpose. THE USER ACCEPTS THE DATA AND/OR SOFTWARE "AS IS" AND ASSUMES ALL RISKS ASSOCIATED WITH ITS USE.

IN NO EVENT SHALL MINNESOTASEASONS.COM, TNC, USDA-FS, USFWS, OR MNDNR BE LIABLE FOR ANY DIRECT, INDIRECT, INCIDENTAL, SPECIAL, EXEMPLARY, OR CONSEQUENTIAL DAMAGES (INCLUDING, BUT NOT LIMITED TO, PROCUREMENT OF SUBSTITUTE GOODS OR SERVICES; LOSS OF USE, DATA, OR PROFITS; OR BUSINESS INTERRUPTION) HOWEVER CAUSED AND ON ANY THEORY OF LIABILITY, WHETHER IN CONTRACT, STRICT LIABILITY, OR TORT (INCLUDING NEGLIGENCE OR OTHERS) ARISING IN ANY WAY OUT OF THE USE OF THIS DATA, EVEN IF ADVISED OF THE POSSIBILITY OF SUCH DAMAGE OR FOR ANY CLAIM BY ANY OTHER PARTY.

Your use of the data is acceptance on your part of the terms and conditions set forth herein.