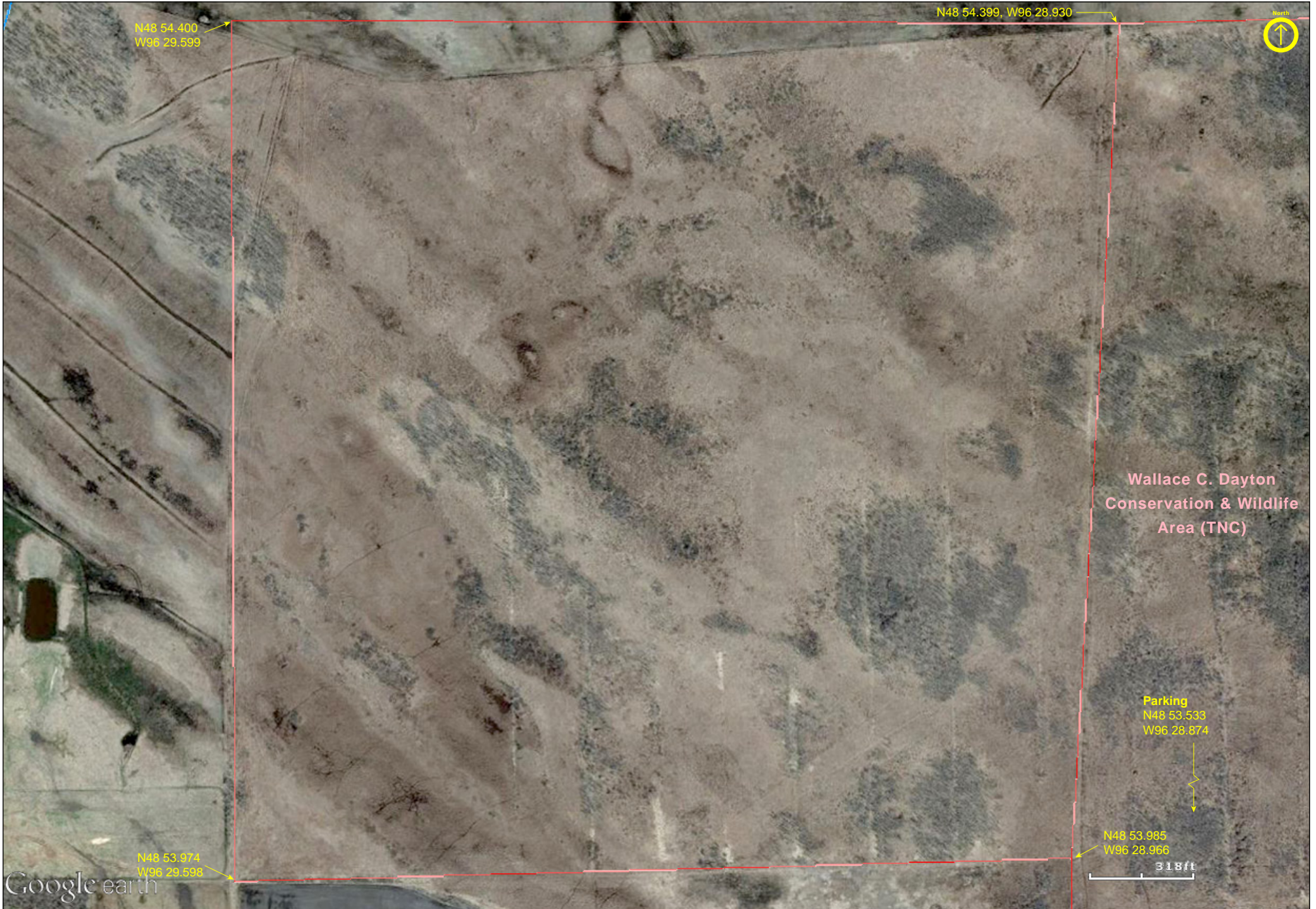


Caribou Woodland

Kittson County



Caribou Woodland

Kittson County



Caribou Woodland

Kittson County



Copyright: © 2013 National Geographic Society, i-cubed



Caribou Woodland

Kittson County



Caribou Woodland

Directions and Notes from The Nature Conservancy

Location: NW 1/4 of Section 33, Caribou Township, Kittson County; 96°29'16"W
48°54'11"N (48.9030556°, -096.4877778°)

No parking data is provided by The Nature Conservancy.

Notes from MinnesotaSeasons.com

Parking

N48 53.533, W96 28.874

No parking or “best access” data is provided by The Nature Conservancy. Caribou Woodland is surrounded on three sides by private land and on the east by a unit of the Wallace C. Dayton Conservation & Wildlife Area (TNC). There appears to be a field access on 340th St. on that unit ½ mile south of the southeast corner of Caribou Woodland at the coordinates above.

DISCLAIMER OF WARRANTIES AND LIMITATIONS OF LIABILITY

MinnesotaSeasons.com, The Nature Conservancy, U.S. Department of Agriculture, Forest Service, U.S. Fish and Wildlife Service, the state of Minnesota, the Minnesota Department of Natural Resources, and their employees, make no representations or warranties, express or implied, with respect to the use of or reliance on the data provided herewith, regardless of its format or means of transmission. There are no guarantees or representations to the user as to the accuracy, currency, completeness, suitability or reliability of this data for any purpose. THE USER ACCEPTS THE DATA AND/OR SOFTWARE "AS IS" AND ASSUMES ALL RISKS ASSOCIATED WITH ITS USE.

IN NO EVENT SHALL MINNESOTASEASONS.COM, TNC, USDA-FS, USFWS, OR MNDNR BE LIABLE FOR ANY DIRECT, INDIRECT, INCIDENTAL, SPECIAL, EXEMPLARY, OR CONSEQUENTIAL DAMAGES (INCLUDING, BUT NOT LIMITED TO, PROCUREMENT OF SUBSTITUTE GOODS OR SERVICES; LOSS OF USE, DATA, OR PROFITS; OR BUSINESS INTERRUPTION) HOWEVER CAUSED AND ON ANY THEORY OF LIABILITY, WHETHER IN CONTRACT, STRICT LIABILITY, OR TORT (INCLUDING NEGLIGENCE OR OTHERS) ARISING IN ANY WAY OUT OF THE USE OF THIS DATA, EVEN IF ADVISED OF THE POSSIBILITY OF SUCH DAMAGE OR FOR ANY CLAIM BY ANY OTHER PARTY.

Your use of the data is acceptance on your part of the terms and conditions set forth herein.