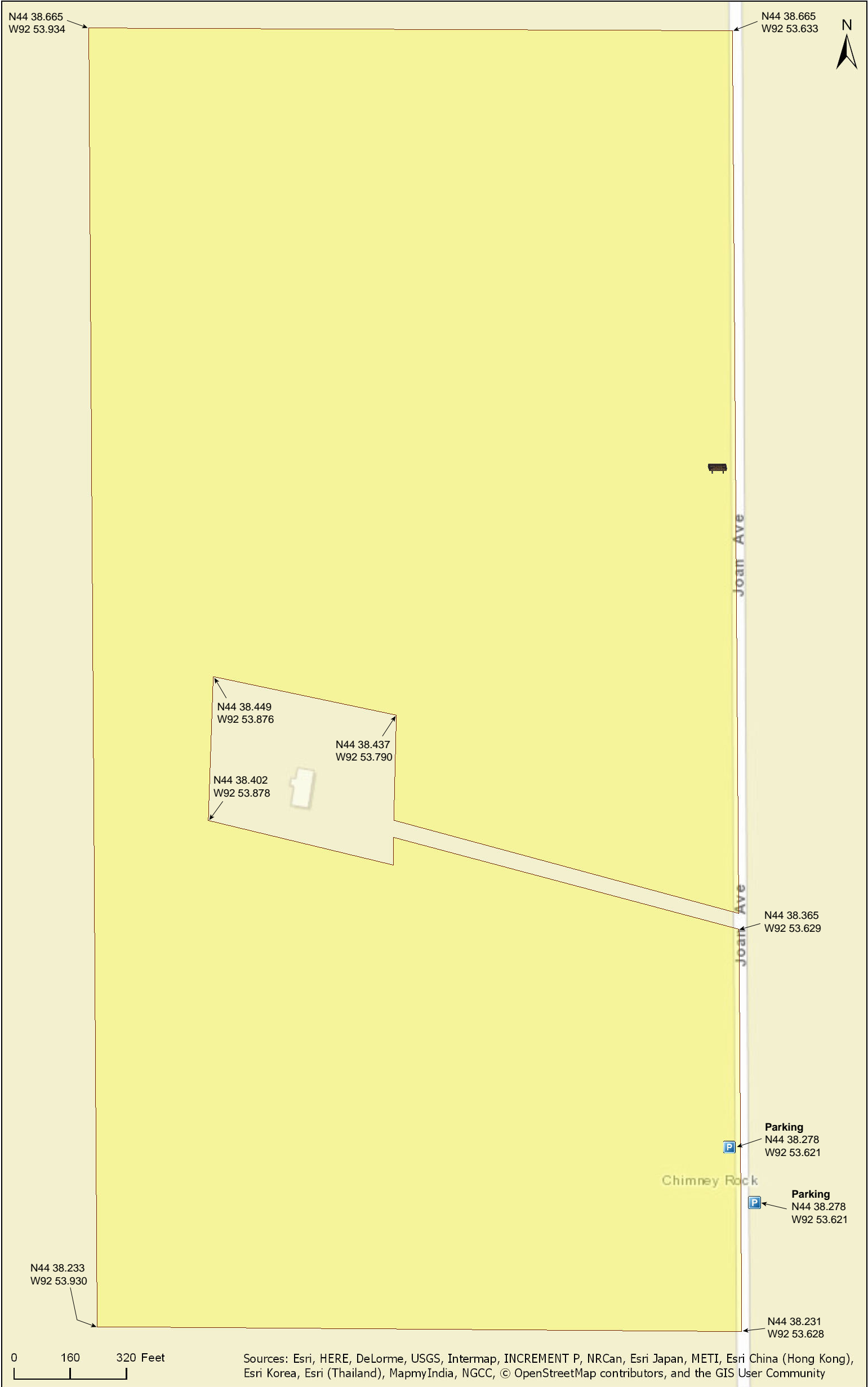


Chimney Rock SNA

Dakota County





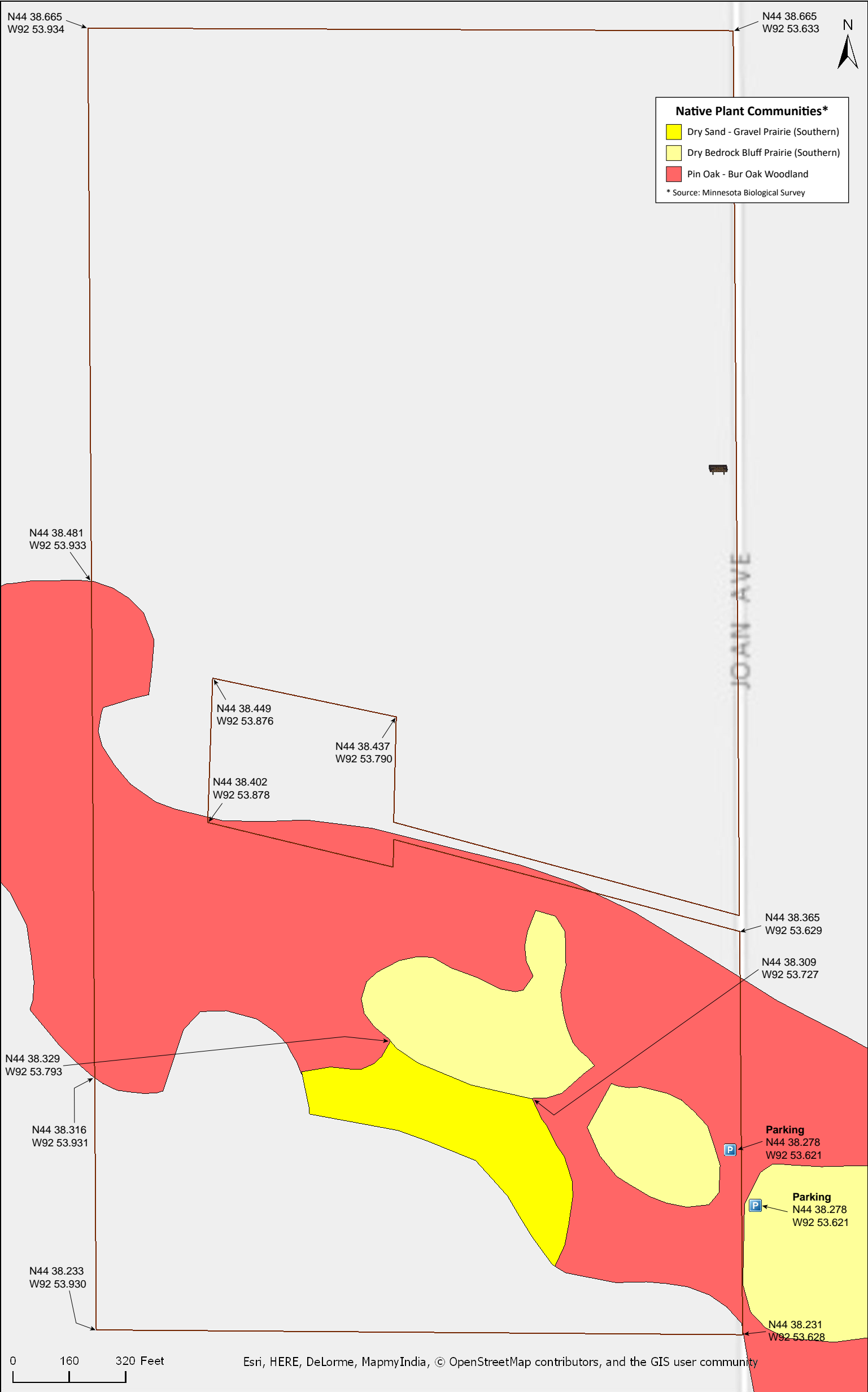
Chimney Rock SNA

Dakota County



Chimney Rock SNA

Dakota County





Chimney Rock SNA

Directions and Notes from Minnesota DNR

Directions: From Hastings 4 miles S on US Hwy 61, then 2 miles W on Co Rd 77 (205th St E). Continue 1 mile S on Co Hwy 89 (Joan Ave). Park on W road shoulder.

Lat/Lon: 44.638174, -92.893909

This site has no maintained trails or other recreational facilities. As shown on the map, a private home and driveway are surrounded by the SNA. Please respect this private property and stay on the SNA when visiting.

Notes from MinnesotaSeasons.com

Parking

N44 38.278, W92 53.621

There is no designated parking area. The Minnesota DNR Web page for this site suggests parking on the west shoulder of the road. However, there is a widening of the shoulder, effectively a parking area, on the east side of the road.

Usage

A short, well-worn footpath, littered with empty beer cans and cigarette butts, leads from the road near the parking area, around the chimney rock, to a large rock outcropping. Numerous carvings in the soft rock suggest that this is a locally favorite “make out” site.

DISCLAIMER OF WARRANTIES AND LIMITATIONS OF LIABILITY

MinnesotaSeasons.com, The Nature Conservancy, U.S. Department of Agriculture, Forest Service, U.S. Fish and Wildlife Service, the state of Minnesota, the Minnesota Department of Natural Resources, and their employees, make no representations or warranties, express or implied, with respect to the use of or reliance on the data provided herewith, regardless of its format or means of transmission. There are no guarantees or representations to the user as to the accuracy, currency, completeness, suitability or reliability of this data for any purpose. THE USER ACCEPTS THE DATA AND/OR SOFTWARE "AS IS" AND ASSUMES ALL RISKS ASSOCIATED WITH ITS USE.

IN NO EVENT SHALL MINNESOTASEASONS.COM, TNC, USDA-FS, USFWS, OR MNDNR BE LIABLE FOR ANY DIRECT, INDIRECT, INCIDENTAL, SPECIAL, EXEMPLARY, OR CONSEQUENTIAL DAMAGES (INCLUDING, BUT NOT LIMITED TO, PROCUREMENT OF SUBSTITUTE GOODS OR SERVICES; LOSS OF USE, DATA, OR PROFITS; OR BUSINESS INTERRUPTION) HOWEVER CAUSED AND ON ANY THEORY OF LIABILITY, WHETHER IN CONTRACT, STRICT LIABILITY, OR TORT (INCLUDING NEGLIGENCE OR OTHERS) ARISING IN ANY WAY OUT OF THE USE OF THIS DATA, EVEN IF ADVISED OF THE POSSIBILITY OF SUCH DAMAGE OR FOR ANY CLAIM BY ANY OTHER PARTY.

Your use of the data is acceptance on your part of the terms and conditions set forth herein.