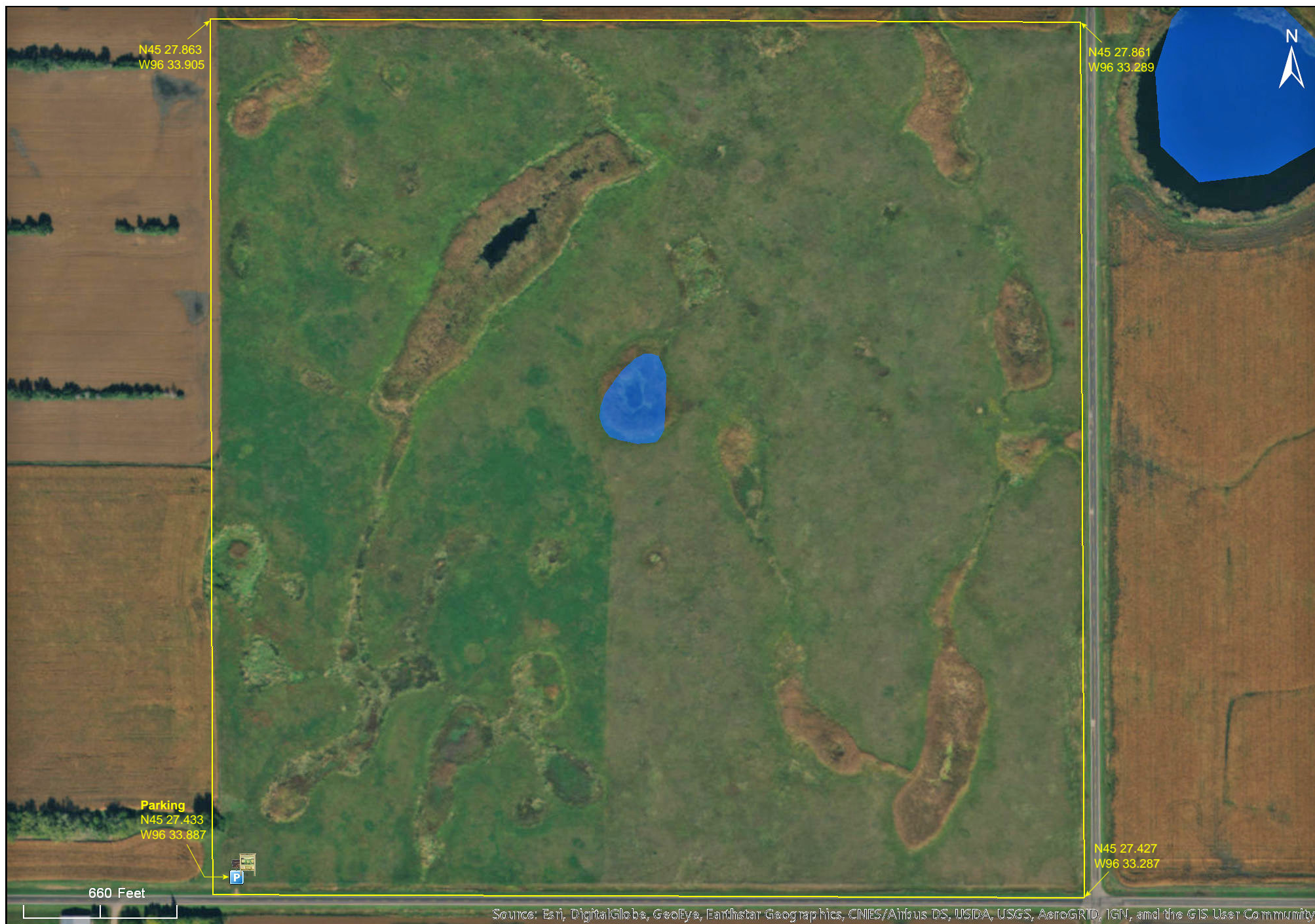


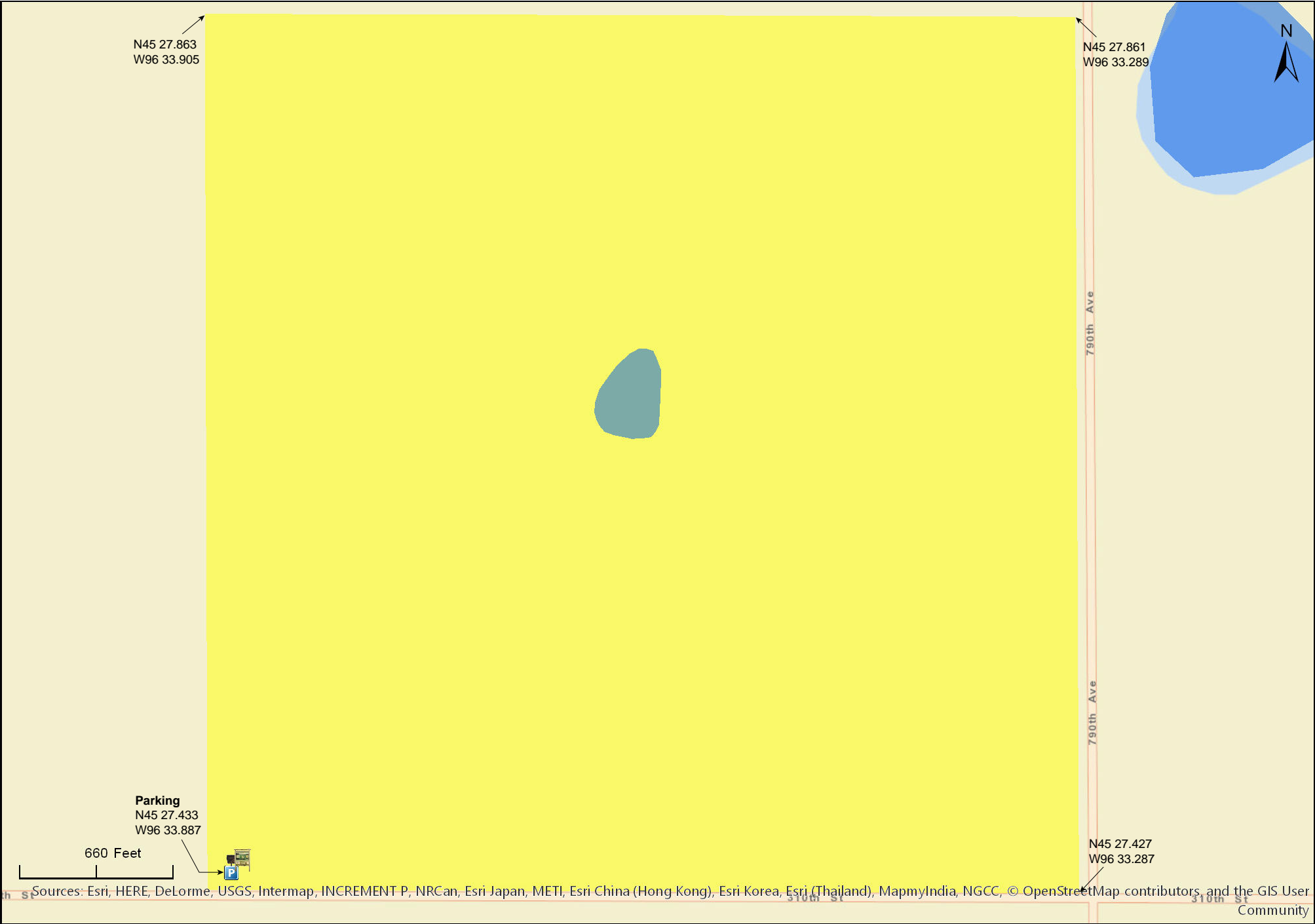
Clinton Prairie SNA

Big Stone County



Clinton Prairie SNA

Big Stone County



Clinton Prairie SNA

Big Stone County



Copyright © 2013 National Geographic Society, i-cubed

Clinton Prairie SNA

Big Stone County

N45 27.863
W96 33.905

N45 27.861
W96 33.289



Native Plant Communities*

- Mesic Prairie (Southern)
- Wet Prairie (Southern)

* Source: Minnesota Biological Survey

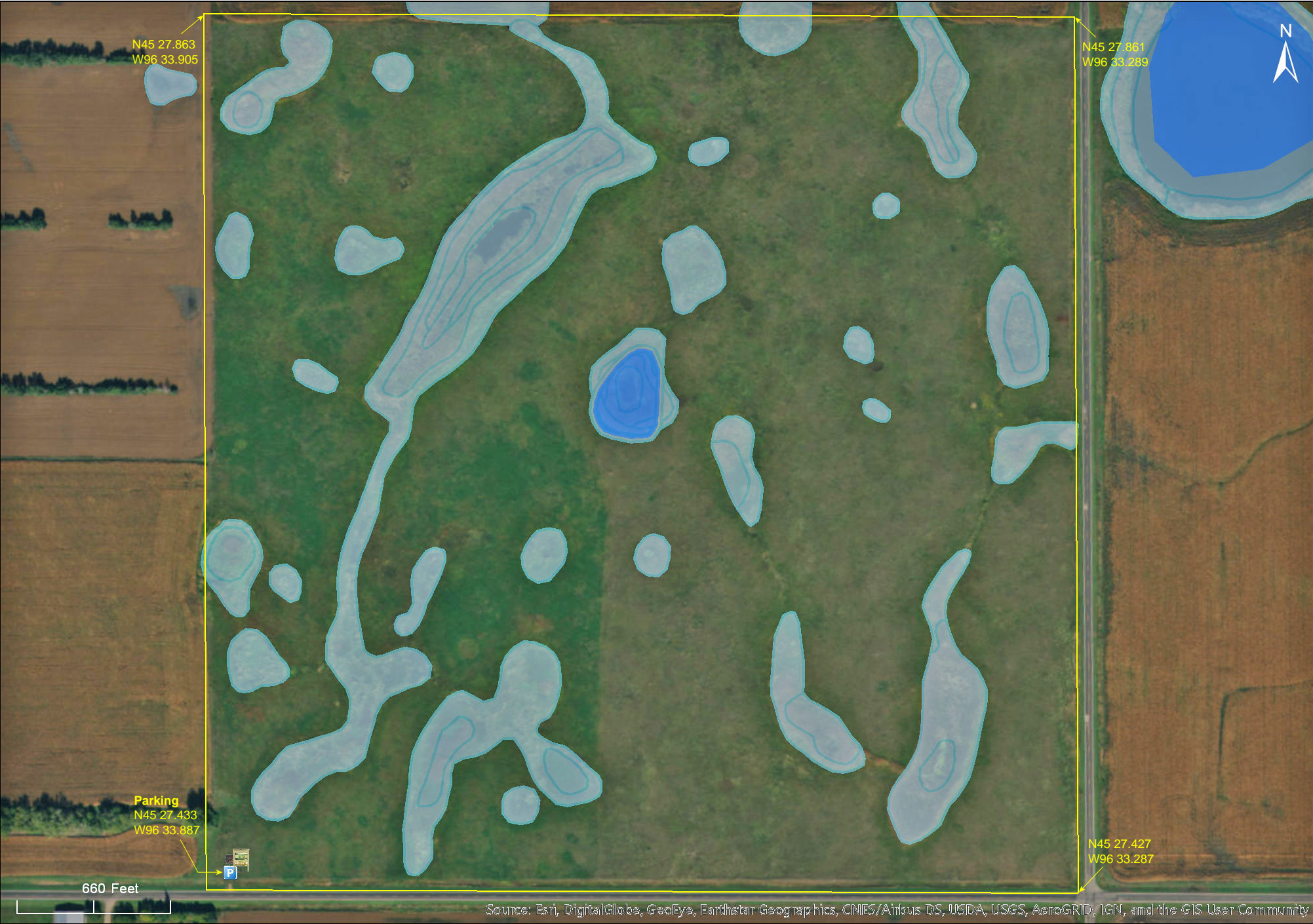
Parking
N45 27.433
W96 33.887

N45 27.427
W96 33.287

660 Feet

310TH ST

Esri, HERE, DeLorme, MapmyIndia, © OpenStreetMap contributors, and the GIS user community



Source: Esri, DigitalGlobe, GeoEye, Earthstar Geographics, CNES/Airbus DS, USDA, USGS, AeroGRID, IGN, and the GIS User Community

Clinton Prairie SNA

Notes from Minnesota DNR

Directions: From Clinton 6 miles W on Co Hwy 6. Park in pull-off on N, near wood-routed sign.

Lat/Lon: 45.457218, -96.564775

This site has no maintained trails or other recreational facilities. This site is in an Audubon Important Bird Area.

Biodiversity here has benefited from work by volunteer site stewards to keep invasive birdsfoot trefoil in check, a non-native that would otherwise tend to form large, vegetative mats at the expense of native species.

Notes from MinnesotaSeasons.com

Parking

N45 27.433, W96 33.887

DISCLAIMER OF WARRANTIES AND LIMITATIONS OF LIABILITY

MinnesotaSeasons.com, The Nature Conservancy, U.S. Department of Agriculture, Forest Service, U.S. Fish and Wildlife Service, the state of Minnesota, the Minnesota Department of Natural Resources, and their employees, make no representations or warranties, express or implied, with respect to the use of or reliance on the data provided herewith, regardless of its format or means of transmission. There are no guarantees or representations to the user as to the accuracy, currency, completeness, suitability or reliability of this data for any purpose. THE USER ACCEPTS THE DATA AND/OR SOFTWARE "AS IS" AND ASSUMES ALL RISKS ASSOCIATED WITH ITS USE.

IN NO EVENT SHALL MINNESOTASEASONS.COM, TNC, USDA-FS, USFWS, OR MNDNR BE LIABLE FOR ANY DIRECT, INDIRECT, INCIDENTAL, SPECIAL, EXEMPLARY, OR CONSEQUENTIAL DAMAGES (INCLUDING, BUT NOT LIMITED TO, PROCUREMENT OF SUBSTITUTE GOODS OR SERVICES; LOSS OF USE, DATA, OR PROFITS; OR BUSINESS INTERRUPTION) HOWEVER CAUSED AND ON ANY THEORY OF LIABILITY, WHETHER IN CONTRACT, STRICT LIABILITY, OR TORT (INCLUDING NEGLIGENCE OR OTHERS) ARISING IN ANY WAY OUT OF THE USE OF THIS DATA, EVEN IF ADVISED OF THE POSSIBILITY OF SUCH DAMAGE OR FOR ANY CLAIM BY ANY OTHER PARTY.

Your use of the data is acceptance on your part of the terms and conditions set forth herein.