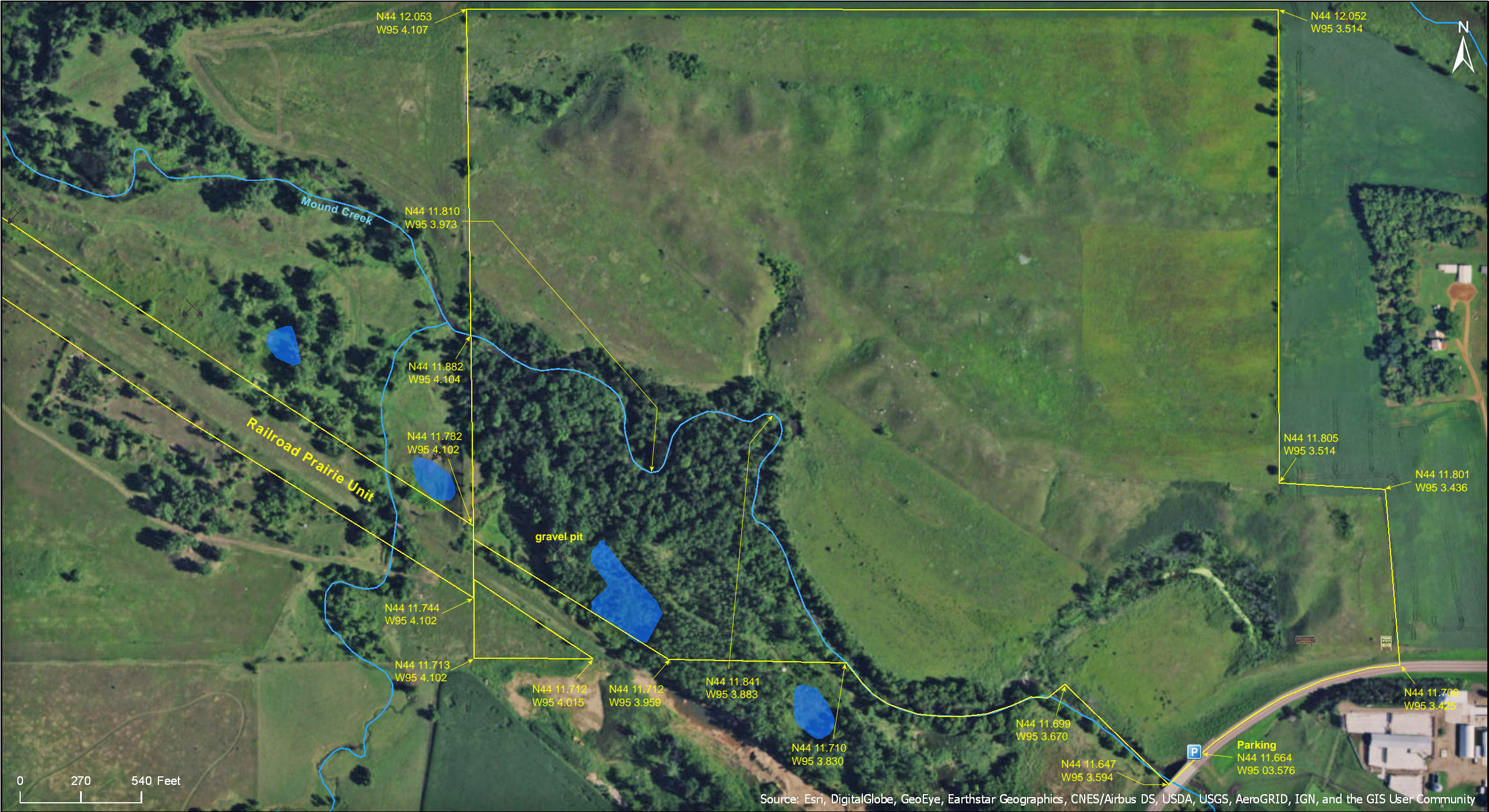


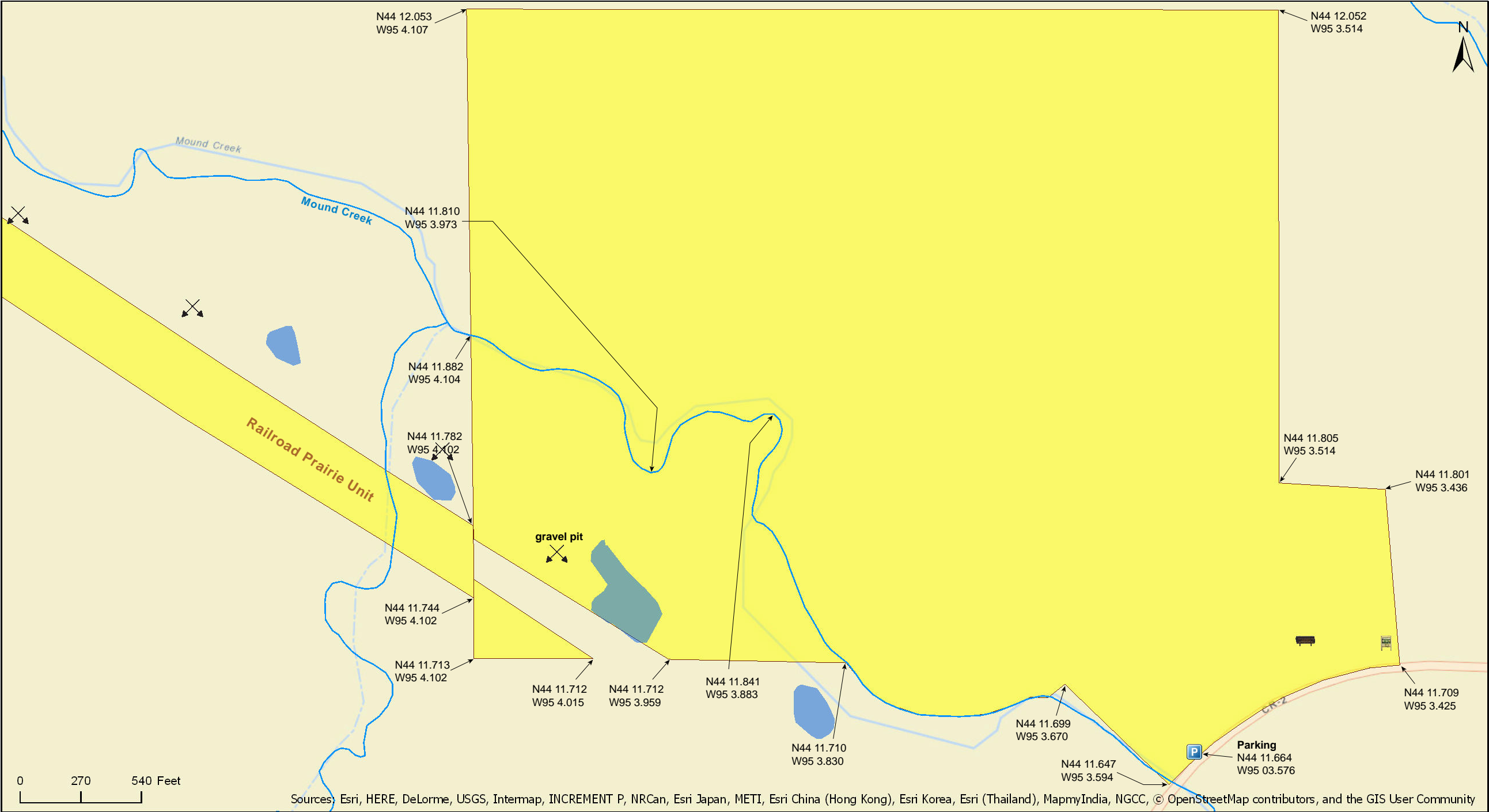
Cottonwood River Prairie SNA
Prairie Sky Unit

Brown County



Cottonwood River Prairie SNA
Prairie Sky Unit

Brown County



Sources: Esri, HERE, DeLorme, USGS, Intermap, INCREMENT P, NRCan, Esri Japan, METI, Esri China (Hong Kong), Esri Korea, Esri (Thailand), MapmyIndia, NGCC, © OpenStreetMap contributors, and the GIS User Community

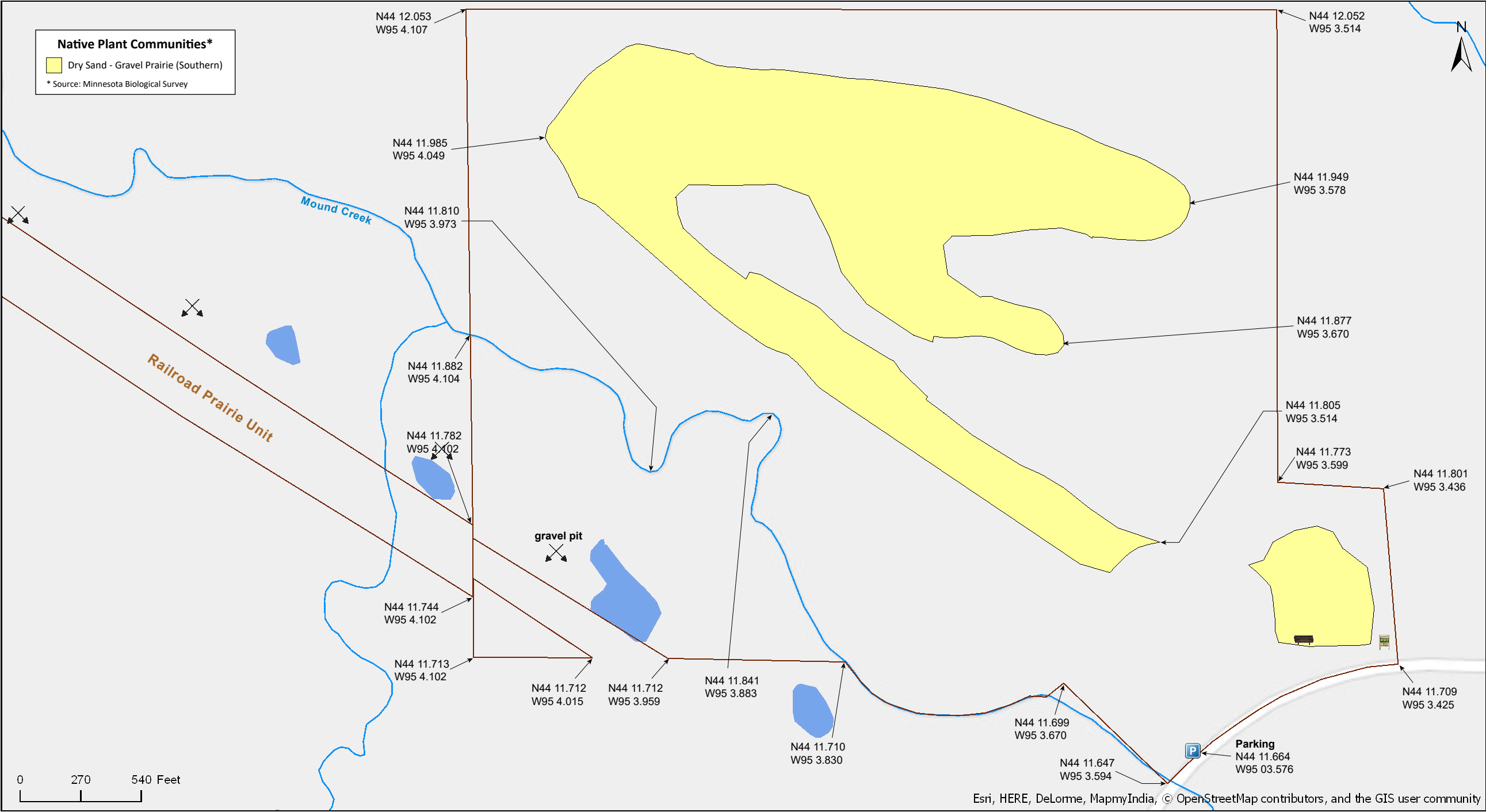
Cottonwood River Prairie SNA
Prairie Sky Unit

Brown County



Cottonwood River Prairie SNA
Prairie Sky Unit

Brown County



Cottonwood River Prairie SNA
Prairie Sky Unit

National Wetlands Inventory

Brown County



Cottonwood River Prairie SNA
Prairie Sky Unit

Directions and Notes from Minnesota DNR

Directions: From Springfield 3 miles W on US Hwy 14, then 3 miles S on Co Hwy 2. Turn W (staying on 2) and after 0.5 mile park on W, before bridge.

Lat/Lon: 44.194395, -95.059592

This site has no maintained trails or other recreational facilities.

Notes from MinnesotaSeasons.com

Parking

N44 11.664, W95 03.576

DISCLAIMER OF WARRANTIES AND LIMITATIONS OF LIABILITY

MinnesotaSeasons.com, The Nature Conservancy, U.S. Department of Agriculture, Forest Service, U.S. Fish and Wildlife Service, the state of Minnesota, the Minnesota Department of Natural Resources, and their employees, make no representations or warranties, express or implied, with respect to the use of or reliance on the data provided herewith, regardless of its format or means of transmission. There are no guarantees or representations to the user as to the accuracy, currency, completeness, suitability or reliability of this data for any purpose. THE USER ACCEPTS THE DATA AND/OR SOFTWARE "AS IS" AND ASSUMES ALL RISKS ASSOCIATED WITH ITS USE.

IN NO EVENT SHALL MINNESOTASEASONS.COM, TNC, USDA-FS, USFWS, OR MNDNR BE LIABLE FOR ANY DIRECT, INDIRECT, INCIDENTAL, SPECIAL, EXEMPLARY, OR CONSEQUENTIAL DAMAGES (INCLUDING, BUT NOT LIMITED TO, PROCUREMENT OF SUBSTITUTE GOODS OR SERVICES; LOSS OF USE, DATA, OR PROFITS; OR BUSINESS INTERRUPTION) HOWEVER CAUSED AND ON ANY THEORY OF LIABILITY, WHETHER IN CONTRACT, STRICT LIABILITY, OR TORT (INCLUDING NEGLIGENCE OR OTHERS) ARISING IN ANY WAY OUT OF THE USE OF THIS DATA, EVEN IF ADVISED OF THE POSSIBILITY OF SUCH DAMAGE OR FOR ANY CLAIM BY ANY OTHER PARTY.

Your use of the data is acceptance on your part of the terms and conditions set forth herein.