

Cottonwood River Prairie SNA  
Railroad Prairie

Brown County

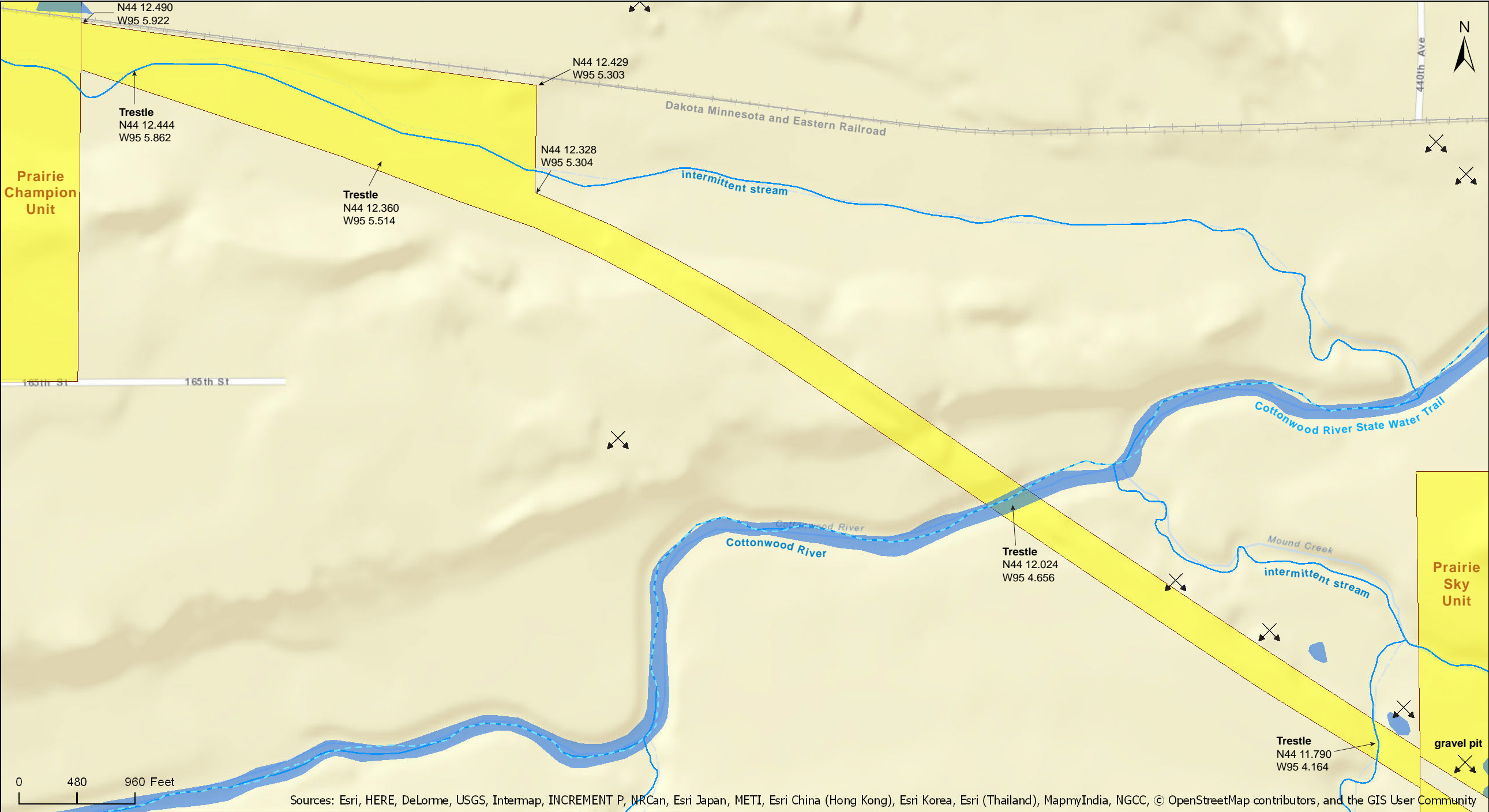


Source: Esri, DigitalGlobe, GeoEye, Earthstar Geographics, CNES/Airbus DS, USDA, USGS, AeroGRID, IGN, and the GIS User Community



Cottonwood River Prairie SNA  
Railroad Prairie

Brown County





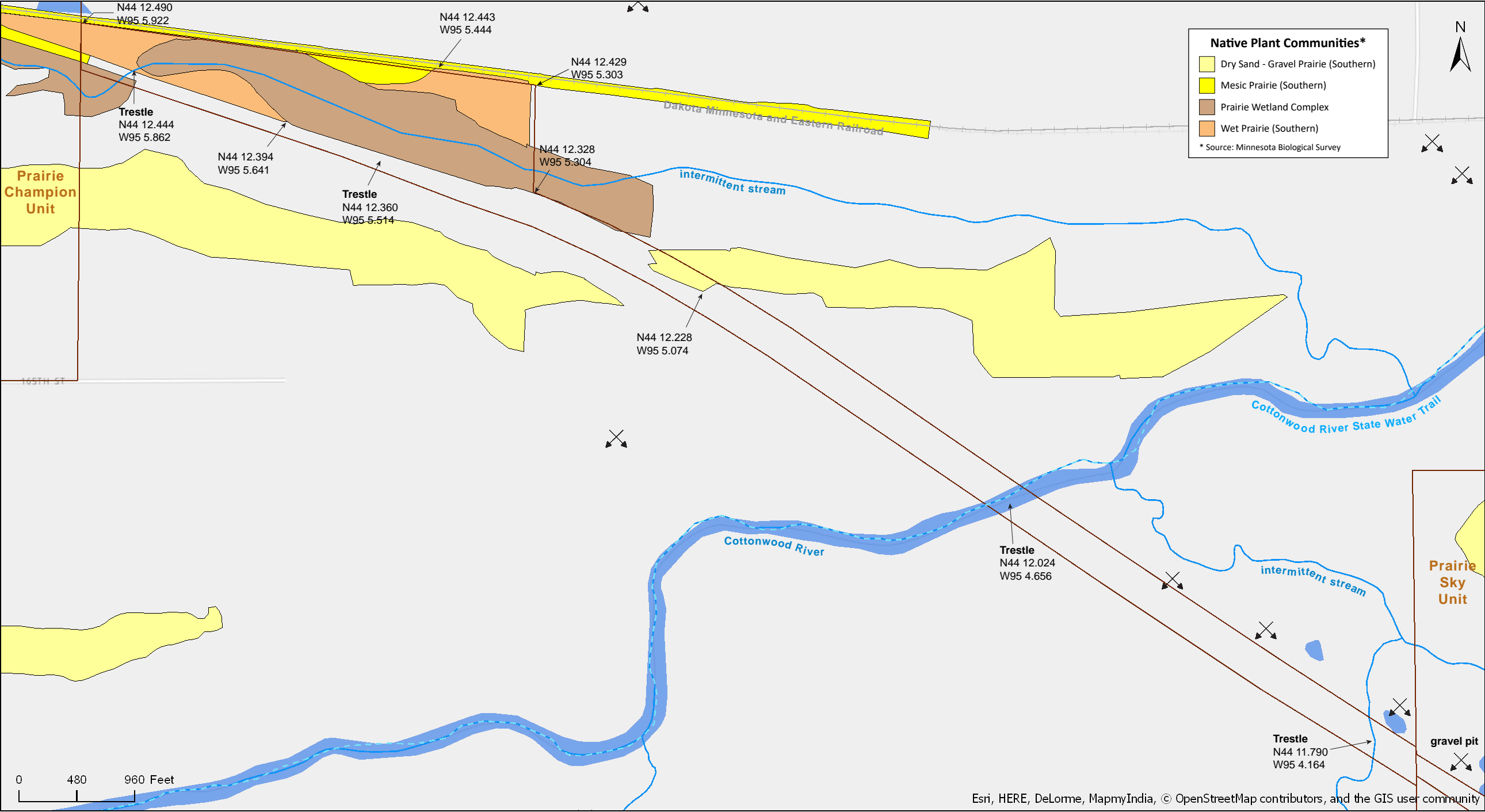
Cottonwood River Prairie SNA  
Railroad Prairie

Brown County



Cottonwood River Prairie SNA  
Railroad Prairie

Brown County





Cottonwood River Prairie SNA  
Railroad Prairie

National Wetlands Inventory

Brown County





# Cottonwood River Prairie SNA

## Railroad Prairie

### Directions and Notes from Minnesota DNR

#### **Prairie Champion Unit**

**Directions:** From Sanborn 0.65 mile E of US Hwy 71 on 110th St, then 0.5 mile S on 460th, then 0.25 mile E on 165th St. Park in pull-off on N.

**Lat/Lon:** 44.202345, -95.102855

#### **Prairie Sky Unit**

**Directions:** From Springfield 3 miles W on US Hwy 14, then 3 miles S on Co Hwy 2. Turn W (staying on 2) and after 0.5 mile park on W, before bridge.

**Lat/Lon:** 44.194395, -95.059592

This site has no maintained trails or other recreational facilities.

### Notes from MinnesotaSeasons.com

#### **Parking**

Prairie Champion Unit  
N44 12.141, W95 06.171

Prairie Sky Unit, Railroad Prairie  
N44 11.664, W95 03.576

### DISCLAIMER OF WARRANTIES AND LIMITATIONS OF LIABILITY

MinnesotaSeasons.com, The Nature Conservancy, U.S. Department of Agriculture, Forest Service, U.S. Fish and Wildlife Service, the state of Minnesota, the Minnesota Department of Natural Resources, and their employees, make no representations or warranties, express or implied, with respect to the use of or reliance on the data provided herewith, regardless of its format or means of transmission. There are no guarantees or representations to the user as to the accuracy, currency, completeness, suitability or reliability of this data for any purpose. THE USER ACCEPTS THE DATA AND/OR SOFTWARE "AS IS" AND ASSUMES ALL RISKS ASSOCIATED WITH ITS USE.

IN NO EVENT SHALL MINNESOTASEASONS.COM, TNC, USDA-FS, USFWS, OR MNDNR BE LIABLE FOR ANY DIRECT, INDIRECT, INCIDENTAL, SPECIAL, EXEMPLARY, OR CONSEQUENTIAL DAMAGES (INCLUDING, BUT NOT LIMITED TO, PROCUREMENT OF SUBSTITUTE GOODS OR SERVICES; LOSS OF USE, DATA, OR PROFITS; OR BUSINESS INTERRUPTION) HOWEVER CAUSED AND ON ANY THEORY OF LIABILITY, WHETHER IN CONTRACT, STRICT LIABILITY, OR TORT (INCLUDING NEGLIGENCE OR OTHERS) ARISING IN ANY WAY OUT OF THE USE OF THIS DATA, EVEN IF ADVISED OF THE POSSIBILITY OF SUCH DAMAGE OR FOR ANY CLAIM BY ANY OTHER PARTY.

Your use of the data is acceptance on your part of the terms and conditions set forth herein.