

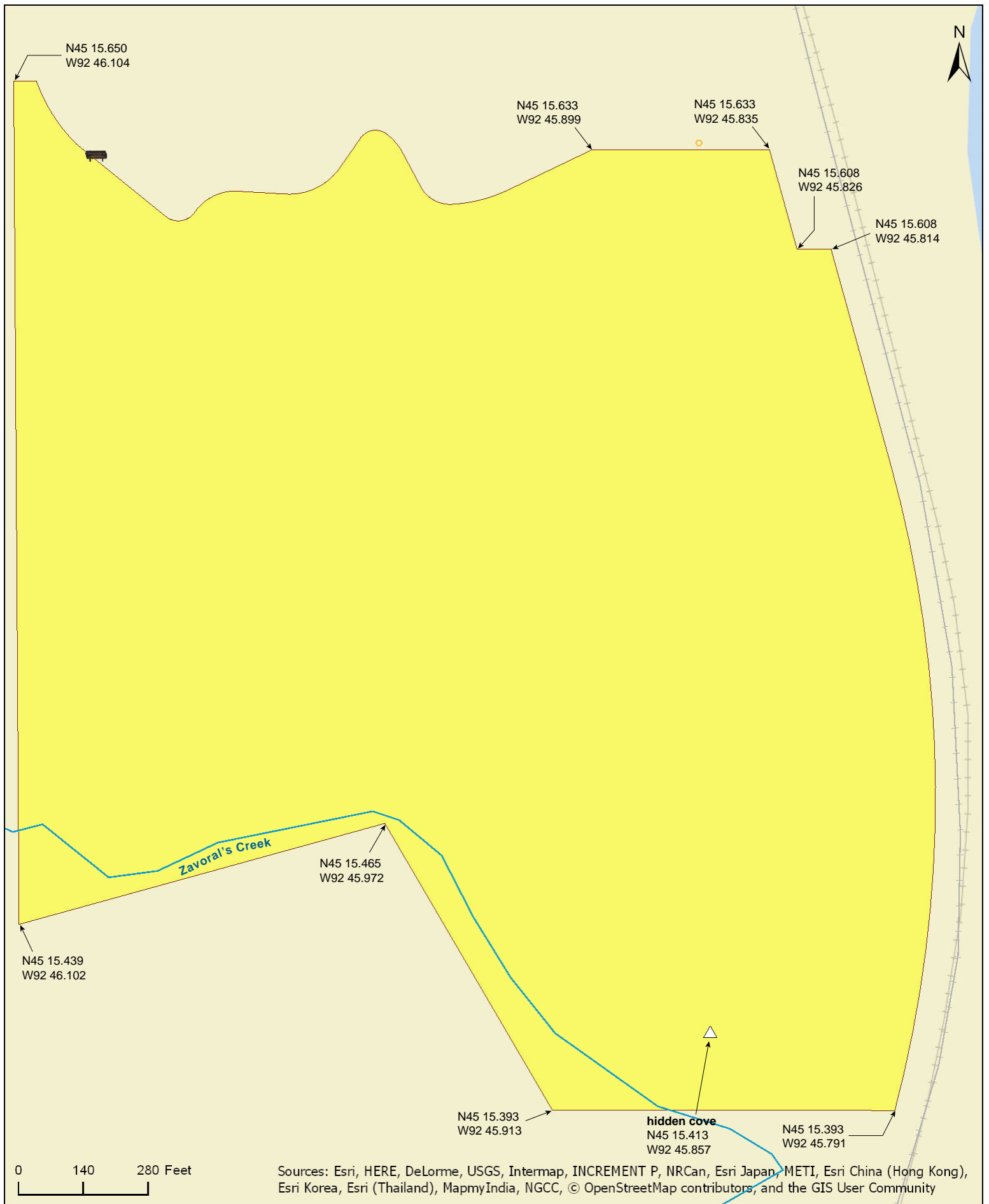
Crystal Spring SNA

Washington County



Crystal Spring SNA

Washington County



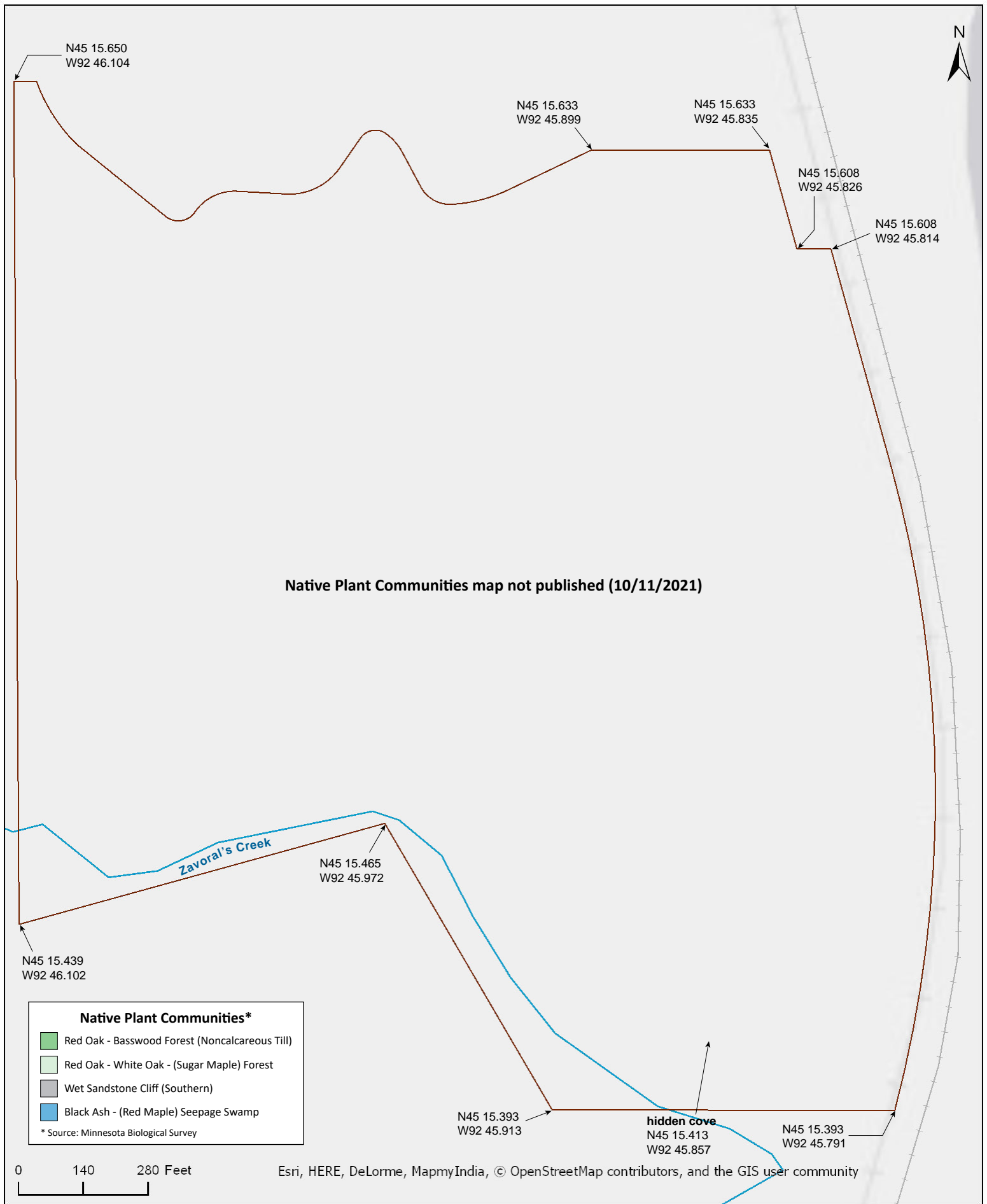
Crystal Spring SNA

Washington County



Crystal Spring SNA

Washington County



NO WETLANDS

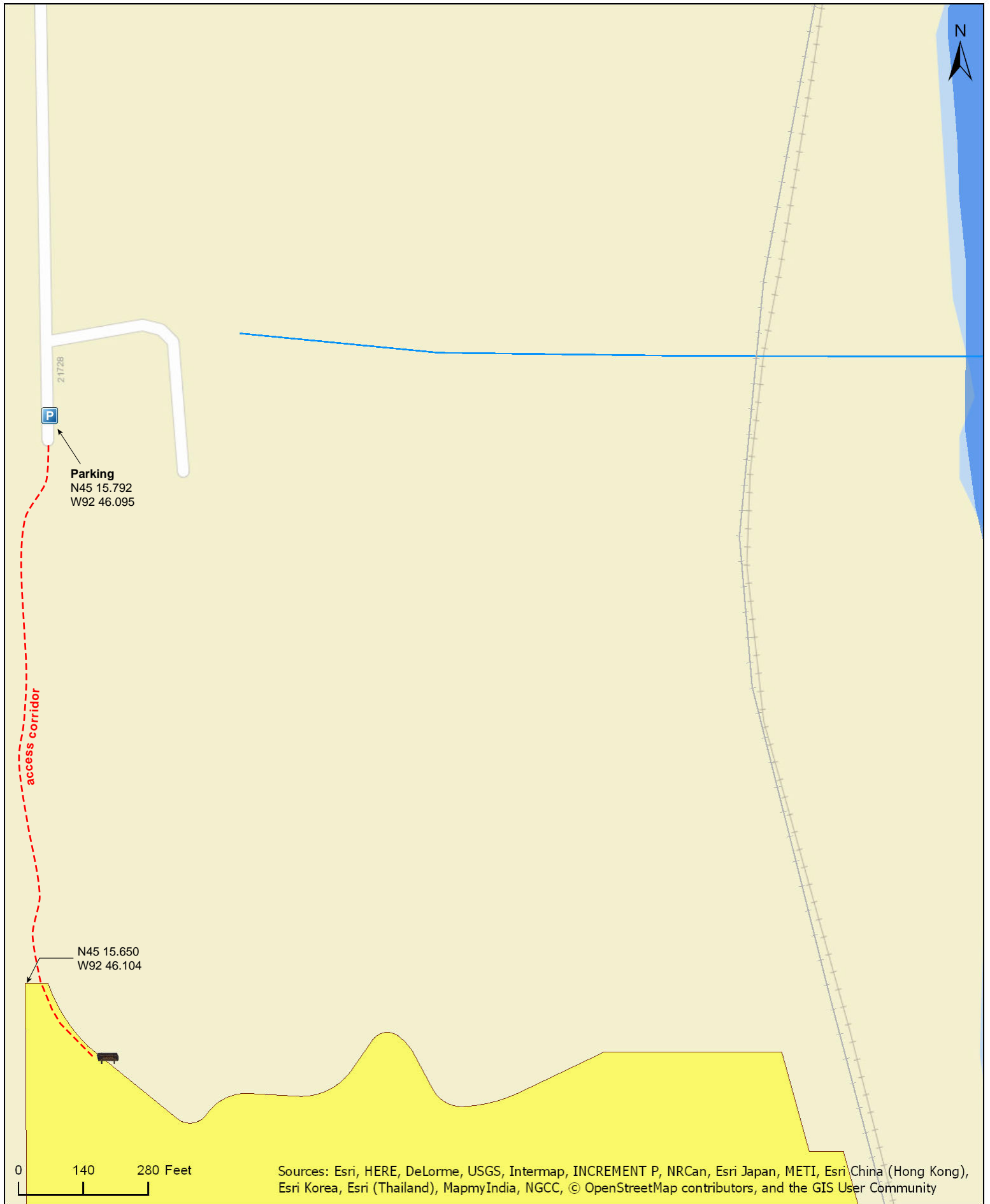
Crystal Spring SNA Approach

Washington County



Crystal Spring SNA Approach

Washington County



Crystal Spring SNA

Directions and Notes from Minnesota DNR

Directions: From Scandia 1.6 miles E on MN 97 (Scandia Trail), then 0.8 mile N on MN 95 (St Croix Trail, then 0.3 mile E on 220th St, then 0.3 mile S on Quarry Ave. Park only on E road shoulder. Hike 0.15 mile S along marked corridor to site.

Lat/Lon: 45.263196, -92.768251

This site has no maintained trails or other recreational facilities. The steep cliffs and rugged terrain here present a safety hazard to visitors. The plant communities on cliffs are also sensitive to disturbance. Stay back from cliffs and off steep slopes noted on the detail map. This site is in an Audubon Important Bird Area.

The site is within the Lower St. Croix National Scenic Riverway. Groups seeking to visit or plan activities here should contact Laura Hojem (laura_hojem@nps.gov or 715-483-3288) beforehand.

Notes from MinnesotaSeasons.com

Parking

N45 15.792, W92 46.095

Hiking Trails

A hiking corridor leads from the parking area to the SNA. An old forest road leads from the SNA sign to a clearing in the forest. From there, a hiking trail leads past a hidden cove to the south boundary of the SNA. Visitors are asked to stay back from the cliffs and off the steep slopes.

Hidden Cove

The hiking trail eventually passes a set of winding steps that leads down a bluff and out of sight. The steps end at a sandstone cliff about 25 feet above a stream. A narrow trail at the base of the cliff but only halfway down the steep bluff leads to a hidden cove. The north wall of the cove is dry cliff exposing two bedrock layers, Jordan Sandstone and Saint Lawrence Shale. A spring at end of the cove bubbles into a "crystal" clear pool which overflows down the cliff to Zavoral's Creek below.

Zavoral's Creek

Zavoral's Creek is a short (0.58 mile), high quality (water quality rating "A"), perennial stream that passes through Crystal Spring SNA. It contains several waterfalls and supports a healthy population of brook trout.

DISCLAIMER OF WARRANTIES AND LIMITATIONS OF LIABILITY

MinnesotaSeasons.com, The Nature Conservancy, U.S. Department of Agriculture, Forest Service, U.S. Fish and Wildlife Service, the state of Minnesota, the Minnesota Department of Natural Resources, and their employees, make no representations or warranties, express or implied, with respect to the use of or reliance on the data provided herewith, regardless of its format or means of transmission. There are no guarantees or representations to the user as to the accuracy, currency, completeness, suitability or reliability of this data for any purpose. THE USER ACCEPTS THE DATA AND/OR SOFTWARE "AS IS" AND ASSUMES ALL RISKS ASSOCIATED WITH ITS USE.

IN NO EVENT SHALL MINNESOTASEASONS.COM, TNC, USDA-FS, USFWS, OR MNDNR BE LIABLE FOR ANY DIRECT, INDIRECT, INCIDENTAL, SPECIAL, EXEMPLARY, OR CONSEQUENTIAL DAMAGES (INCLUDING, BUT NOT LIMITED TO, PROCUREMENT OF SUBSTITUTE GOODS OR SERVICES; LOSS OF USE, DATA, OR PROFITS; OR BUSINESS INTERRUPTION) HOWEVER CAUSED AND ON ANY THEORY OF LIABILITY, WHETHER IN CONTRACT, STRICT LIABILITY, OR TORT (INCLUDING NEGLIGENCE OR OTHERS) ARISING IN ANY WAY OUT OF THE USE OF THIS DATA, EVEN IF ADVISED OF THE POSSIBILITY OF SUCH DAMAGE OR FOR ANY CLAIM BY ANY OTHER PARTY.

Your use of the data is acceptance on your part of the terms and conditions set forth herein.