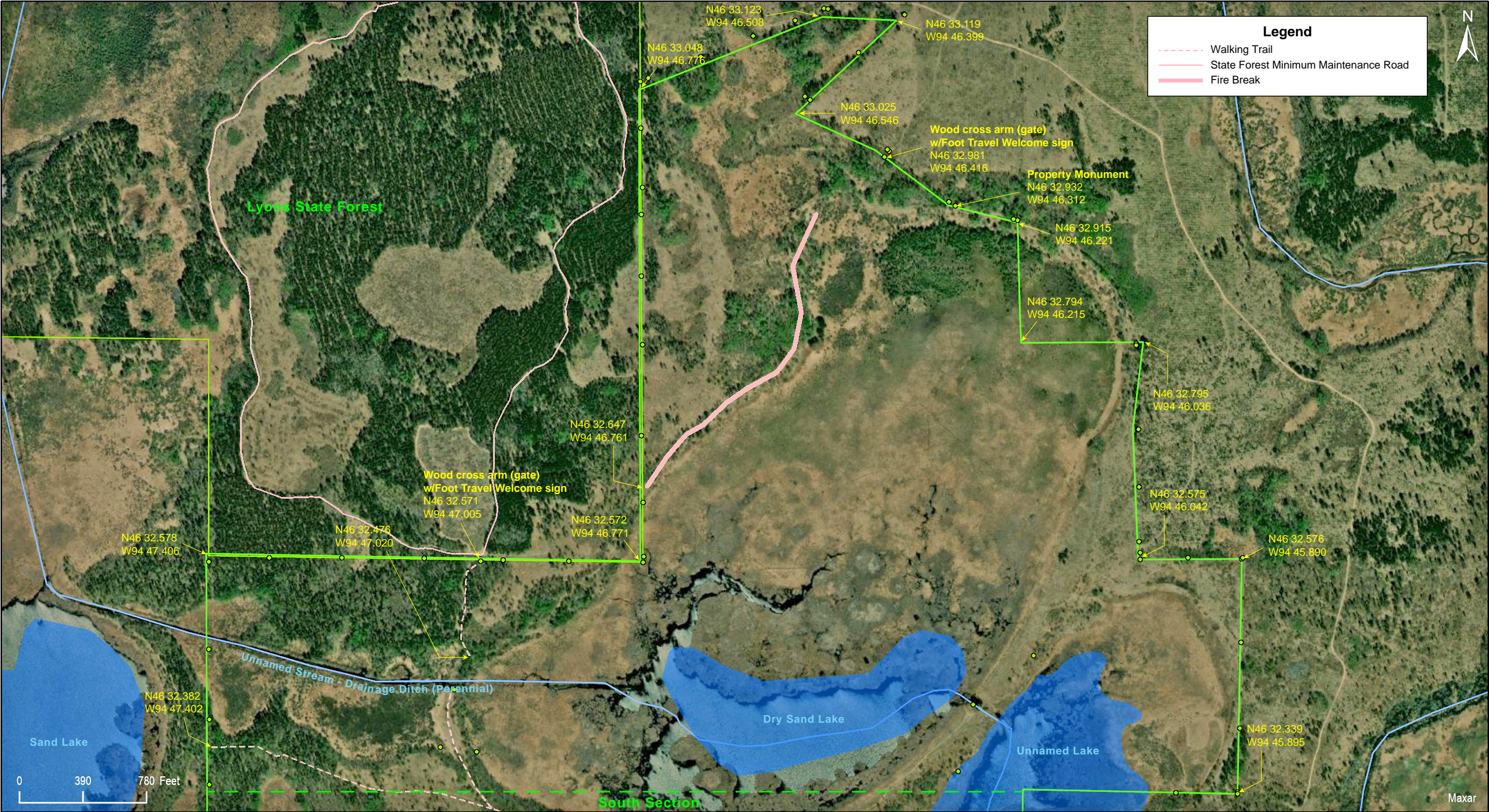


Dry Sand WMA  
North Section

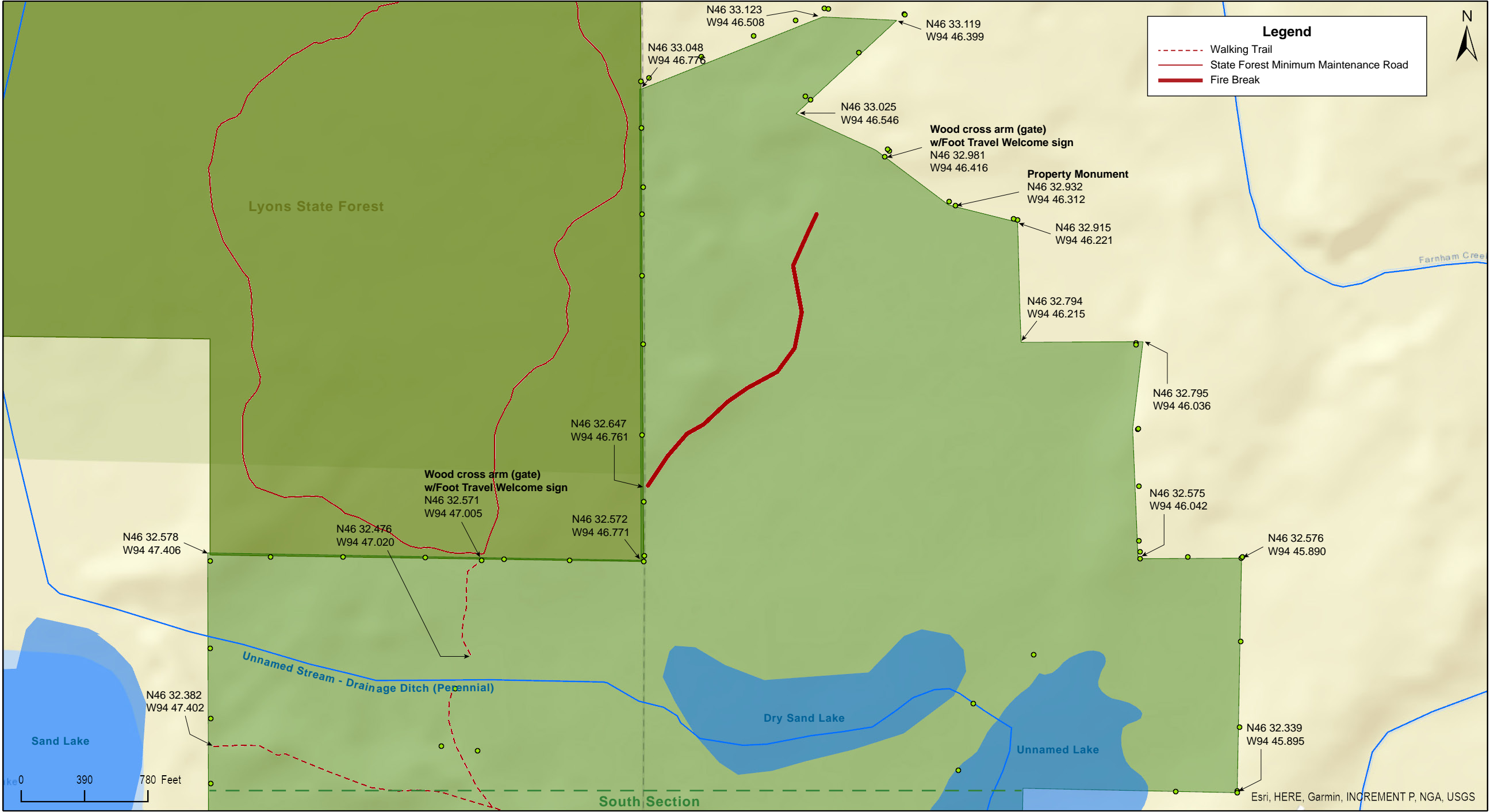
Cass and Wadena Counties





Dry Sand WMA  
North Section

Cass and Wadena Counties





Dry Sand WMA  
North Section

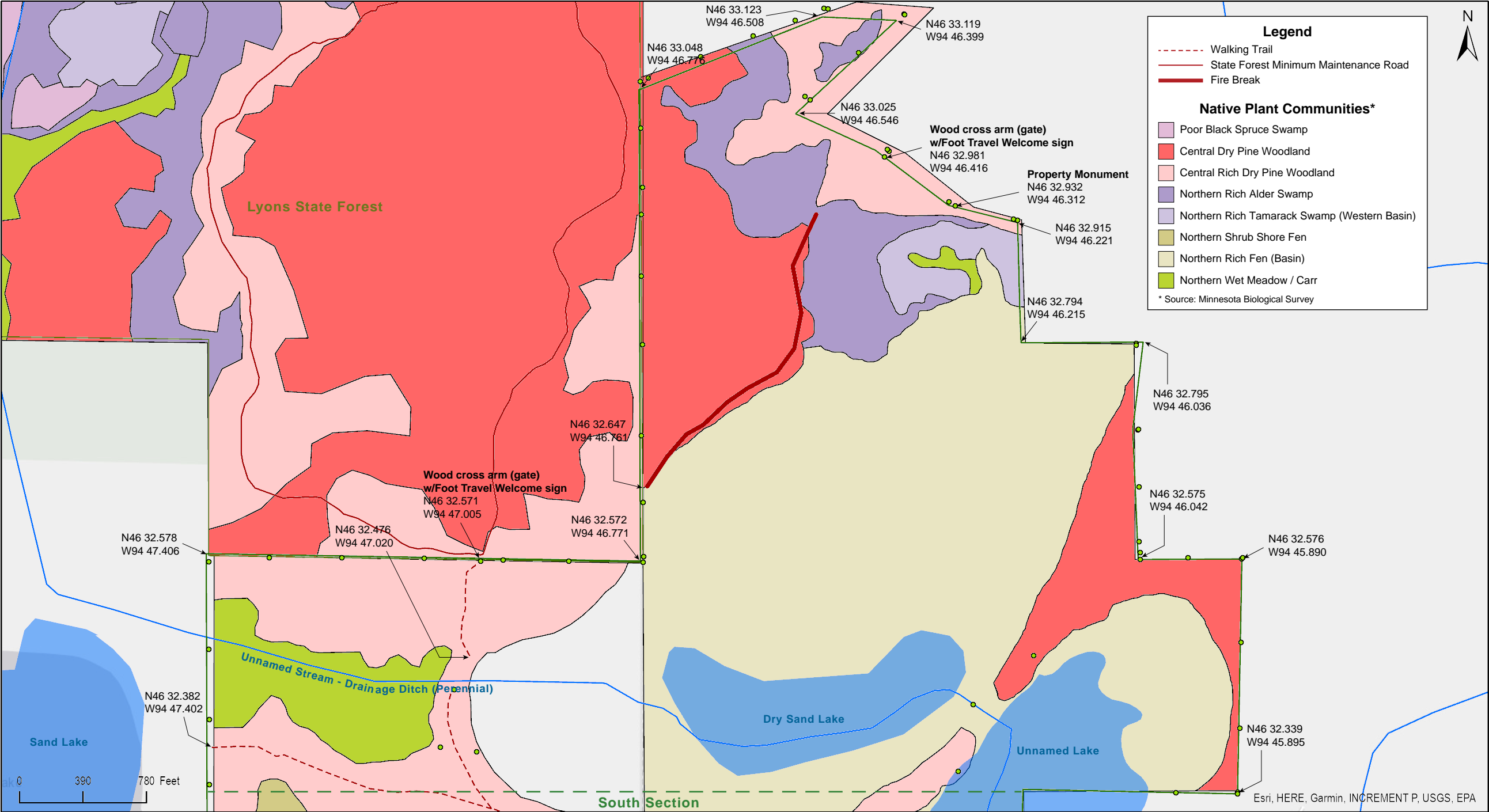
Cass and Wadena Counties





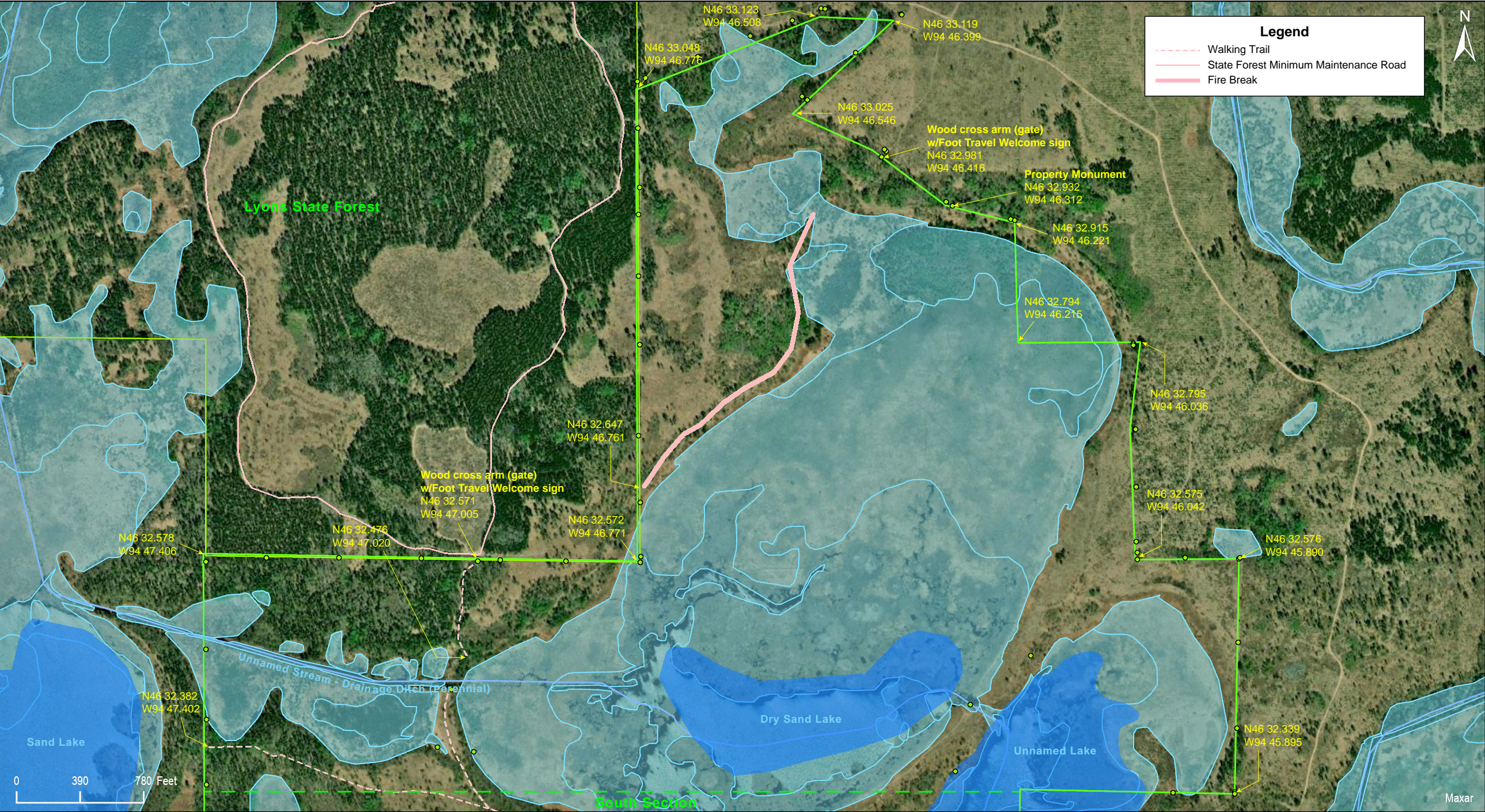
Dry Sand WMA  
North Section

Cass and Wadena Counties



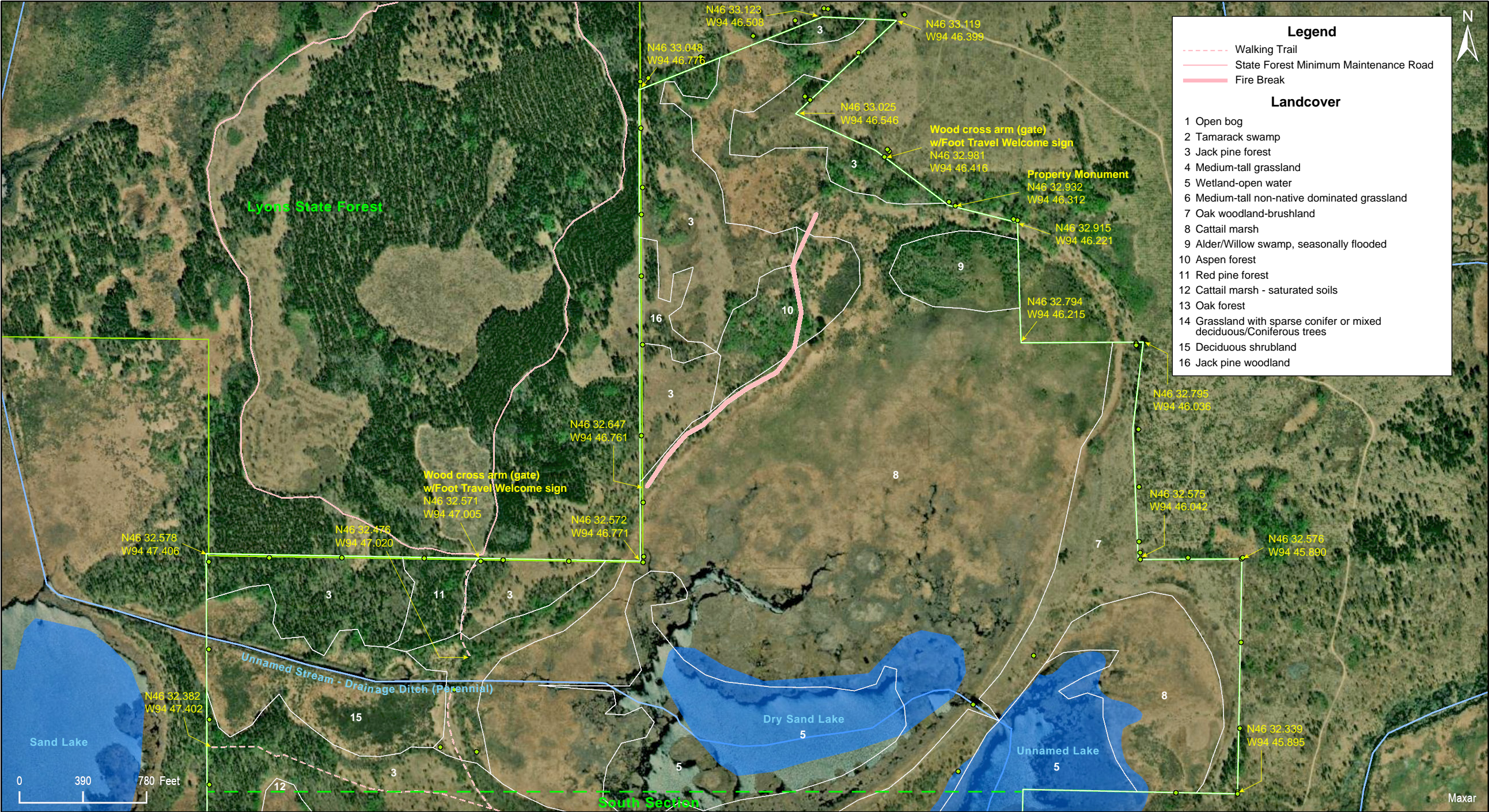


Dry Sand WMA  
North Section





Dry Sand WMA  
North Section





# Dry Sand WMA

## North Section

### Directions and Notes from Minnesota DNR

#### Directions

From the jct of CR's 227 & 26 on the south side of Nimrod, S. on Co. Rd. 26 4 miles, E. on Co. Rd. 9 4 miles, S. on Co. Rd. 30 2.8 miles, E. on gravel forest trail 1.25 miles to Dry Sand Lake access.

### Notes from MinnesotaSeasons.com

#### Parking

N46 32.250, W94 46.647

#### Hiking Trails

There is a minimum maintenance access road 1.7 miles long that passes through the site from west to east, and a short spur that leads to the south shore of Dry Sand Lake. There are also 1.96 miles of walking trails.

### DISCLAIMER OF WARRANTIES AND LIMITATIONS OF LIABILITY

MinnesotaSeasons.com, The Nature Conservancy, U.S. Department of Agriculture, Forest Service, U.S. Fish and Wildlife Service, the state of Minnesota, the Minnesota Department of Natural Resources, and their employees, make no representations or warranties, express or implied, with respect to the use of or reliance on the data provided herewith, regardless of its format or means of transmission. There are no guarantees or representations to the user as to the accuracy, currency, completeness, suitability or reliability of this data for any purpose. THE USER ACCEPTS THE DATA AND/OR SOFTWARE "AS IS" AND ASSUMES ALL RISKS ASSOCIATED WITH ITS USE.

IN NO EVENT SHALL MINNESOTASEASONS.COM, TNC, USDA-FS, USFWS, OR MNDNR BE LIABLE FOR ANY DIRECT, INDIRECT, INCIDENTAL, SPECIAL, EXEMPLARY, OR CONSEQUENTIAL DAMAGES (INCLUDING, BUT NOT LIMITED TO, PROCUREMENT OF SUBSTITUTE GOODS OR SERVICES; LOSS OF USE, DATA, OR PROFITS; OR BUSINESS INTERRUPTION) HOWEVER CAUSED AND ON ANY THEORY OF LIABILITY, WHETHER IN CONTRACT, STRICT LIABILITY, OR TORT (INCLUDING NEGLIGENCE OR OTHERS) ARISING IN ANY WAY OUT OF THE USE OF THIS DATA, EVEN IF ADVISED OF THE POSSIBILITY OF SUCH DAMAGE OR FOR ANY CLAIM BY ANY OTHER PARTY.

Your use of the data is acceptance on your part of the terms and conditions set forth herein.