



Dye WMA

Carlton County



N46 28.129
W92 35.076

N46 27.895
W92 34.897

N46 28.130
W92 34.444

N46 27.696
W92 35.075

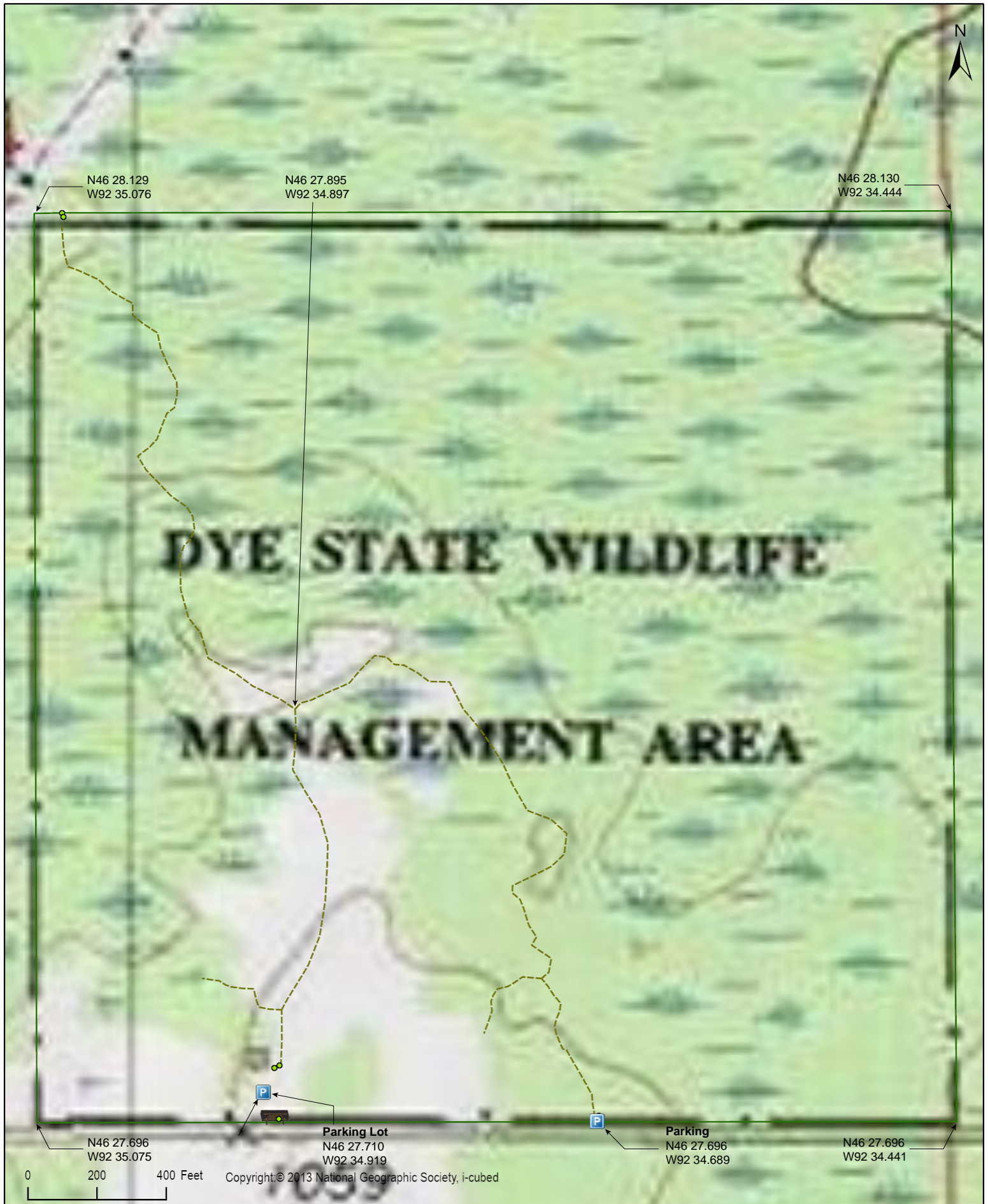
Parking Lot
N46 27.710
W92 34.919

Parking
N46 27.696
W92 34.689

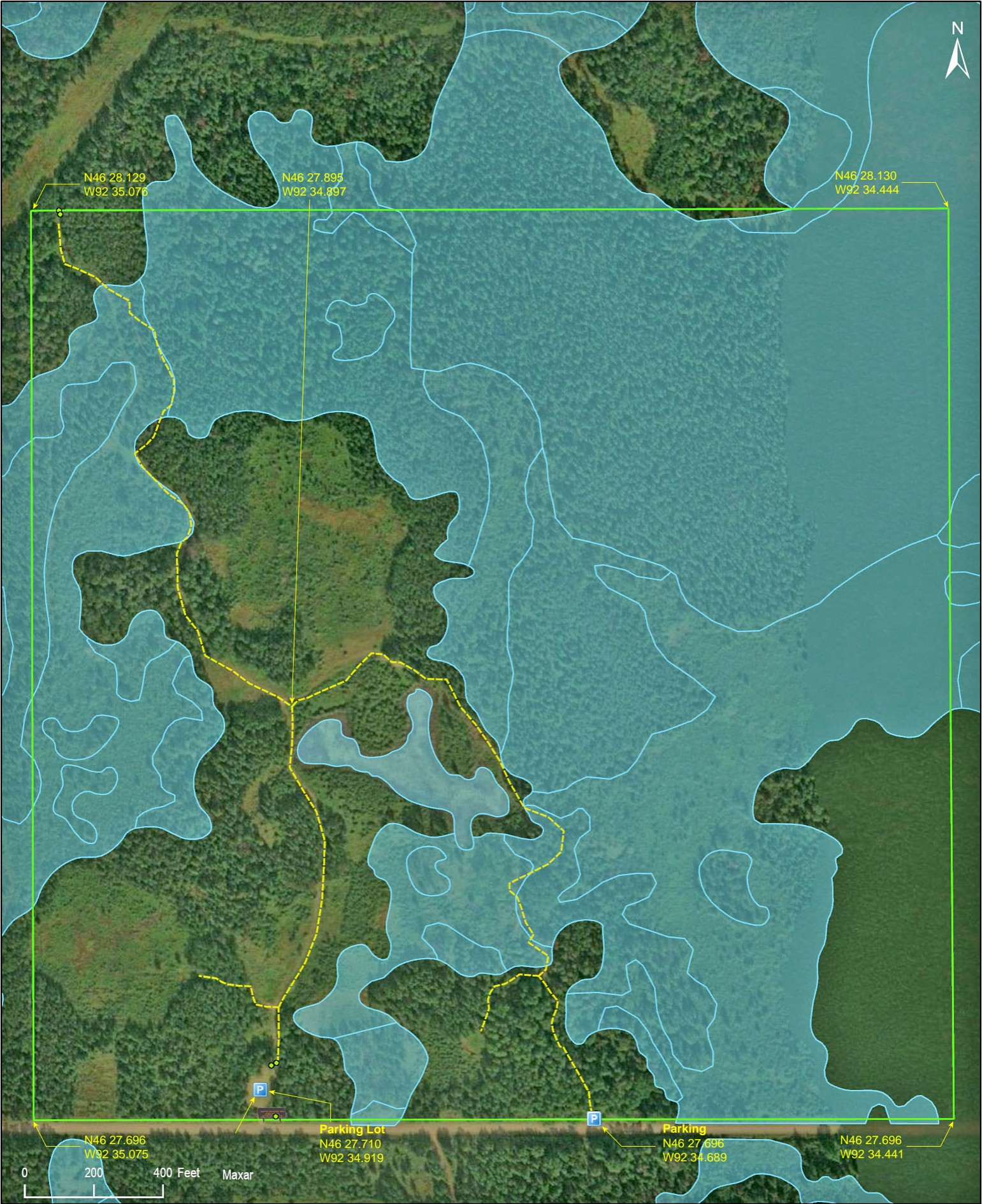
N46 27.696
W92 34.441

0 200 400 Feet

Esri, HERE, Garmin, INCREMENT P, NGA, USGS







Dye WMA

Directions and Notes from Minnesota DNR

Directions

From Moose Lake, go 8 miles E on CSAH 8.

There is one parking lot on the SW side of the WMA.

This WMA has several walking trails and offers blueberry picking opportunities.

Notes from MinnesotaSeasons.com

Parking

There is a large parking lot with a natural/grass surface with room for several vehicles on the north side of County Highway 8 near the southwest corner of the WMA.

N46 27.710, W92 34.919

There is a small parking spot with a natural/grass surface and room for a single vehicle on the north side of County Highway 8 near the middle of the south boundary of the WMA.

N46 27.696, W92 34.689

There are 1.06 miles of hunter walking trails on the WMA.

DISCLAIMER OF WARRANTIES AND LIMITATIONS OF LIABILITY

MinnesotaSeasons.com, The Nature Conservancy, U.S. Department of Agriculture, Forest Service, U.S. Fish and Wildlife Service, the state of Minnesota, the Minnesota Department of Natural Resources, and their employees, make no representations or warranties, express or implied, with respect to the use of or reliance on the data provided herewith, regardless of its format or means of transmission. There are no guarantees or representations to the user as to the accuracy, currency, completeness, suitability or reliability of this data for any purpose. THE USER ACCEPTS THE DATA AND/OR SOFTWARE "AS IS" AND ASSUMES ALL RISKS ASSOCIATED WITH ITS USE.

IN NO EVENT SHALL MINNESOTASEASONS.COM, TNC, USDA-FS, USFWS, OR MNDNR BE LIABLE FOR ANY DIRECT, INDIRECT, INCIDENTAL, SPECIAL, EXEMPLARY, OR CONSEQUENTIAL DAMAGES (INCLUDING, BUT NOT LIMITED TO, PROCUREMENT OF SUBSTITUTE GOODS OR SERVICES; LOSS OF USE, DATA, OR PROFITS; OR BUSINESS INTERRUPTION) HOWEVER CAUSED AND ON ANY THEORY OF LIABILITY, WHETHER IN CONTRACT, STRICT LIABILITY, OR TORT (INCLUDING NEGLIGENCE OR OTHERS) ARISING IN ANY WAY OUT OF THE USE OF THIS DATA, EVEN IF ADVISED OF THE POSSIBILITY OF SUCH DAMAGE OR FOR ANY CLAIM BY ANY OTHER PARTY.

Your use of the data is acceptance on your part of the terms and conditions set forth herein.