

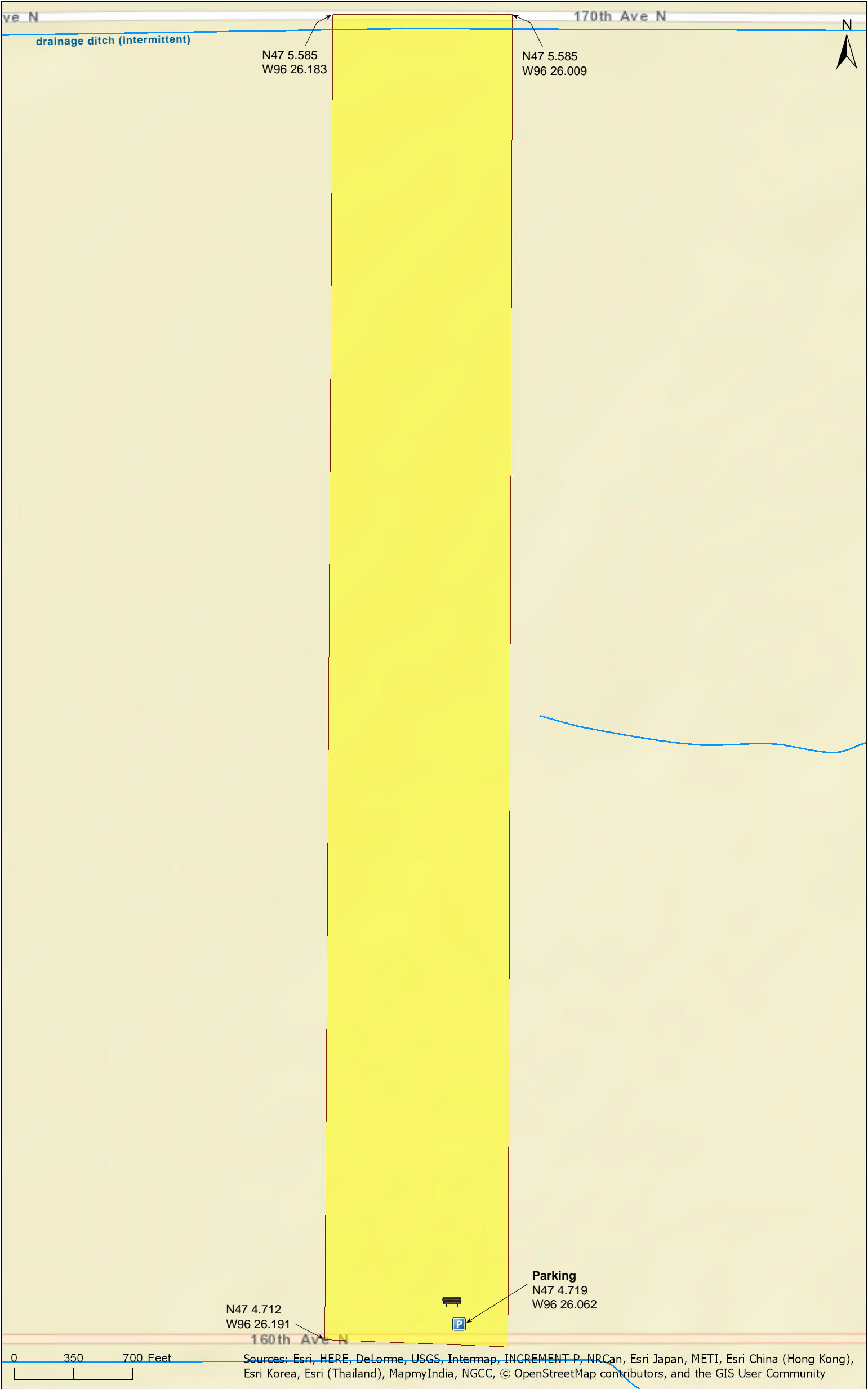
Felton Prairie SNA
Shrike Unit

Clay County



Felton Prairie SNA
Shrike Unit

Clay County



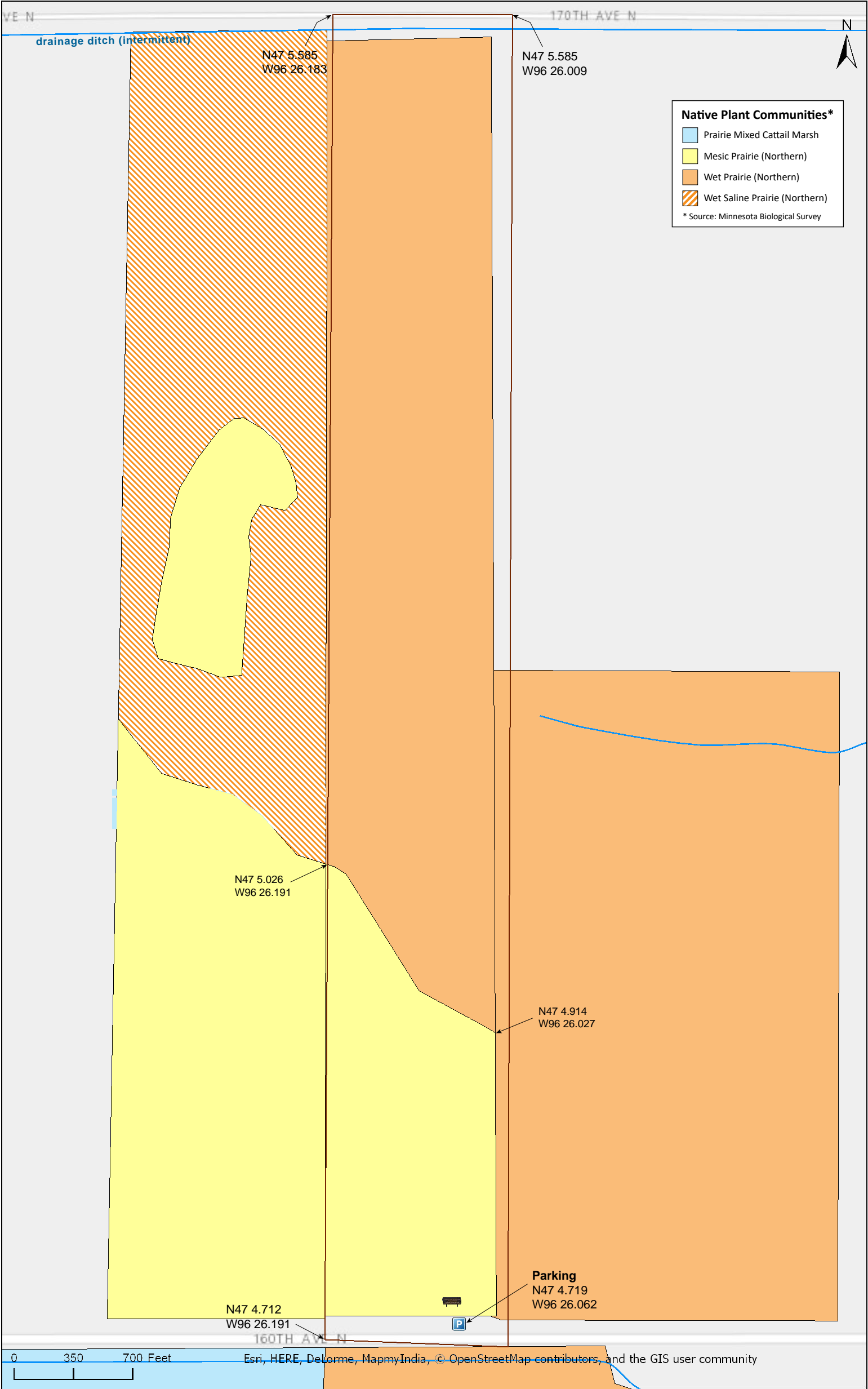
Felton Prairie SNA
Shrike Unit

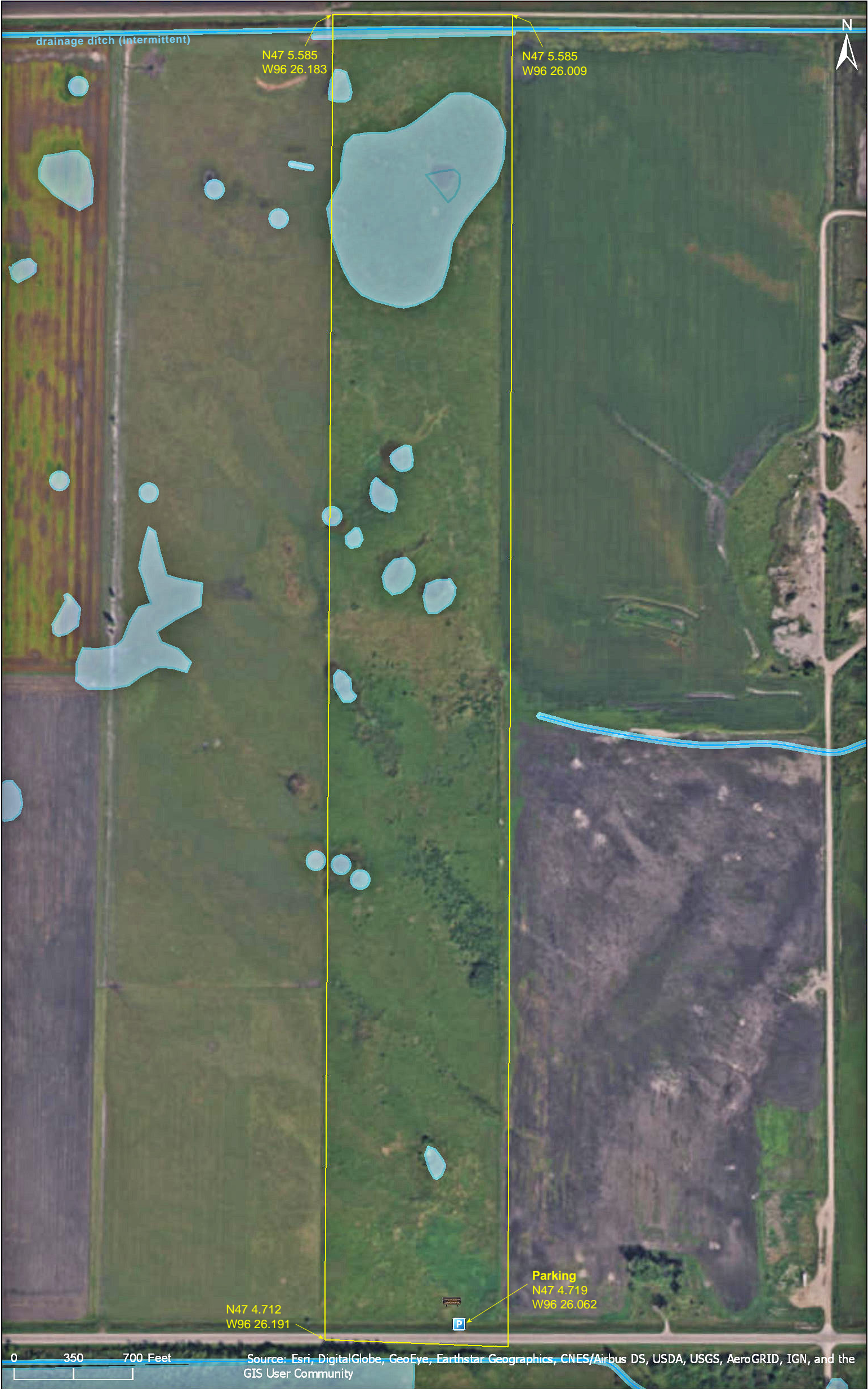
Clay County



Felton Prairie SNA
Shrike Unit

Clay County





Felton Prairie SNA Shrike Unit

Directions and Notes from Minnesota DNR

Directions: From Felton 3 miles E on Co Hwy 34. Park in pull-off on N, near wood-routed sign.

Lat/Lon: 47.07863, -96.434356

This site has no maintained trails or other recreational facilities. This site is in an Audubon Important Bird Area and Watchable Wildlife Viewing Area.

Notes from MinnesotaSeasons.com

Parking

N47 4.719, W96 26.062

This is one of four units of the Felton Prairie SNA.

The northern two-thirds of this unit is wet prairie, the southern one-third is mesic prairie.

DISCLAIMER OF WARRANTIES AND LIMITATIONS OF LIABILITY

MinnesotaSeasons.com, The Nature Conservancy, U.S. Department of Agriculture, Forest Service, U.S. Fish and Wildlife Service, the state of Minnesota, the Minnesota Department of Natural Resources, and their employees, make no representations or warranties, express or implied, with respect to the use of or reliance on the data provided herewith, regardless of its format or means of transmission. There are no guarantees or representations to the user as to the accuracy, currency, completeness, suitability or reliability of this data for any purpose. THE USER ACCEPTS THE DATA AND/OR SOFTWARE "AS IS" AND ASSUMES ALL RISKS ASSOCIATED WITH ITS USE.

IN NO EVENT SHALL MINNESOTASEASONS.COM, TNC, USDA-FS, USFWS, OR MNDNR BE LIABLE FOR ANY DIRECT, INDIRECT, INCIDENTAL, SPECIAL, EXEMPLARY, OR CONSEQUENTIAL DAMAGES (INCLUDING, BUT NOT LIMITED TO, PROCUREMENT OF SUBSTITUTE GOODS OR SERVICES; LOSS OF USE, DATA, OR PROFITS; OR BUSINESS INTERRUPTION) HOWEVER CAUSED AND ON ANY THEORY OF LIABILITY, WHETHER IN CONTRACT, STRICT LIABILITY, OR TORT (INCLUDING NEGLIGENCE OR OTHERS) ARISING IN ANY WAY OUT OF THE USE OF THIS DATA, EVEN IF ADVISED OF THE POSSIBILITY OF SUCH DAMAGE OR FOR ANY CLAIM BY ANY OTHER PARTY.

Your use of the data is acceptance on your part of the terms and conditions set forth herein.