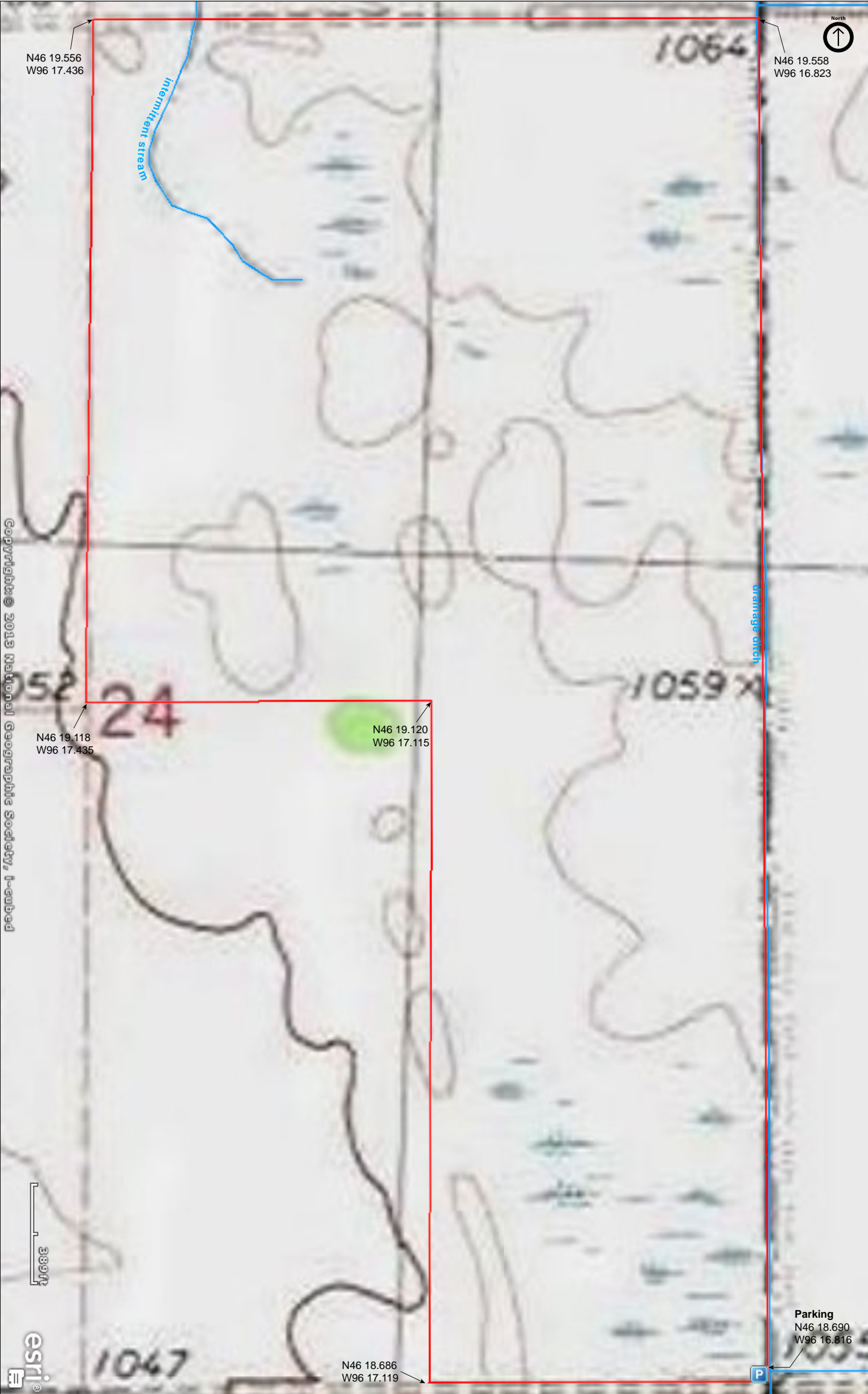




Foxhome Prairie

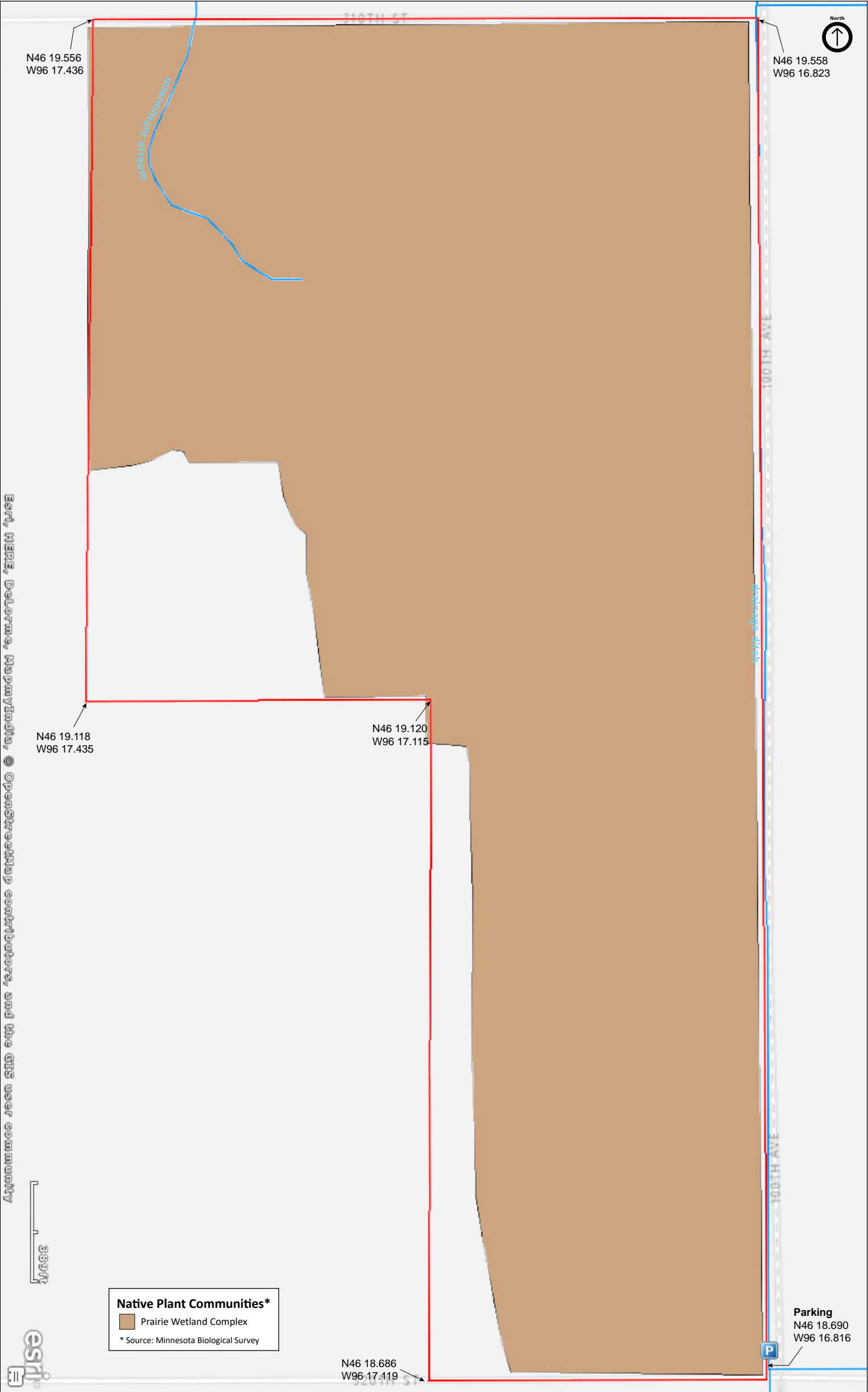
Wilkin County





Foxhome Prairie

Wilkin County





Foxhome Prairie

Directions and Notes from The Nature Conservancy

To travel to Foxhome Prairie Preserve, drive west of Foxhome on State Highway 210 to the intersection with County Road 19. Turn north and proceed three miles north, and then turn east on a gravel road. Take this road for 1.5 miles, where Nature Conservancy signs will mark the prairie along the south side of the road. You can park on the road on the north, east, or south side of the preserve. Nearest facilities are located in Foxhome, Rothsay and Fergus Falls.

Notes from MinnesotaSeasons.com

Parking

N46 19.560, W96 17.431

There is no designated parking spot. The road on the east side is a “two-rut” road. It may be the best place to park, though there is no place to pull off the road.

DISCLAIMER OF WARRANTIES AND LIMITATIONS OF LIABILITY

MinnesotaSeasons.com, The Nature Conservancy, U.S. Department of Agriculture, Forest Service, U.S. Fish and Wildlife Service, the state of Minnesota, the Minnesota Department of Natural Resources, and their employees, make no representations or warranties, express or implied, with respect to the use of or reliance on the data provided herewith, regardless of its format or means of transmission. There are no guarantees or representations to the user as to the accuracy, currency, completeness, suitability or reliability of this data for any purpose. THE USER ACCEPTS THE DATA AND/OR SOFTWARE "AS IS" AND ASSUMES ALL RISKS ASSOCIATED WITH ITS USE.

IN NO EVENT SHALL MINNESOTASEASONS.COM, TNC, USDA-FS, USFWS, OR MNDNR BE LIABLE FOR ANY DIRECT, INDIRECT, INCIDENTAL, SPECIAL, EXEMPLARY, OR CONSEQUENTIAL DAMAGES (INCLUDING, BUT NOT LIMITED TO, PROCUREMENT OF SUBSTITUTE GOODS OR SERVICES; LOSS OF USE, DATA, OR PROFITS; OR BUSINESS INTERRUPTION) HOWEVER CAUSED AND ON ANY THEORY OF LIABILITY, WHETHER IN CONTRACT, STRICT LIABILITY, OR TORT (INCLUDING NEGLIGENCE OR OTHERS) ARISING IN ANY WAY OUT OF THE USE OF THIS DATA, EVEN IF ADVISED OF THE POSSIBILITY OF SUCH DAMAGE OR FOR ANY CLAIM BY ANY OTHER PARTY.

Your use of the data is acceptance on your part of the terms and conditions set forth herein.