

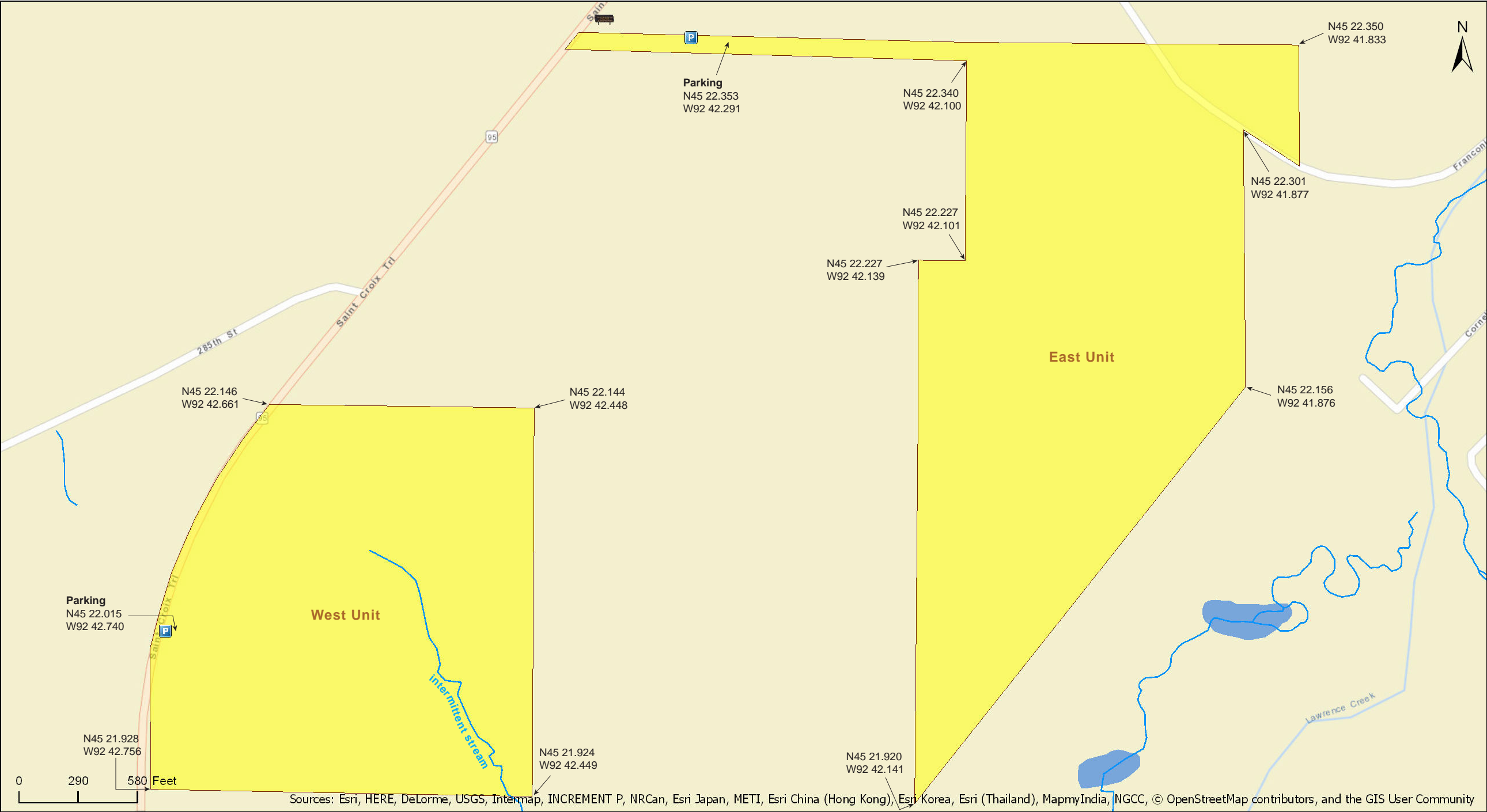
Franconia Bluffs SNA

Goodhue County



Franconia Bluffs SNA

Goodhue County



Franconia Bluffs SNA

Goodhue County



Copyright: © 2013 National Geographic Society, i-cubed

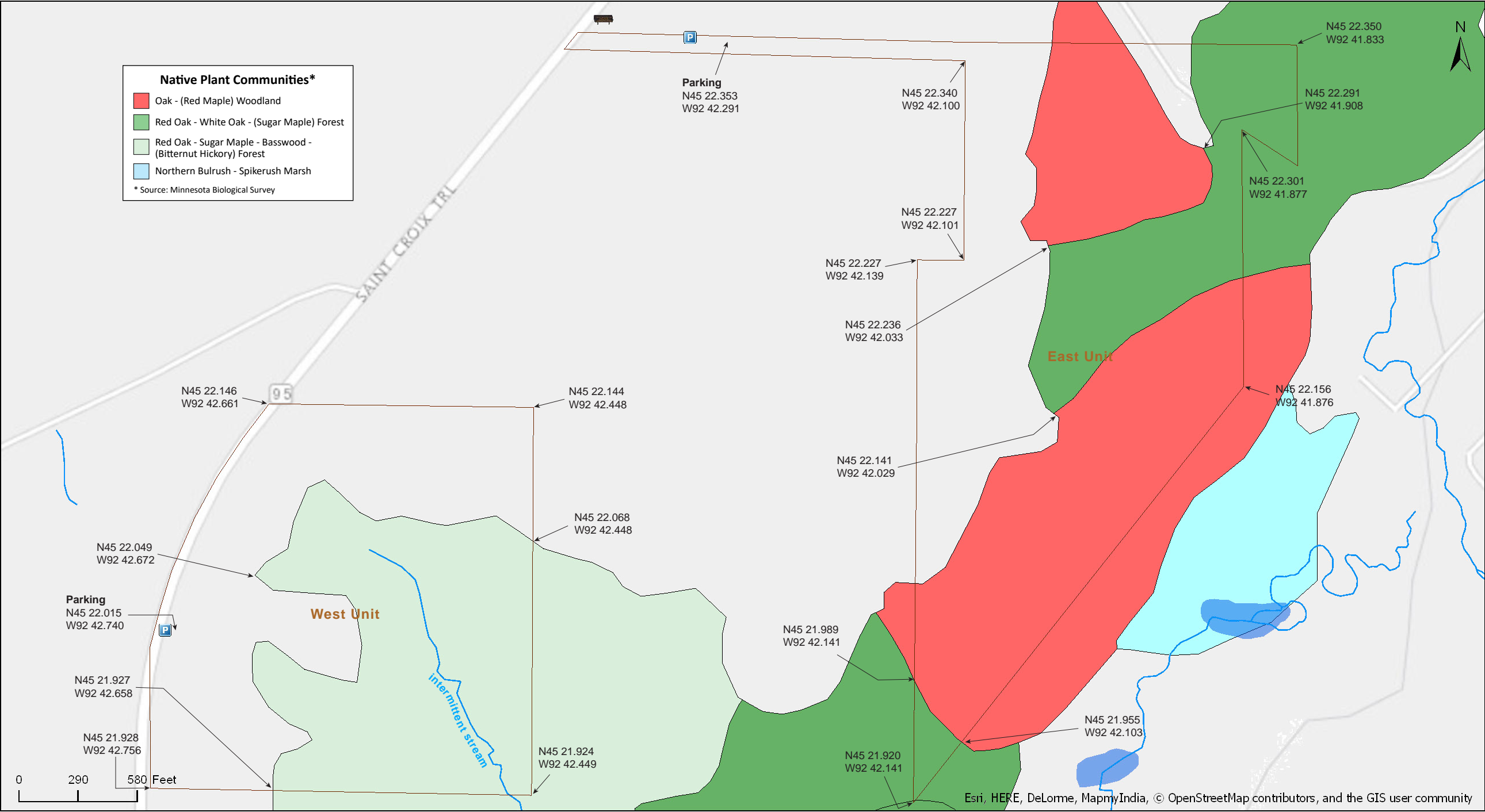
Franconia Bluffs SNA

Goodhue County

Native Plant Communities*

- Oak - (Red Maple) Woodland
- Red Oak - White Oak - (Sugar Maple) Forest
- Red Oak - Sugar Maple - Basswood - (Bitternut Hickory) Forest
- Northern Bulrush - Spikerush Marsh

* Source: Minnesota Biological Survey





Franconia Bluffs SNA

Directions and Notes from Minnesota DNR

East Unit

Directions: From Taylors Falls 3.25 miles SW on US Hwy 8, then 0.75 mile S on MN Hwy 95, then 370 feet E on drive to parking. Hike E within signed corridor to bluffs. No parking allowed along Franconia Trl.

Lat/Lon: 45.372498, -92.705362

West Unit

Directions: From Taylors Falls 3.25 miles SW on US Hwy 8, then 1.25 miles S on MN Hwy 95. Park in pull-off on E.

Lat/Lon: 45.366905, -92.71241

This site has no maintained trails or other recreational facilities. This site is an Audubon Important Bird Area.

Notes from MinnesotaSeasons.com

Parking

East Unit

N45 22.353, W92 42.291

To access the east unit turn east on the gravel road by the wood SNA sign. After 50 yards the road forks, becoming two private driveways. Between the two driveways is a two track road leading 80 yards to a small parking area and a gate. From the gate walk east on the two-track road to a large clearing.

West Unit

N45 22.016, W92 42.740

To access the west unit, park on the pull-off on the east side of Highway 95 at the location above.

Mosquitos

The ravines are steep sided and shielded from the slightest breeze even on windy days. DEET is a must.

Challenging Ravine

The ravine directly east of the parking area in the West Unit is challenging. It begins as a garbage dump, apparently used for decades, then transitions into a dense prickly ash thicket that is almost impassible. Those who attempt it will come away with a few bloody scratches to help them remember the experience.

DISCLAIMER OF WARRANTIES AND LIMITATIONS OF LIABILITY

MinnesotaSeasons.com, The Nature Conservancy, U.S. Department of Agriculture, Forest Service, U.S. Fish and Wildlife Service, the state of Minnesota, the Minnesota Department of Natural Resources, and their employees, make no representations or warranties, express or implied, with respect to the use of or reliance on the data provided herewith, regardless of its format or means of transmission. There are no guarantees or representations to the user as to the accuracy, currency, completeness, suitability or reliability of this data for any purpose. THE USER ACCEPTS THE DATA AND/OR SOFTWARE "AS IS" AND ASSUMES ALL RISKS ASSOCIATED WITH ITS USE.

IN NO EVENT SHALL MINNESOTASEASONS.COM, TNC, USDA-FS, USFWS, OR MNDNR BE LIABLE FOR ANY DIRECT, INDIRECT, INCIDENTAL, SPECIAL, EXEMPLARY, OR CONSEQUENTIAL DAMAGES (INCLUDING, BUT NOT LIMITED TO, PROCUREMENT OF SUBSTITUTE GOODS OR SERVICES; LOSS OF USE, DATA, OR PROFITS; OR BUSINESS INTERRUPTION) HOWEVER CAUSED AND ON ANY THEORY OF LIABILITY, WHETHER IN CONTRACT, STRICT LIABILITY, OR TORT (INCLUDING NEGLIGENCE OR OTHERS) ARISING IN ANY WAY OUT OF THE USE OF THIS DATA, EVEN IF ADVISED OF THE POSSIBILITY OF SUCH DAMAGE OR FOR ANY CLAIM BY ANY OTHER PARTY.

Your use of the data is acceptance on your part of the terms and conditions set forth herein.