

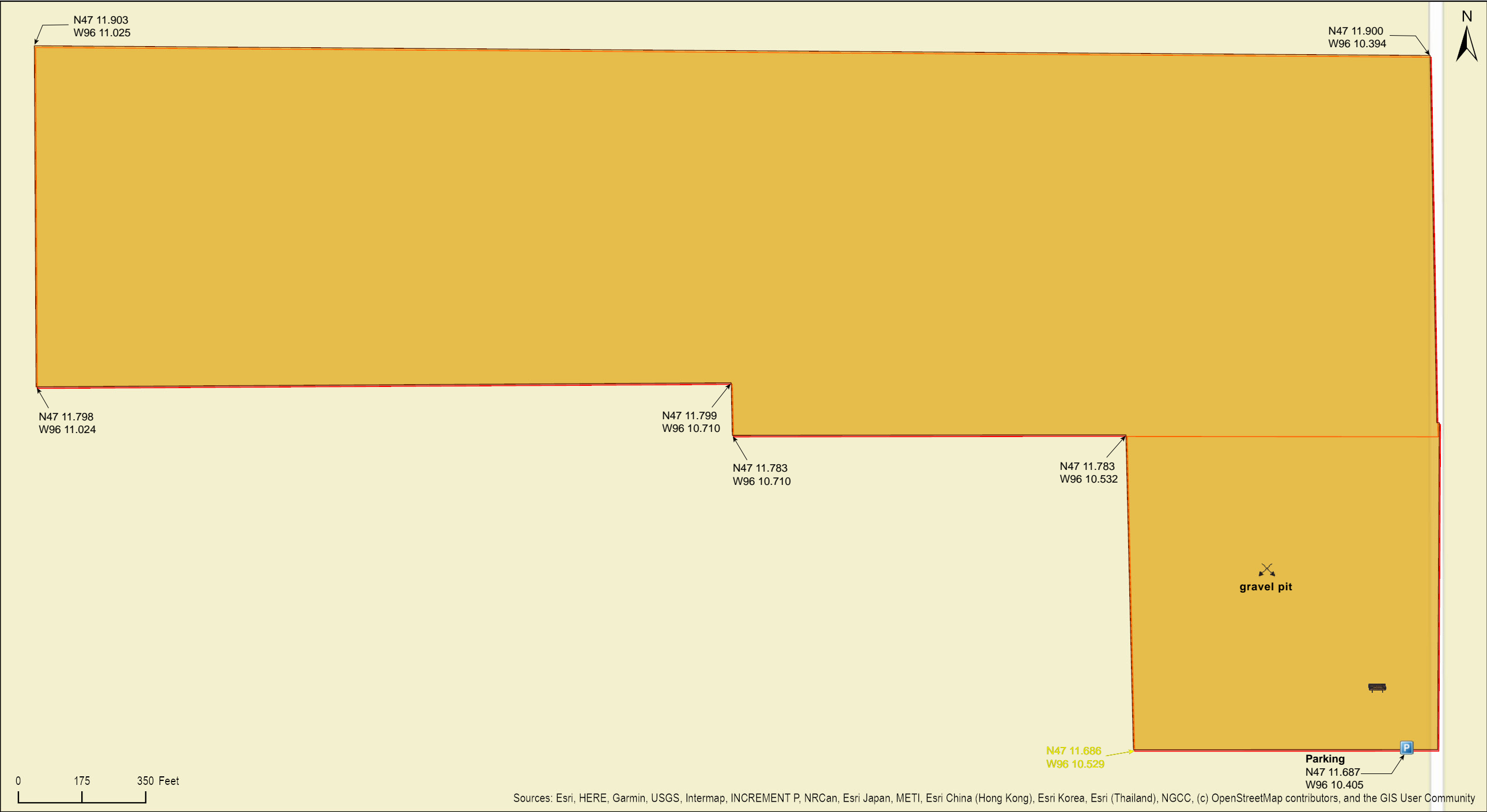
Frenchman’s Bluff SNA

Norman County



Frenchman’s Bluff SNA

Norman County





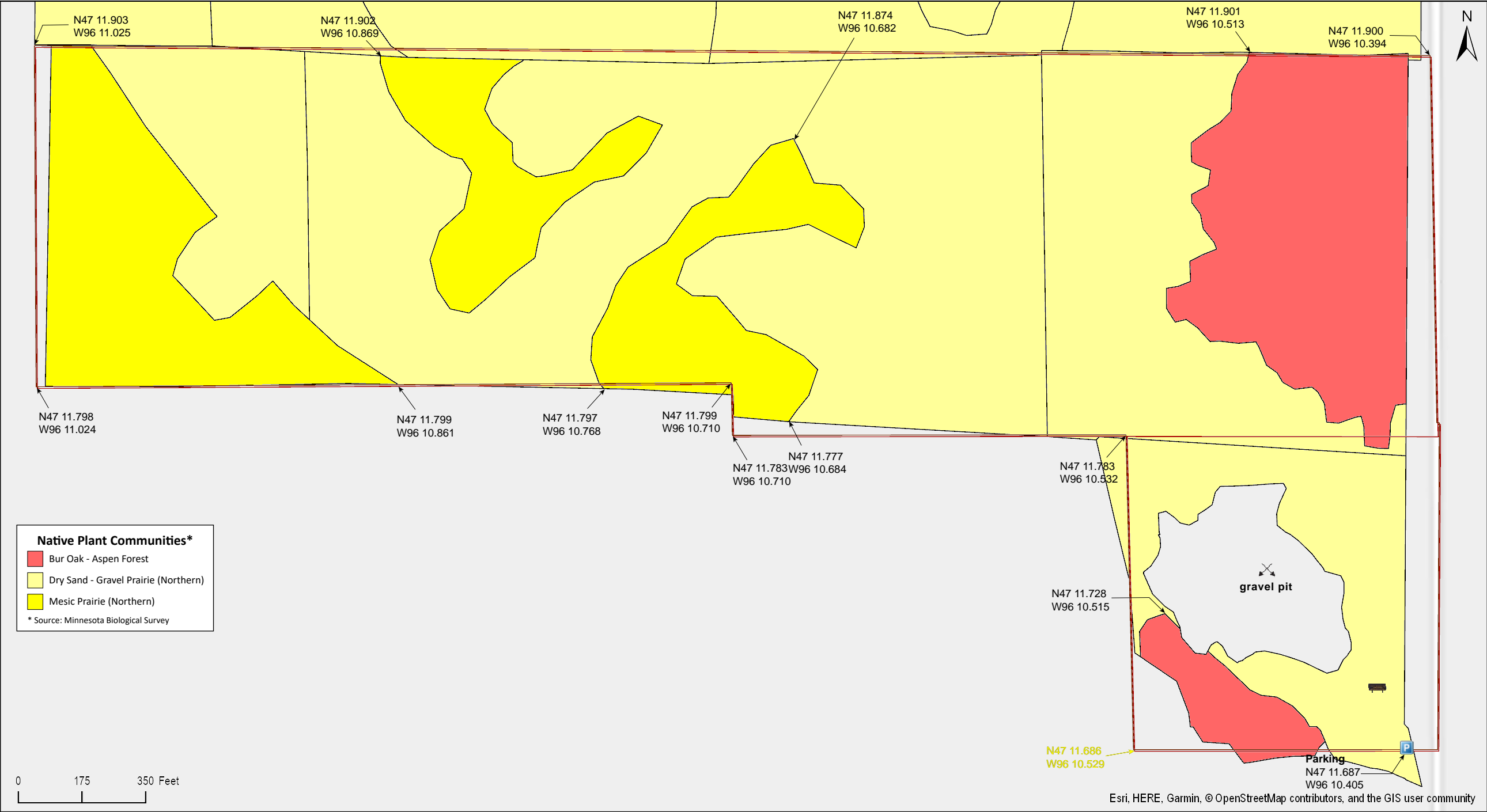
Frenchman’s Bluff SNA

Norman County



Frenchman's Bluff SNA

Norman County







# Frenchman’s Bluff SNA

## **Directions and Notes from Minnesota DNR**

### **Directions**

From Syre 4 miles E on MN Hwy 113, then 1.1 miles N on Co Hwy 36. Park in lot on W.

### **Lat/Lon**

47.194783, -96.173418

This site has no maintained trails or other recreational facilities.

This site has abundant stands of poison ivy.

## **Directions and Notes from The Nature Conservancy**

### **Location**

The preserve is located in the Flom township of Norman County, about five miles southeast of Twin Valley and 35 miles northeast of Fargo-Moorhead. From the village of Syre, take State Highway 113 east. Go north on County Road 36 for about one mile. The preserve is on the west side of the road.

The Conservancy now leases the land to the Minnesota Department of Natural Resources’ Scientific and Natural Areas Program.

## **Notes from MinnesotaSeasons.com**

### **Parking**

There is a parking lot with room for several vehicles on the west side of County Road 36 at the southeast corner of the SNA.  
N47 11.687, W96 10.405

## **DISCLAIMER OF WARRANTIES AND LIMITATIONS OF LIABILITY**

MinnesotaSeasons.com, The Nature Conservancy, U.S. Department of Agriculture, Forest Service, U.S. Fish and Wildlife Service, the state of Minnesota, the Minnesota Department of Natural Resources, and their employees, make no representations or warranties, express or implied, with respect to the use of or reliance on the data provided herewith, regardless of its format or means of transmission. There are no guarantees or representations to the user as to the accuracy, currency, completeness, suitability or reliability of this data for any purpose. THE USER ACCEPTS THE DATA AND/OR SOFTWARE "AS IS" AND ASSUMES ALL RISKS ASSOCIATED WITH ITS USE.

IN NO EVENT SHALL MINNESOTASEASONS.COM, TNC, USDA-FS, USFWS, OR MNDNR BE LIABLE FOR ANY DIRECT, INDIRECT, INCIDENTAL, SPECIAL, EXEMPLARY, OR CONSEQUENTIAL DAMAGES (INCLUDING, BUT NOT LIMITED TO, PROCUREMENT OF SUBSTITUTE GOODS OR SERVICES; LOSS OF USE, DATA, OR PROFITS; OR BUSINESS INTERRUPTION) HOWEVER CAUSED AND ON ANY THEORY OF LIABILITY, WHETHER IN CONTRACT, STRICT LIABILITY, OR TORT (INCLUDING NEGLIGENCE OR OTHERS) ARISING IN ANY WAY OUT OF THE USE OF THIS DATA, EVEN IF ADVISED OF THE POSSIBILITY OF SUCH DAMAGE OR FOR ANY CLAIM BY ANY OTHER PARTY.

Your use of the data is acceptance on your part of the terms and conditions set forth herein.