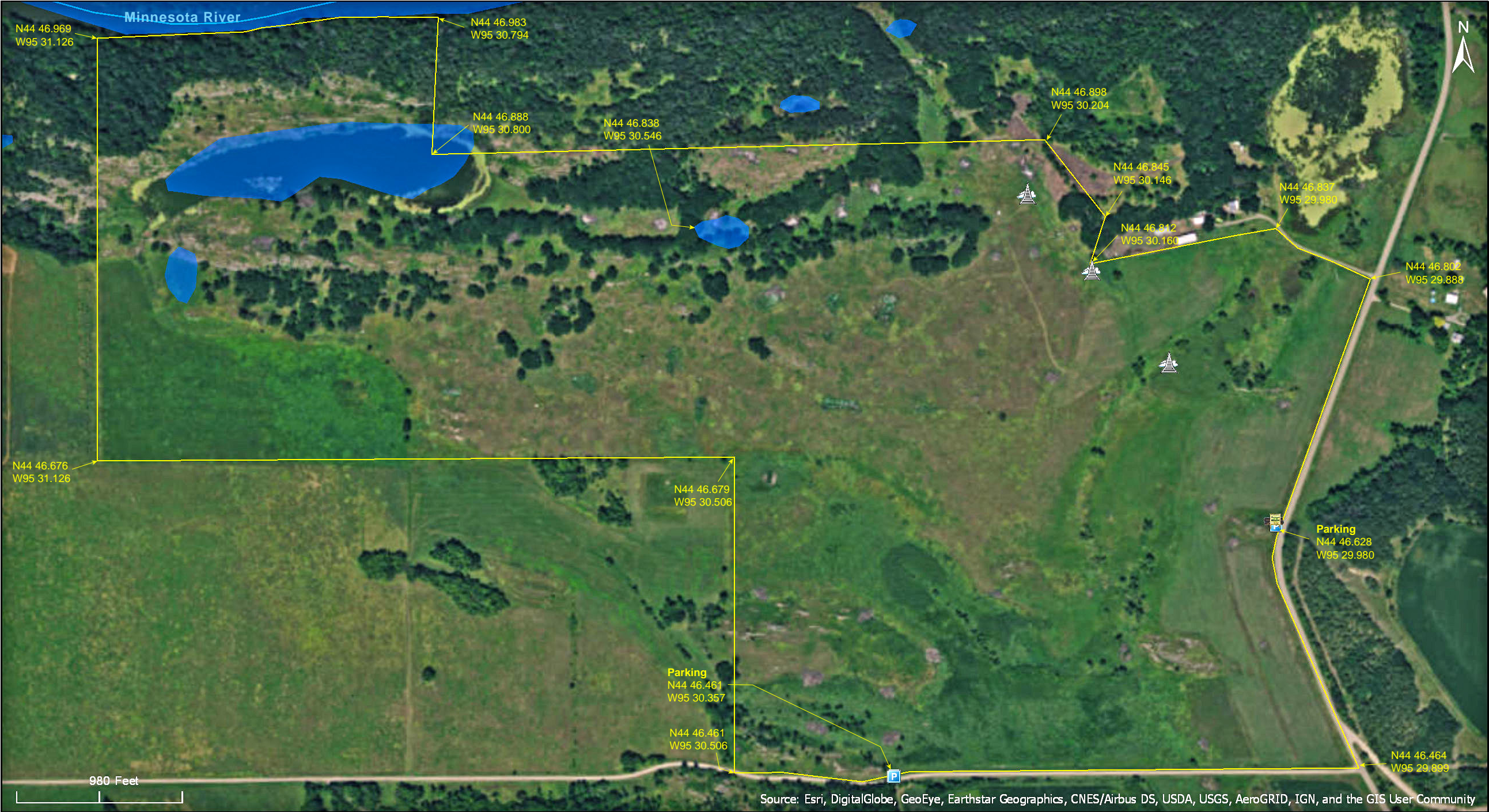


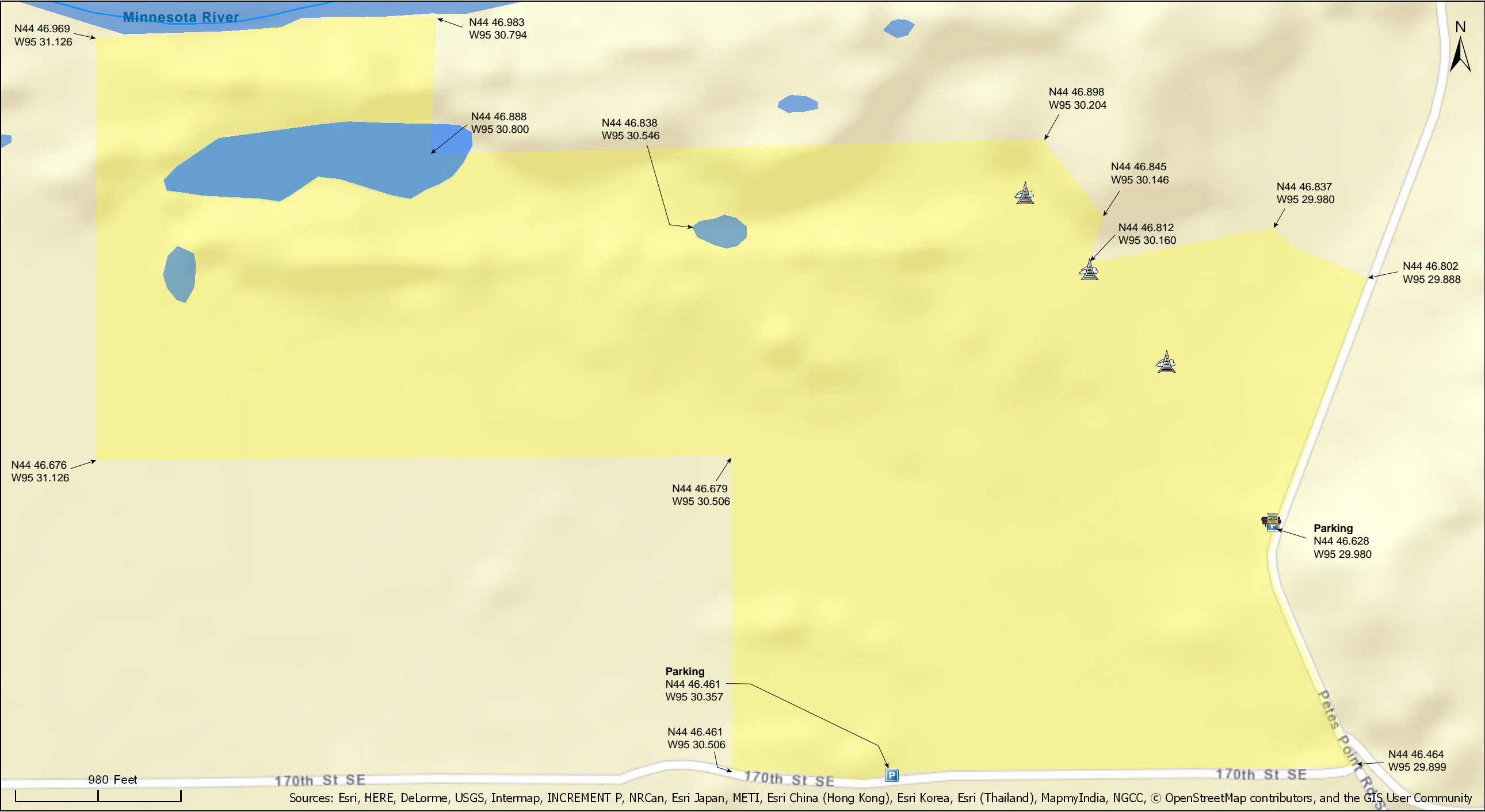
Gneiss Outcrops SNA

Chippewa County



Gneiss Outcrops SNA

Chippewa County



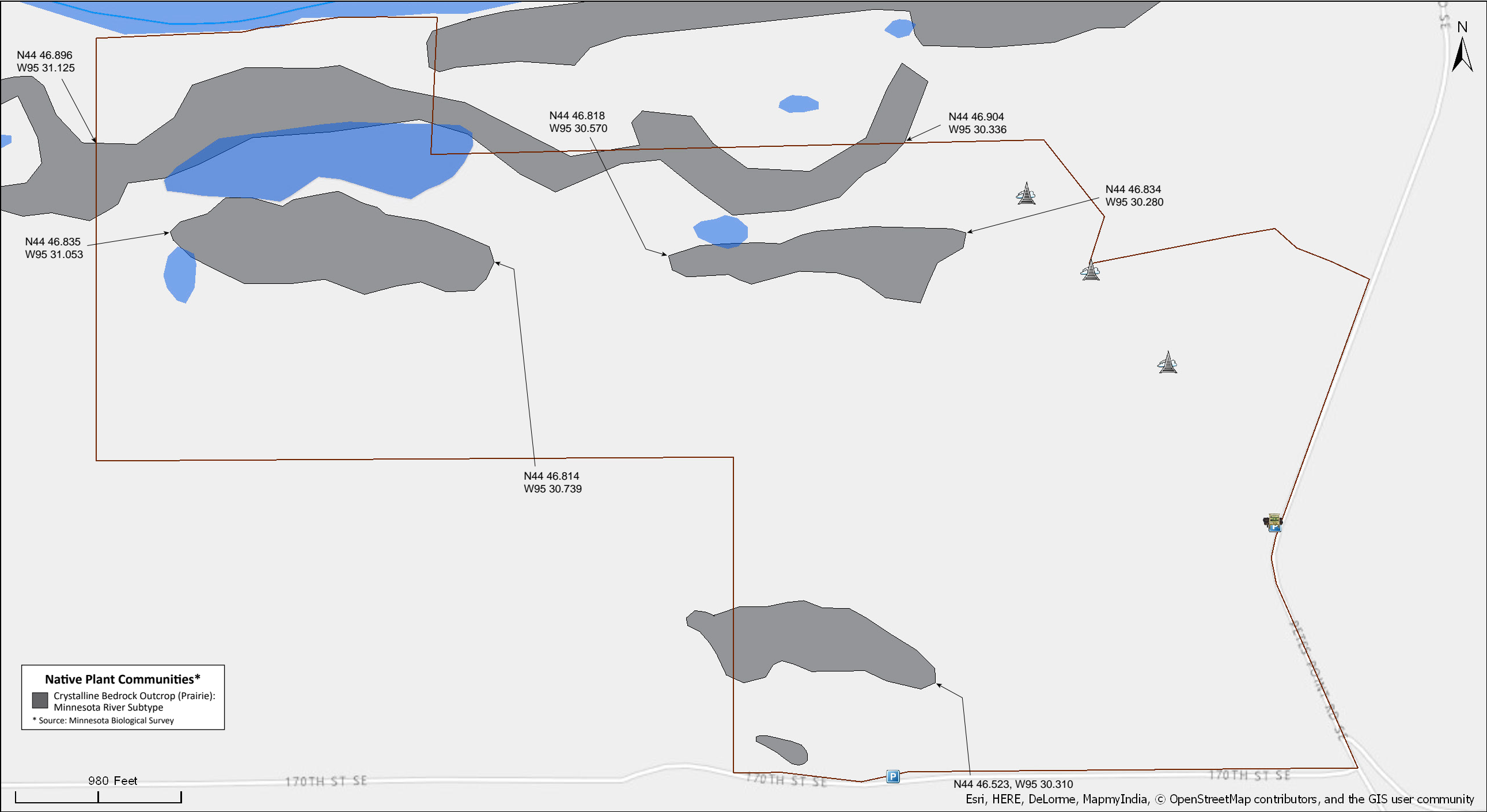
Gneiss Outcrops SNA

Chippewa County



Gneiss Outcrops SNA

Chippewa County





Source: Esri, DigitalGlobe, GeoEye, Earthstar Geographics, CNES/Airbus DS, USDA, USGS, AeroGRID, IGN, and the GIS User Community

Gneiss Outcrops SNA

Directions and Notes from Minnesota DNR

Directions: From Granite Falls, 1.5 miles E on MN Hwy 212, then 2.5 miles S on Co Rd 40. Park on W road shoulder near wood-routed sign.

Lat/Lon: 44.777121, -95.499669

This site has no maintained trails or other recreational facilities.

The Minnesota River Water Trail is adjacent to this site.

Notes from MinnesotaSeasons.com

Parking

Cty Rd 40: N44 46.628, W95 29.980
170th St.: N44 46.461, W95 30.357

The parking area shown on the DNR Website is on the narrow shoulder at a curve in a narrow road (Cty Rd 40). A much safer parking spot is a pull off on the north side of 170th St. 0.37 miles west of Cty Rd 40.

Wet Site

In a wet season, such as the spring of 2012, most of the site that is under 900 feet in altitude (see topographic map, page 3) is under water. From the parking spot only a small portion of the SNA is accessible. The remainder of the site can be accessed from the terraced meadow at the eastern edge of the SNA.

DISCLAIMER OF WARRANTIES AND LIMITATIONS OF LIABILITY

MinnesotaSeasons.com, The Nature Conservancy, U.S. Department of Agriculture, Forest Service, U.S. Fish and Wildlife Service, the state of Minnesota, the Minnesota Department of Natural Resources, and their employees, make no representations or warranties, express or implied, with respect to the use of or reliance on the data provided herewith, regardless of its format or means of transmission. There are no guarantees or representations to the user as to the accuracy, currency, completeness, suitability or reliability of this data for any purpose. THE USER ACCEPTS THE DATA AND/OR SOFTWARE "AS IS" AND ASSUMES ALL RISKS ASSOCIATED WITH ITS USE.

IN NO EVENT SHALL MINNESOTASEASONS.COM, TNC, USDA-FS, USFWS, OR MNDNR BE LIABLE FOR ANY DIRECT, INDIRECT, INCIDENTAL, SPECIAL, EXEMPLARY, OR CONSEQUENTIAL DAMAGES (INCLUDING, BUT NOT LIMITED TO, PROCUREMENT OF SUBSTITUTE GOODS OR SERVICES; LOSS OF USE, DATA, OR PROFITS; OR BUSINESS INTERRUPTION) HOWEVER CAUSED AND ON ANY THEORY OF LIABILITY, WHETHER IN CONTRACT, STRICT LIABILITY, OR TORT (INCLUDING NEGLIGENCE OR OTHERS) ARISING IN ANY WAY OUT OF THE USE OF THIS DATA, EVEN IF ADVISED OF THE POSSIBILITY OF SUCH DAMAGE OR FOR ANY CLAIM BY ANY OTHER PARTY.

Your use of the data is acceptance on your part of the terms and conditions set forth herein.