

Grey Cloud Dunes SNA

Washington County



Mississippi River Trail Bikeway

Parking
N44 48.051
W92 57.869

N44 48.057
W92 57.561

N44 47.664
W92 57.889

N44 47.373
W92 57.892

Burlington Northern Santa Fe

Parking
N44 47.405
W92 57.304

N44 47.123
W92 57.278

N44 47.076
W92 57.277

Mooers Lake
(Mississippi River)

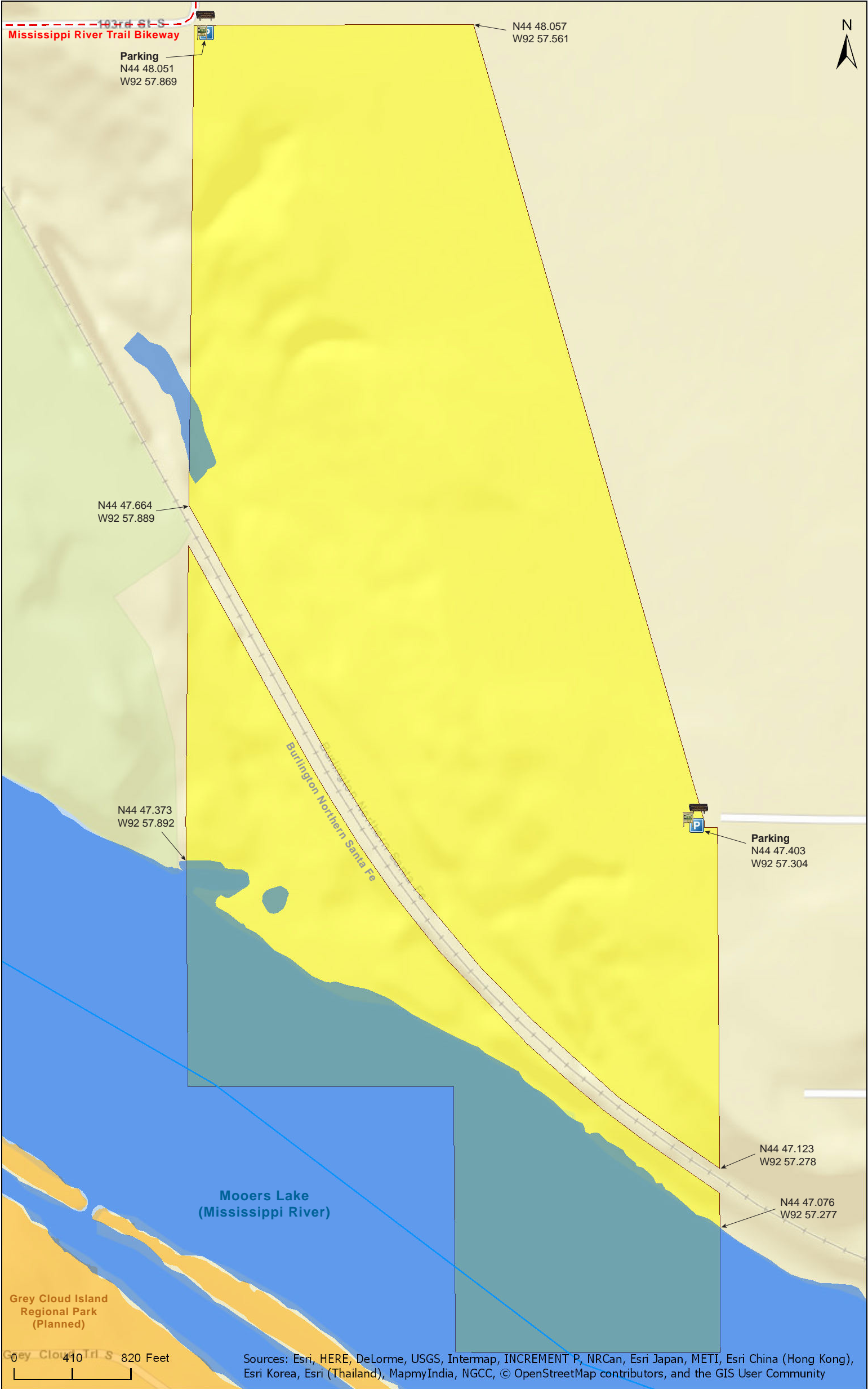
Grey Cloud Island
Regional Park
(Planned)

0 410 820 Feet

Source: Esri, DigitalGlobe, GeoEye, Earthstar Geographics, CNES/Airbus DS, USDA, USGS, AeroGRID, IGN, and the GIS User Community

Grey Cloud Dunes SNA

Washington County



Sources: Esri, HERE, DeLorme, USGS, Intermap, INCREMENT P, NRCan, Esri Japan, METI, Esri China (Hong Kong), Esri Korea, Esri (Thailand), MapmyIndia, NGCC, © OpenStreetMap contributors, and the GIS User Community

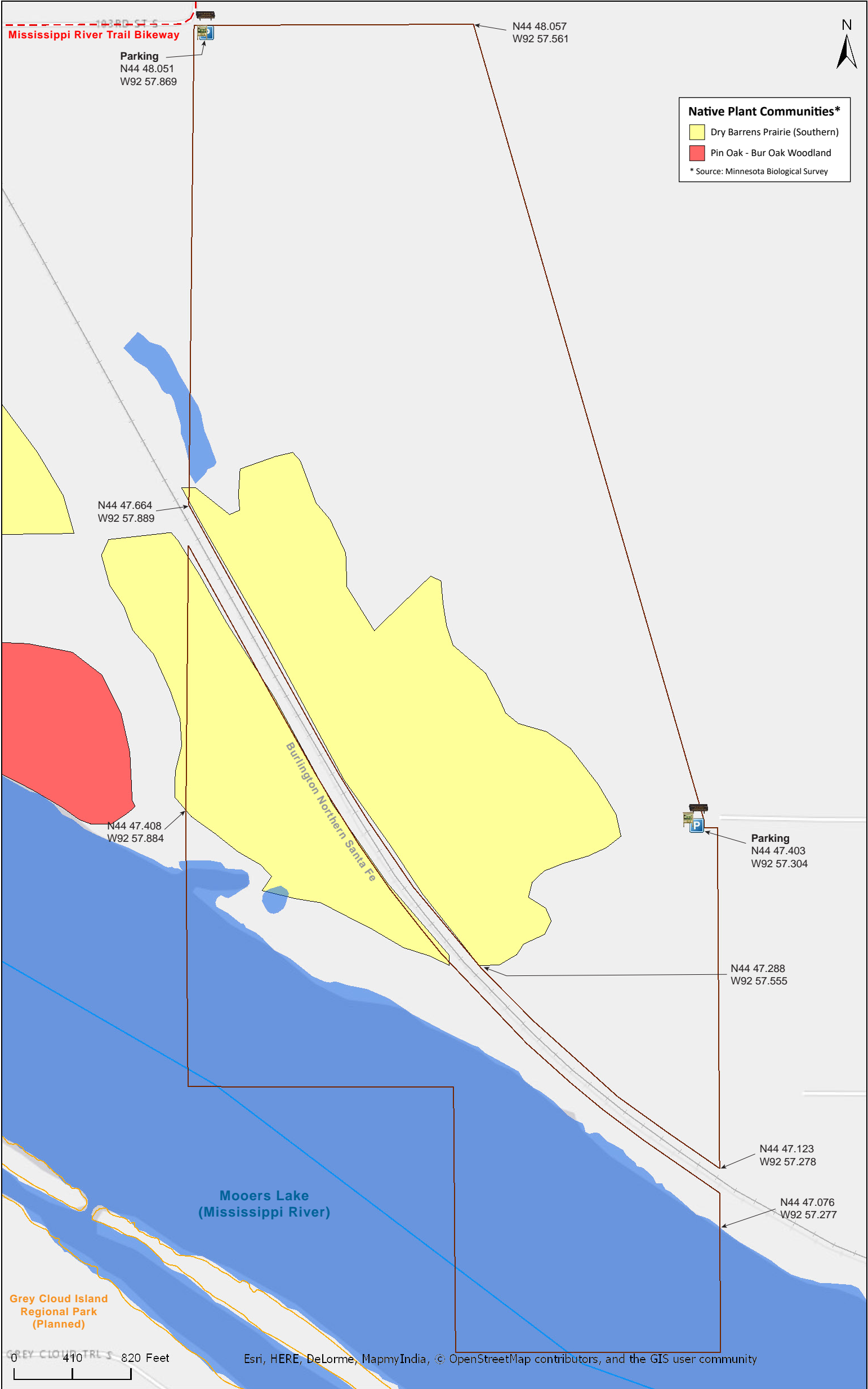
Grey Cloud Dunes SNA

Washington County



Grey Cloud Dunes SNA

Washington County





Grey Cloud Dunes SNA

Directions and Notes from Minnesota DNR

North Parking

Directions: In Cottage Grove, from US Hwy 61 0.75 mile S on Jamaica Ave, then 1.4 miles W on 100th St, then 0.25 mile S on Hadley Ave. Park in lot on E. Hike E then S on field road into prairie area of site..

Lat/Lon: 44.800842, -92.964485

South Parking

Directions: In Cottage Grove, from US Hwy 61 0.75 mile S on Jamaica Ave, then 0.4 mile W on 100th St, then 1 mile S on Ideal Ave, then 0.5 mile W on 110th St. Park in lot at dead end.

Lat/Lon: 44.790046, -92.955076

This site has no maintained trails or other recreational facilities. The Mississippi River Water Trail is adjacent to this site. This site is in an Audubon Important Bird Area.

Notes from MinnesotaSeasons.com

Parking

North Parking Lot
N44 48.051, W92 57.869

South Parking Lot
N44 47.403, W92 57.304

Hiking Trails

From the north parking area a somewhat maintained trail leads south through a heavily wooded section at the northeast boundary to the south end of a small lake. Continuing south, it passes through a tunnel beneath the railroad tracks and emerges in the south section of the SNA. From there, it continues south, more or less paralleling the railroad tracks, and ends at Mooers Lake, a widening of the Mississippi River.

There are several other trails, really well worn footpaths, on this site, indicating that this metro SNA is often used by the public.

Railroad Prairie

A busy section of the Burlington Northern and Santa Fe Railway separates the north and south sections of the SNA. A tunnel beneath the tracks at the west boundary

DISCLAIMER OF WARRANTIES AND LIMITATIONS OF LIABILITY

MinnesotaSeasons.com, The Nature Conservancy, U.S. Department of Agriculture, Forest Service, U.S. Fish and Wildlife Service, the state of Minnesota, the Minnesota Department of Natural Resources, and their employees, make no representations or warranties, express or implied, with respect to the use of or reliance on the data provided herewith, regardless of its format or means of transmission. There are no guarantees or representations to the user as to the accuracy, currency, completeness, suitability or reliability of this data for any purpose. THE USER ACCEPTS THE DATA AND/OR SOFTWARE "AS IS" AND ASSUMES ALL RISKS ASSOCIATED WITH ITS USE.

IN NO EVENT SHALL MINNESOTASEASONS.COM, TNC, USDA-FS, USFWS, OR MNDNR BE LIABLE FOR ANY DIRECT, INDIRECT, INCIDENTAL, SPECIAL, EXEMPLARY, OR CONSEQUENTIAL DAMAGES (INCLUDING, BUT NOT LIMITED TO, PROCUREMENT OF SUBSTITUTE GOODS OR SERVICES; LOSS OF USE, DATA, OR PROFITS; OR BUSINESS INTERRUPTION) HOWEVER CAUSED AND ON ANY THEORY OF LIABILITY, WHETHER IN CONTRACT, STRICT LIABILITY, OR TORT (INCLUDING NEGLIGENCE OR OTHERS) ARISING IN ANY WAY OUT OF THE USE OF THIS DATA, EVEN IF ADVISED OF THE POSSIBILITY OF SUCH DAMAGE OR FOR ANY CLAIM BY ANY OTHER PARTY.

Your use of the data is acceptance on your part of the terms and conditions set forth herein.