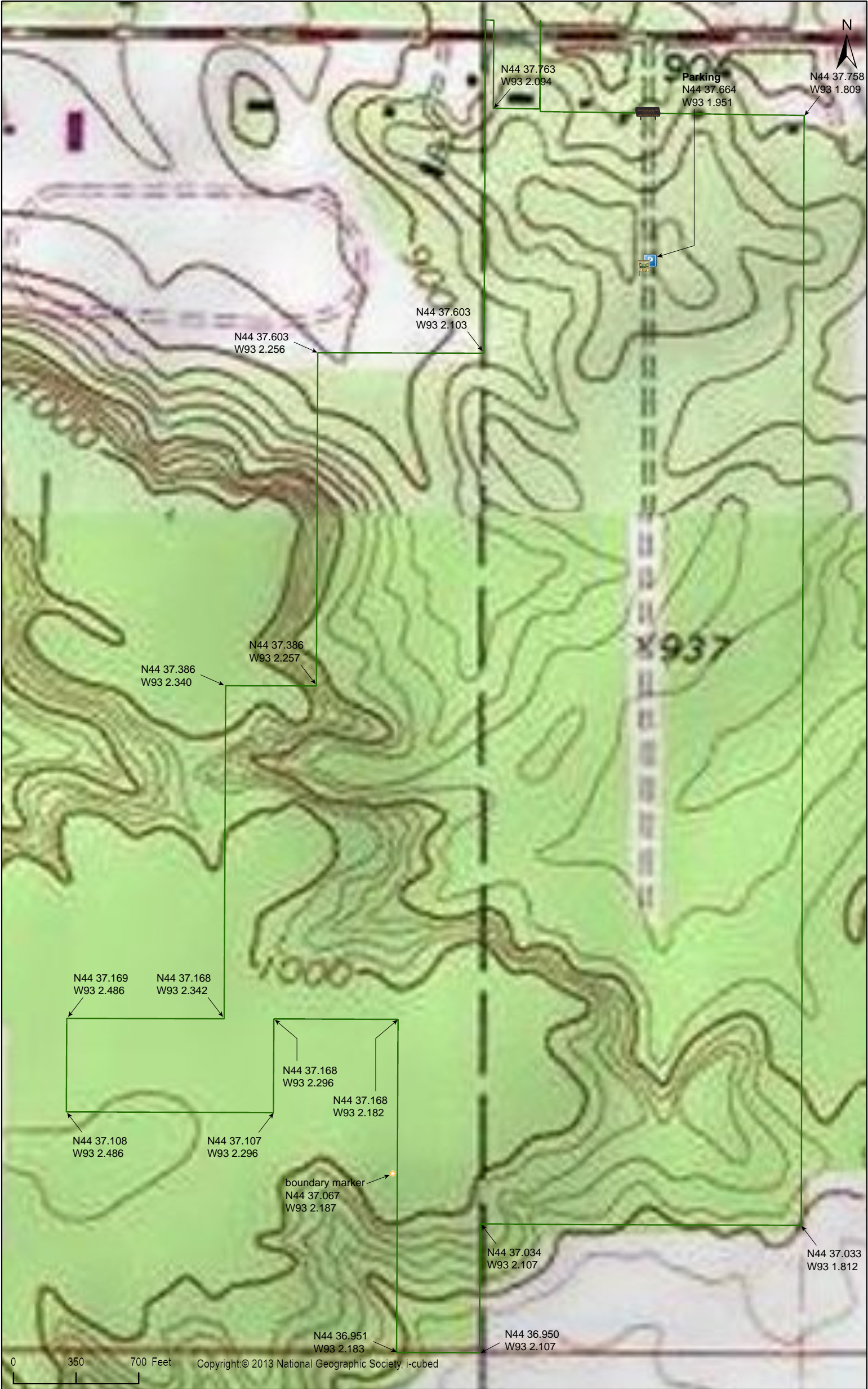


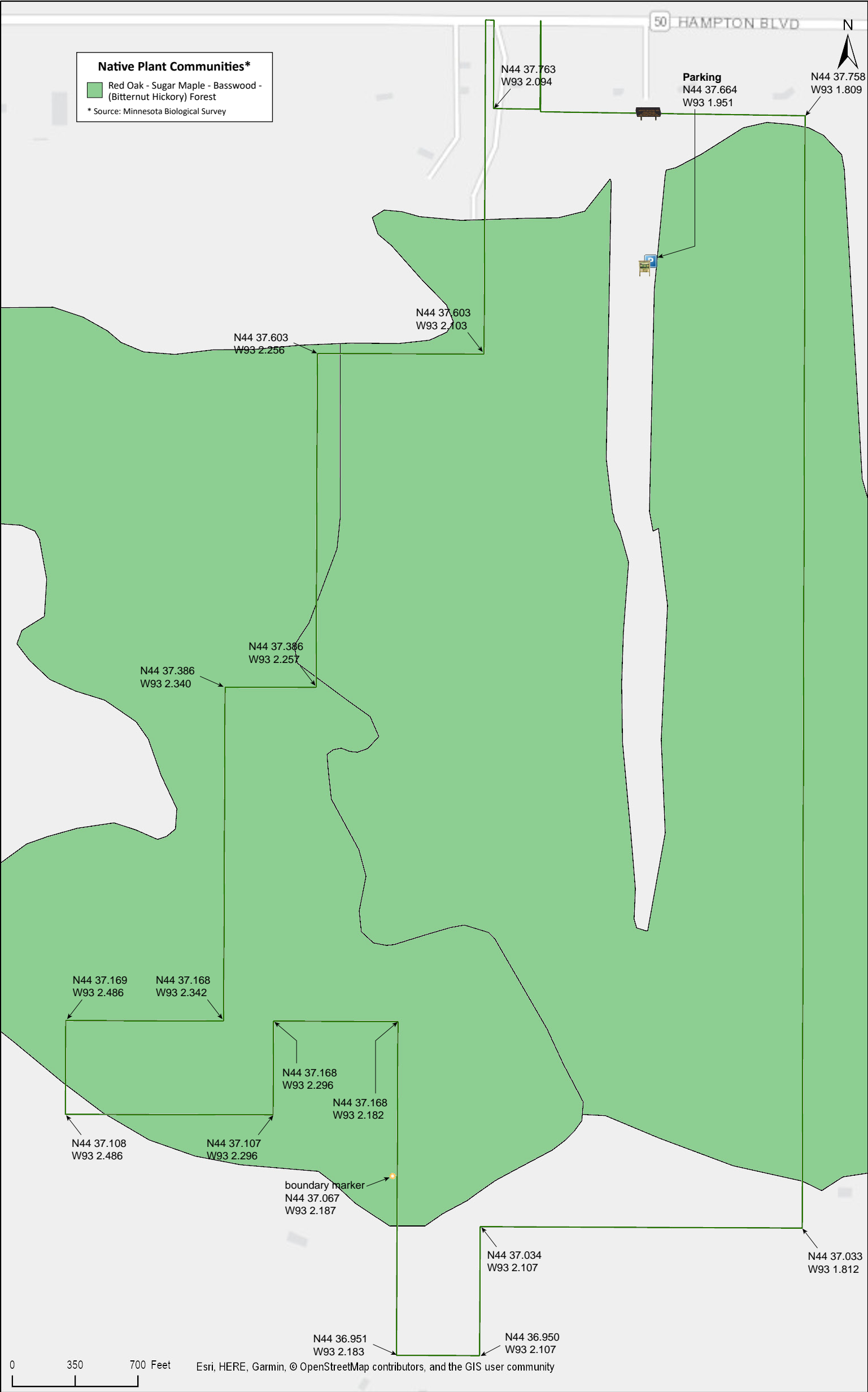
Source: Esri, DigitalGlobe, GeoEye, Earthstar Geographics, CNES/Airbus DS, USDA, USGS, AeroGRID, IGN, and the GIS User Community

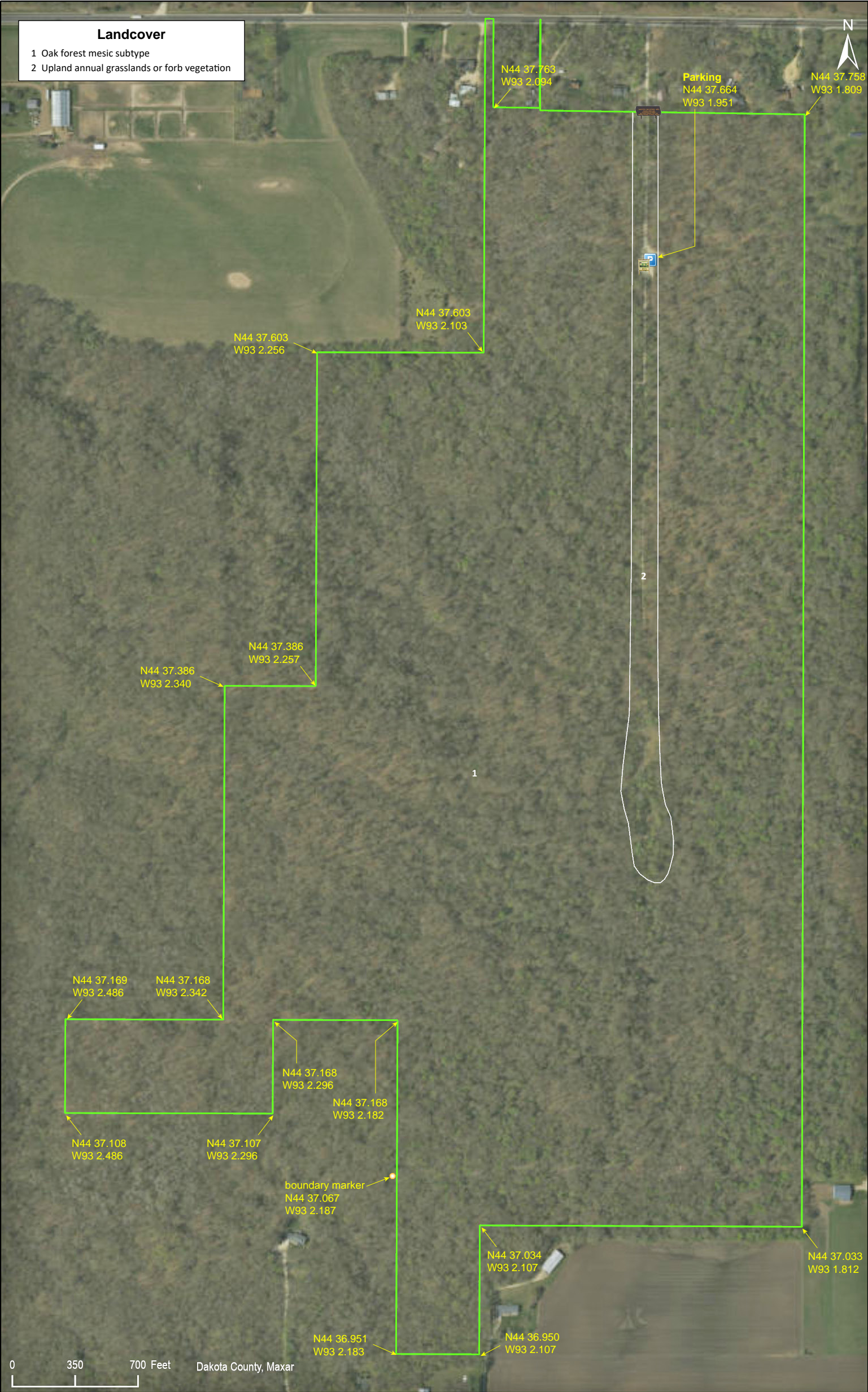
Hampton Woods WMA

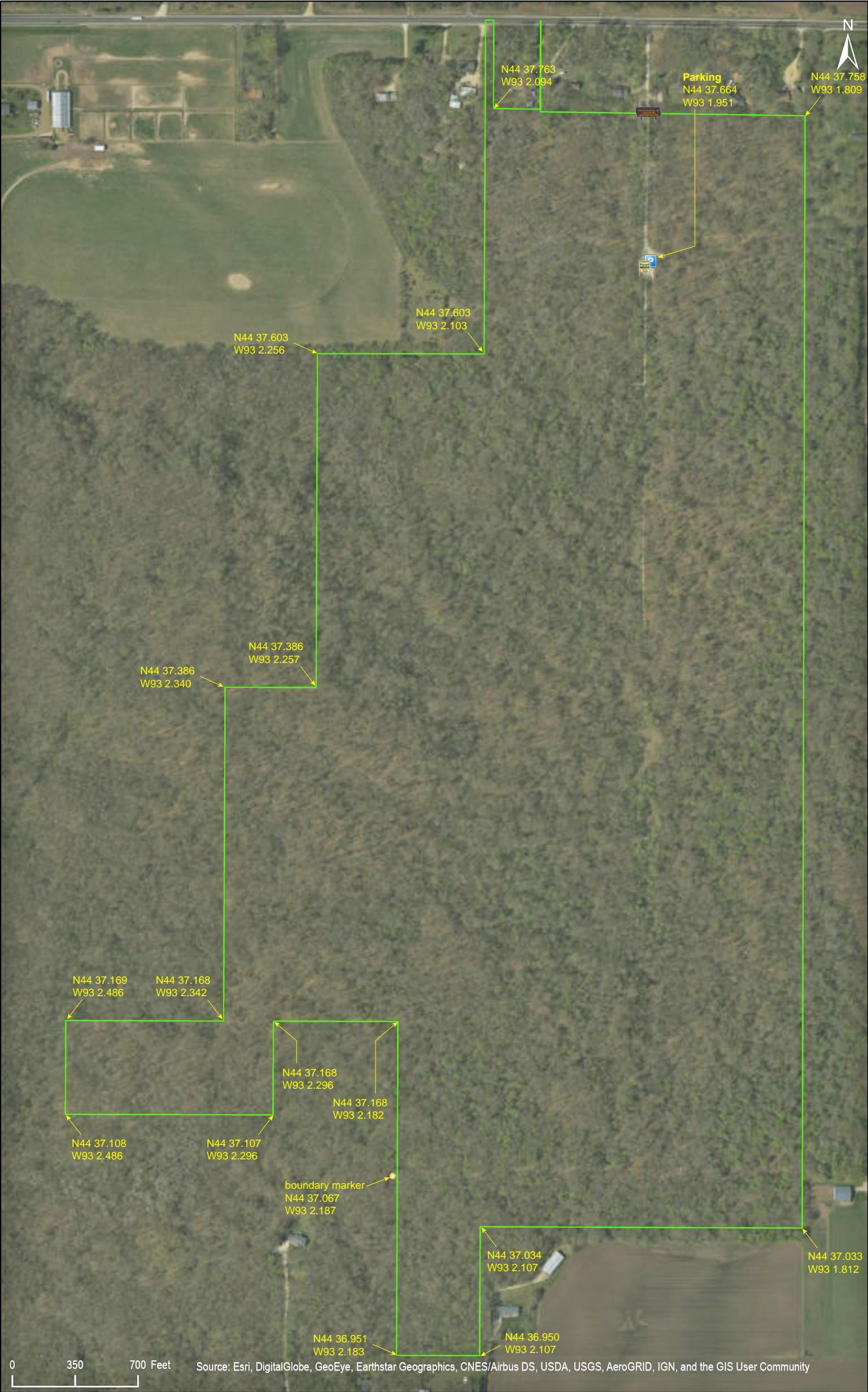
Dakota County











Hampton Woods WMA

Directions and Notes from Minnesota DNR

Directions

From the junction of Highway 52 and County Highway 50, travel 3.1 miles west/northwest on Hwy 50, take a left (south) on Collier Court and travel 0.1 miles to parking area/trail head.

Access to this WMA is Collier Ct. off of Co. Rd. 50. Collier Ct. is a legal easement through neighboring landowners on both sides of the road. Please be respectful of landowner's property. No parking other than in the designated parking slots may occur.

Visitor Alert

Be aware that we have increased surveillance and law enforcement presence at this WMA. Protect your future use of this public land by reporting violators and obeying laws. Please do your part to take care of Hampton Woods WMA. Remain aware of your location in order to avoid trespassing on private property. The boundary is posted with signs and a swath of vegetation has been cleared. Be aware of the "No Hunting or Trapping" zones. Park only in the eight designated parking spaces. If parking spaces are full, you must leave and come back at another time. Do not park along the entryway drive or the road. Carry out all trash (including toilet paper). A detailed visitor map is posted in the parking area and also available for download here from the menu on the left.

Notes from MinnesotaSeasons.com

Parking

There is a parking lot with designated spots for eight vehicles. Do not park along the entryway drive or on the road.
N44 37.664, W93 1.953

Hiking Trails

There are a few old forest roads in the site. A six-foot corridor has been cleared of trees and shrubs just inside the entire boundary of the WMA.

DISCLAIMER OF WARRANTIES AND LIMITATIONS OF LIABILITY

MinnesotaSeasons.com, The Nature Conservancy, U.S. Department of Agriculture, Forest Service, U.S. Fish and Wildlife Service, the state of Minnesota, the Minnesota Department of Natural Resources, and their employees, make no representations or warranties, express or implied, with respect to the use of or reliance on the data provided herewith, regardless of its format or means of transmission. There are no guarantees or representations to the user as to the accuracy, currency, completeness, suitability or reliability of this data for any purpose. THE USER ACCEPTS THE DATA AND/OR SOFTWARE "AS IS" AND ASSUMES ALL RISKS ASSOCIATED WITH ITS USE.

IN NO EVENT SHALL MINNESOTASEASONS.COM, TNC, USDA-FS, USFWS, OR MNDNR BE LIABLE FOR ANY DIRECT, INDIRECT, INCIDENTAL, SPECIAL, EXEMPLARY, OR CONSEQUENTIAL DAMAGES (INCLUDING, BUT NOT LIMITED TO, PROCUREMENT OF SUBSTITUTE GOODS OR SERVICES; LOSS OF USE, DATA, OR PROFITS; OR BUSINESS INTERRUPTION) HOWEVER CAUSED AND ON ANY THEORY OF LIABILITY, WHETHER IN CONTRACT, STRICT LIABILITY, OR TORT (INCLUDING NEGLIGENCE OR OTHERS) ARISING IN ANY WAY OUT OF THE USE OF THIS DATA, EVEN IF ADVISED OF THE POSSIBILITY OF SUCH DAMAGE OR FOR ANY CLAIM BY ANY OTHER PARTY.

Your use of the data is acceptance on your part of the terms and conditions set forth herein.