

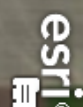
Hastings Sand Coulee SNA

Dakota County



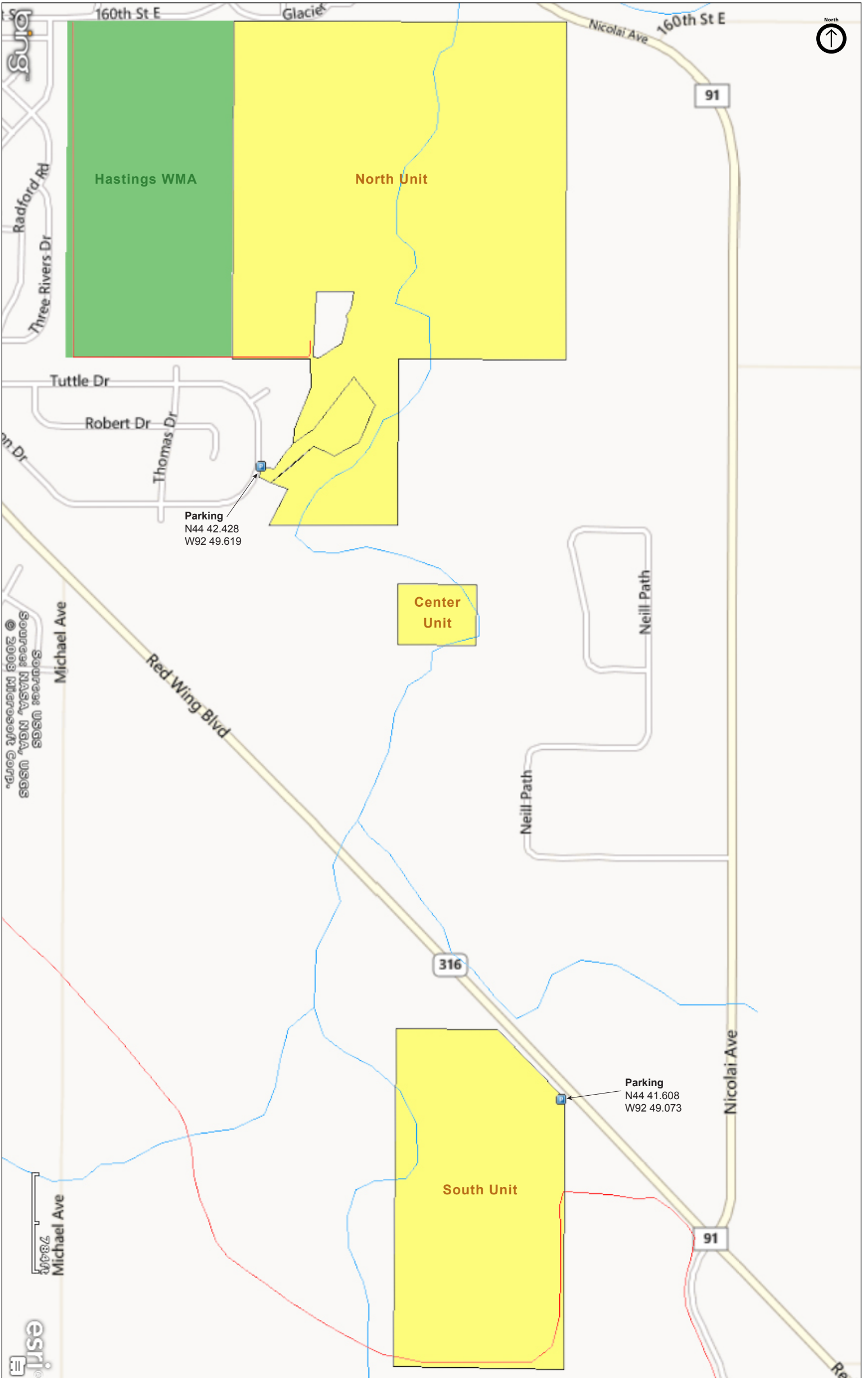
Source: Esri, DigitalGlobe, GeoEye, i-cubed, USDA, USGS, AEX, Getmapping, Aerogrid, IGN, IGP, and the GIS User Community

Source: USGS
Source: NASA, NGA, USGS



Hastings Sand Coulee SNA

Dakota County



Hastings Sand Coulee SNA

Directions and Notes from Minnesota DNR

1) From Hastings 1 mile SE on MN Hwy 316, then 0.6 mile E and S on Tuttle Dr. Park at stormwater utility and hike maintenance road NE into site.

2) From Hastings 2.4 miles SE on MN Hwy 316. Park in lot on SW, just past guard rail.

A maintained snowmobile trail passes through site.

The scenic slopes and ravines of the coulee are very vulnerable to erosion. Please take care to avoid damage to the slopes when visiting the area.

Hastings WMA is adjacent to this site.

Notes from MinnesotaSeasons.com

Parking

North Unit (Stormwater Utility)
N44 42.428, W92 49.619

South Unit Parking Lot (MN Hwy 316)
N44 41.608, W92 49.073

This SNA is made up of three disconnected units. The center unit is an abandoned gravel pit.

Hiking Trails

There are no maintained hiking trails. A maintained snowmobile trail, Dakota County Trails Snowmobile Trail 123, passes through the south unit.

DISCLAIMER OF WARRANTIES AND LIMITATIONS OF LIABILITY

MinnesotaSeasons.com, The Nature Conservancy, U.S. Department of Agriculture, Forest Service, U.S. Fish and Wildlife Service, the state of Minnesota, the Minnesota Department of Natural Resources, and their employees, make no representations or warranties, express or implied, with respect to the use of or reliance on the data provided herewith, regardless of its format or means of transmission. There are no guarantees or representations to the user as to the accuracy, currency, completeness, suitability or reliability of this data for any purpose. THE USER ACCEPTS THE DATA AND/OR SOFTWARE "AS IS" AND ASSUMES ALL RISKS ASSOCIATED WITH ITS USE.

IN NO EVENT SHALL MINNESOTASEASONS.COM, TNC, USDA-FS, USFWS, OR MNDNR BE LIABLE FOR ANY DIRECT, INDIRECT, INCIDENTAL, SPECIAL, EXEMPLARY, OR CONSEQUENTIAL DAMAGES (INCLUDING, BUT NOT LIMITED TO, PROCUREMENT OF SUBSTITUTE GOODS OR SERVICES; LOSS OF USE, DATA, OR PROFITS; OR BUSINESS INTERRUPTION) HOWEVER CAUSED AND ON ANY THEORY OF LIABILITY, WHETHER IN CONTRACT, STRICT LIABILITY, OR TORT (INCLUDING NEGLIGENCE OR OTHERS) ARISING IN ANY WAY OUT OF THE USE OF THIS DATA, EVEN IF ADVISED OF THE POSSIBILITY OF SUCH DAMAGE OR FOR ANY CLAIM BY ANY OTHER PARTY.

Your use of the data is acceptance on your part of the terms and conditions set forth herein.