

Helen Allison Savanna SNA

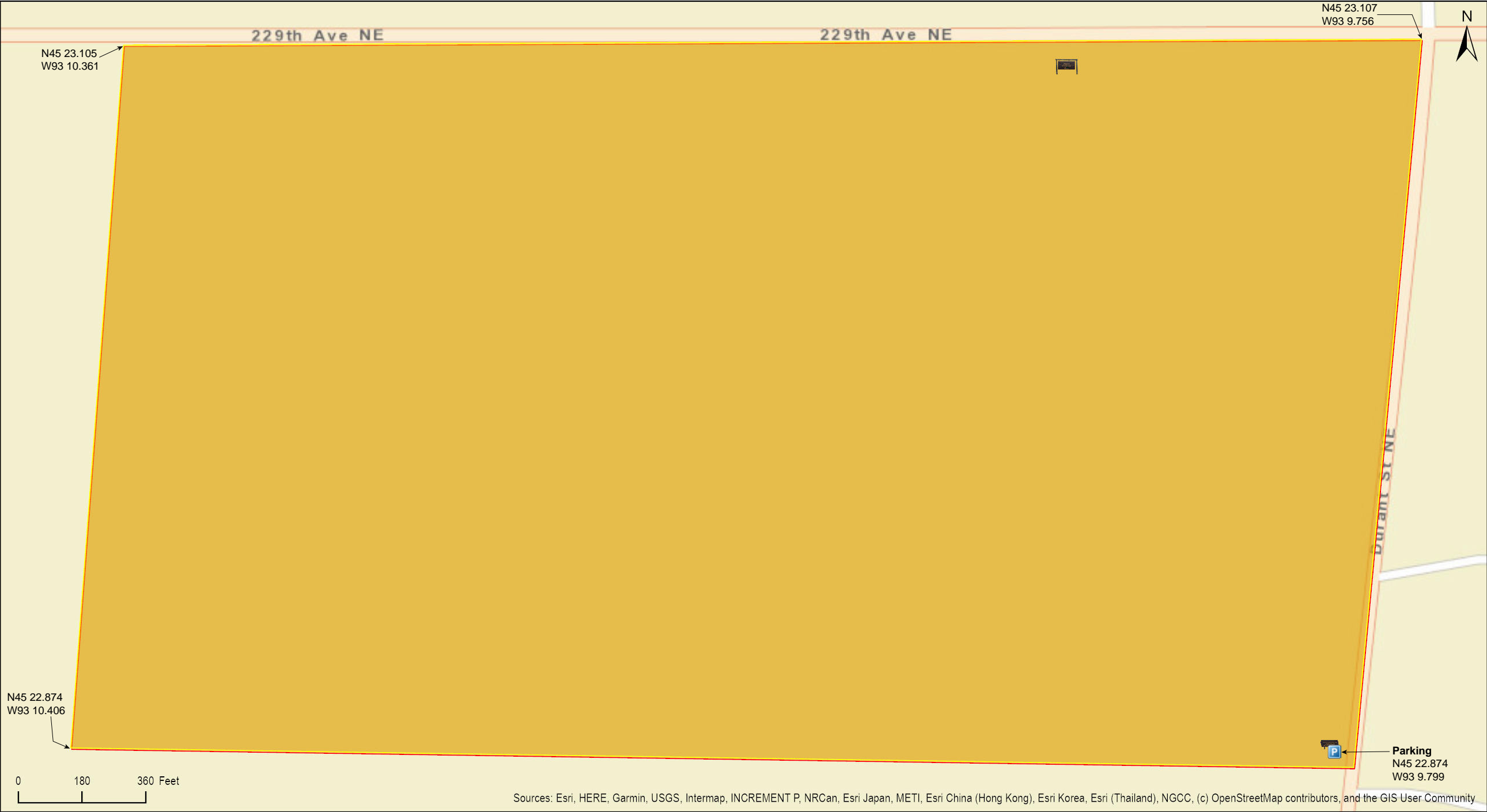
Anoka County





Helen Allison Savanna SNA

Anoka County



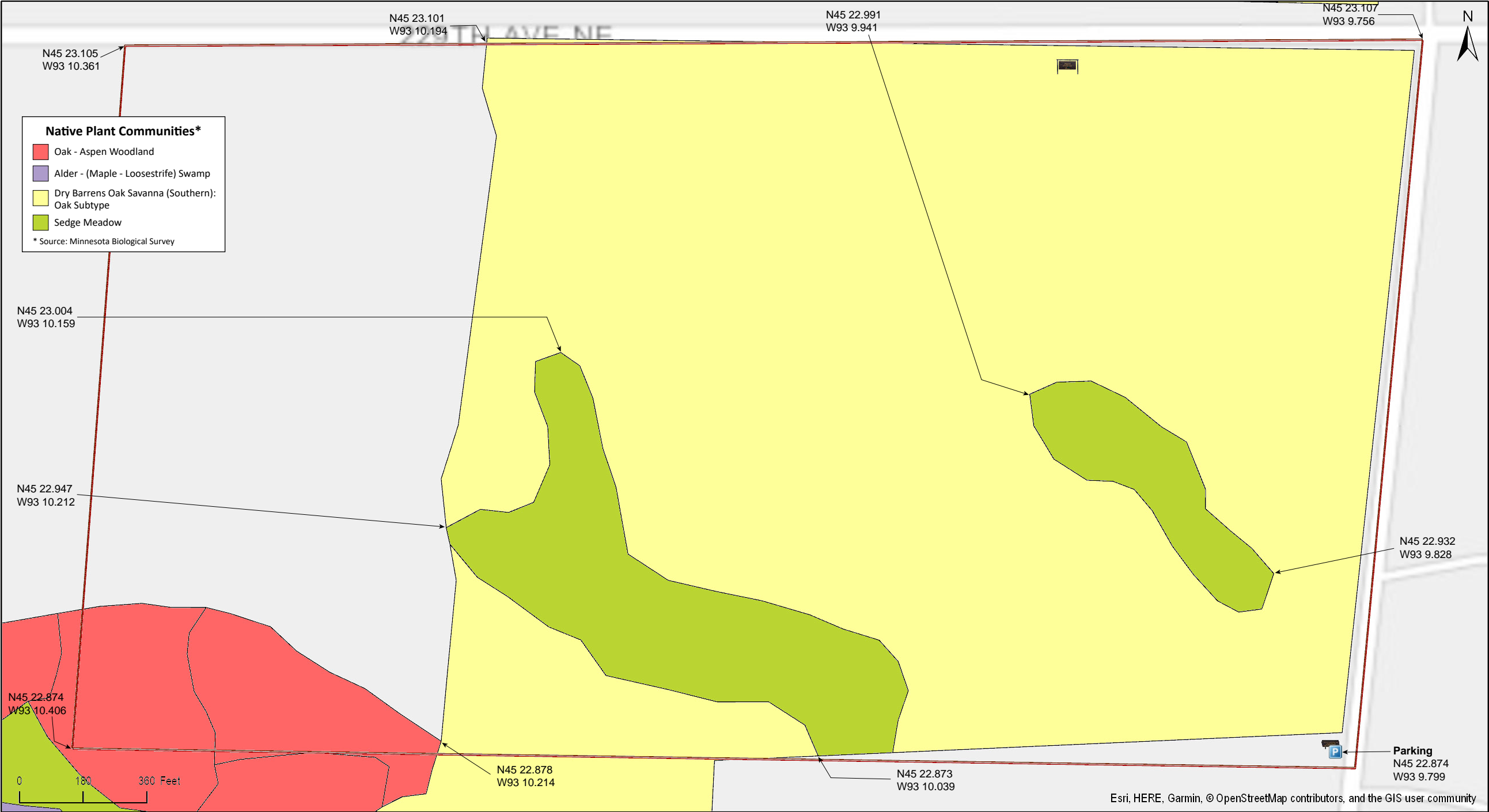
Helen Allison Savanna SNA

Anoka County



# Helen Allison Savanna SNA

Anoka County









# Helen Allison Savanna SNA

## Directions and Notes from Minnesota DNR

**Directions:** From MN Hwy 65 in Bethel 1 mile E on Co Hwy 24 (237th Ave N), then 3.5 miles S and E on Co Hwy 26 (229th Ave N), then 0.25 mile S on Co Rd 15. Park in pull-off on W.

**Lat/Lon:** 45.381235, -93.163319

This site has no maintained trails or other recreational facilities.

## Directions and Notes from The Nature Conservancy

From the Twin Cities:

- Travel north on State Highway 65, 35 miles to County Highway 24.
- Turn east and travel 1 mile to County Highway 26.
- Go east on 26, 3.5 miles to County Road 15.
- Turn south and drive .25 mile. The preserve lies on the west side of the road. Nearest services are in Bethel.

## Notes from MinnesotaSeasons.com

### **Parking**

N45 22.874, W93 9.799

### **Trails**

An old access road clear of trees and shrubs leads west from the parking area, along the south boundary of the SNA, to the prairie on the western quarter of the site.

This SNA is adjacent to the Cedar Creek Natural History Area.

## DISCLAIMER OF WARRANTIES AND LIMITATIONS OF LIABILITY

MinnesotaSeasons.com, The Nature Conservancy, U.S. Department of Agriculture, Forest Service, U.S. Fish and Wildlife Service, the state of Minnesota, the Minnesota Department of Natural Resources, and their employees, make no representations or warranties, express or implied, with respect to the use of or reliance on the data provided herewith, regardless of its format or means of transmission. There are no guarantees or representations to the user as to the accuracy, currency, completeness, suitability or reliability of this data for any purpose. THE USER ACCEPTS THE DATA AND/OR SOFTWARE "AS IS" AND ASSUMES ALL RISKS ASSOCIATED WITH ITS USE.

IN NO EVENT SHALL MINNESOTASEASONS.COM, TNC, USDA-FS, USFWS, OR MNDNR BE LIABLE FOR ANY DIRECT, INDIRECT, INCIDENTAL, SPECIAL, EXEMPLARY, OR CONSEQUENTIAL DAMAGES (INCLUDING, BUT NOT LIMITED TO, PROCUREMENT OF SUBSTITUTE GOODS OR SERVICES; LOSS OF USE, DATA, OR PROFITS; OR BUSINESS INTERRUPTION) HOWEVER CAUSED AND ON ANY THEORY OF LIABILITY, WHETHER IN CONTRACT, STRICT LIABILITY, OR TORT (INCLUDING NEGLIGENCE OR OTHERS) ARISING IN ANY WAY OUT OF THE USE OF THIS DATA, EVEN IF ADVISED OF THE POSSIBILITY OF SUCH DAMAGE OR FOR ANY CLAIM BY ANY OTHER PARTY.

Your use of the data is acceptance on your part of the terms and conditions set forth herein.