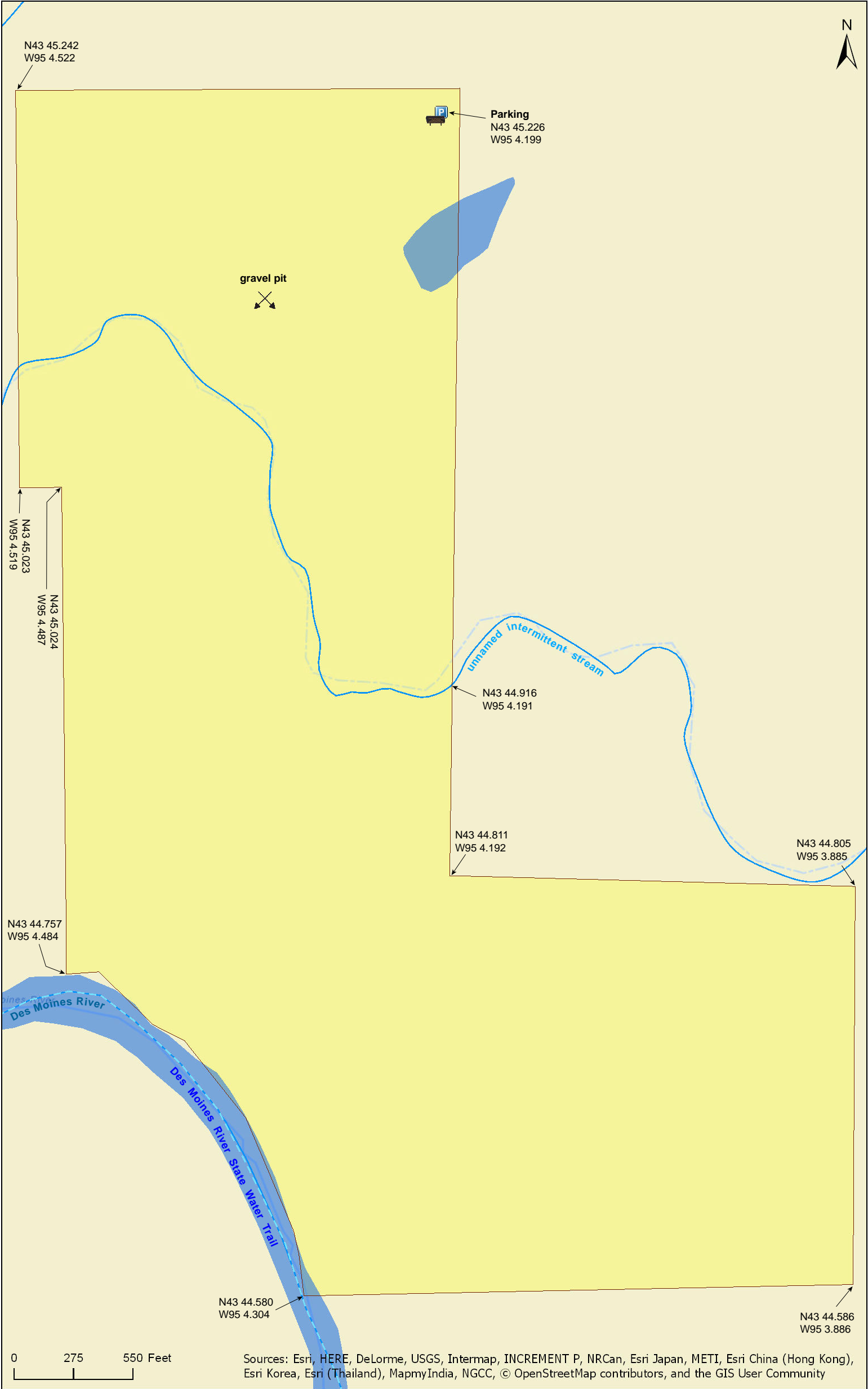
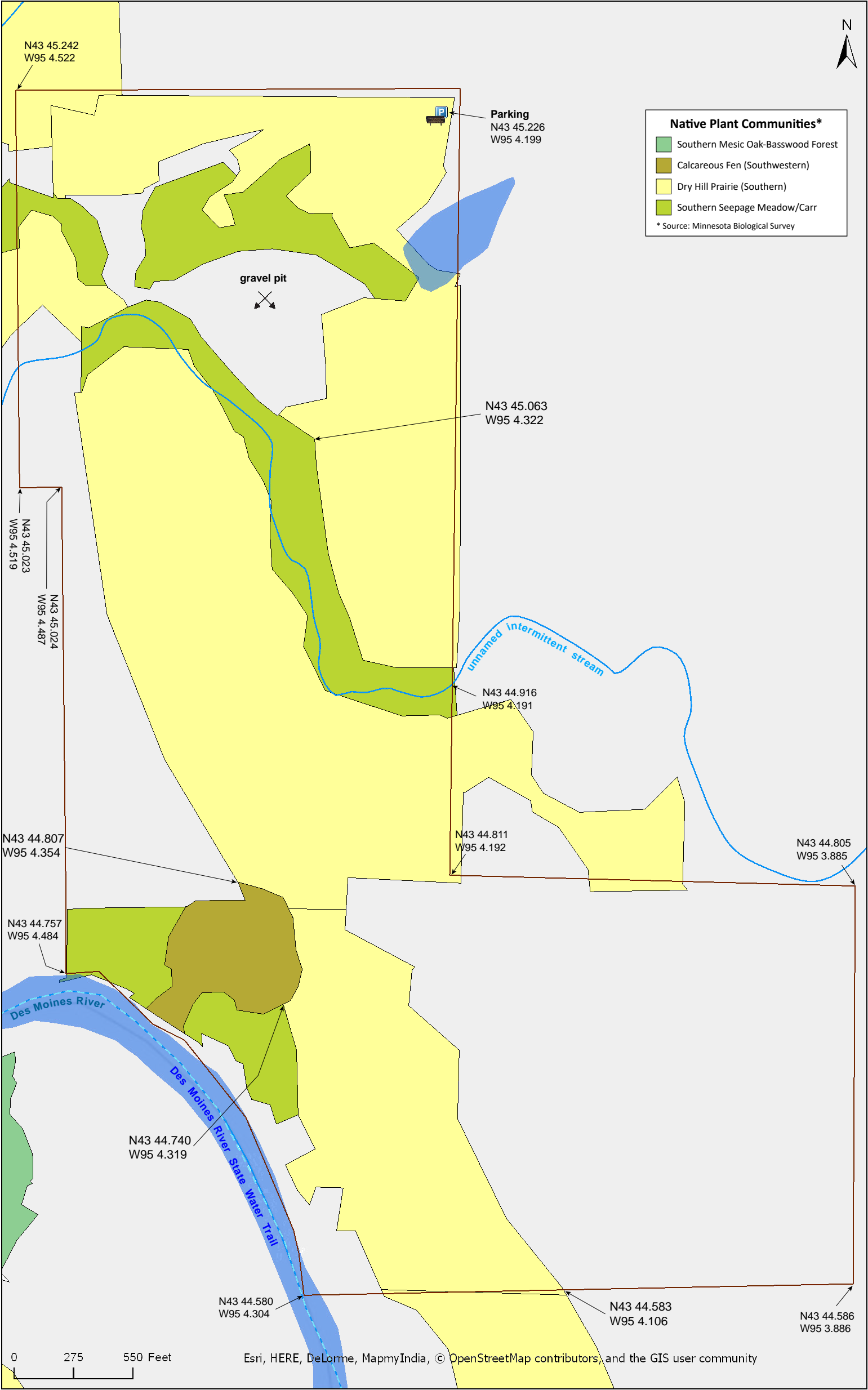


Holthe Prairie SNA

Jackson County









Holthe Prairie SNA

Directions and Notes from Minnesota DNR

Directions: From Windom 4.5 miles SE on US Hwy 71, then 4.5 miles S on gravel road (becomes Co Rd 19), then W 0.75 mile on minimum maintenance road. Park in lot on S.

Lat/Lon: 43.753767, -95.069987

This site has no maintained trails or other recreational facilities.

Notes from MinnesotaSeasons.com

Getting There

An unmarked, minimum-maintenance road leads west ¾ mile from County Road 19 (510th Ave.) to this site. In the spring this road may be washed out in spots—be prepared to walk unless you have a vehicle with high clearance and four-wheel drive. In the summer the road is passable. Navigation software and devices do not include this road.

Parking

Access Road
N43 45.235, W95 3.291

Parking Lot
N43 45.226, W95 4.199

There is a small parking lot near the gate that blocks the access road.

Hiking Trails

The access road continues beyond a gate at the parking area to gravel pits beyond the western edge of the SNA.

Black Flies

In the spring bring a headnet or a bandana to cover your nose and mouth. Black flies (gnats) can get thick here in late May, making breathing an adventure. The gnats are gone by July.

DISCLAIMER OF WARRANTIES AND LIMITATIONS OF LIABILITY

MinnesotaSeasons.com, The Nature Conservancy, U.S. Department of Agriculture, Forest Service, U.S. Fish and Wildlife Service, the state of Minnesota, the Minnesota Department of Natural Resources, and their employees, make no representations or warranties, express or implied, with respect to the use of or reliance on the data provided herewith, regardless of its format or means of transmission. There are no guarantees or representations to the user as to the accuracy, currency, completeness, suitability or reliability of this data for any purpose. THE USER ACCEPTS THE DATA AND/OR SOFTWARE "AS IS" AND ASSUMES ALL RISKS ASSOCIATED WITH ITS USE.

IN NO EVENT SHALL MINNESOTASEASONS.COM, TNC, USDA-FS, USFWS, OR MNDNR BE LIABLE FOR ANY DIRECT, INDIRECT, INCIDENTAL, SPECIAL, EXEMPLARY, OR CONSEQUENTIAL DAMAGES (INCLUDING, BUT NOT LIMITED TO, PROCUREMENT OF SUBSTITUTE GOODS OR SERVICES; LOSS OF USE, DATA, OR PROFITS; OR BUSINESS INTERRUPTION) HOWEVER CAUSED AND ON ANY THEORY OF LIABILITY, WHETHER IN CONTRACT, STRICT LIABILITY, OR TORT (INCLUDING NEGLIGENCE OR OTHERS) ARISING IN ANY WAY OUT OF THE USE OF THIS DATA, EVEN IF ADVISED OF THE POSSIBILITY OF SUCH DAMAGE OR FOR ANY CLAIM BY ANY OTHER PARTY.

Your use of the data is acceptance on your part of the terms and conditions set forth herein.