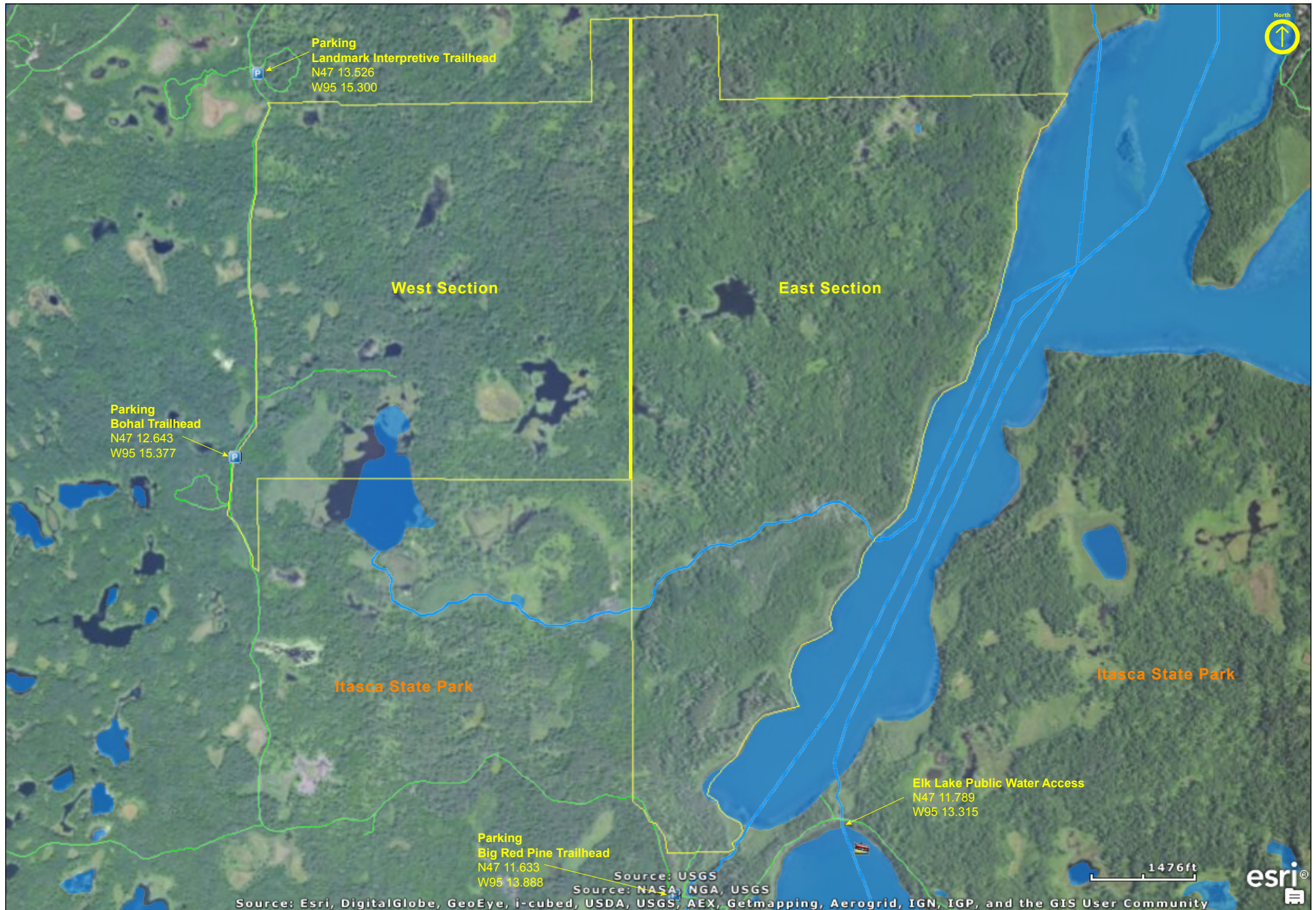


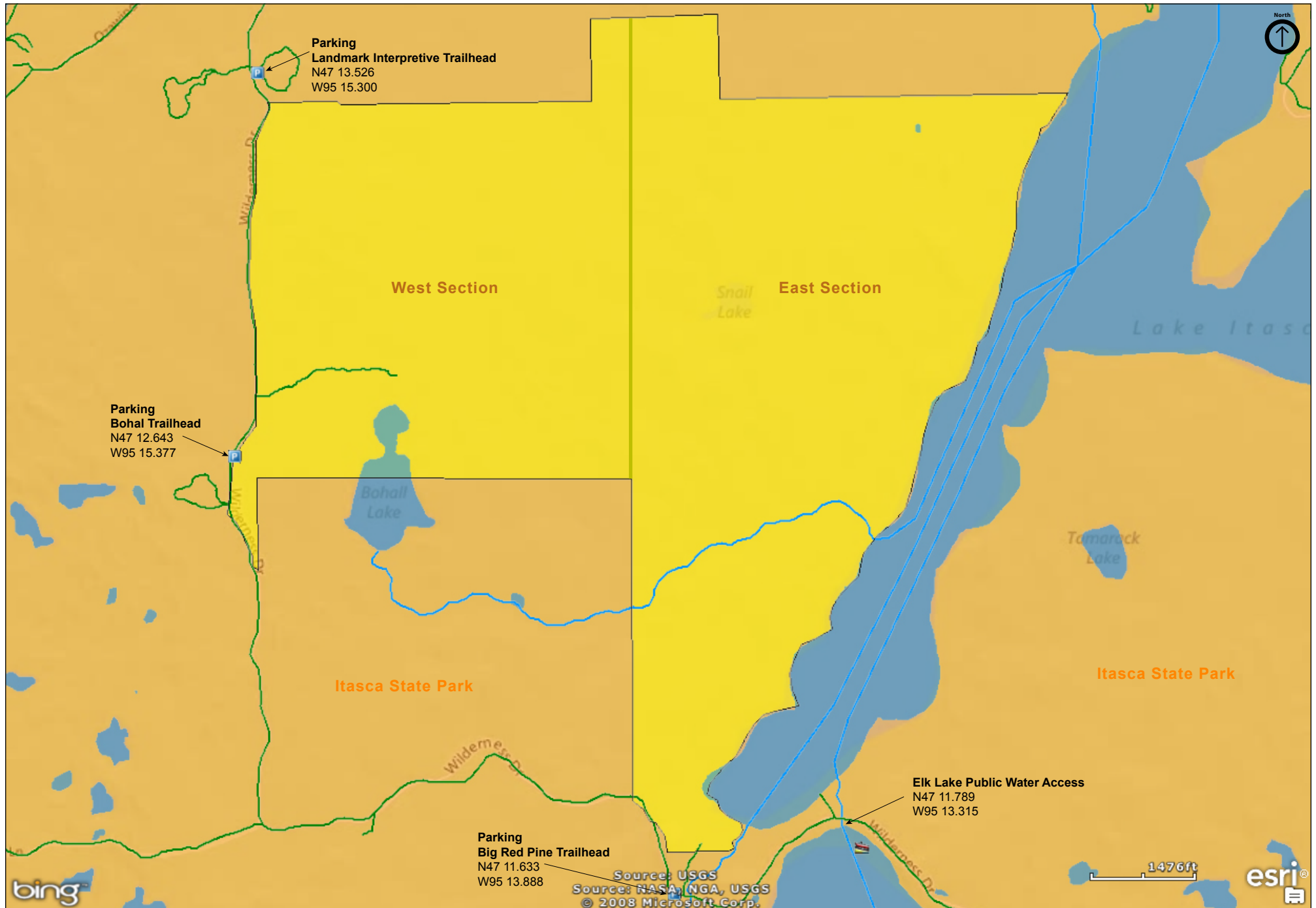
Itasca Wilderness Sanctuary SNA

Clearwater County



Itasca Wilderness Sanctuary SNA

Clearwater County



Itasca Wilderness Sanctuary SNA

Directions and Notes from Minnesota DNR

1) In Itasca State Park, 20 miles N of Park Rapids. Sanctuary can be accessed along Wilderness Drive. Park at Bohall Trailhead.

2) In Itasca State Park, 20 miles N of Park Rapids. Sanctuary can be accessed along Wilderness Drive. Park at Landmark Interpretive Trailhead.

3) In Itasca State Park, 20 miles N of Park Rapids. Sanctuary can be accessed along Wilderness Drive. Park at Big Red Pine Trailhead.

The Bohall Wilderness Trail passes through site.

Recreational facilities available in Itasca State Park.

Notes from MinnesotaSeasons.com

Parking

Landmark Interpretive Trailhead
N47 13.526, W95 15.300

Bohal Trailhead
N47 12.643, W95 15.377

Big Red Pine Trailhead
N47 11.633, W95 13.888

This SNA lies within the borders of Itasca State Park. A state park permit is required.

DISCLAIMER OF WARRANTIES AND LIMITATIONS OF LIABILITY

MinnesotaSeasons.com, The Nature Conservancy, U.S. Department of Agriculture, Forest Service, U.S. Fish and Wildlife Service, the state of Minnesota, the Minnesota Department of Natural Resources, and their employees, make no representations or warranties, express or implied, with respect to the use of or reliance on the data provided herewith, regardless of its format or means of transmission. There are no guarantees or representations to the user as to the accuracy, currency, completeness, suitability or reliability of this data for any purpose. THE USER ACCEPTS THE DATA AND/OR SOFTWARE "AS IS" AND ASSUMES ALL RISKS ASSOCIATED WITH ITS USE.

IN NO EVENT SHALL MINNESOTASEASONS.COM, TNC, USDA-FS, USFWS, OR MNDNR BE LIABLE FOR ANY DIRECT, INDIRECT, INCIDENTAL, SPECIAL, EXEMPLARY, OR CONSEQUENTIAL DAMAGES (INCLUDING, BUT NOT LIMITED TO, PROCUREMENT OF SUBSTITUTE GOODS OR SERVICES; LOSS OF USE, DATA, OR PROFITS; OR BUSINESS INTERRUPTION) HOWEVER CAUSED AND ON ANY THEORY OF LIABILITY, WHETHER IN CONTRACT, STRICT LIABILITY, OR TORT (INCLUDING NEGLIGENCE OR OTHERWISE) ARISING IN ANY WAY OUT OF THE USE OF THIS DATA, EVEN IF ADVISED OF THE POSSIBILITY OF SUCH DAMAGE OR FOR ANY CLAIM BY ANY OTHER PARTY.

Your use of the data is acceptance on your part of the terms and conditions set forth herein.