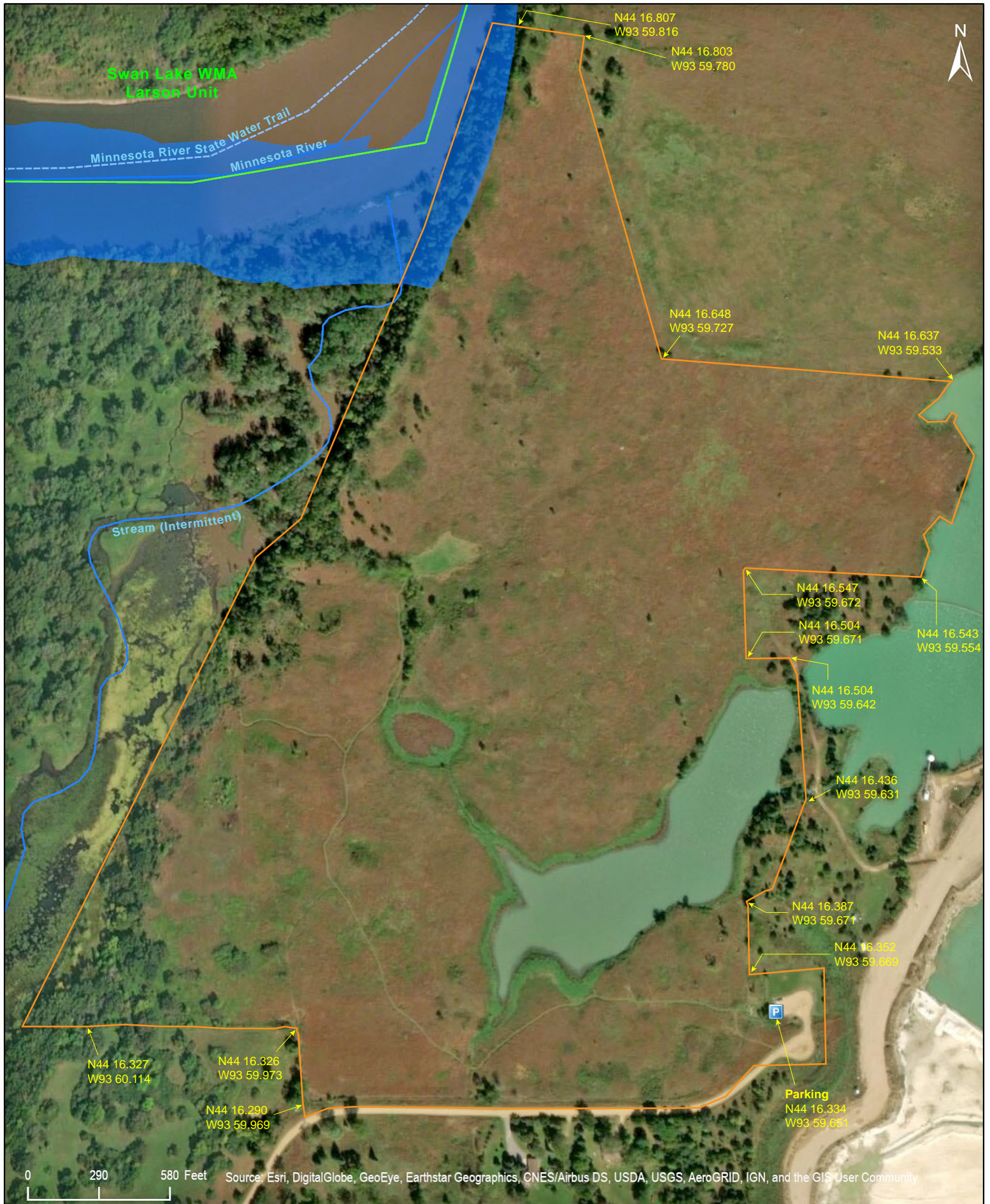


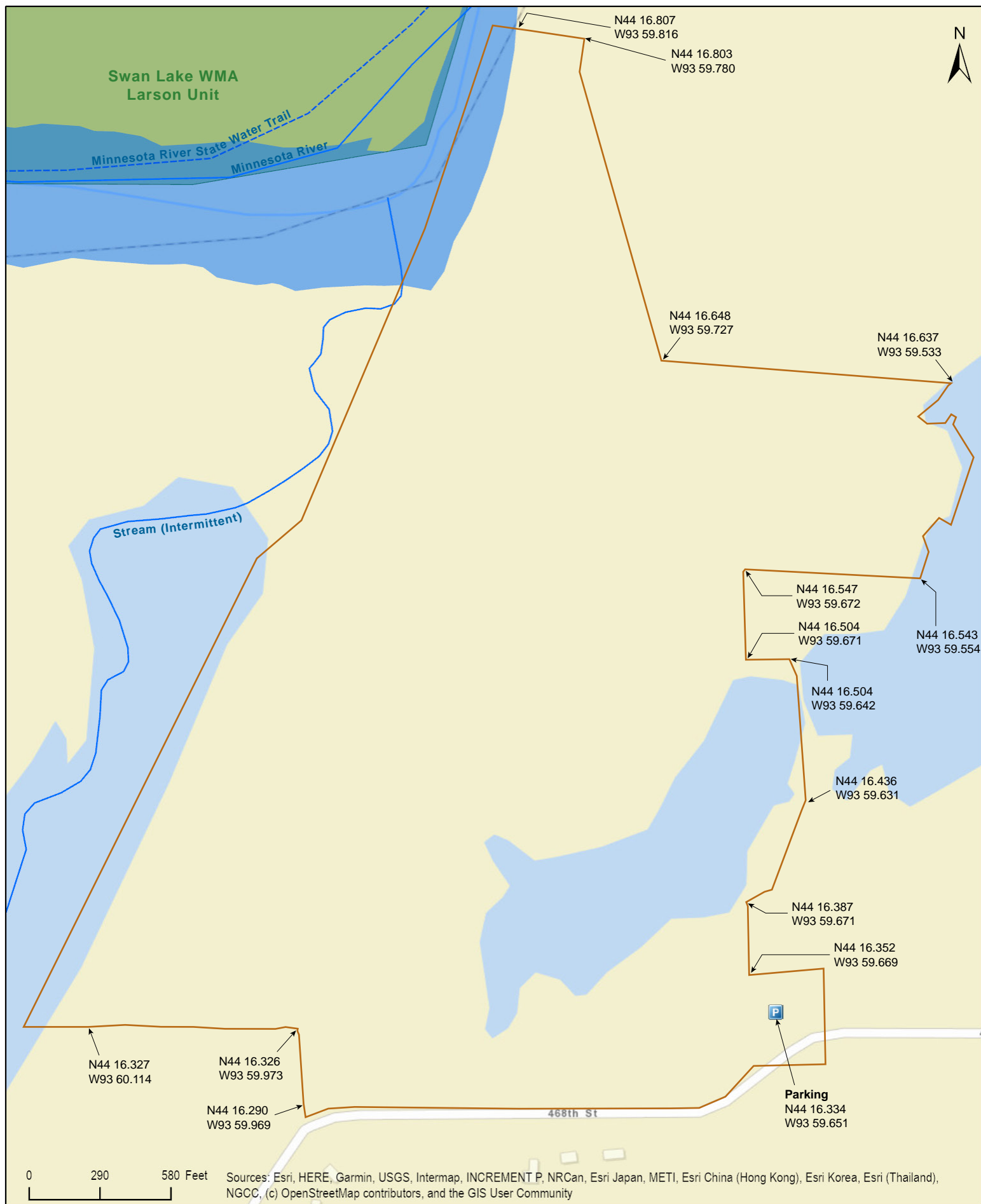
Kasota Prairie

Le Sueur County



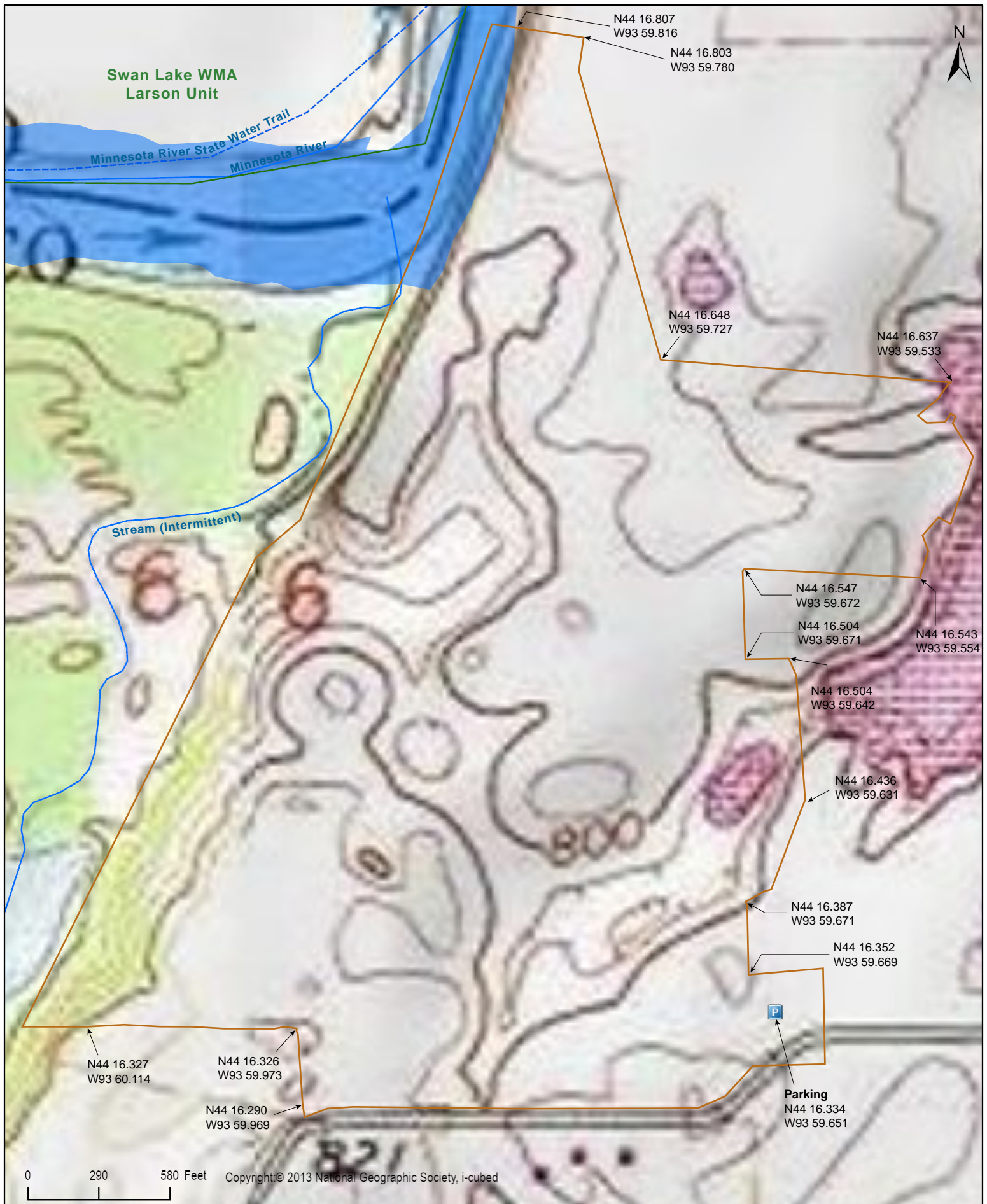
Kasota Prairie

Le Sueur County



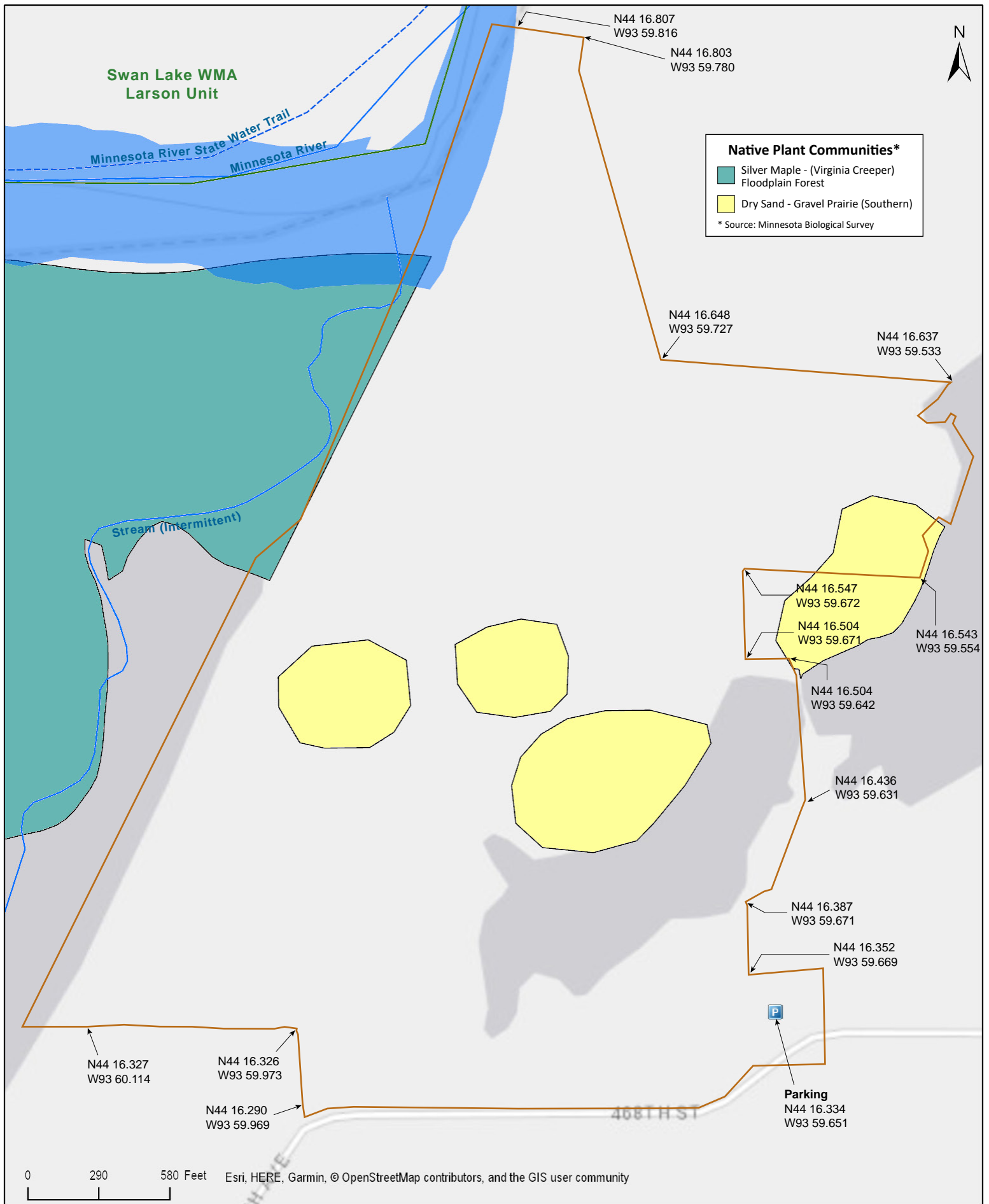
Kasota Prairie

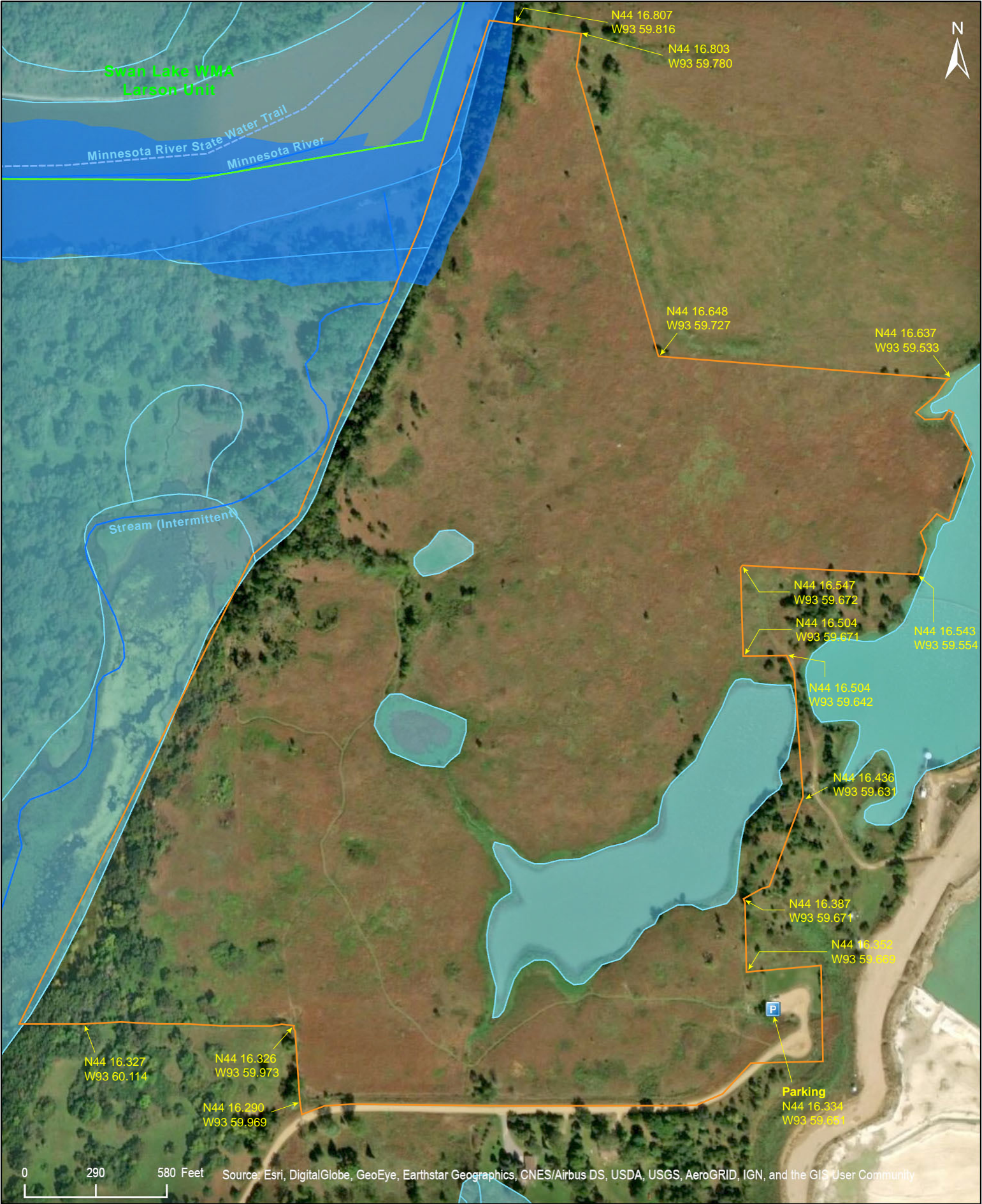
Le Sueur County



Kasota Prairie

Le Sueur County





Kasota Prairie

Directions and Notes from Save the Kasota Prairie Facebook page

36312 468th St
Kasota, Minnesota 56050

LOCATION

The Kasota Prairie is located one mile south of Kasota, Minnesota on Le Sueur County Road #21 and on mile west on #T140

DIRECTIONS

Go to the next road south - I think it's marked 360th St, but we have "Kasota Prairie" signage there, and on Hwy#22 at #101. Then, of course, you have to follow the bluff road - 267th Ave - back to the north a mile to the Parking Lot at the Prairie.

Notes from MinnesotaSeasons.com

Parking

There is a large gravel surface parking lot at the end of 468th St. N44 16.334, W93 59.651

Hiking Trails

A mowed trail begins at the parking lot. It leads west then north around a shallow lake, ending abruptly at an intermittent stream.

Boundary

There are no boundary markers. The western boundary is the Minnesota River or the base of the river bluff. Part of the eastern boundary is a pond. The remainder of the site is bounded by a barbed wire fence.

DISCLAIMER OF WARRANTIES AND LIMITATIONS OF LIABILITY

MinnesotaSeasons.com, The Nature Conservancy, U.S. Department of Agriculture, Forest Service, U.S. Fish and Wildlife Service, the state of Minnesota, the Minnesota Department of Natural Resources, and their employees, make no representations or warranties, express or implied, with respect to the use of or reliance on the data provided herewith, regardless of its format or means of transmission. There are no guarantees or representations to the user as to the accuracy, currency, completeness, suitability or reliability of this data for any purpose. THE USER ACCEPTS THE DATA AND/OR SOFTWARE "AS IS" AND ASSUMES ALL RISKS ASSOCIATED WITH ITS USE.

IN NO EVENT SHALL MINNESOTASEASONS.COM, TNC, USDA-FS, USFWS, OR MNDNR BE LIABLE FOR ANY DIRECT, INDIRECT, INCIDENTAL, SPECIAL, EXEMPLARY, OR CONSEQUENTIAL DAMAGES (INCLUDING, BUT NOT LIMITED TO, PROCUREMENT OF SUBSTITUTE GOODS OR SERVICES; LOSS OF USE, DATA, OR PROFITS; OR BUSINESS INTERRUPTION) HOWEVER CAUSED AND ON ANY THEORY OF LIABILITY, WHETHER IN CONTRACT, STRICT LIABILITY, OR TORT (INCLUDING NEGLIGENCE OR OTHERS) ARISING IN ANY WAY OUT OF THE USE OF THIS DATA, EVEN IF ADVISED OF THE POSSIBILITY OF SUCH DAMAGE OR FOR ANY CLAIM BY ANY OTHER PARTY.

Your use of the data is acceptance on your part of the terms and conditions set forth herein.