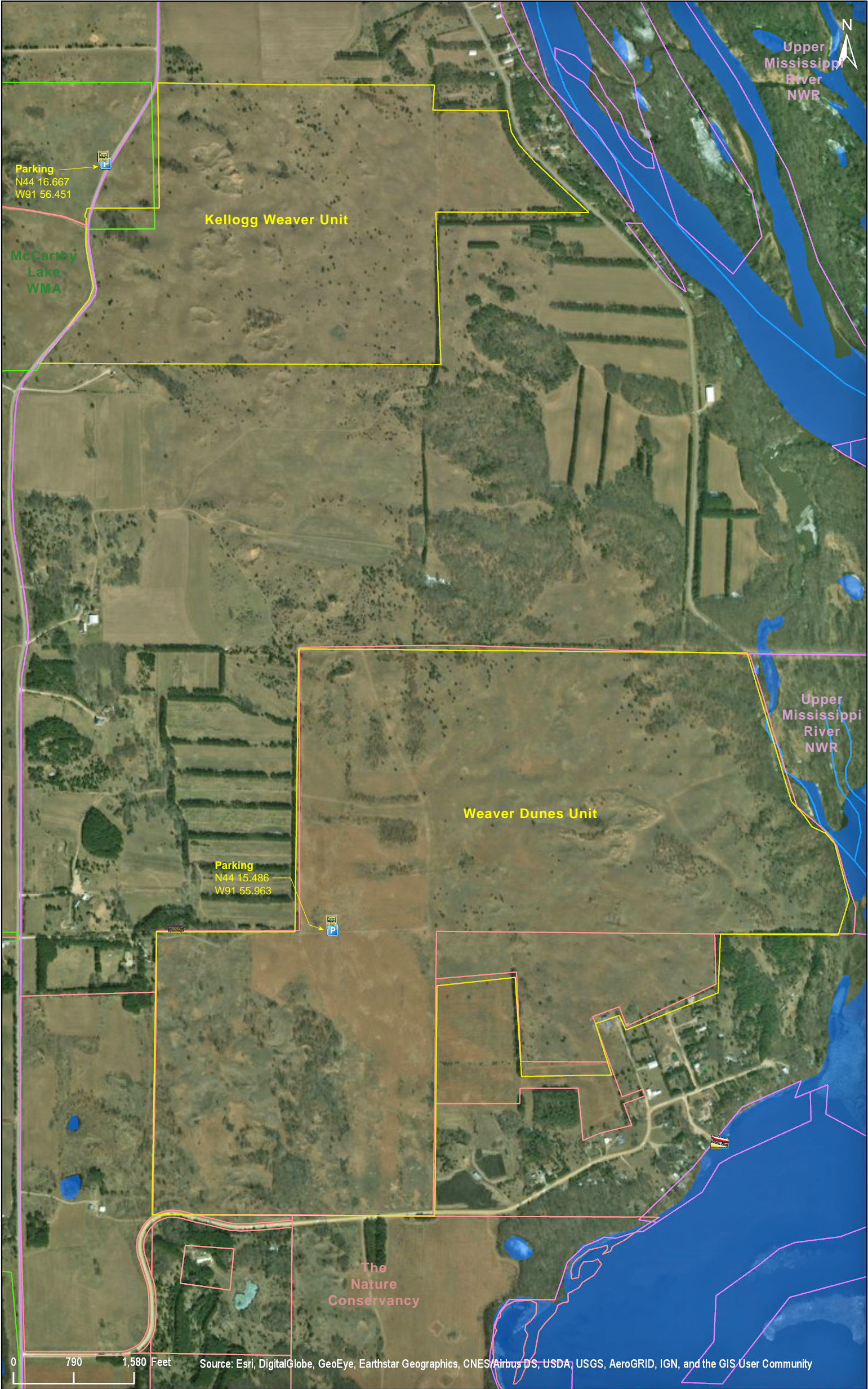
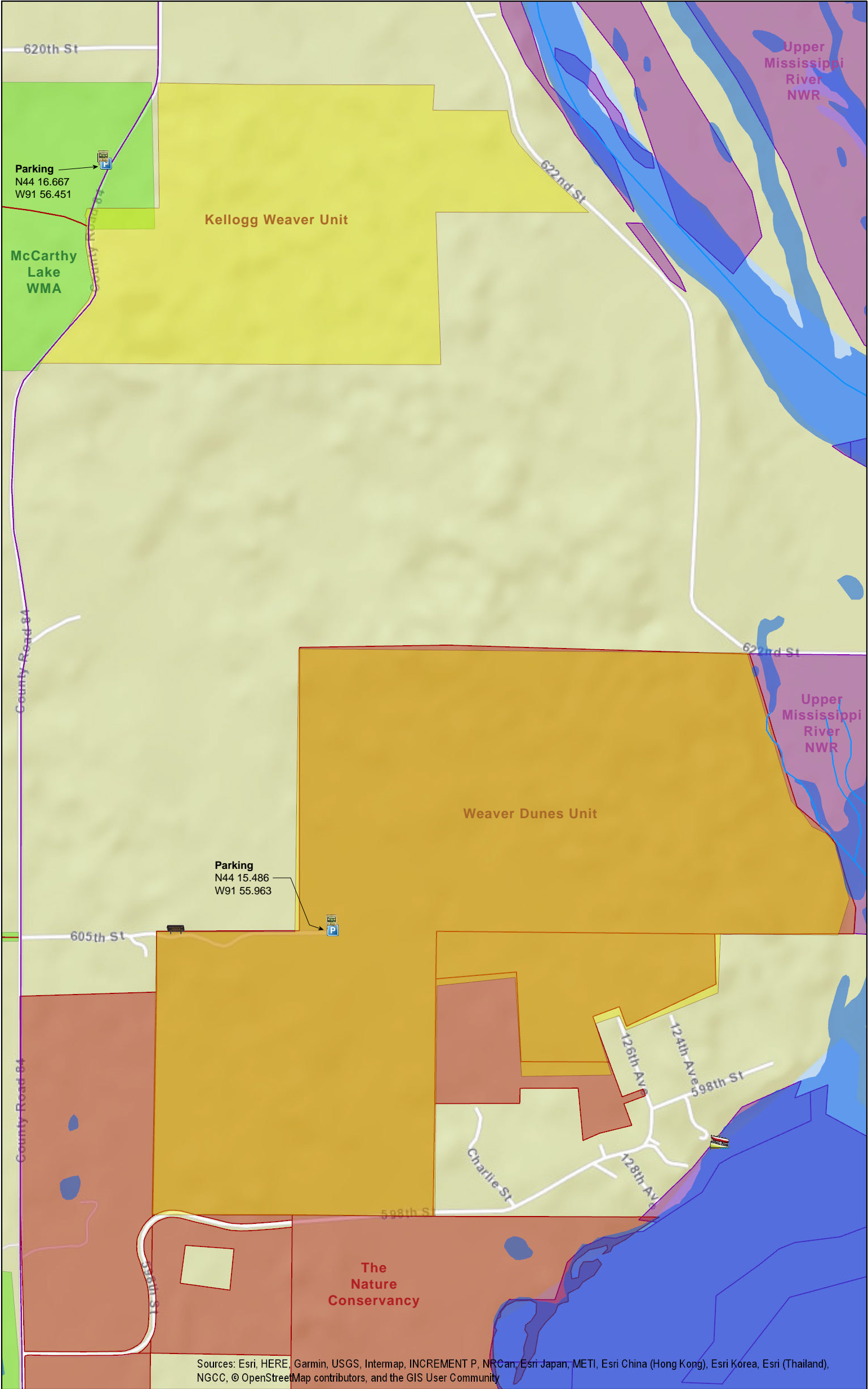


Kellogg Weaver Dunes SNA

Wabasha County



Source: Esri, DigitalGlobe, GeoEye, Earthstar Geographics, CNES/Airbus DS, USDA, USGS, AeroGRID, IGN, and the GIS User Community



Sources: Esri, HERE, Garmin, USGS, Intermap, INCREMENT P, NRCan, Esri Japan, METI, Esri China (Hong Kong), Esri Korea, Esri (Thailand), NGCC, © OpenStreetMap contributors, and the GIS User Community

Kellogg Weaver Dunes SNA

Directions and Notes from Minnesota DNR

Kellogg Weaver Unit

Directions: From Kellogg 4.3 miles E and S on Co Rd 84. Park in WMA lot on W. Hike E to site.

Lat/Lon: 44.277783, -91.940858

Weaver Dunes Unit

Directions: From Kellogg 5.5 miles E and S on Co Rd 84. E on Twp Rd 141 about 0.2 mile, stay left at fork and continue about 0.375 mile to parking at end of field road.

Lat/Lon: 44.2581, -91.932724

This site has no maintained trails or other recreational facilities. This site is in an Audubon Important Bird Area and Watchable Wildlife Viewing Area. McCarthy Lake WMA and the Upper Mississippi Wildlife & Fish Refuge are adjacent to this site.

Notes from MinnesotaSeasons.com

Parking

Kellogg Weaver Unit

N44 16.667, W91 56.451

Weaver Dunes Unit

N44 15.486, W91 55.963

DISCLAIMER OF WARRANTIES AND LIMITATIONS OF LIABILITY

MinnesotaSeasons.com, The Nature Conservancy, U.S. Department of Agriculture, Forest Service, U.S. Fish and Wildlife Service, the state of Minnesota, the Minnesota Department of Natural Resources, and their employees, make no representations or warranties, express or implied, with respect to the use of or reliance on the data provided herewith, regardless of its format or means of transmission. There are no guarantees or representations to the user as to the accuracy, currency, completeness, suitability or reliability of this data for any purpose. THE USER ACCEPTS THE DATA AND/OR SOFTWARE "AS IS" AND ASSUMES ALL RISKS ASSOCIATED WITH ITS USE.

IN NO EVENT SHALL MINNESOTASEASONS.COM, TNC, USDA-FS, USFWS, OR MNDNR BE LIABLE FOR ANY DIRECT, INDIRECT, INCIDENTAL, SPECIAL, EXEMPLARY, OR CONSEQUENTIAL DAMAGES (INCLUDING, BUT NOT LIMITED TO, PROCUREMENT OF SUBSTITUTE GOODS OR SERVICES; LOSS OF USE, DATA, OR PROFITS; OR BUSINESS INTERRUPTION) HOWEVER CAUSED AND ON ANY THEORY OF LIABILITY, WHETHER IN CONTRACT, STRICT LIABILITY, OR TORT (INCLUDING NEGLIGENCE OR OTHERS) ARISING IN ANY WAY OUT OF THE USE OF THIS DATA, EVEN IF ADVISED OF THE POSSIBILITY OF SUCH DAMAGE OR FOR ANY CLAIM BY ANY OTHER PARTY.

Your use of the data is acceptance on your part of the terms and conditions set forth herein.