

La Salle Lake SNA

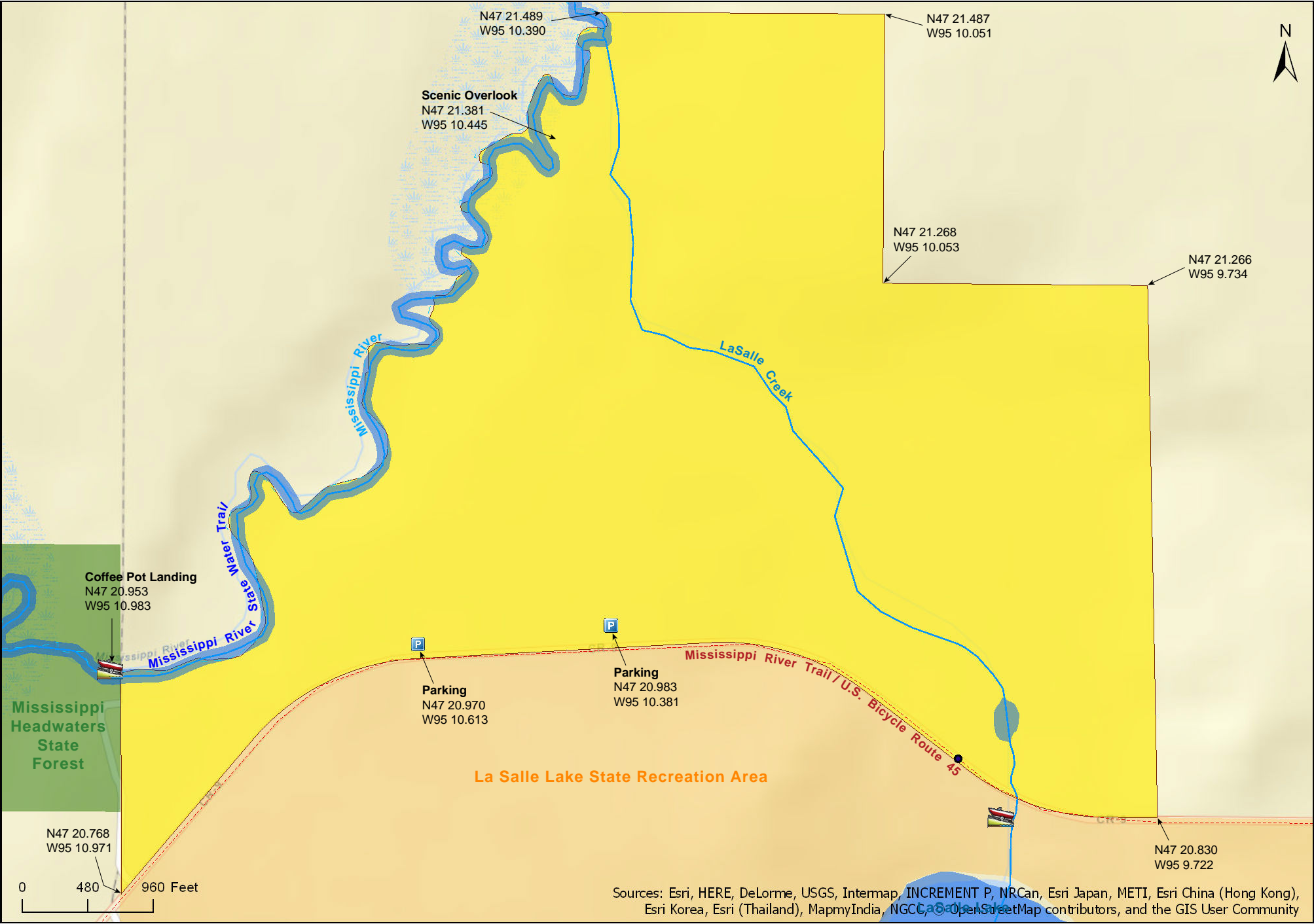
Hubbard County



Source: Esri, DigitalGlobe, GeoEye, Earthstar Geographics, CNES/Airbus DS, USDA, USGS, AeroGRID, IGN, and the GIS User Community

La Salle Lake SNA

Hubbard County



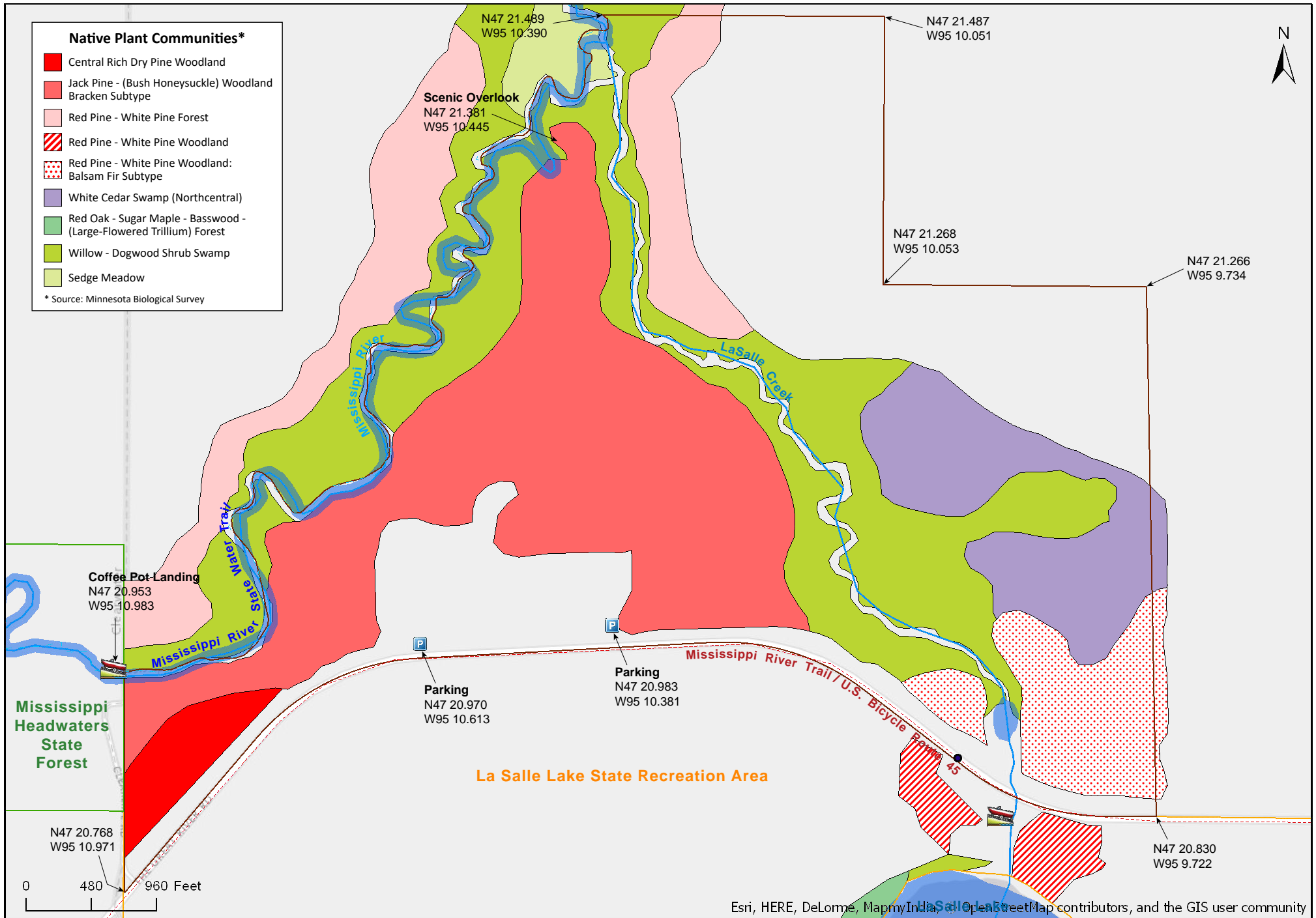
La Salle Lake SNA

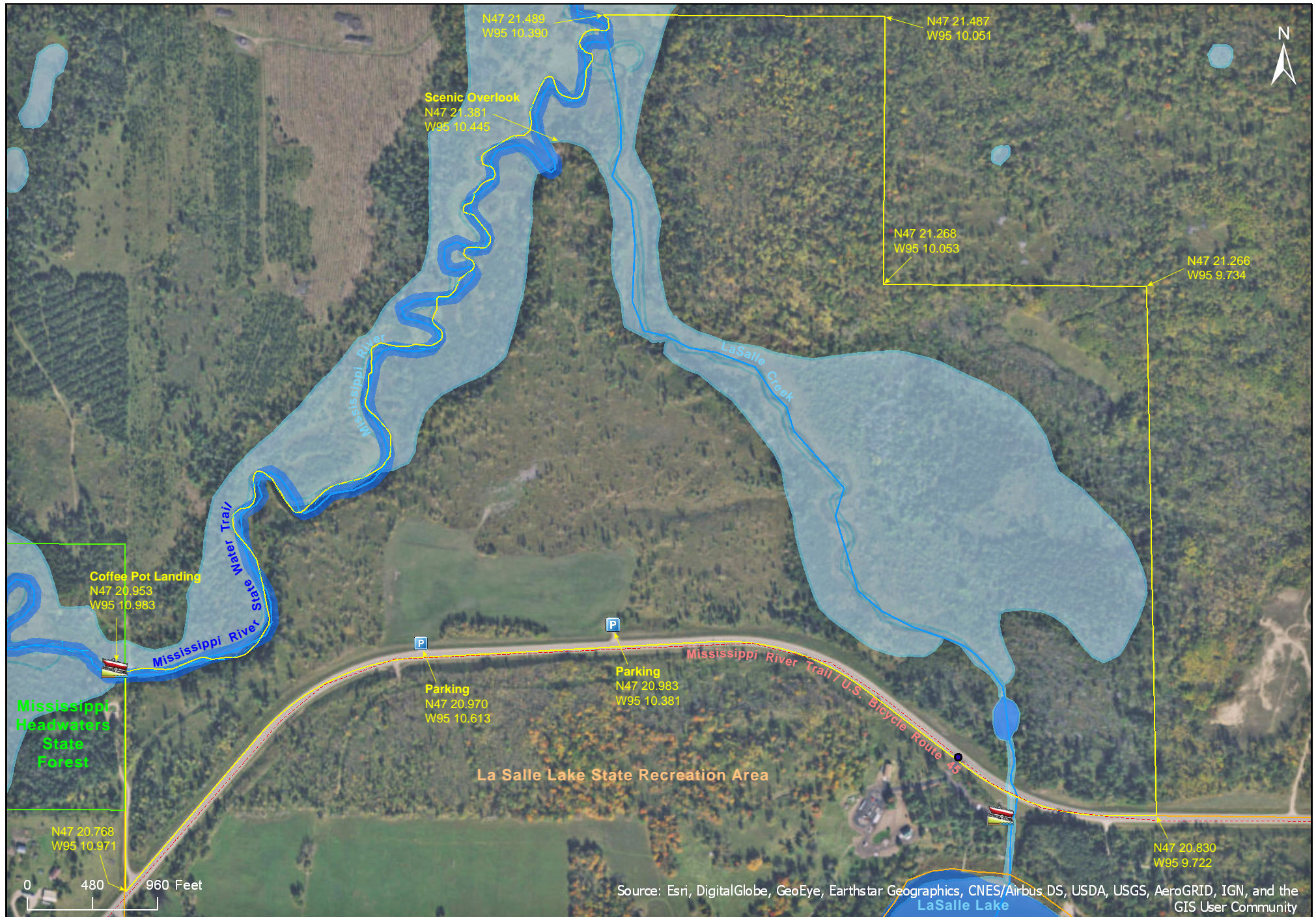
Hubbard County



La Salle Lake SNA

Hubbard County





La Salle Lake SNA

Directions and Notes from Minnesota DNR

Directions: From Becida 4.5 miles W on Co Hwy 9. Park in lot on N.

Lat/Lon: 47.349711, -95.173007

A hiking trail passes through site, see detail map. Recreational facilities available in La Salle Lake State Recreation Area. The Mississippi River Water Trail is adjacent to this site.

Notes from MinnesotaSeasons.com

Parking

N47 20.983, W95 10.381

N47 20.970, W95 10.613

Overlooks

Several places along the bluff on the south side of the Mississippi River valley provide a scenic but obstructed view of the Mississippi River valley. There is a spectacular, unobstructed overlook at the northernmost point of the bluff. The La Salle Lake SRA map shows a hiking trail leading from the parking area to this overlook. In June, 2013, the trail was not discernible on the ground.

Mississippi River Footbridge

Coffeepot Landing, a public canoe access, is adjacent to this SNA. It includes a footbridge across the Mississippi River.

Debris Field

On July 2, 2012, a severe thunderstorm went through Clearwater and Hubbard Counties. Itasca State Park, La Salle Lake SNA, and La Salle Lake State Recreational Area were all in the path of the thunderstorm. The storm brought straight line winds with speeds in excess of 80 miles per hour. Especially hard hit was the jack pine forest in this SNA southwest of the confluence of the Mississippi River and LaSalle Creek. In this area almost every tree was uprooted or snapped.

A year later, in June, 2013, most of the fallen trees have been removed but a few remain. The fallen trees, along with tree stumps and large branches, litter the ground over what remains a large debris field. Plant species usually found only in woodlands, including round-lobed hepatica, wild sasparilla, and Canada mayflower, grow in this area with no overstory.

Nature has years of decomposition and revegetation work to accomplish here. Until then, visitors will stumble over debris concealed under a fresh understory of early successional species.

DISCLAIMER OF WARRANTIES AND LIMITATIONS OF LIABILITY

MinnesotaSeasons.com, The Nature Conservancy, U.S. Department of Agriculture, Forest Service, U.S. Fish and Wildlife Service, the state of Minnesota, the Minnesota Department of Natural Resources, and their employees, make no representations or warranties, express or implied, with respect to the use of or reliance on the data provided herewith, regardless of its format or means of transmission. There are no guarantees or representations to the user as to the accuracy, currency, completeness, suitability or reliability of this data for any purpose. THE USER ACCEPTS THE DATA AND/OR SOFTWARE "AS IS" AND ASSUMES ALL RISKS ASSOCIATED WITH ITS USE.

IN NO EVENT SHALL MINNESOTASEASONS.COM, TNC, USDA-FS, USFWS, OR MNDNR BE LIABLE FOR ANY DIRECT, INDIRECT, INCIDENTAL, SPECIAL, EXEMPLARY, OR CONSEQUENTIAL DAMAGES (INCLUDING, BUT NOT LIMITED TO, PROCUREMENT OF SUBSTITUTE GOODS OR SERVICES; LOSS OF USE, DATA, OR PROFITS; OR BUSINESS INTERRUPTION) HOWEVER CAUSED AND ON ANY THEORY OF LIABILITY, WHETHER IN CONTRACT, STRICT LIABILITY, OR TORT (INCLUDING NEGLIGENCE OR OTHERS) ARISING IN ANY WAY OUT OF THE USE OF THIS DATA, EVEN IF ADVISED OF THE POSSIBILITY OF SUCH DAMAGE OR FOR ANY CLAIM BY ANY OTHER PARTY.

Your use of the data is acceptance on your part of the terms and conditions set forth herein.