

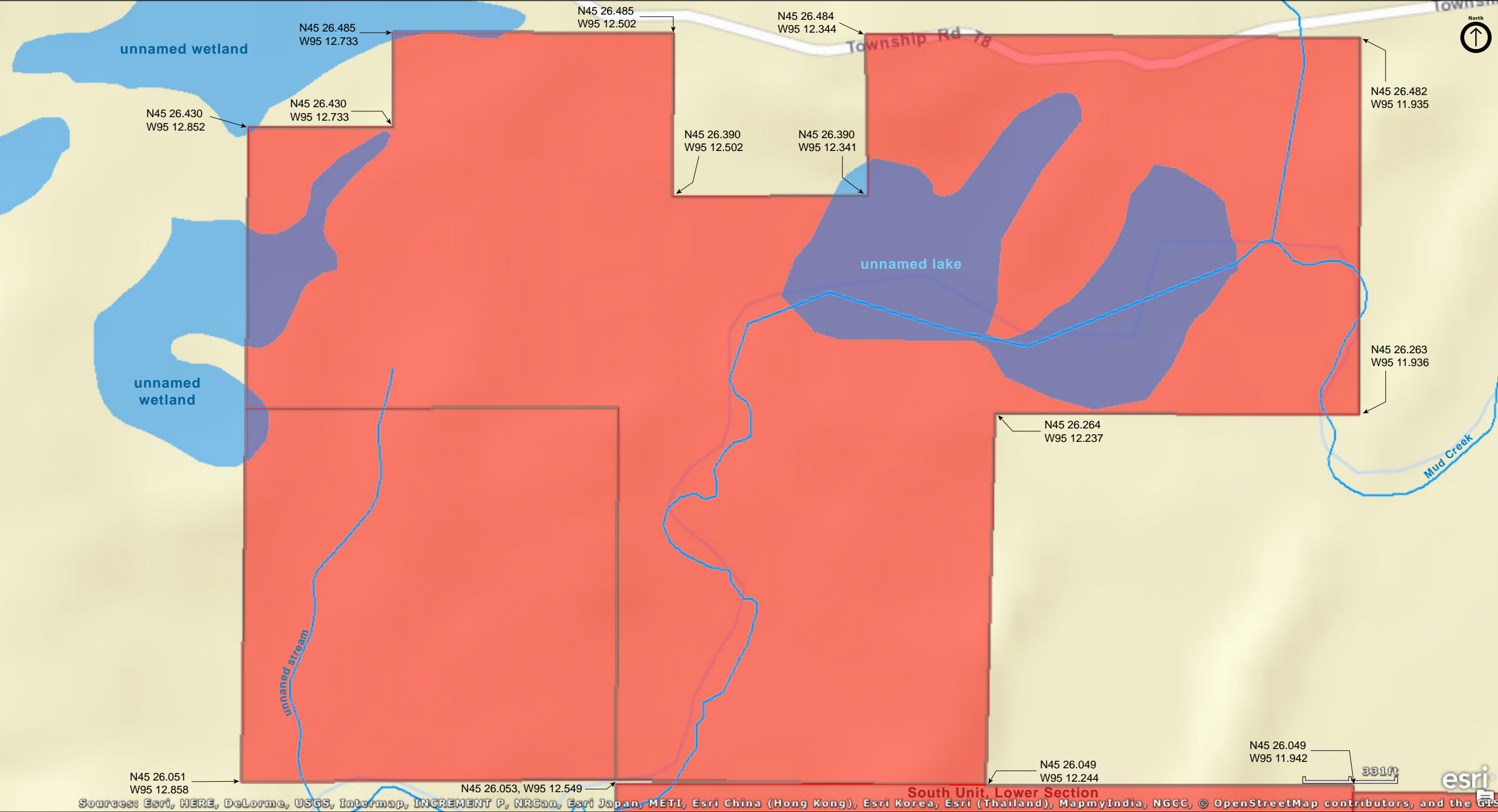
Lake Johanna Esker
South Unit, Upper Section

Pope County



Lake Johanna Esker
South Unit, Upper Section

Pope County



Sources: Esri, HERE, DeLorme, USGS, Intermap, INCREMENT P, NRCan, Esri Japan, METI, Esri China (Hong Kong), Esri Korea, Esri (Thailand), MapmyIndia, NGCC, © OpenStreetMap contributors, and the GIS

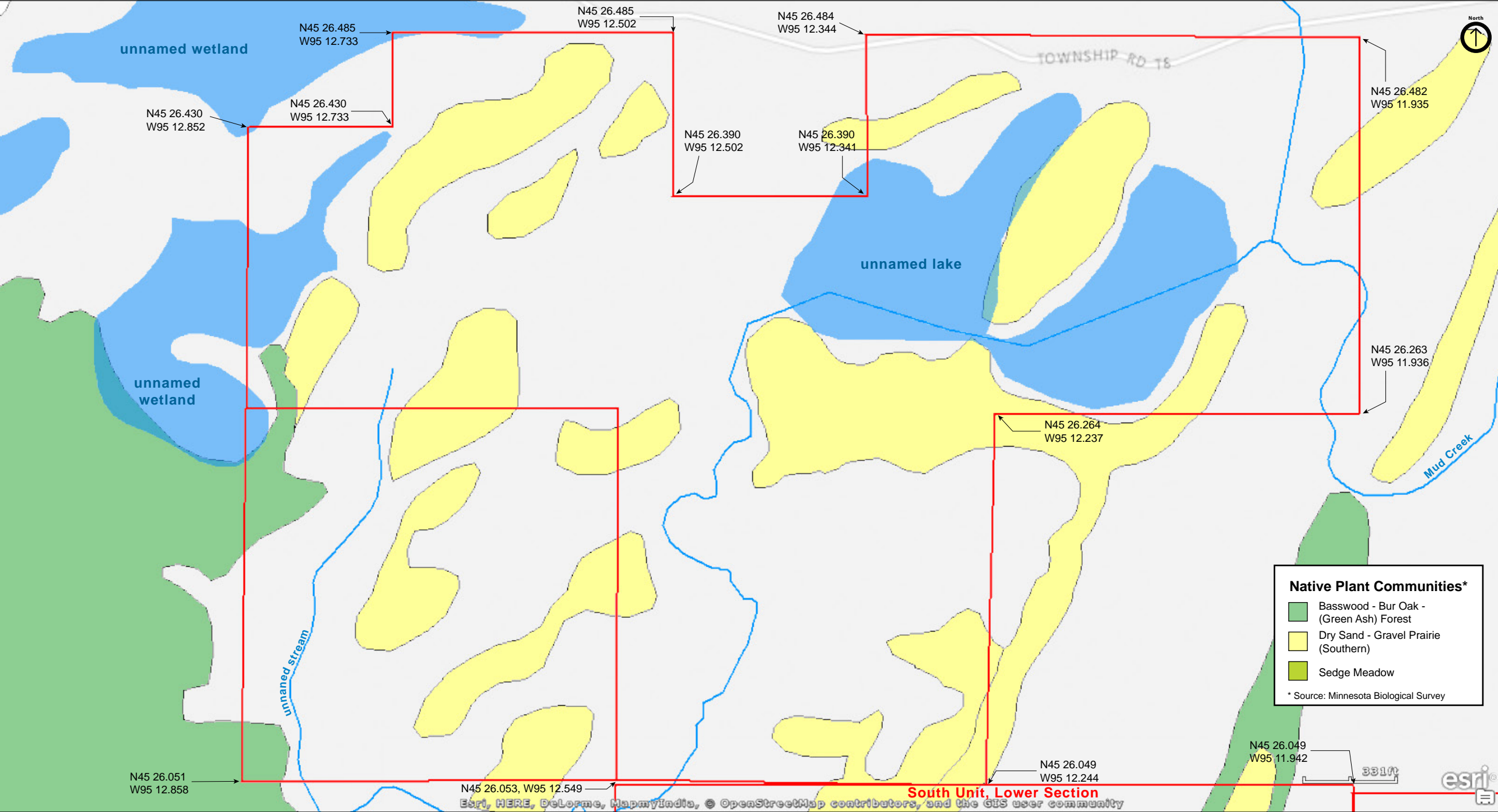
Lake Johanna Esker
South Unit, Upper Section

Pope County



Lake Johanna Esker
South Unit, Upper Section

Pope County



Lake Johanna Esker
South Unit, Upper Section



Lake Johanna Esker

South Unit, Upper Section

Directions and Notes from The Nature Conservancy

Location: Portions of SE 1/4, E 1/2 of SW 1/4, Portions of NW 1/4, and NW 1/4 NE 1/4 of Sec 28, and portions of SE 1/4, SW 1/4 of Sec 21, Lake Johanna Township, Pope County; 95°12'14"W 45°25'37"N (45.4269444°, -095.2038889°)

Notes from MinnesotaSeasons.com

Parking

N45 25.625, W95 12.346

Park in the pull-off in front of the gate on the north side of Township Road T7.

DISCLAIMER OF WARRANTIES AND LIMITATIONS OF LIABILITY

MinnesotaSeasons.com, The Nature Conservancy, U.S. Department of Agriculture, Forest Service, U.S. Fish and Wildlife Service, the state of Minnesota, the Minnesota Department of Natural Resources, and their employees, make no representations or warranties, express or implied, with respect to the use of or reliance on the data provided herewith, regardless of its format or means of transmission. There are no guarantees or representations to the user as to the accuracy, currency, completeness, suitability or reliability of this data for any purpose. THE USER ACCEPTS THE DATA AND/OR SOFTWARE "AS IS" AND ASSUMES ALL RISKS ASSOCIATED WITH ITS USE.

IN NO EVENT SHALL MINNESOTASEASONS.COM, TNC, USDA-FS, USFWS, OR MNDNR BE LIABLE FOR ANY DIRECT, INDIRECT, INCIDENTAL, SPECIAL, EXEMPLARY, OR CONSEQUENTIAL DAMAGES (INCLUDING, BUT NOT LIMITED TO, PROCUREMENT OF SUBSTITUTE GOODS OR SERVICES; LOSS OF USE, DATA, OR PROFITS; OR BUSINESS INTERRUPTION) HOWEVER CAUSED AND ON ANY THEORY OF LIABILITY, WHETHER IN CONTRACT, STRICT LIABILITY, OR TORT (INCLUDING NEGLIGENCE OR OTHERS) ARISING IN ANY WAY OUT OF THE USE OF THIS DATA, EVEN IF ADVISED OF THE POSSIBILITY OF SUCH DAMAGE OR FOR ANY CLAIM BY ANY OTHER PARTY.

Your use of the data is acceptance on your part of the terms and conditions set forth herein.