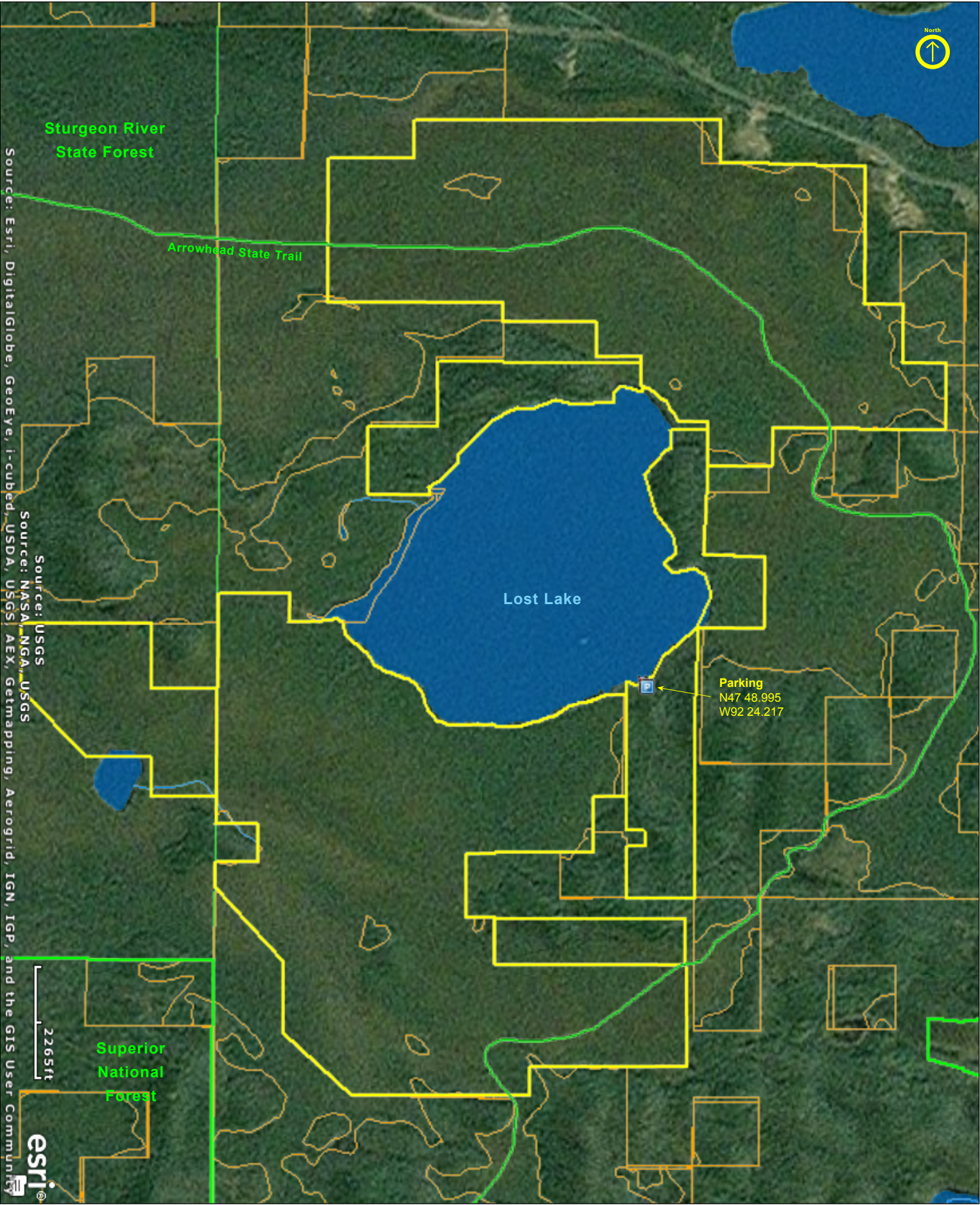


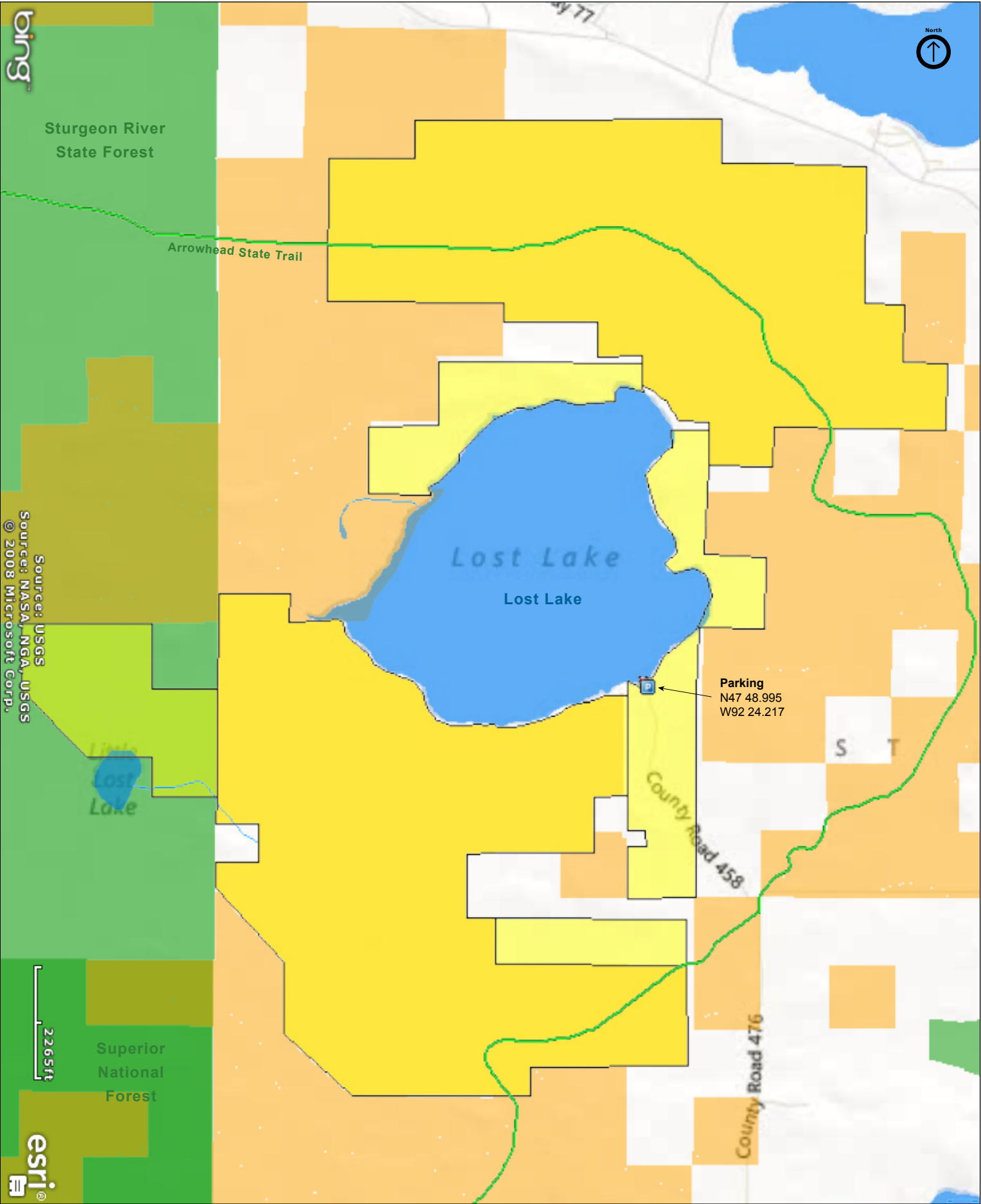
Lost Lake Peatland SNA

St. Louis County



Lost Lake Peatland SNA

St. Louis County



Lost Lake Peatland SNA

Directions and Notes from Minnesota DNR

From Tower 5 miles W on MN Hwy 169, then 1.25 miles W on MN Hwy 1, then 1 mile N on Co Rd 476 (Lost Lake Rd), then 1 mile NW on Co Rd 458 (Roberts Rd). Park in water access at dead end.

A GPS and detailed topographical maps are advised to visit this site.

The Arrowhead State Trail (primarily a snowmobile trail) passes through the site.

The Sturgeon River State Forest is adjacent to this site.

Notes from MinnesotaSeasons.com

Parking

Lost Lake Public Water Access

N47 48.995, W92 24.217

Park at the Lost Lake Public Water Access on the southeast shore of Lost Lake at the end of County Road 458.

GPS

A GPS unit and detailed topographical maps are recommended.

Arrowhead State Trail

There are no maintained hiking trails. The 135 mile Arrowhead State Trail passes through this site. The Arrowhead State Trail is primarily a snowmobile trail. Only 69 of the 135 miles are considered suitable for hiking in the summer. The trail is accessible one mile southeast of the parking area on County Road 458 where it intersects with County Road 476. However, there may be no designated parking at that location.

DISCLAIMER OF WARRANTIES AND LIMITATIONS OF LIABILITY

MinnesotaSeasons.com, The Nature Conservancy, U.S. Department of Agriculture, Forest Service, U.S. Fish and Wildlife Service, the state of Minnesota, the Minnesota Department of Natural Resources, and their employees, make no representations or warranties, express or implied, with respect to the use of or reliance on the data provided herewith, regardless of its format or means of transmission. There are no guarantees or representations to the user as to the accuracy, currency, completeness, suitability or reliability of this data for any purpose. THE USER ACCEPTS THE DATA AND/OR SOFTWARE "AS IS" AND ASSUMES ALL RISKS ASSOCIATED WITH ITS USE.

IN NO EVENT SHALL MINNESOTASEASONS.COM, TNC, USDA-FS, USFWS, OR MNDNR BE LIABLE FOR ANY DIRECT, INDIRECT, INCIDENTAL, SPECIAL, EXEMPLARY, OR CONSEQUENTIAL DAMAGES (INCLUDING, BUT NOT LIMITED TO, PROCUREMENT OF SUBSTITUTE GOODS OR SERVICES; LOSS OF USE, DATA, OR PROFITS; OR BUSINESS INTERRUPTION) HOWEVER CAUSED AND ON ANY THEORY OF LIABILITY, WHETHER IN CONTRACT, STRICT LIABILITY, OR TORT (INCLUDING NEGLIGENCE OR OTHERS) ARISING IN ANY WAY OUT OF THE USE OF THIS DATA, EVEN IF ADVISED OF THE POSSIBILITY OF SUCH DAMAGE OR FOR ANY CLAIM BY ANY OTHER PARTY.

Your use of the data is acceptance on your part of the terms and conditions set forth herein.