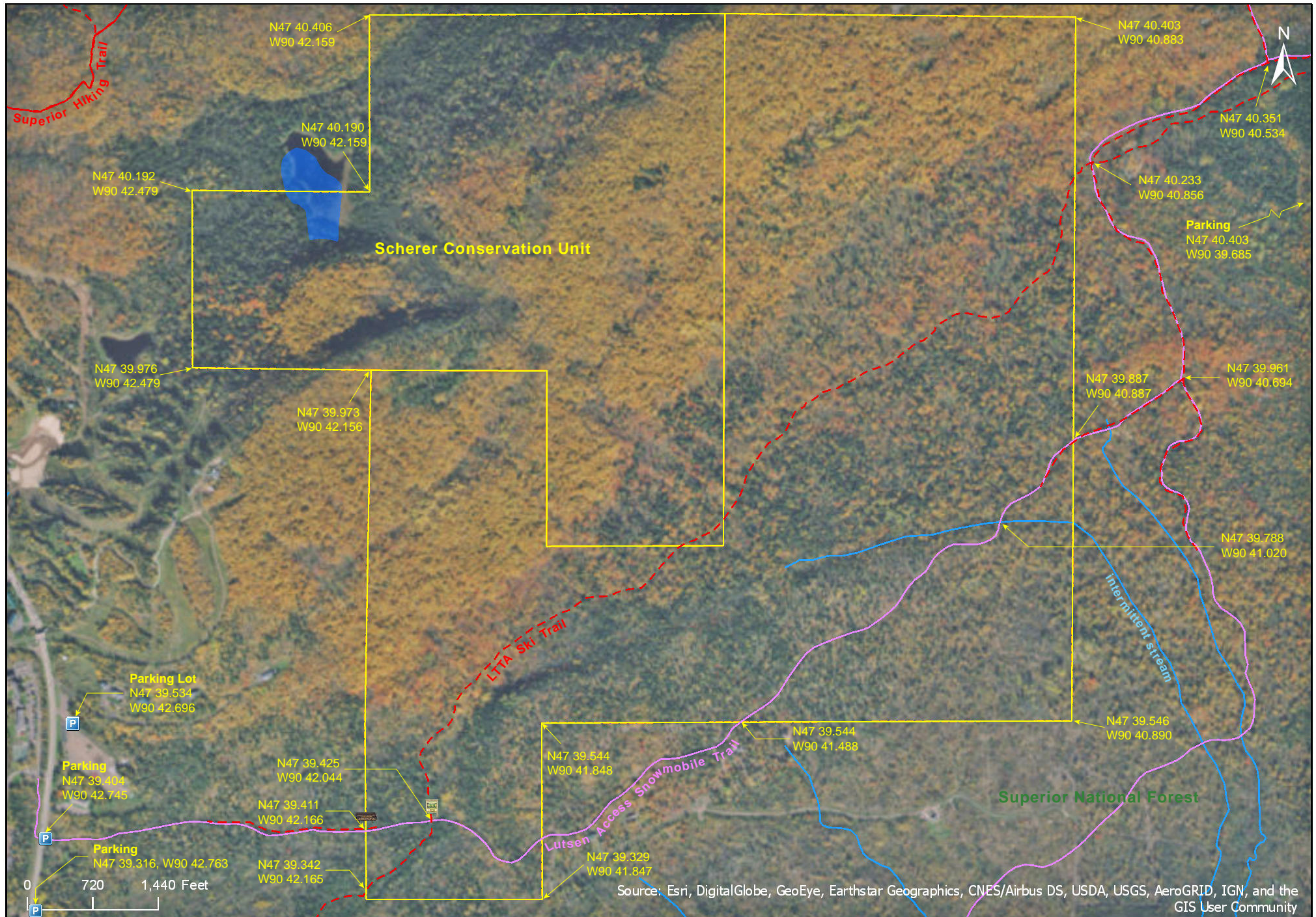




# Lutsen SNA

Cook County

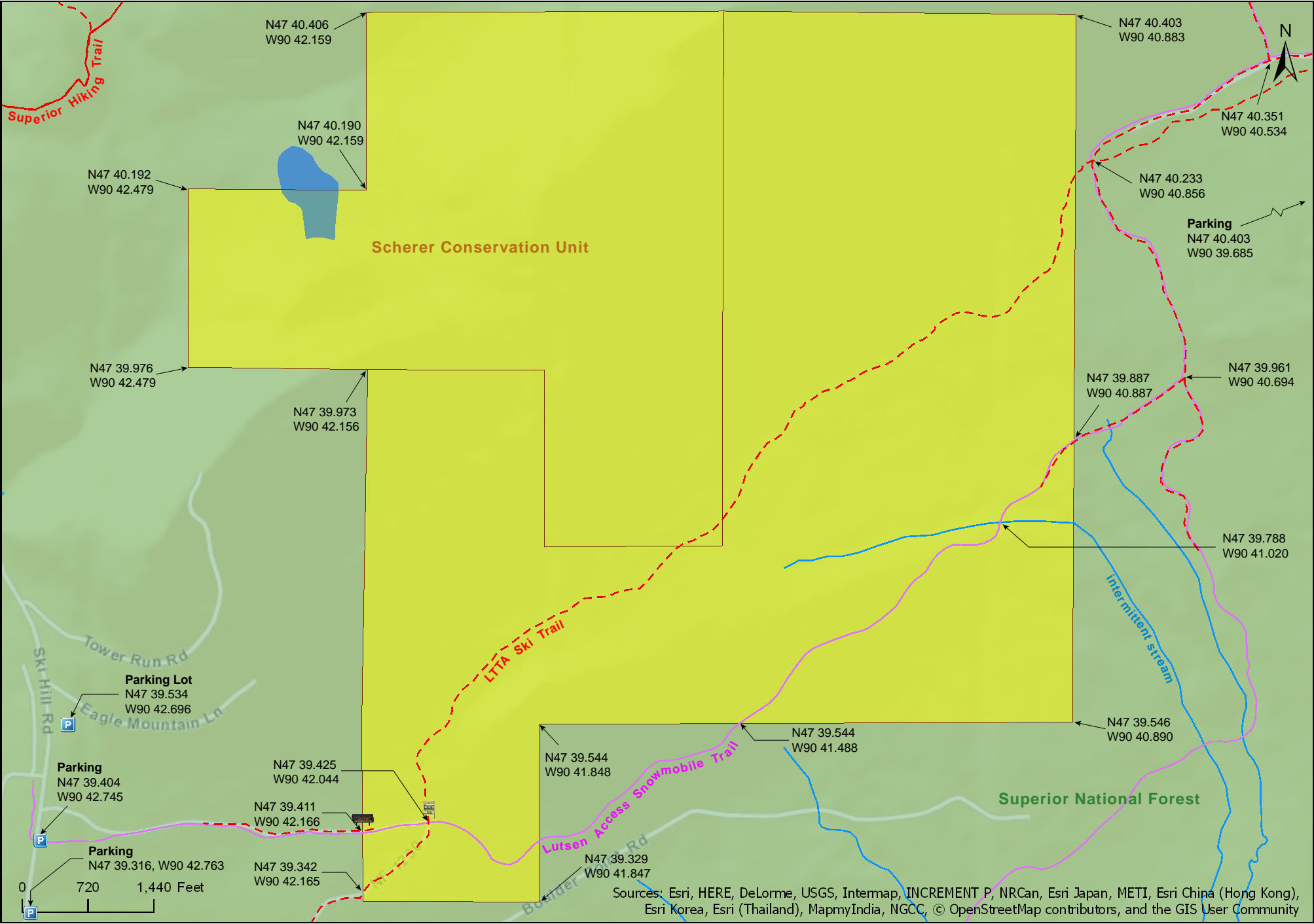


Source: Esri, DigitalGlobe, GeoEye, Earthstar Geographics, CNES/Airbus DS, USDA, USGS, AeroGRID, IGN, and the GIS User Community



Lutsen SNA

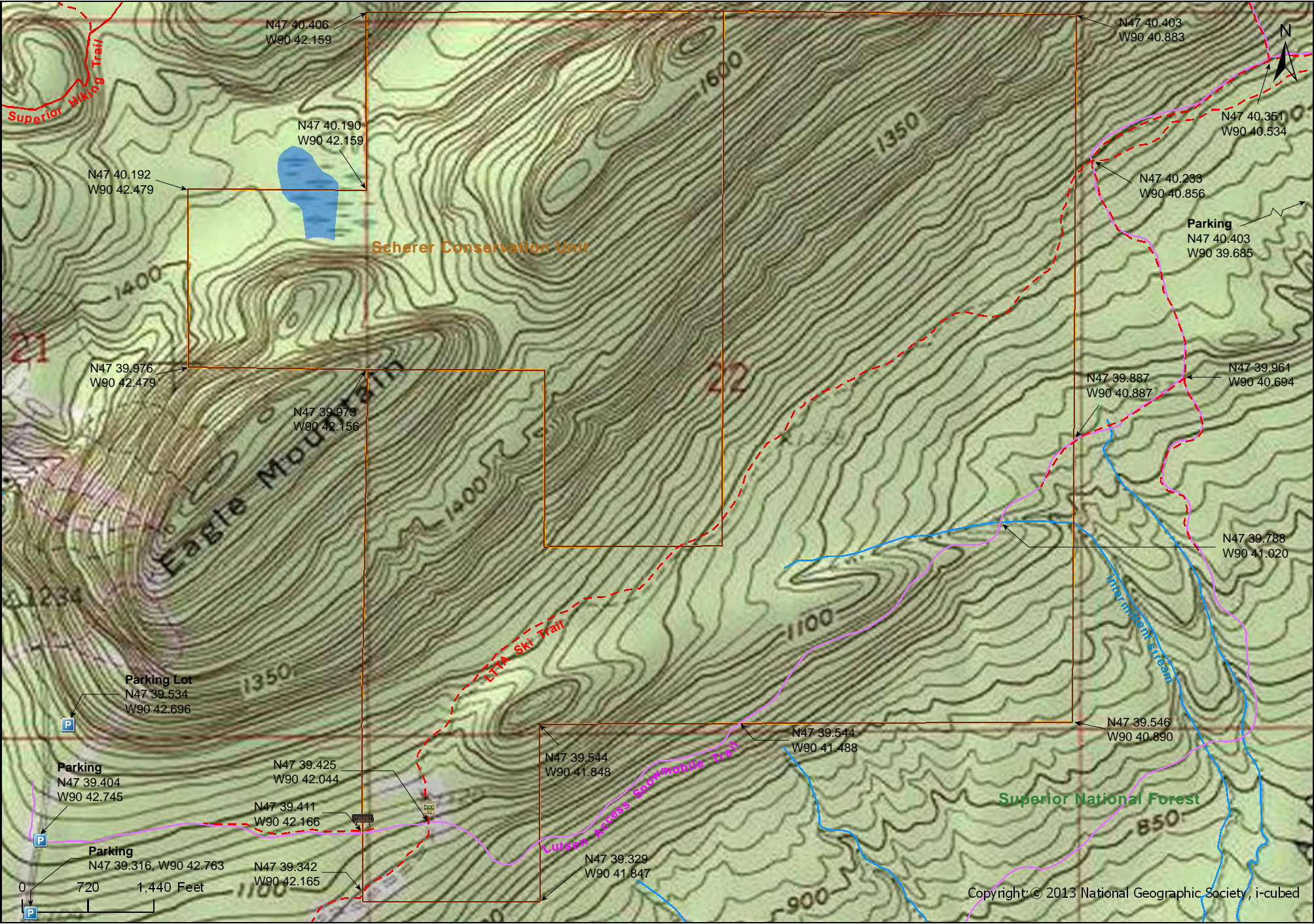
Cook County





Lutsen SNA

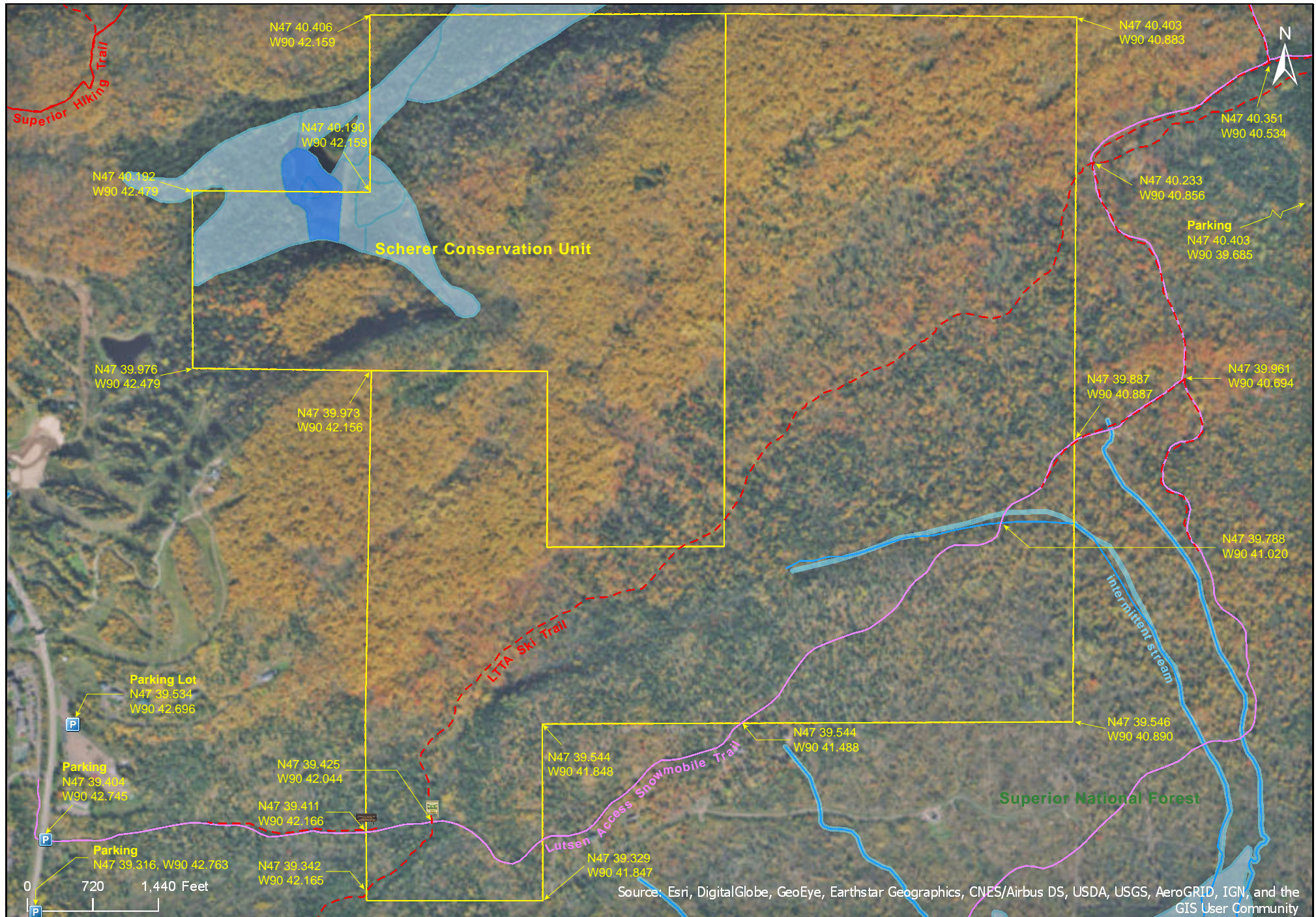
Cook County













# Lutsen SNA

## **Directions and Notes from Minnesota DNR**

### **Ski Hill Rd 1**

**Directions:** From Lutsen 1.5 miles S on MN Hwy 61, then 1.4 miles N on Co Hwy 5 (Ski Hill Rd). Park on E then take snowmobile trail E into site.

**Lat/Lon:** 47.6589, -90.711595

### **Ski Hill Rd 2**

**Directions:** From Lutsen 1.5 miles S on MN Hwy 61, then 0.75 mile N on Co Hwy 5 (Ski Hill Rd). Park on E then take ski trail E into site.

**Lat/Lon:** 47.649742, -90.709059

### **Caribou Trl**

**Directions:** From Lutsen 1.4 miles N on Co Hwy 4 (Caribou Trl), then about 300 feet W on Homestead Road. Park on N road shoulder prior to where road narrows. Take snowmobile trail SW into site.

**Lat/Lon:** 47.67338, -90.661425

A ski trail and snowmobile trail pass through site, see detail map. This site is in an Audubon Important Bird Area. This site is within the Superior National Forest.

## **Notes from MinnesotaSeasons.com**

### **Parking**

County Road 5, Lutsen Ski Area parking lot, north of trail  
N47 39.534, W90 42.696

County Road 5, Lutsen Access Snowmobile Trail, pull off at trail  
N47 39.404, W90 42.745

County Road 5, Lutsen Access Snowmobile Trail, pull-off south of trail  
N47 39.316, W90 42.763

County Road 5, LTТА Ski Trail, pull-off at trail  
N47 38.951, W90 42.475

Homestead Road & County Road 4  
N47 40.403, W90 39.685

**Recommended:** Park on the pull off on County Road 5 at the Lutsen Access Trail at the coordinates shown above.

## **Hiking Trails**

The Lutsen Access Snowmobile Trail follows a former forest road. LTТА Ski Trail (NF-1230) is a former forest road now used as a ski trail.

Follow the Lutsen Access Trail almost ½ mile east to the SNA. Follow it another 140 yards to the information kiosk and trail intersection. At the intersection the Lutsen Access Snowmobile Trail continues east and the LTТА Ski Trail (NF-1230), heads north and south. Follow NF-1230 north and northeast 1.4 miles to the east border of the SNA. At this point either double back to the kiosk, or continue 40 yards northeast to another trail intersection, then take the Lutsen Access Snowmobile Trail back to to the kiosk.

## **DISCLAIMER OF WARRANTIES AND LIMITATIONS OF LIABILITY**

MinnesotaSeasons.com, The Nature Conservancy, U.S. Department of Agriculture, Forest Service, U.S. Fish and Wildlife Service, the state of Minnesota, the Minnesota Department of Natural Resources, and their employees, make no representations or warranties, express or implied, with respect to the use of or reliance on the data provided herewith, regardless of its format or means of transmission. There are no guarantees or representations to the user as to the accuracy, currency, completeness, suitability or reliability of this data for any purpose. THE USER ACCEPTS THE DATA AND/OR SOFTWARE "AS IS" AND ASSUMES ALL RISKS ASSOCIATED WITH ITS USE.

IN NO EVENT SHALL MINNESOTASEASONS.COM, TNC, USDA-FS, USFWS, OR MNDNR BE LIABLE FOR ANY DIRECT, INDIRECT, INCIDENTAL, SPECIAL, EXEMPLARY, OR CONSEQUENTIAL DAMAGES (INCLUDING, BUT NOT LIMITED TO, PROCUREMENT OF SUBSTITUTE GOODS OR SERVICES; LOSS OF USE, DATA, OR PROFITS; OR BUSINESS INTERRUPTION) HOWEVER CAUSED AND ON ANY THEORY OF LIABILITY, WHETHER IN CONTRACT, STRICT LIABILITY, OR TORT (INCLUDING NEGLIGENCE OR OTHERS) ARISING IN ANY WAY OUT OF THE USE OF THIS DATA, EVEN IF ADVISED OF THE POSSIBILITY OF SUCH DAMAGE OR FOR ANY CLAIM BY ANY OTHER PARTY.

Your use of the data is acceptance on your part of the terms and conditions set forth herein.