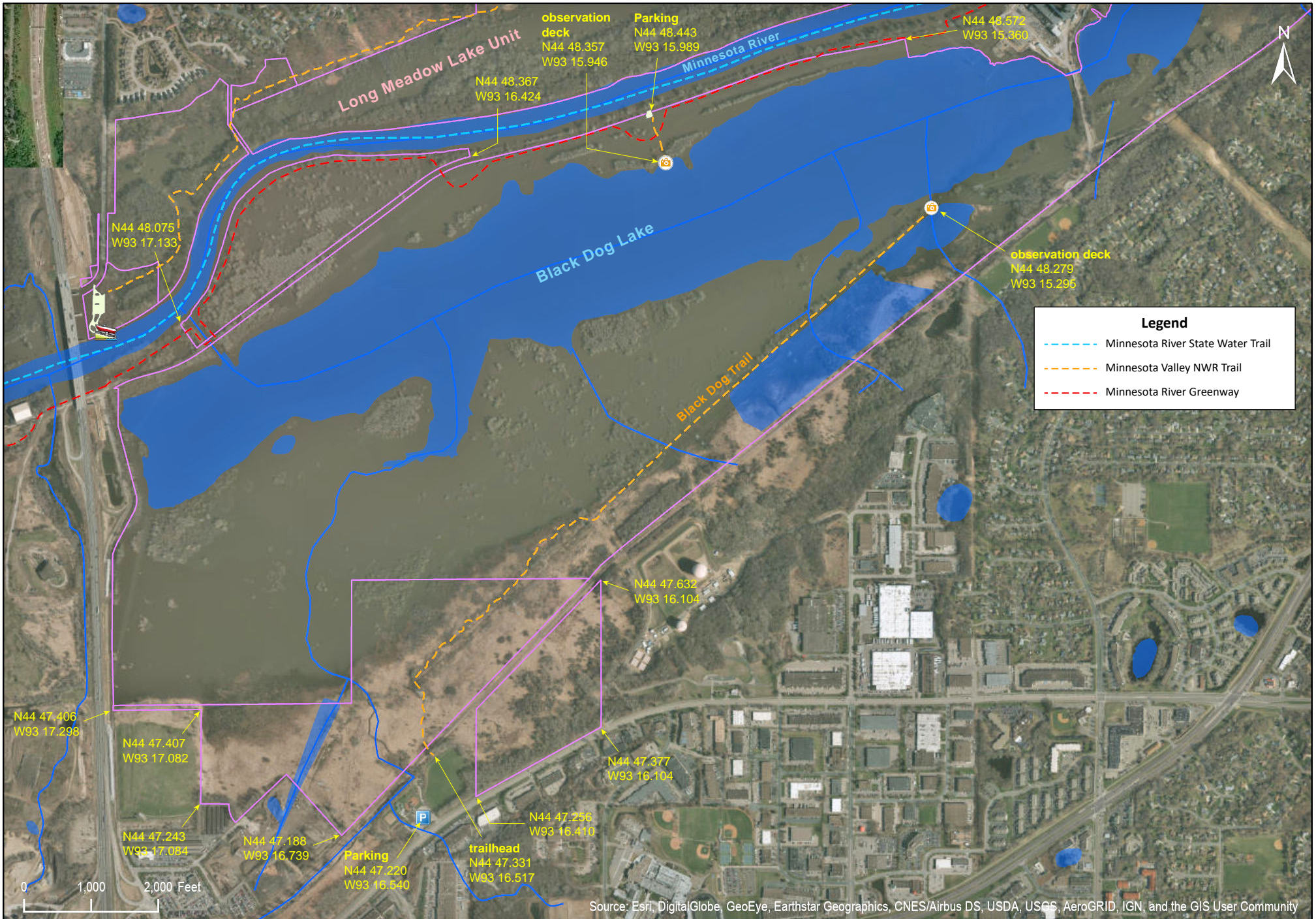


# Minnesota Valley NWR Black Dog Preserve Unit, West Section

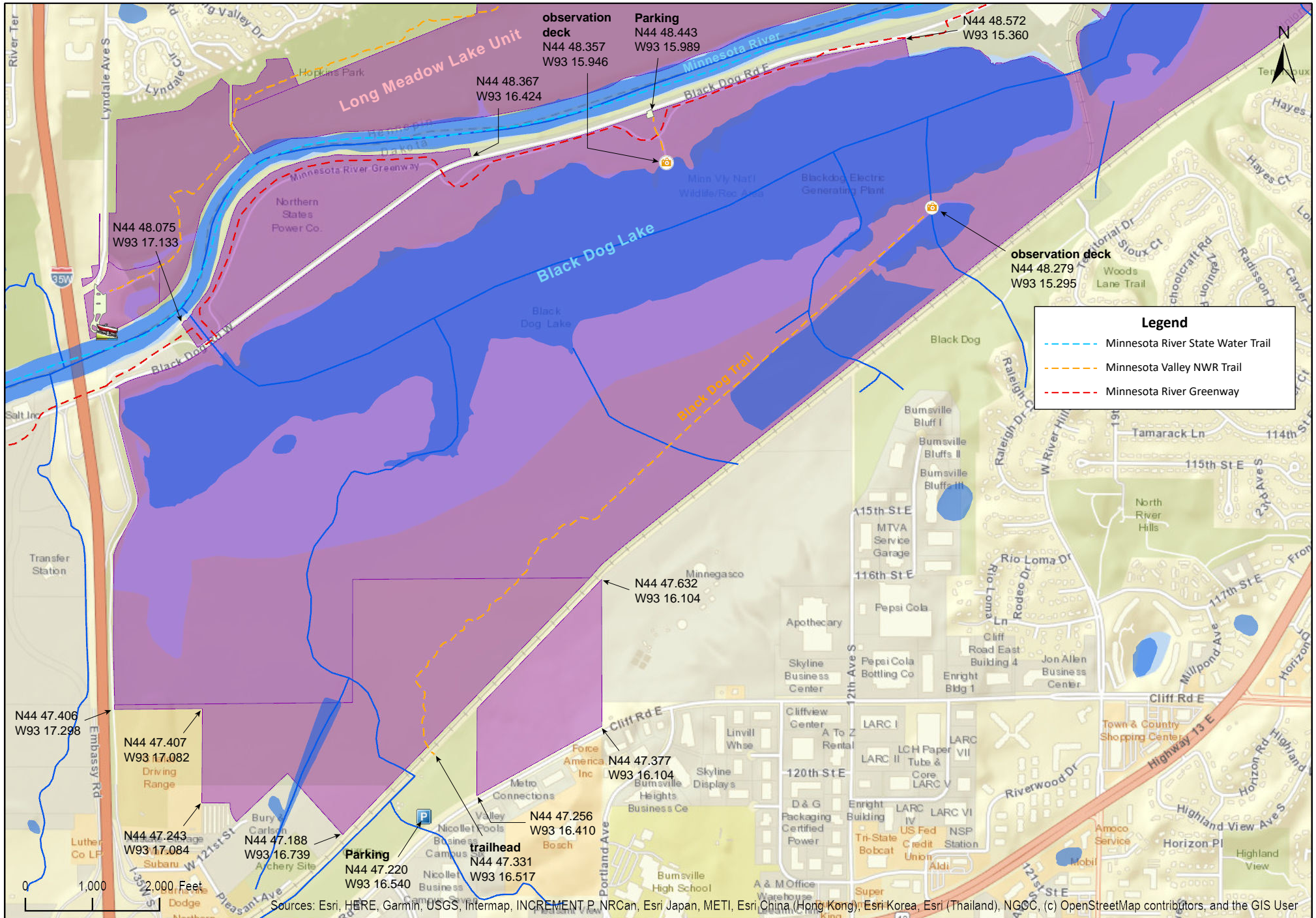
Dakota County





# Minnesota Valley NWR Black Dog Preserve Unit, West Section

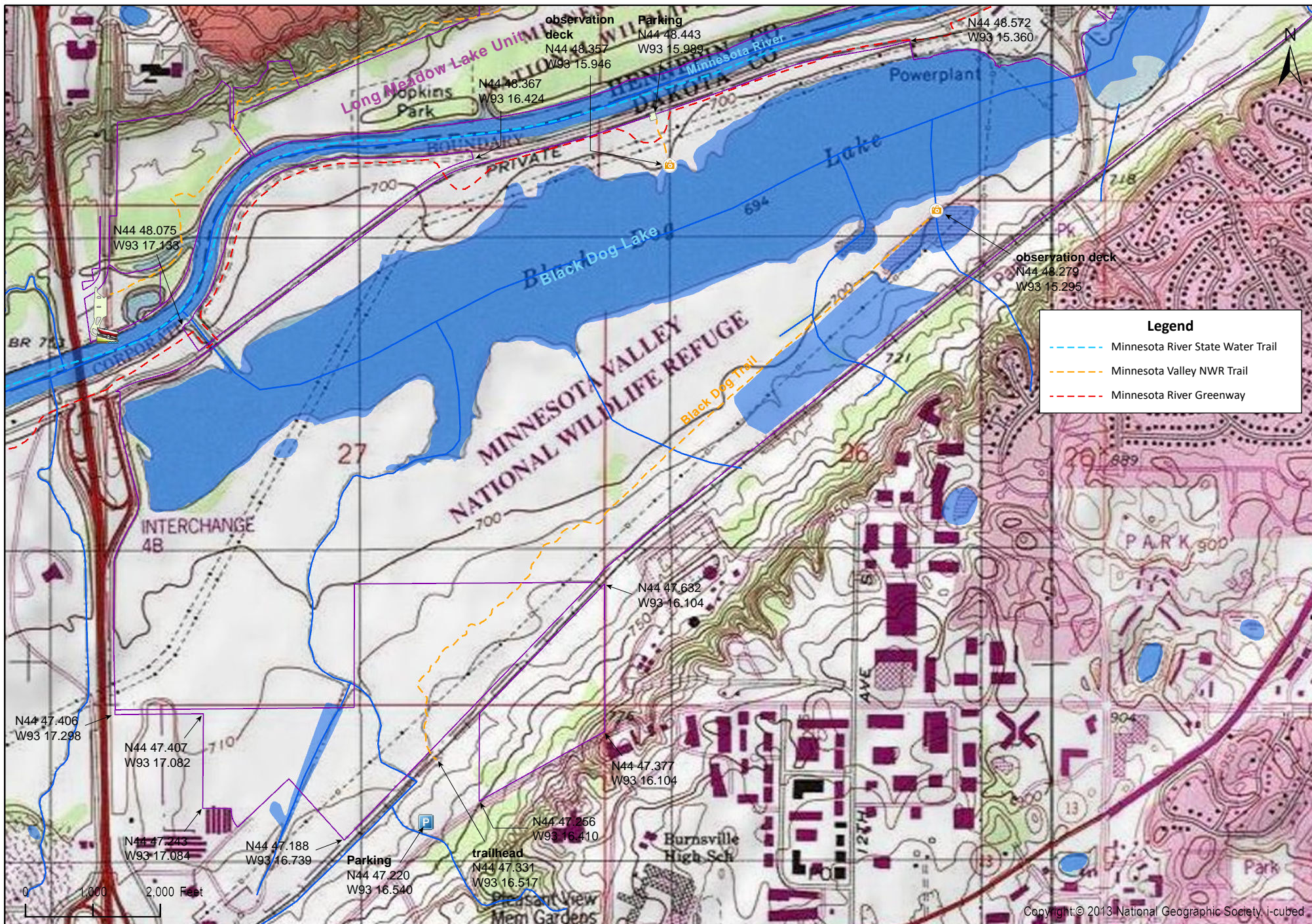
Dakota County





# Minnesota Valley NWR Black Dog Preserve Unit, West Section

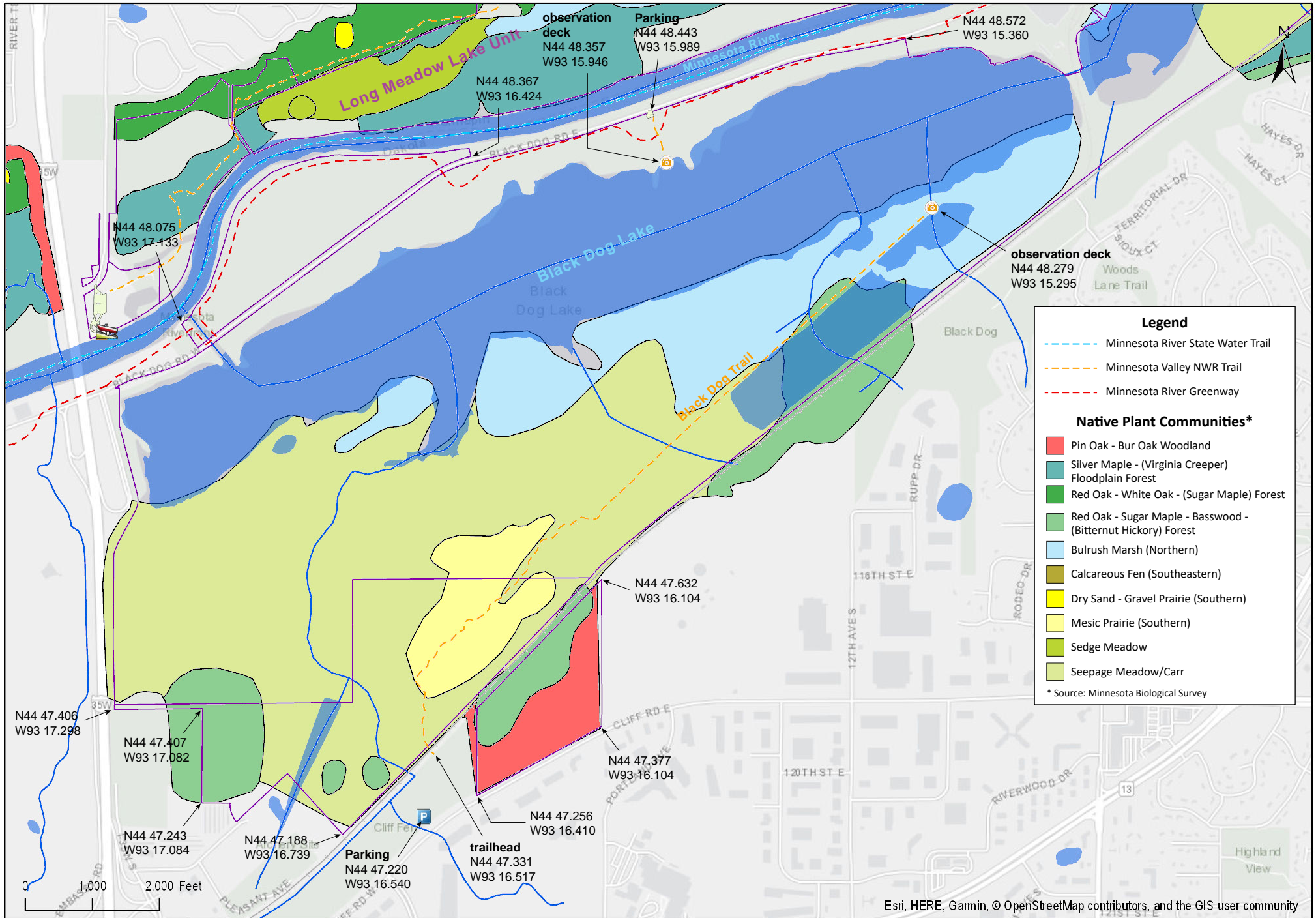
Dakota County





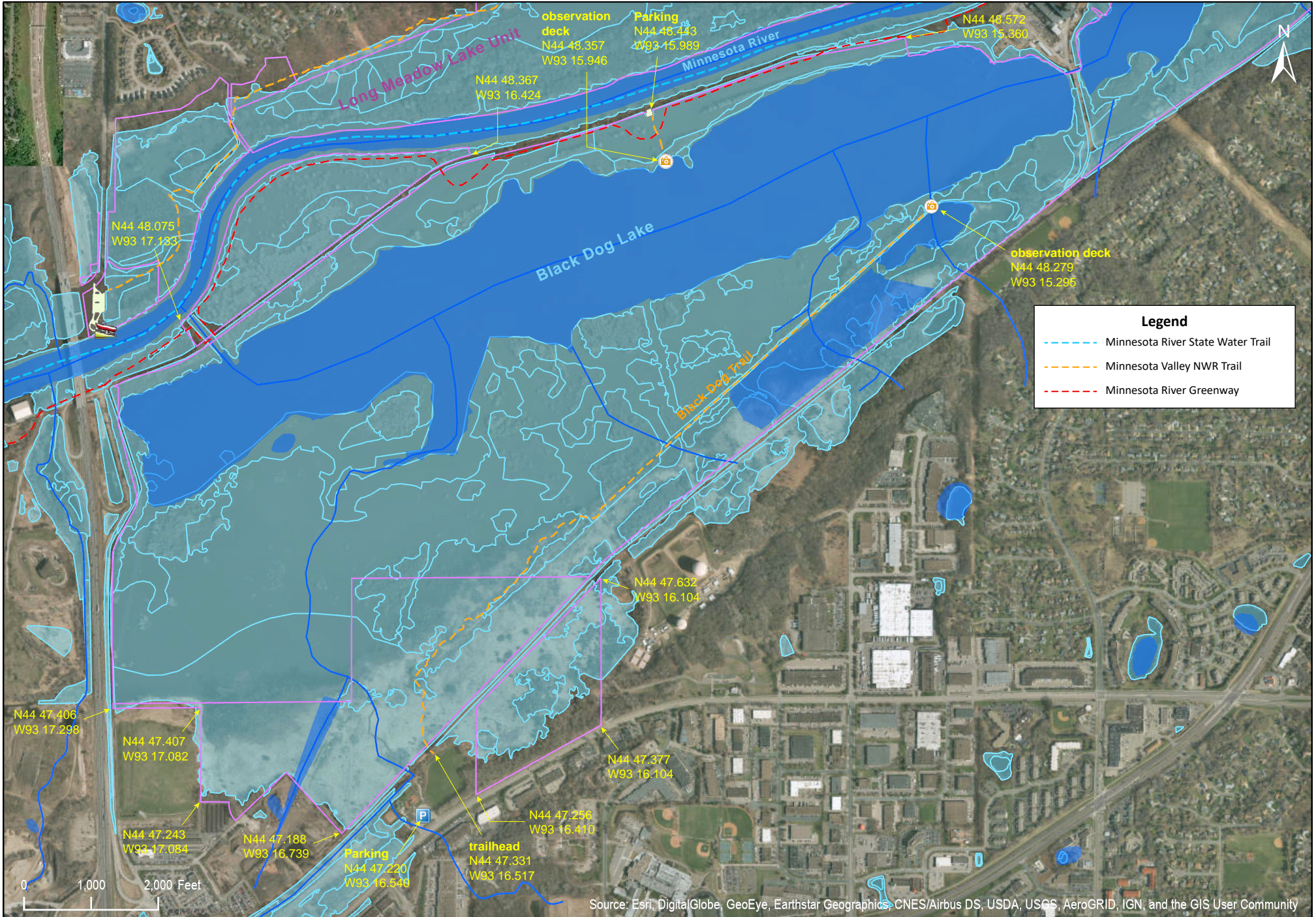
# Minnesota Valley NWR Black Dog Preserve Unit, West Section

Dakota County





# Minnesota Valley NWR Black Dog Preserve Unit, West Section



Source: Esri, DigitalGlobe, GeoEye, Earthstar Geographics, CNES/Airbus DS, USDA, USGS, AeroGRID, IGN, and the GIS User Community



# Minnesota Valley NWR Black Dog Preserve Unit, West Section

## Directions and Notes from U.S. Fish & Wildlife Service

None

## Notes from MinnesotaSeasons.com

### **Parking**

#### **Cliff Road**

Park in the Cliff Fen Park parking lot on the north side of Cliff Road.  
N44 47.220, W93 16.540

#### **West Black Dog Road**

There is a small parking area by the observation platform on the south side of West Black Dog Road.  
N44 48.443, W93 15.989

## **DISCLAIMER OF WARRANTIES AND LIMITATIONS OF LIABILITY**

MinnesotaSeasons.com, The Nature Conservancy, U.S. Department of Agriculture, Forest Service, U.S. Fish and Wildlife Service, the state of Minnesota, the Minnesota Department of Natural Resources, and their employees, make no representations or warranties, express or implied, with respect to the use of or reliance on the data provided herewith, regardless of its format or means of transmission. There are no guarantees or representations to the user as to the accuracy, currency, completeness, suitability or reliability of this data for any purpose. THE USER ACCEPTS THE DATA AND/OR SOFTWARE "AS IS" AND ASSUMES ALL RISKS ASSOCIATED WITH ITS USE.

IN NO EVENT SHALL MINNESOTASEASONS.COM, TNC, USDA-FS, USFWS, OR MNDNR BE LIABLE FOR ANY DIRECT, INDIRECT, INCIDENTAL, SPECIAL, EXEMPLARY, OR CONSEQUENTIAL DAMAGES (INCLUDING, BUT NOT LIMITED TO, PROCUREMENT OF SUBSTITUTE GOODS OR SERVICES; LOSS OF USE, DATA, OR PROFITS; OR BUSINESS INTERRUPTION) HOWEVER CAUSED AND ON ANY THEORY OF LIABILITY, WHETHER IN CONTRACT, STRICT LIABILITY, OR TORT (INCLUDING NEGLIGENCE OR OTHERS) ARISING IN ANY WAY OUT OF THE USE OF THIS DATA, EVEN IF ADVISED OF THE POSSIBILITY OF SUCH DAMAGE OR FOR ANY CLAIM BY ANY OTHER PARTY.

Your use of the data is acceptance on your part of the terms and conditions set forth herein.