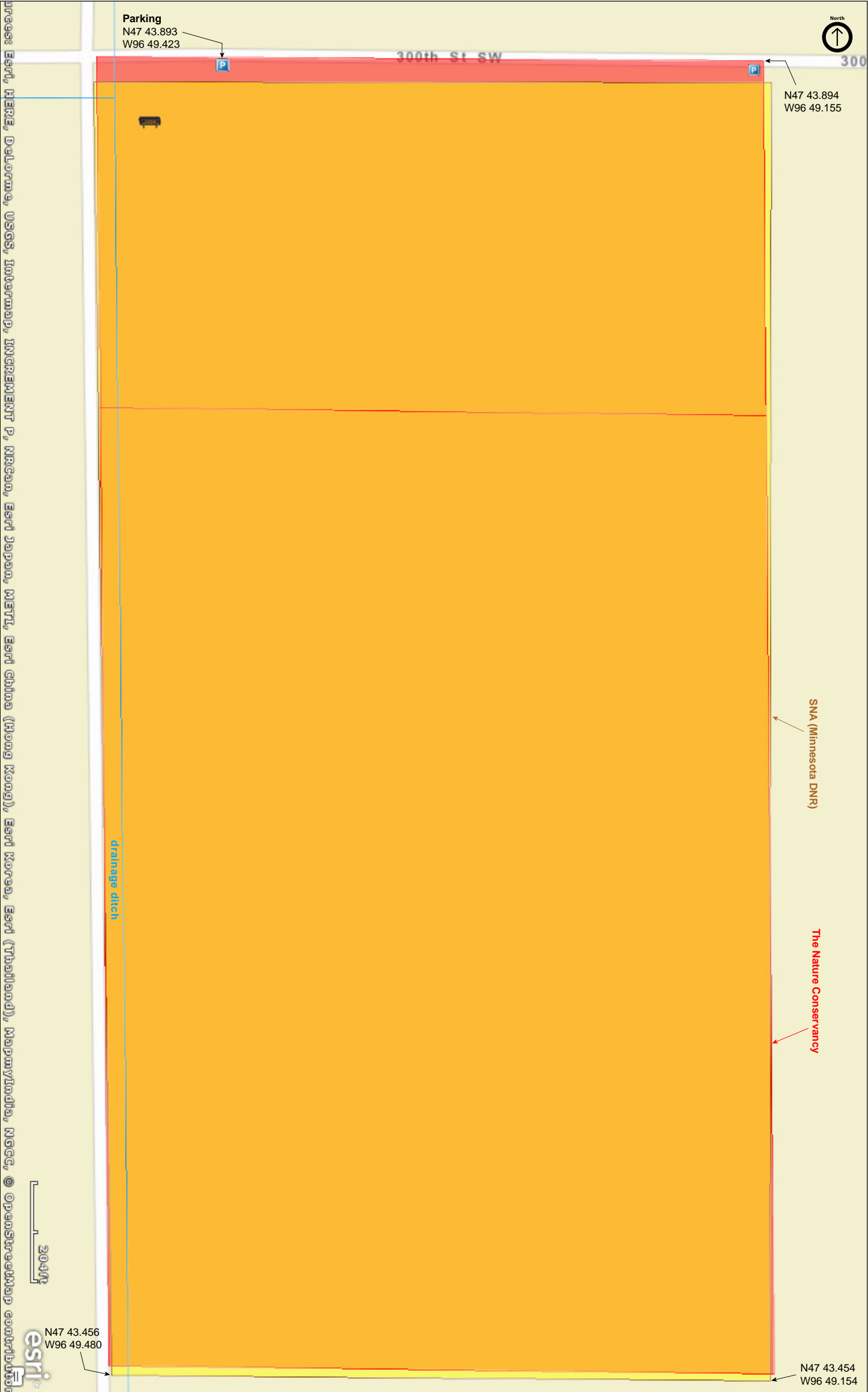




Malmberg Prairie SNA

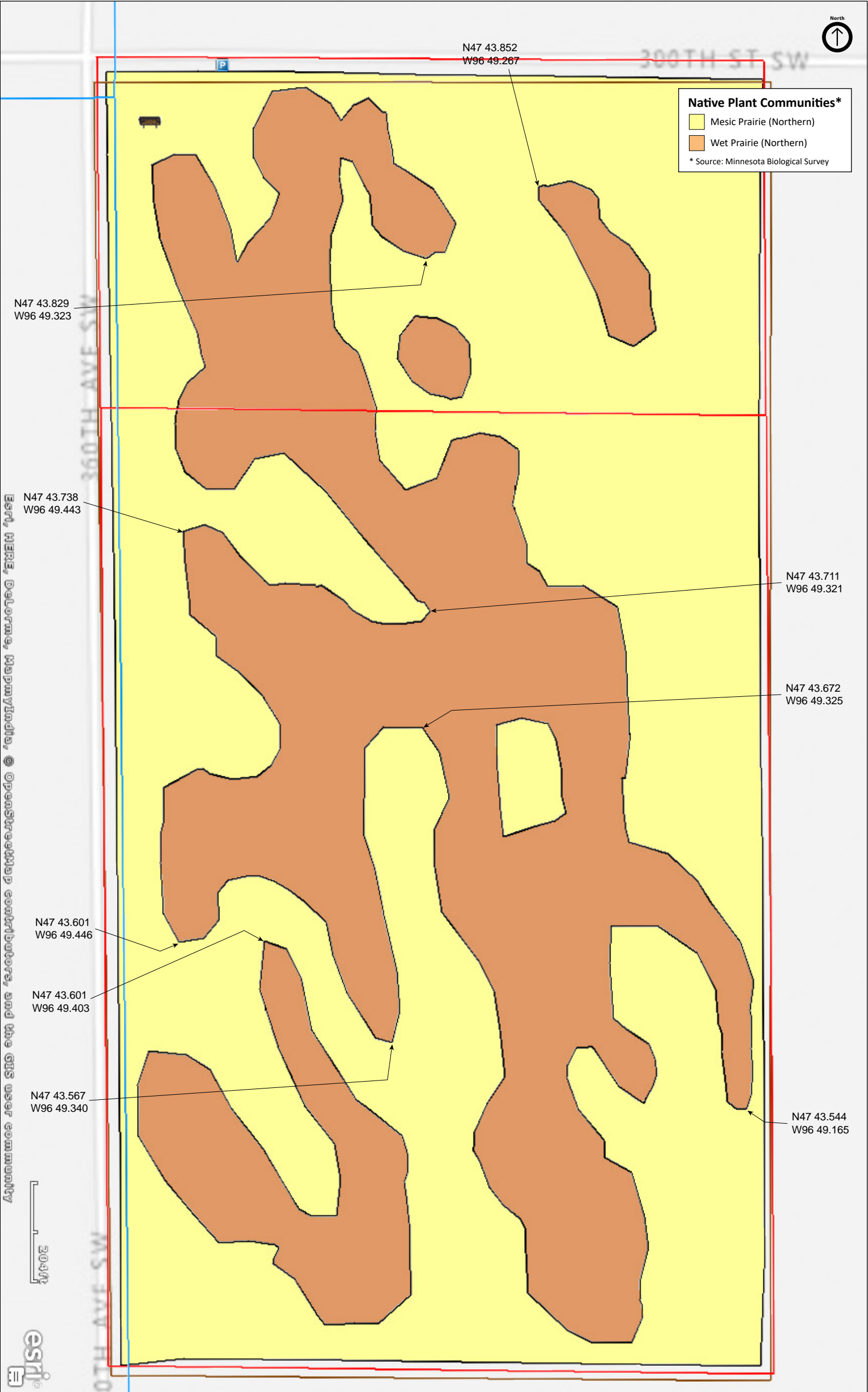
Polk County





Malmberg Prairie SNA

Polk County





Malmberg Prairie SNA

Notes from Minnesota DNR

Directions: From Crookston 9 miles W on Co Hwy 9, then 2 miles S on Co Hwy 56, then 0.25 mile E on gravel road. Park on S shoulder.

Lat/Lon: 47.731517, -96.819334

Directions and Notes from The Nature Conservancy

Southwestern From Crookston, drive south on U.S. Highway 75 for eight and one-half miles until you reach the intersection with Polk County Road 45, just outside of Eldred. Turn right on Polk County Road 45 and travel two-and-one-half miles to the intersection with County Road 56. Turn right, and drive two-and-one-half miles north. You will see The Nature Conservancy signs posted at the southwest corner of the preserve.

Or, from Crookston, drive west eight miles on County Road 9 from where it intersects with U.S. 75. Then, turn left at the intersection with County Road 56 and continue for two miles to reach the northwest corner of the preserve.

Notes from MinnesotaSeasons.com

This small prairie has never been cultivated. It is a mosaic of mesic prairie and wet prairie with small pockets of cattail marsh.

Parking

N47 43.893, W96 49.423

The Minnesota DNR Web page for this site recommends parking on the south shoulder at the northeast corner of the site. However, the road is narrow, the shoulder is nonexistent, and the drop-off is steep. The only parking spot for this SNA is the field approach on the south side of 300th Street. It is near the northwest corner of the preserve. It is deeply rutted. Once on, a vehicle without four-wheel drive may have difficulty backing off.

DISCLAIMER OF WARRANTIES AND LIMITATIONS OF LIABILITY

MinnesotaSeasons.com, The Nature Conservancy, U.S. Department of Agriculture, Forest Service, U.S. Fish and Wildlife Service, the state of Minnesota, the Minnesota Department of Natural Resources, and their employees, make no representations or warranties, express or implied, with respect to the use of or reliance on the data provided herewith, regardless of its format or means of transmission. There are no guarantees or representations to the user as to the accuracy, currency, completeness, suitability or reliability of this data for any purpose. THE USER ACCEPTS THE DATA AND/OR SOFTWARE "AS IS" AND ASSUMES ALL RISKS ASSOCIATED WITH ITS USE.

IN NO EVENT SHALL MINNESOTASEASONS.COM, TNC, USDA-FS, USFWS, OR MNDNR BE LIABLE FOR ANY DIRECT, INDIRECT, INCIDENTAL, SPECIAL, EXEMPLARY, OR CONSEQUENTIAL DAMAGES (INCLUDING, BUT NOT LIMITED TO, PROCUREMENT OF SUBSTITUTE GOODS OR SERVICES; LOSS OF USE, DATA, OR PROFITS; OR BUSINESS INTERRUPTION) HOWEVER CAUSED AND ON ANY THEORY OF LIABILITY, WHETHER IN CONTRACT, STRICT LIABILITY, OR TORT (INCLUDING NEGLIGENCE OR OTHERS) ARISING IN ANY WAY OUT OF THE USE OF THIS DATA, EVEN IF ADVISED OF THE POSSIBILITY OF SUCH DAMAGE OR FOR ANY CLAIM BY ANY OTHER PARTY.

Your use of the data is acceptance on your part of the terms and conditions set forth herein.