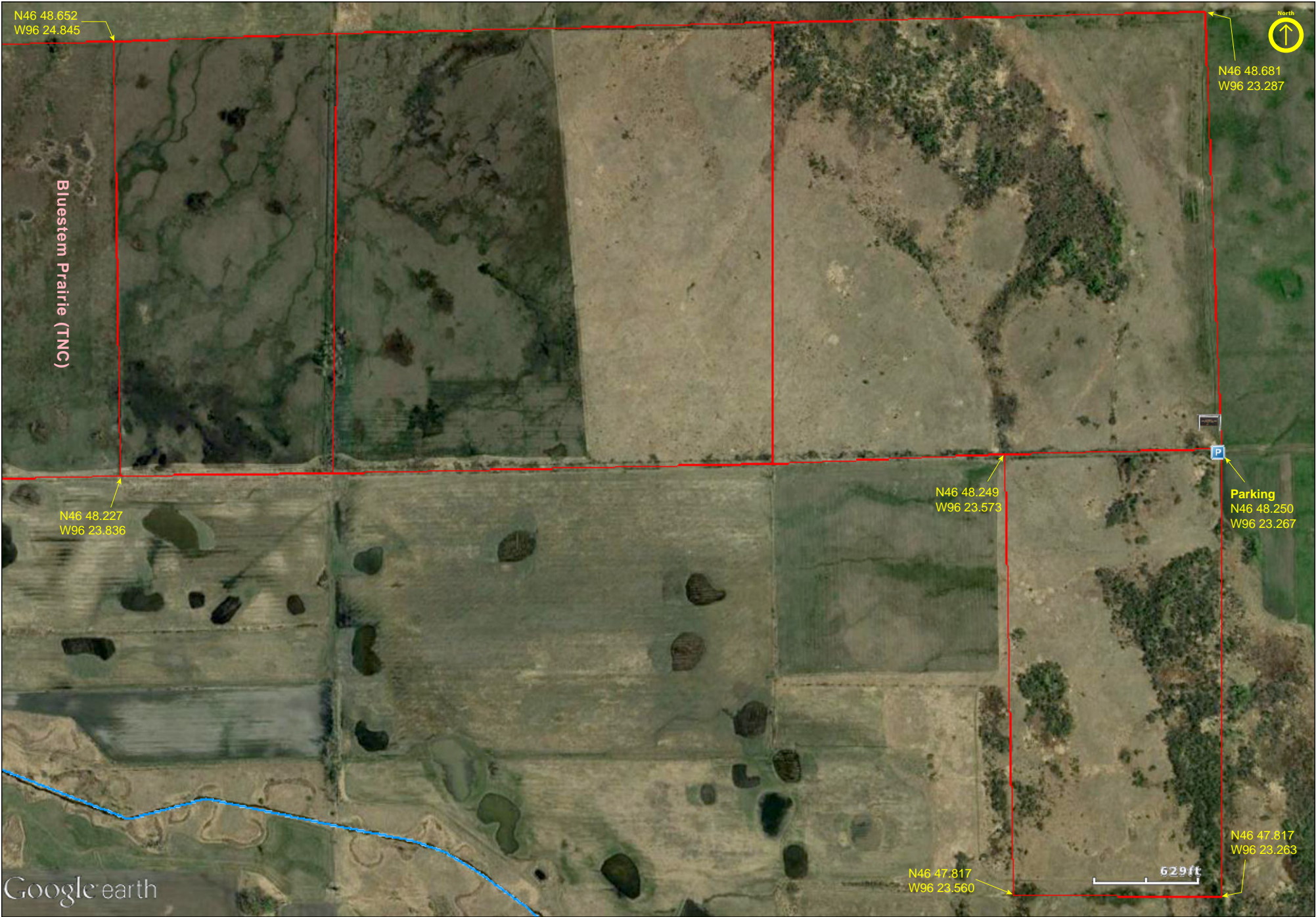


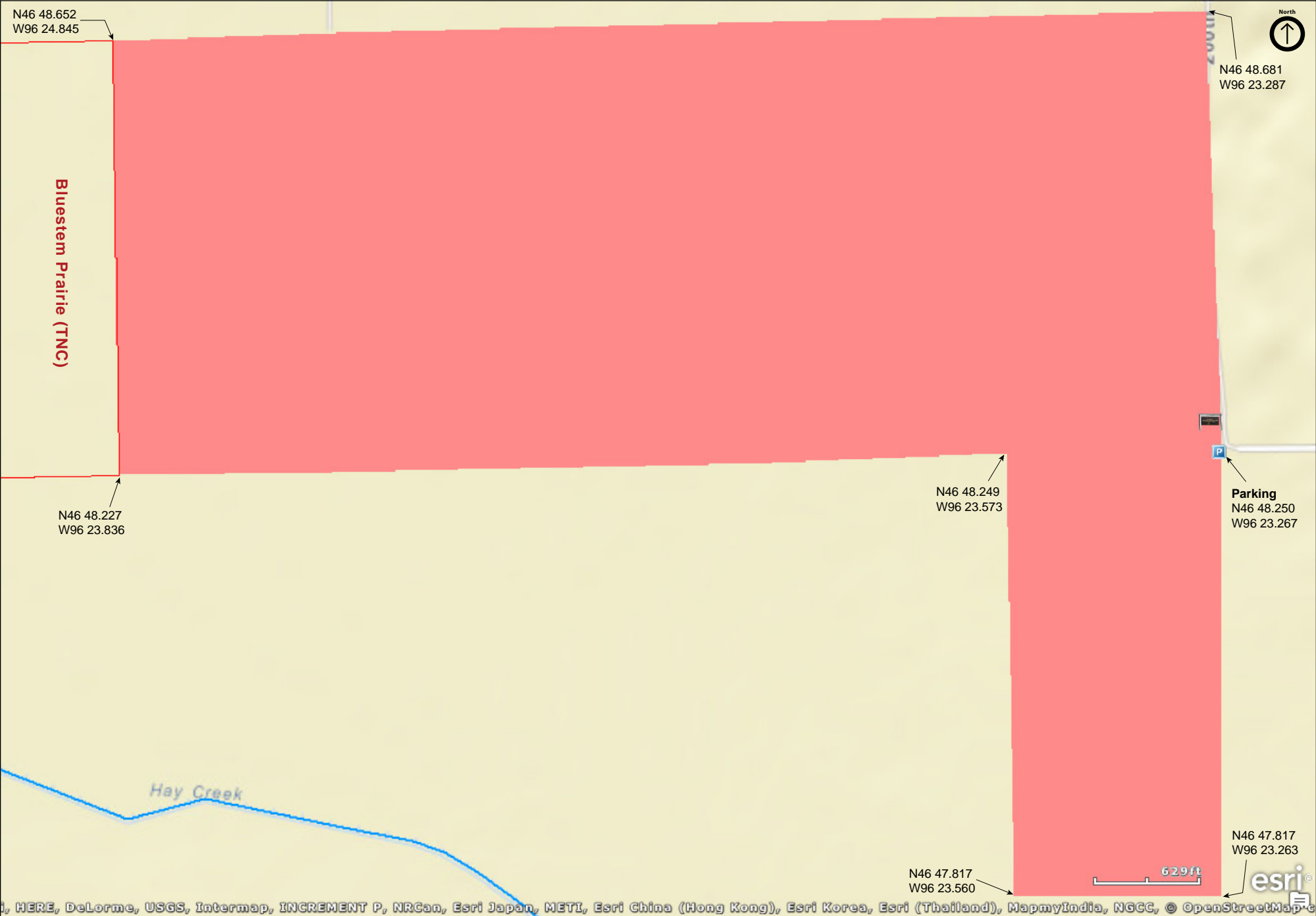
Margherita Preserve-Audubon Prairie

Clay County



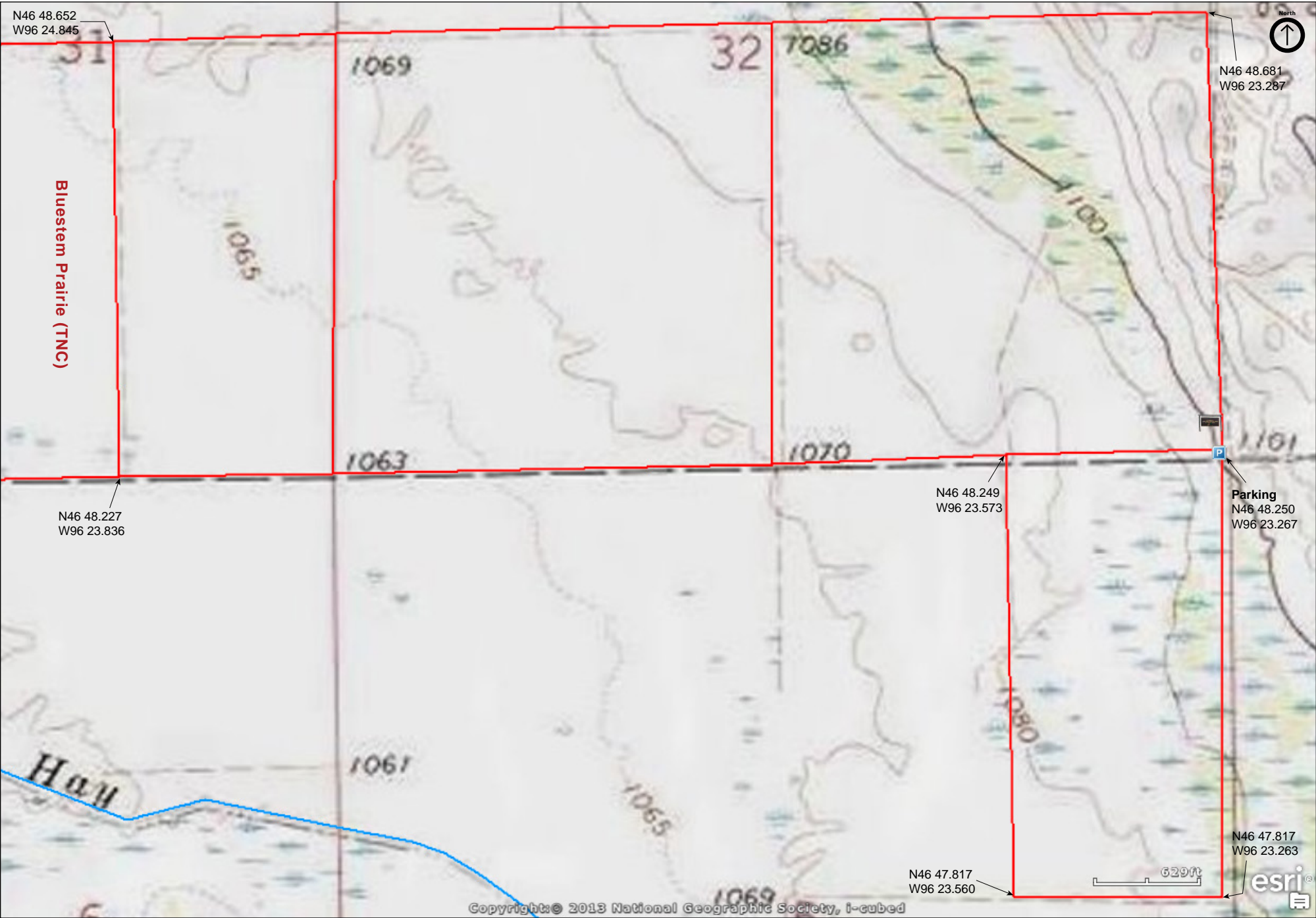
Margherita Preserve-Audubon Prairie

Clay County



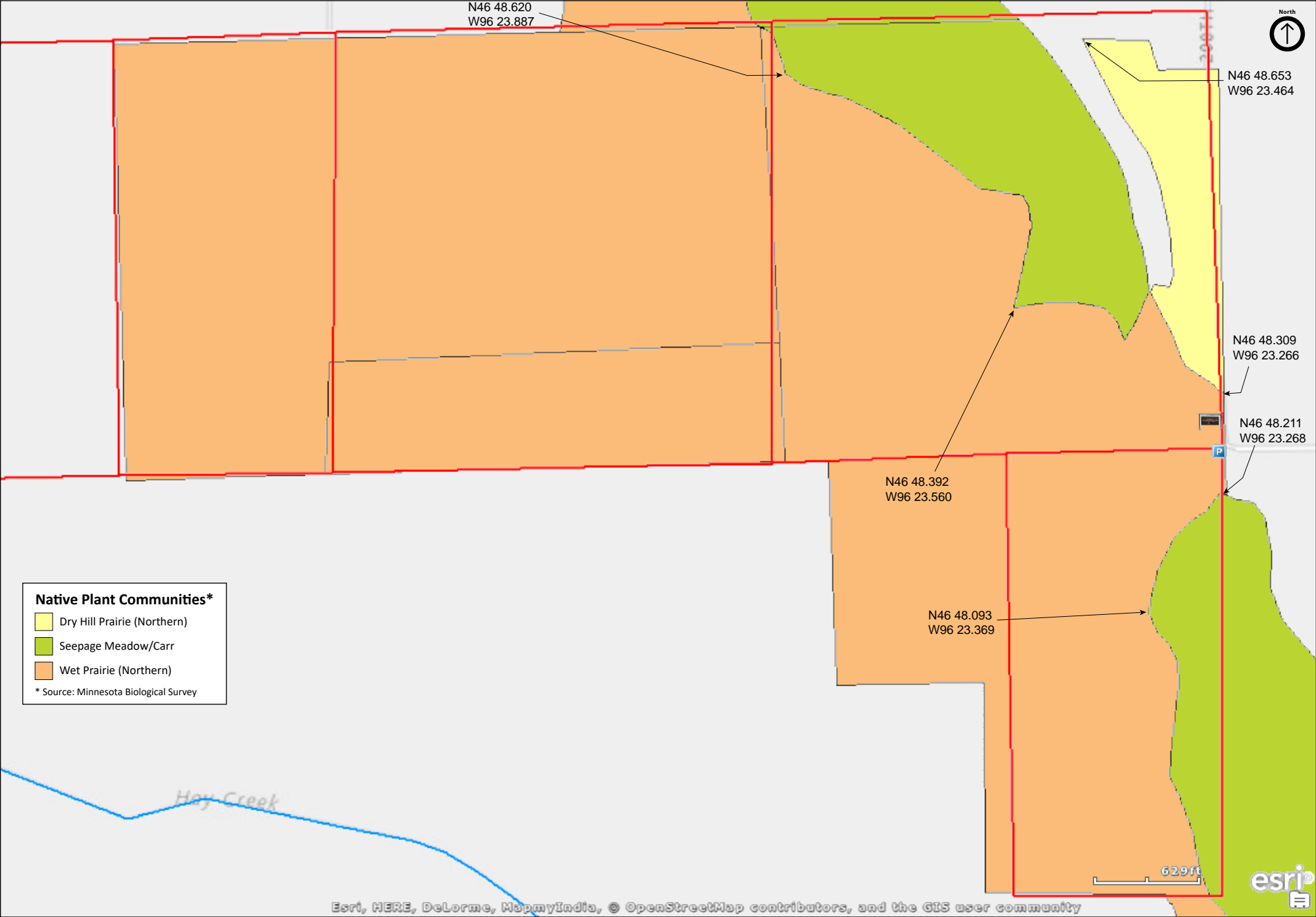
Margherita Preserve-Audubon Prairie

Clay County



Margherita Preserve-Audubon Prairie

Clay County





Margherita Preserve-Audubon Prairie

Directions and Notes from The Nature Conservancy

Southwestern from Moorhead, drive east on U.S. Highway 10 for about 25 miles until you reach Hawley. Turn right on County Road 31 and drive five miles south to the intersection with Township Road 119. Turn west and travel three miles to the center of the east boundary of the preserve. The last one-quarter mile of the township road is in poor driving condition.

From caragana to Russian olive, Conservancy staff have removed exotic trees from the preserve.

To help stop the spread of leafy spurge, small beetles have been released that prey upon the root reserves and leaves of this exotic plant.

Notes from MinnesotaSeasons.com

Parking

N46 48.250, W96 23.267

DISCLAIMER OF WARRANTIES AND LIMITATIONS OF LIABILITY

MinnesotaSeasons.com, The Nature Conservancy, U.S. Department of Agriculture, Forest Service, U.S. Fish and Wildlife Service, the state of Minnesota, the Minnesota Department of Natural Resources, and their employees, make no representations or warranties, express or implied, with respect to the use of or reliance on the data provided herewith, regardless of its format or means of transmission. There are no guarantees or representations to the user as to the accuracy, currency, completeness, suitability or reliability of this data for any purpose. THE USER ACCEPTS THE DATA AND/OR SOFTWARE "AS IS" AND ASSUMES ALL RISKS ASSOCIATED WITH ITS USE.

IN NO EVENT SHALL MINNESOTASEASONS.COM, TNC, USDA-FS, USFWS, OR MNDNR BE LIABLE FOR ANY DIRECT, INDIRECT, INCIDENTAL, SPECIAL, EXEMPLARY, OR CONSEQUENTIAL DAMAGES (INCLUDING, BUT NOT LIMITED TO, PROCUREMENT OF SUBSTITUTE GOODS OR SERVICES; LOSS OF USE, DATA, OR PROFITS; OR BUSINESS INTERRUPTION) HOWEVER CAUSED AND ON ANY THEORY OF LIABILITY, WHETHER IN CONTRACT, STRICT LIABILITY, OR TORT (INCLUDING NEGLIGENCE OR OTHERS) ARISING IN ANY WAY OUT OF THE USE OF THIS DATA, EVEN IF ADVISED OF THE POSSIBILITY OF SUCH DAMAGE OR FOR ANY CLAIM BY ANY OTHER PARTY.

Your use of the data is acceptance on your part of the terms and conditions set forth herein.