

Miller Prairie East Unit

Traverse County



Miller Prairie East Unit

Traverse County



Miller Prairie East Unit

Traverse County

N45 46.014
W96 17.331

N45 46.014
W96 17.107

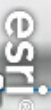


drainage ditch

N45 45.575
W96 17.331

Parking
N45 45.580
W96 17.109

Copyright © 2013 National Geographic Society, Inc.



Miller Prairie East Unit


Traverse County

N45 46.014
W96 17.331

N45 46.014
W96 17.107



Native Plant Communities*

 Prairie Wetland Complex

* Source: Minnesota Biological Survey

drainage ditch

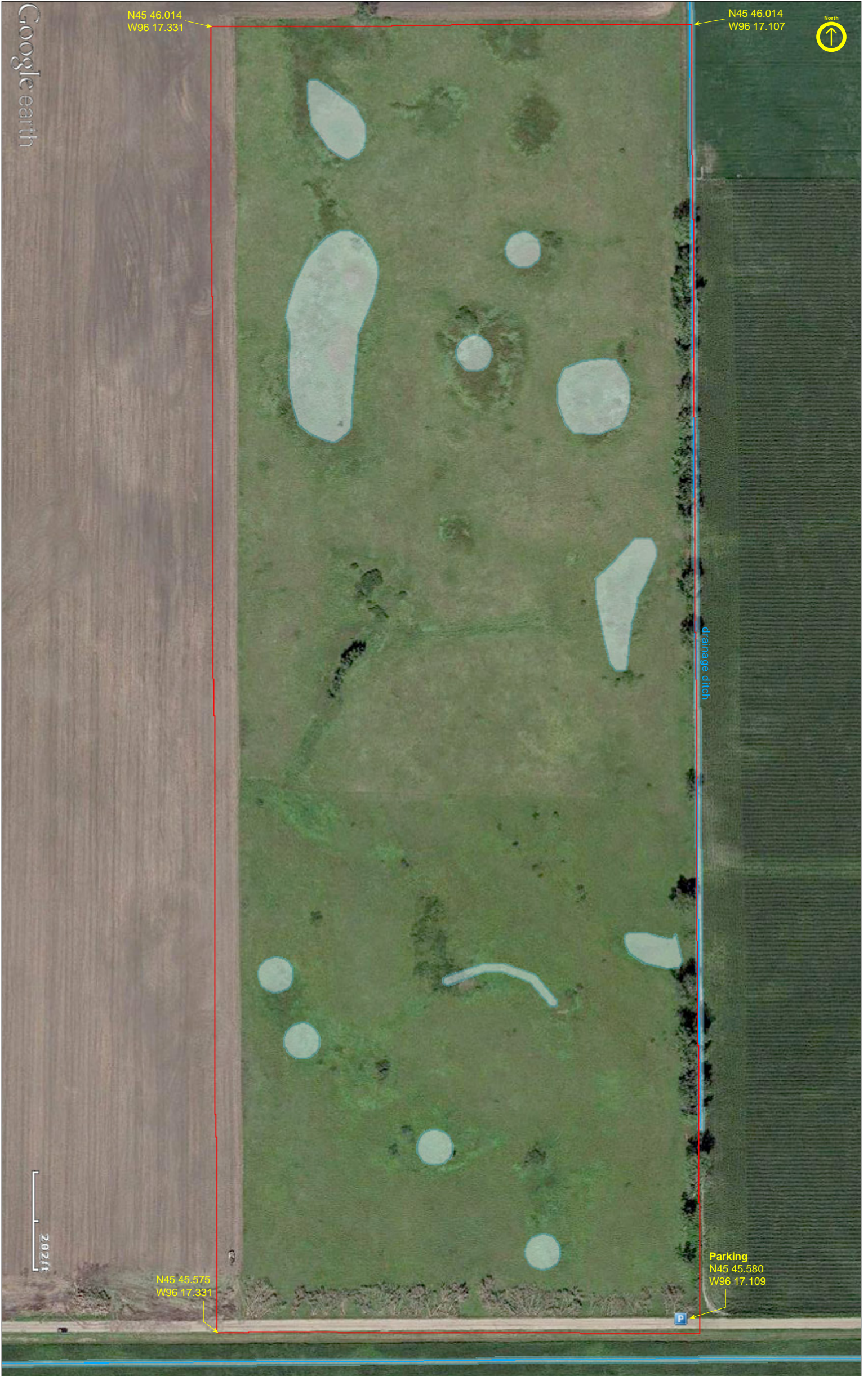
Parking
N45 45.580
W96 17.109

N45 45.575
W96 17.331

620TH ST

ESRI, HERE, DeLorme, MapmyIndia, © OpenStreetMap contributors, and the GIS user community





Google earth

N45 46.014
W96 17.331

N45 46.014
W96 17.107



drainage ditch

202ft

N45 45.575
W96 17.331

Parking
N45 45.580
W96 17.109



Miller Prairie East Unit

Directions and Notes from The Nature Conservancy

Miller Prairie consists of two parcels of land that are about 1.5 miles apart. Both pieces of land were donated in 1999 to the Conservancy by the Miller family.

Location

From Wheaton, drive six miles east of town on highway 27. Turn right (south) on county road 13. Drive for two miles on county road 13 and then turn left (east) on an unmarked gravel road. Continue on the township road for one mile. You will now be at the northwest corner of the western unit of the preserve. To get to the eastern unit from here, go south 1 mile and then turn left (east). Continue for slightly more than two miles on this township road. The eastern unit is located one-fourth a mile east of County Road 15.

The eastern unit can also be accessed easily by driving 9 miles east of Wheaton and taking a right (south) on County Road 15 for 3 miles. Take a left (east) after 3 miles and proceed east for one-fourth mile. This will place you at the southwest corner of the eastern unit.

Use caution when driving on the gravel roads in the spring and after rain, as they can be extremely muddy and slippery.

Notes from MinnesotaSeasons.com

Parking

N45 45.580, W96 17.109

Park on the north shoulder of the road near the southeast corner of the preserve.

DISCLAIMER OF WARRANTIES AND LIMITATIONS OF LIABILITY

MinnesotaSeasons.com, The Nature Conservancy, U.S. Department of Agriculture, Forest Service, U.S. Fish and Wildlife Service, the state of Minnesota, the Minnesota Department of Natural Resources, and their employees, make no representations or warranties, express or implied, with respect to the use of or reliance on the data provided herewith, regardless of its format or means of transmission. There are no guarantees or representations to the user as to the accuracy, currency, completeness, suitability or reliability of this data for any purpose. THE USER ACCEPTS THE DATA AND/OR SOFTWARE "AS IS" AND ASSUMES ALL RISKS ASSOCIATED WITH ITS USE.

IN NO EVENT SHALL MINNESOTASEASONS.COM, TNC, USDA-FS, USFWS, OR MNDNR BE LIABLE FOR ANY DIRECT, INDIRECT, INCIDENTAL, SPECIAL, EXEMPLARY, OR CONSEQUENTIAL DAMAGES (INCLUDING, BUT NOT LIMITED TO, PROCUREMENT OF SUBSTITUTE GOODS OR SERVICES; LOSS OF USE, DATA, OR PROFITS; OR BUSINESS INTERRUPTION) HOWEVER CAUSED AND ON ANY THEORY OF LIABILITY, WHETHER IN CONTRACT, STRICT LIABILITY, OR TORT (INCLUDING NEGLIGENCE OR OTHERS) ARISING IN ANY WAY OUT OF THE USE OF THIS DATA, EVEN IF ADVISED OF THE POSSIBILITY OF SUCH DAMAGE OR FOR ANY CLAIM BY ANY OTHER PARTY.

Your use of the data is acceptance on your part of the terms and conditions set forth herein.