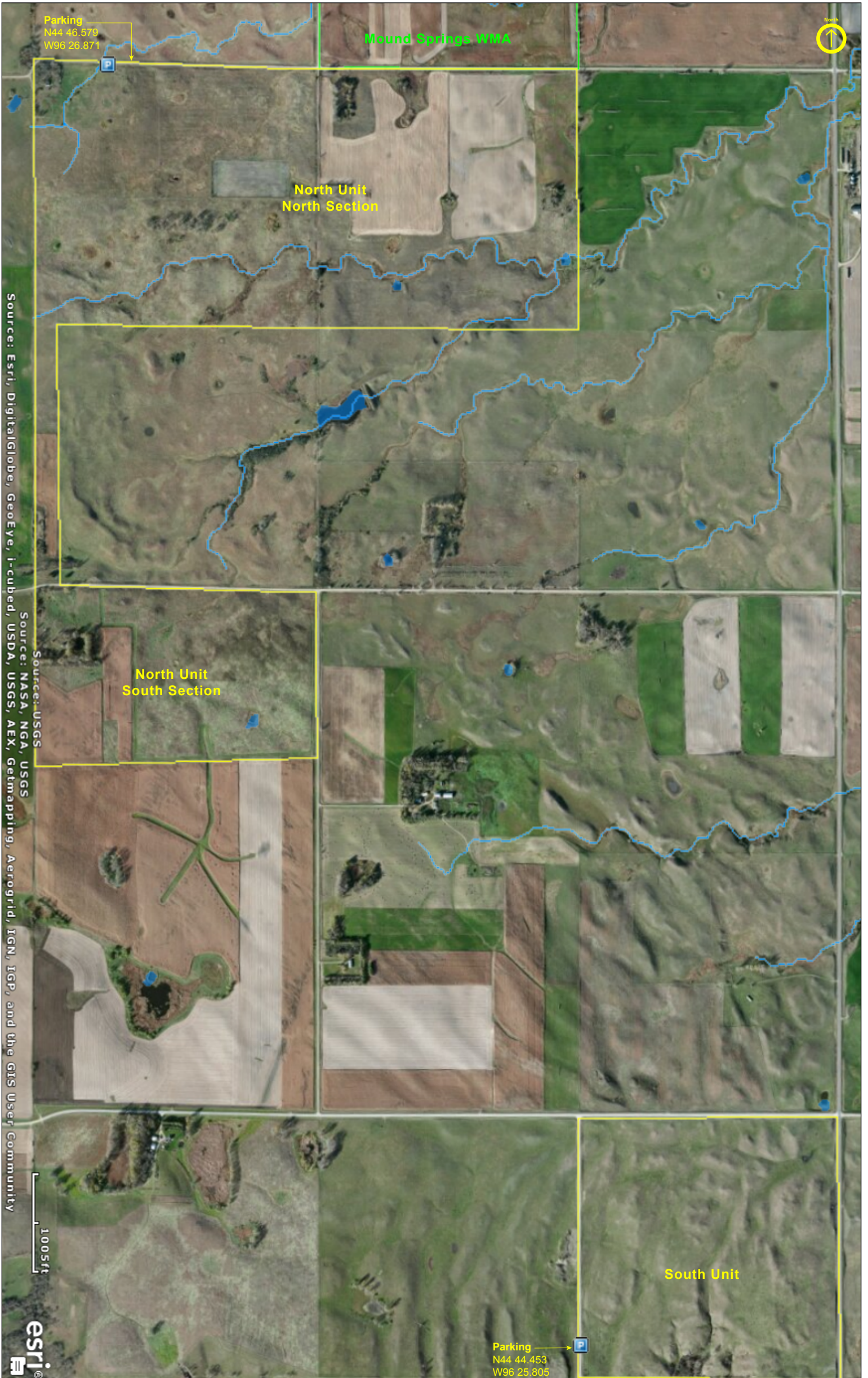


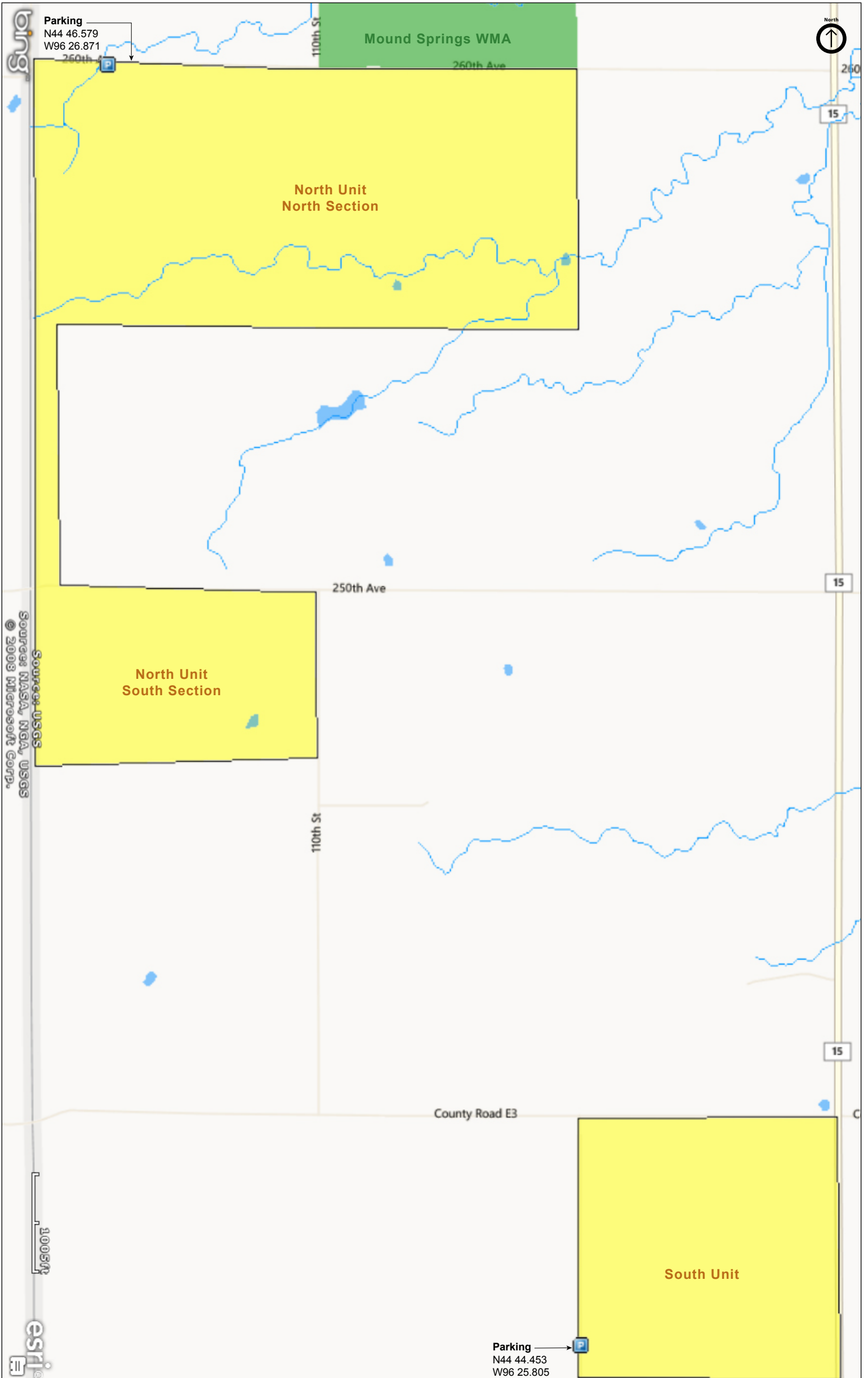
Mound Spring Prairie SNA

Yellow Medicine County



Mound Spring Prairie SNA

Yellow Medicine County



Mound Spring Prairie SNA

Directions and Notes from Minnesota DNR

1) From Gary, South Dakota 0.5 mile E on MN Co Rd 4, then 1 mile S on 110th St, then 0.4 mile W on 240th St. Park on S road shoulder.

2) From Gary, South Dakota 1.5 mile E on MN Co Rd 4, then 3 miles S on Co Rd 15, 0.5 mile W on Co Rd E3, then 0.4 mile S on 155th St. Park in pull-off on E.

This site has no maintained trails or other recreational facilities.

Mound Spring WMA is adjacent to this site.

Notes from MinnesotaSeasons.com

Parking

North Unit

N44 46.579, W96 26.871

Pull off the road onto the field access on the south side of 260th St. 0.37 mile west of 110th St.

South Unit

N44 44.453, W96 25.805

DISCLAIMER OF WARRANTIES AND LIMITATIONS OF LIABILITY

MinnesotaSeasons.com, The Nature Conservancy, U.S. Department of Agriculture, Forest Service, U.S. Fish and Wildlife Service, the state of Minnesota, the Minnesota Department of Natural Resources, and their employees, make no representations or warranties, express or implied, with respect to the use of or reliance on the data provided herewith, regardless of its format or means of transmission. There are no guarantees or representations to the user as to the accuracy, currency, completeness, suitability or reliability of this data for any purpose. THE USER ACCEPTS THE DATA AND/OR SOFTWARE "AS IS" AND ASSUMES ALL RISKS ASSOCIATED WITH ITS USE.

IN NO EVENT SHALL MINNESOTASEASONS.COM, TNC, USDA-FS, USFWS, OR MNDNR BE LIABLE FOR ANY DIRECT, INDIRECT, INCIDENTAL, SPECIAL, EXEMPLARY, OR CONSEQUENTIAL DAMAGES (INCLUDING, BUT NOT LIMITED TO, PROCUREMENT OF SUBSTITUTE GOODS OR SERVICES; LOSS OF USE, DATA, OR PROFITS; OR BUSINESS INTERRUPTION) HOWEVER CAUSED AND ON ANY THEORY OF LIABILITY, WHETHER IN CONTRACT, STRICT LIABILITY, OR TORT (INCLUDING NEGLIGENCE OR OTHERS) ARISING IN ANY WAY OUT OF THE USE OF THIS DATA, EVEN IF ADVISED OF THE POSSIBILITY OF SUCH DAMAGE OR FOR ANY CLAIM BY ANY OTHER PARTY.

Your use of the data is acceptance on your part of the terms and conditions set forth herein.