

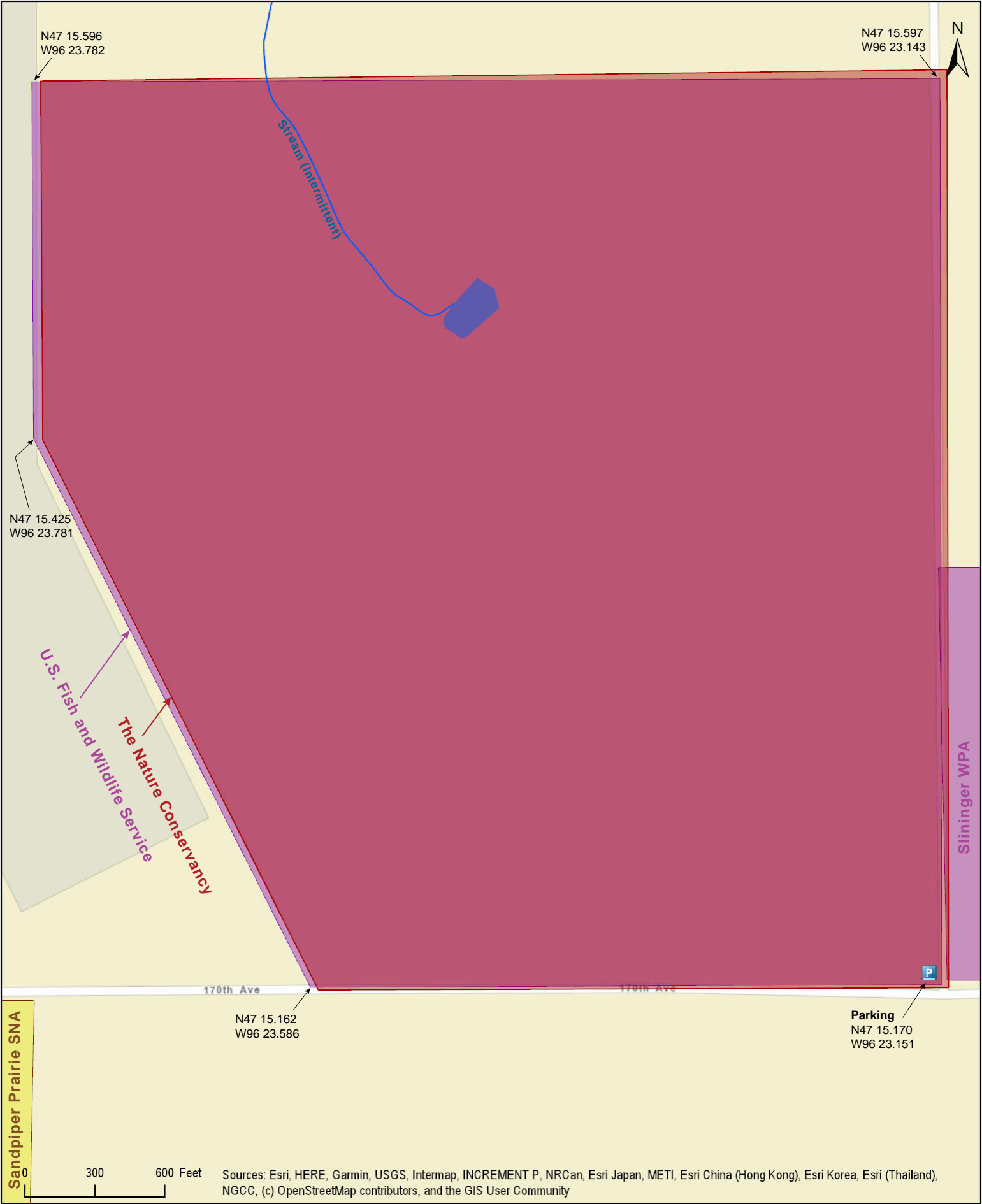
Northern Tallgrass Prairie National Wildlife Refuge  
Pavia Unit

Norman County



Northern Tallgrass Prairie National Wildlife Refuge  
Pavia Unit

Norman County





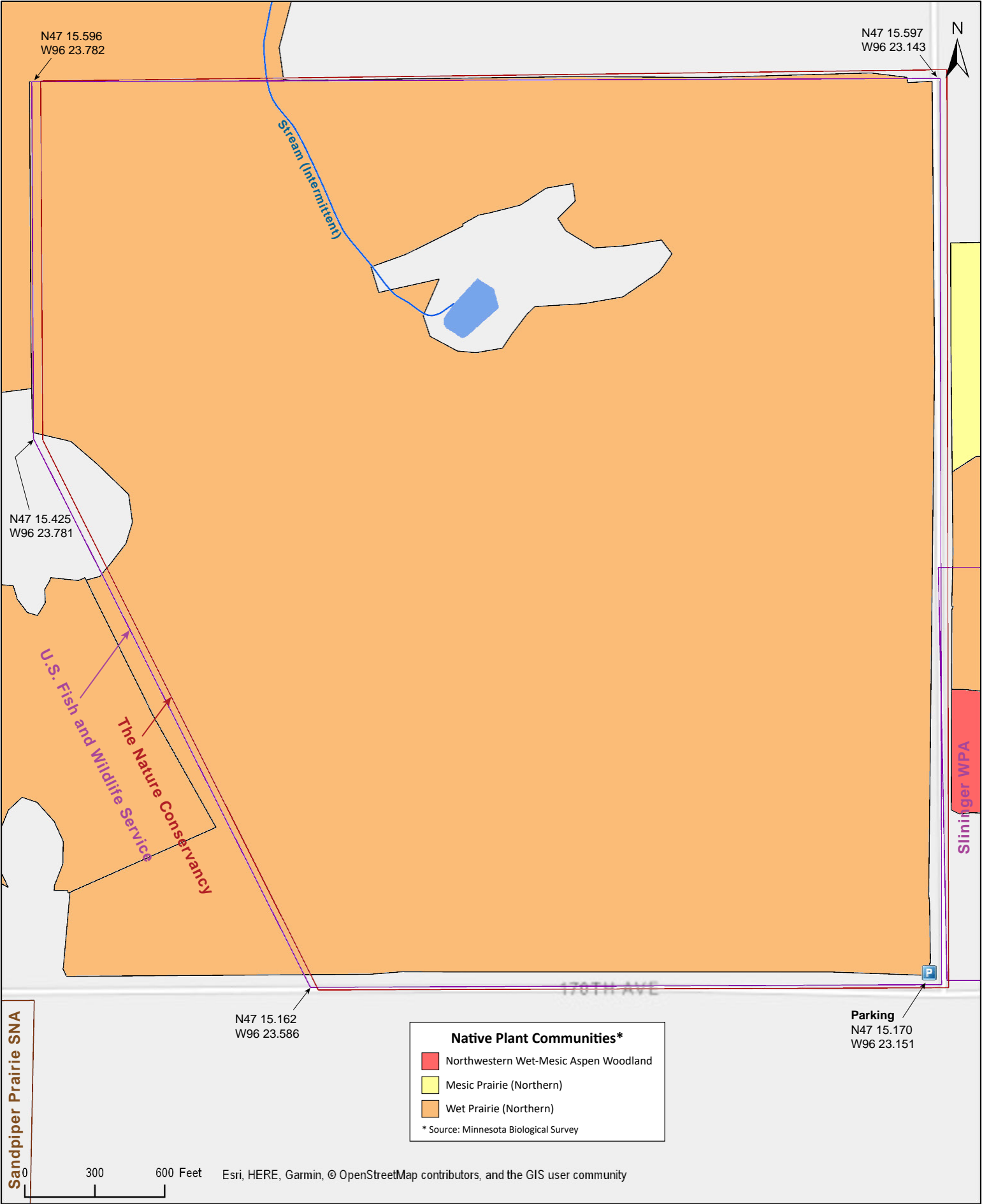
Northern Tallgrass Prairie National Wildlife Refuge  
Pavia Unit

Norman County



Northern Tallgrass Prairie National Wildlife Refuge  
Pavia Unit

Norman County

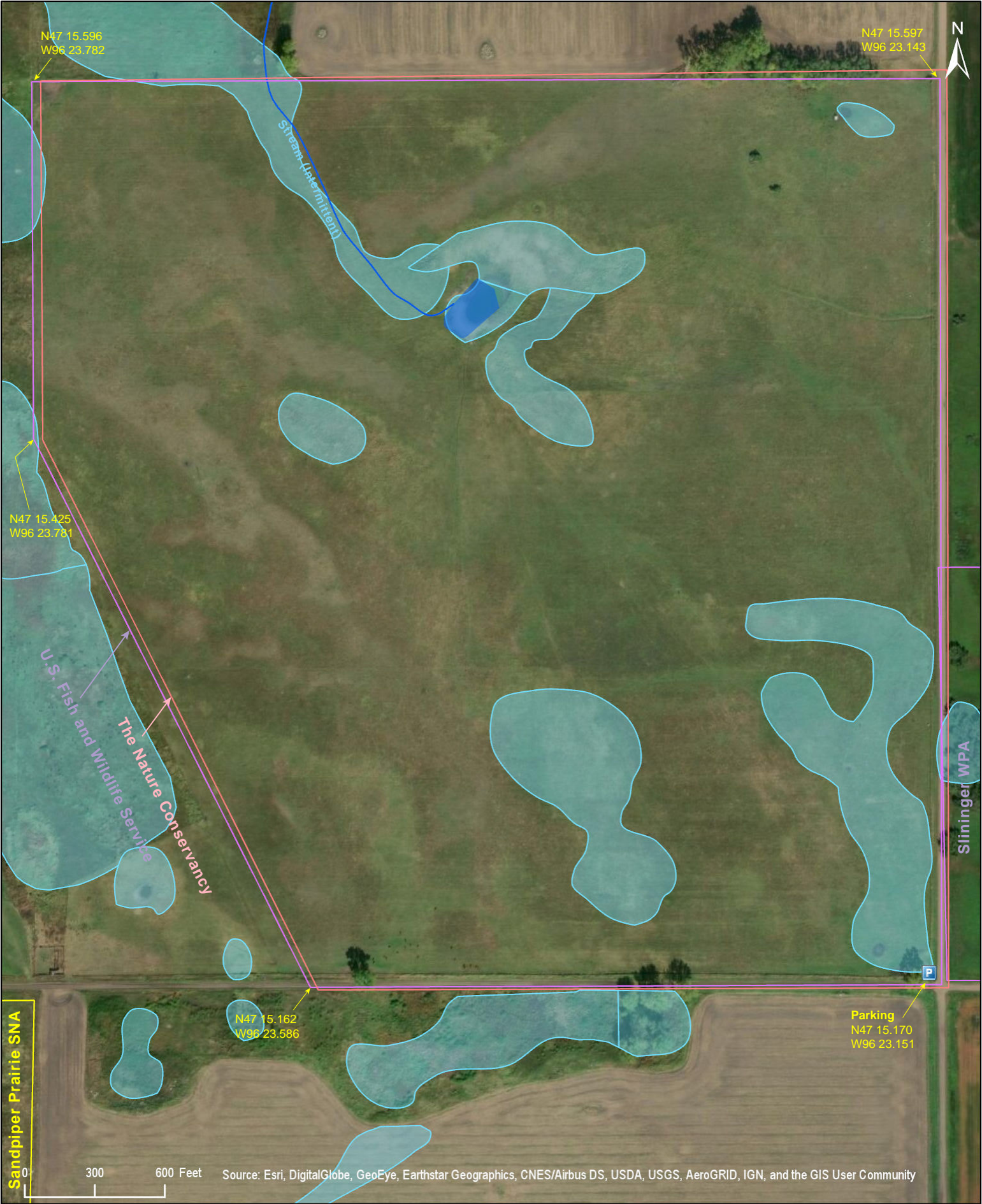




Northern Tallgrass Prairie National Wildlife Refuge  
Pavia Unit

National Wetlands Inventory

Norman County



# Northern Tallgrass Prairie National Wildlife Refuge Pavia Unit

## **Directions and Notes from U.S. Fish and Wildlife Service**

The U.S. Fish and Wildlife Service does not provide directions or any other information on any of the units of the Northern Tallgrass Prairie National Wildlife Refuge. It does not include on its Website those sites managed by The Nature Conservancy, including the Pavia Unit.

## **Notes from MinnesotaSeasons.com**

### **Parking**

N47 15.170, W96 23.151

## **Directions and Notes from The Nature Conservancy**

Pavia Unit: Portions of SE ¼ of Section 28, Lake Ida Township, Norman County; 96°23'9"W 47°15'10"N (47.252831° -96.385848°)

## **DISCLAIMER OF WARRANTIES AND LIMITATIONS OF LIABILITY**

MinnesotaSeasons.com, The Nature Conservancy, U.S. Department of Agriculture, Forest Service, U.S. Fish and Wildlife Service, the state of Minnesota, the Minnesota Department of Natural Resources, and their employees, make no representations or warranties, express or implied, with respect to the use of or reliance on the data provided herewith, regardless of its format or means of transmission. There are no guarantees or representations to the user as to the accuracy, currency, completeness, suitability or reliability of this data for any purpose. THE USER ACCEPTS THE DATA AND/OR SOFTWARE "AS IS" AND ASSUMES ALL RISKS ASSOCIATED WITH ITS USE.

IN NO EVENT SHALL MINNESOTASEASONS.COM, TNC, USDA-FS, USFWS, OR MNDNR BE LIABLE FOR ANY DIRECT, INDIRECT, INCIDENTAL, SPECIAL, EXEMPLARY, OR CONSEQUENTIAL DAMAGES (INCLUDING, BUT NOT LIMITED TO, PROCUREMENT OF SUBSTITUTE GOODS OR SERVICES; LOSS OF USE, DATA, OR PROFITS; OR BUSINESS INTERRUPTION) HOWEVER CAUSED AND ON ANY THEORY OF LIABILITY, WHETHER IN CONTRACT, STRICT LIABILITY, OR TORT (INCLUDING NEGLIGENCE OR OTHERS) ARISING IN ANY WAY OUT OF THE USE OF THIS DATA, EVEN IF ADVISED OF THE POSSIBILITY OF SUCH DAMAGE OR FOR ANY CLAIM BY ANY OTHER PARTY.

Your use of the data is acceptance on your part of the terms and conditions set forth herein.