

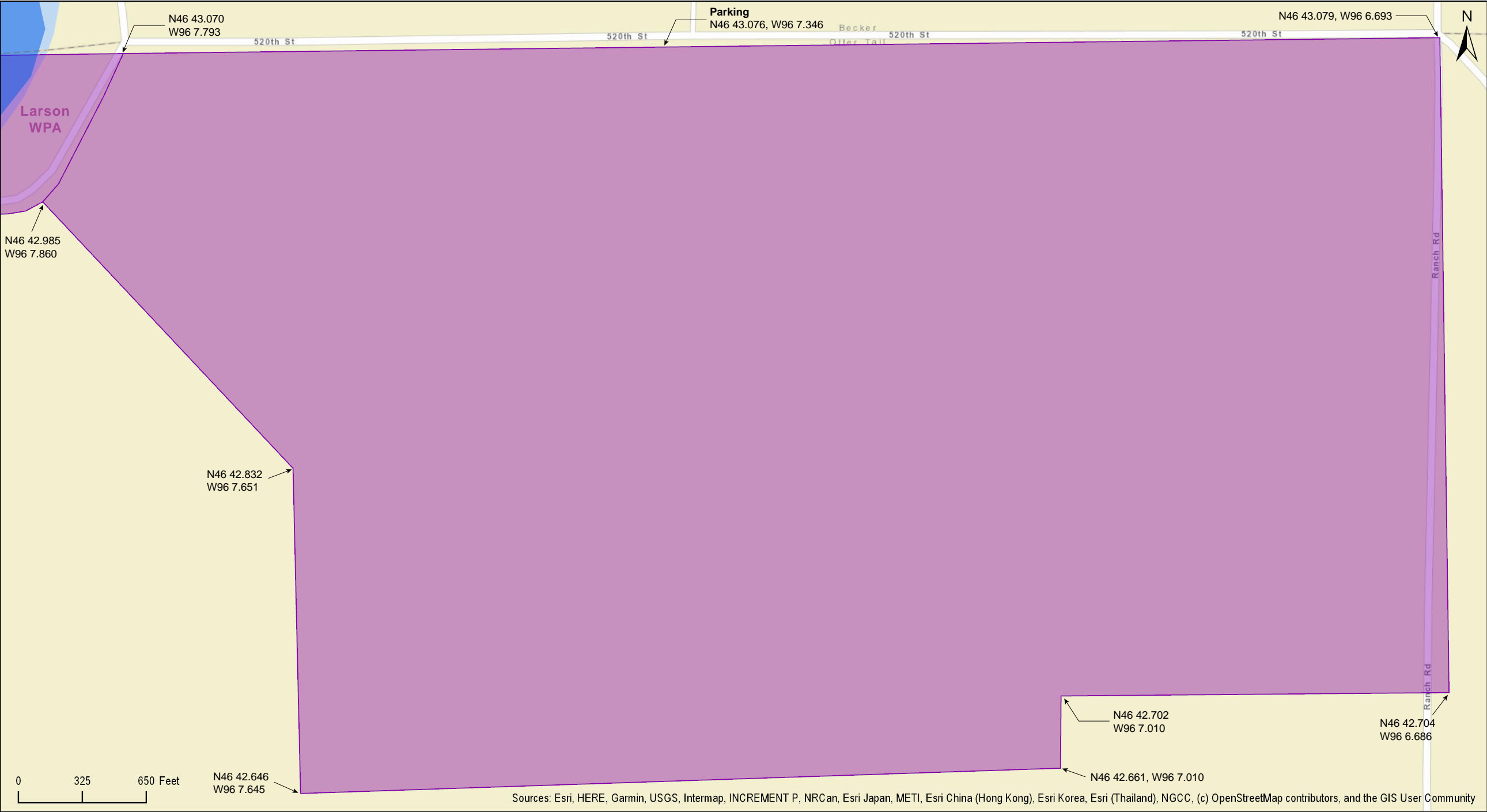
Northern Tallgrass Prairie National Wildlife Refuge
Rengstorf Unit

Otter Tail County



Northern Tallgrass Prairie National Wildlife Refuge
Rengstorf Unit

Otter Tail County



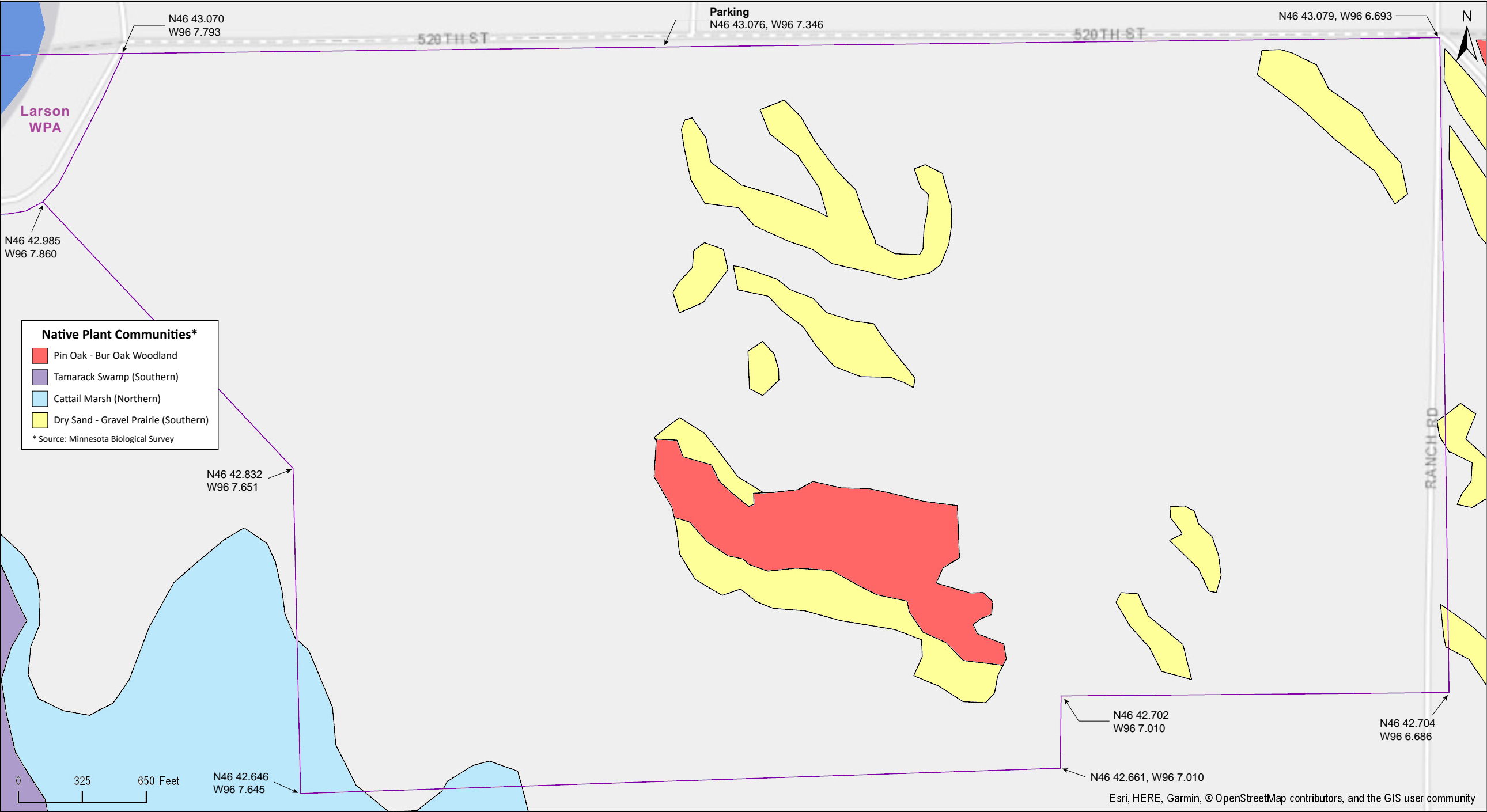
Northern Tallgrass Prairie National Wildlife Refuge
Rengstorf Unit

Otter Tail County



Northern Tallgrass Prairie National Wildlife Refuge
Rengstorf Unit

Otter Tail County



Northern Tallgrass Prairie National Wildlife Refuge
Rengstorf Unit

National Wetlands Inventory

Otter Tail County



Source: Esri, DigitalGlobe, GeoEye, Earthstar Geographics, CNES/Airbus DS, USDA, USGS, AeroGRID, IGN, and the GIS User Community

Northern Tallgrass Prairie National Wildlife Refuge

Rengstorf Unit

Directions and Notes from U.S. Fish and Wildlife Service

The U.S. Fish and Wildlife Service does not provide directions or any other information on any of the units of the Northern Tallgrass Prairie National Wildlife Refuge.

Directions, Address & Contact Info

Rengstorf, in Otter tail County, Minnesota; managed by Fergus Falls Wetland Management District, 18965 County Hwy. 82, Fergus Falls, MN 56537, 218-739-2291

Notes from MinnesotaSeasons.com

There appears to be a field access on the south side of 100th Street.

Parking

N46 43.076, W96 7.346

DISCLAIMER OF WARRANTIES AND LIMITATIONS OF LIABILITY

MinnesotaSeasons.com, The Nature Conservancy, U.S. Department of Agriculture, Forest Service, U.S. Fish and Wildlife Service, the state of Minnesota, the Minnesota Department of Natural Resources, and their employees, make no representations or warranties, express or implied, with respect to the use of or reliance on the data provided herewith, regardless of its format or means of transmission. There are no guarantees or representations to the user as to the accuracy, currency, completeness, suitability or reliability of this data for any purpose. THE USER ACCEPTS THE DATA AND/OR SOFTWARE "AS IS" AND ASSUMES ALL RISKS ASSOCIATED WITH ITS USE.

IN NO EVENT SHALL MINNESOTASEASONS.COM, TNC, USDA-FS, USFWS, OR MNDNR BE LIABLE FOR ANY DIRECT, INDIRECT, INCIDENTAL, SPECIAL, EXEMPLARY, OR CONSEQUENTIAL DAMAGES (INCLUDING, BUT NOT LIMITED TO, PROCUREMENT OF SUBSTITUTE GOODS OR SERVICES; LOSS OF USE, DATA, OR PROFITS; OR BUSINESS INTERRUPTION) HOWEVER CAUSED AND ON ANY THEORY OF LIABILITY, WHETHER IN CONTRACT, STRICT LIABILITY, OR TORT (INCLUDING NEGLIGENCE OR OTHERS) ARISING IN ANY WAY OUT OF THE USE OF THIS DATA, EVEN IF ADVISED OF THE POSSIBILITY OF SUCH DAMAGE OR FOR ANY CLAIM BY ANY OTHER PARTY.

Your use of the data is acceptance on your part of the terms and conditions set forth herein.