

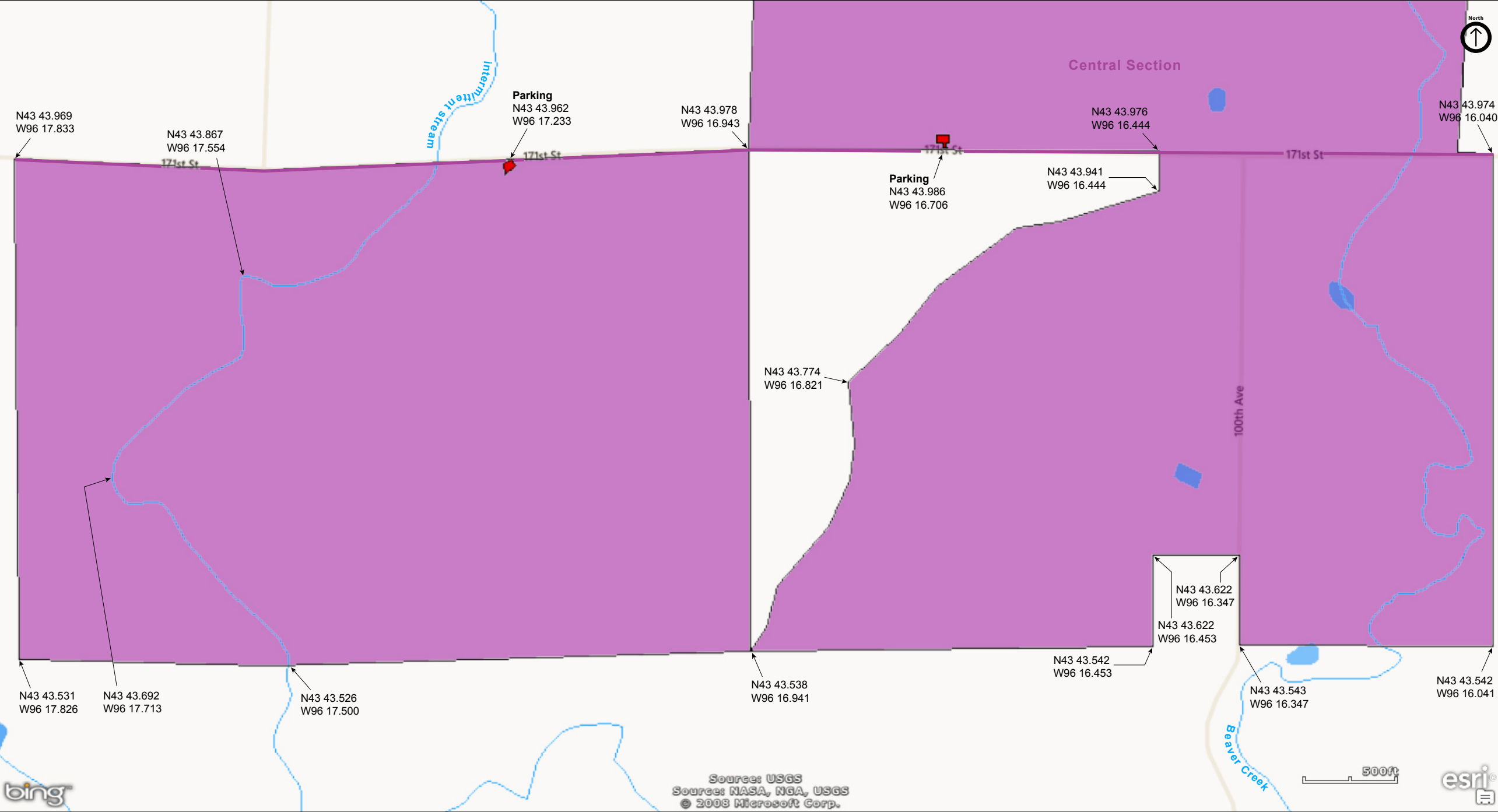
Touch the Sky Prairie  
South Section

Rock County



Touch the Sky Prairie  
South Section

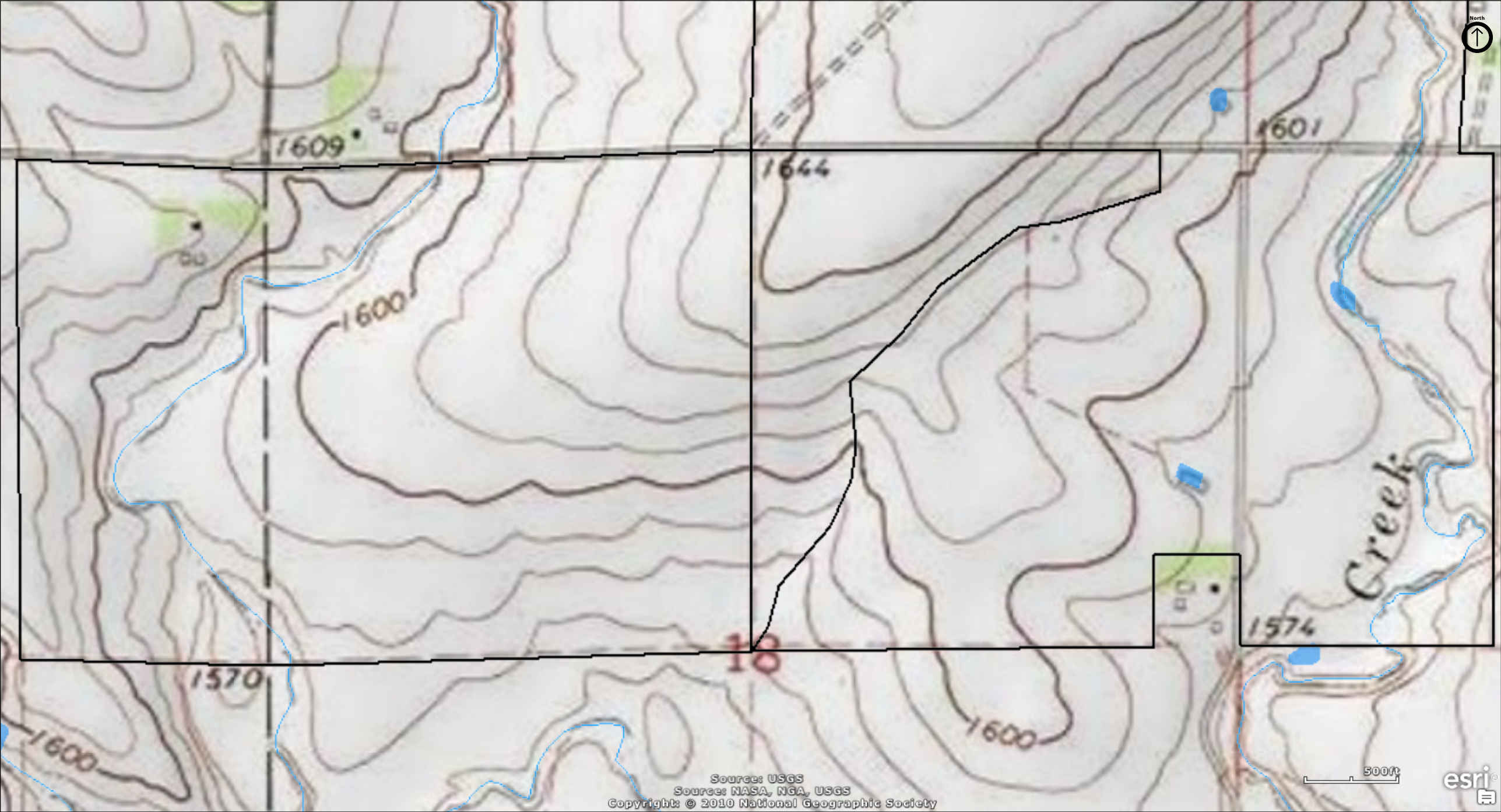
Rock County





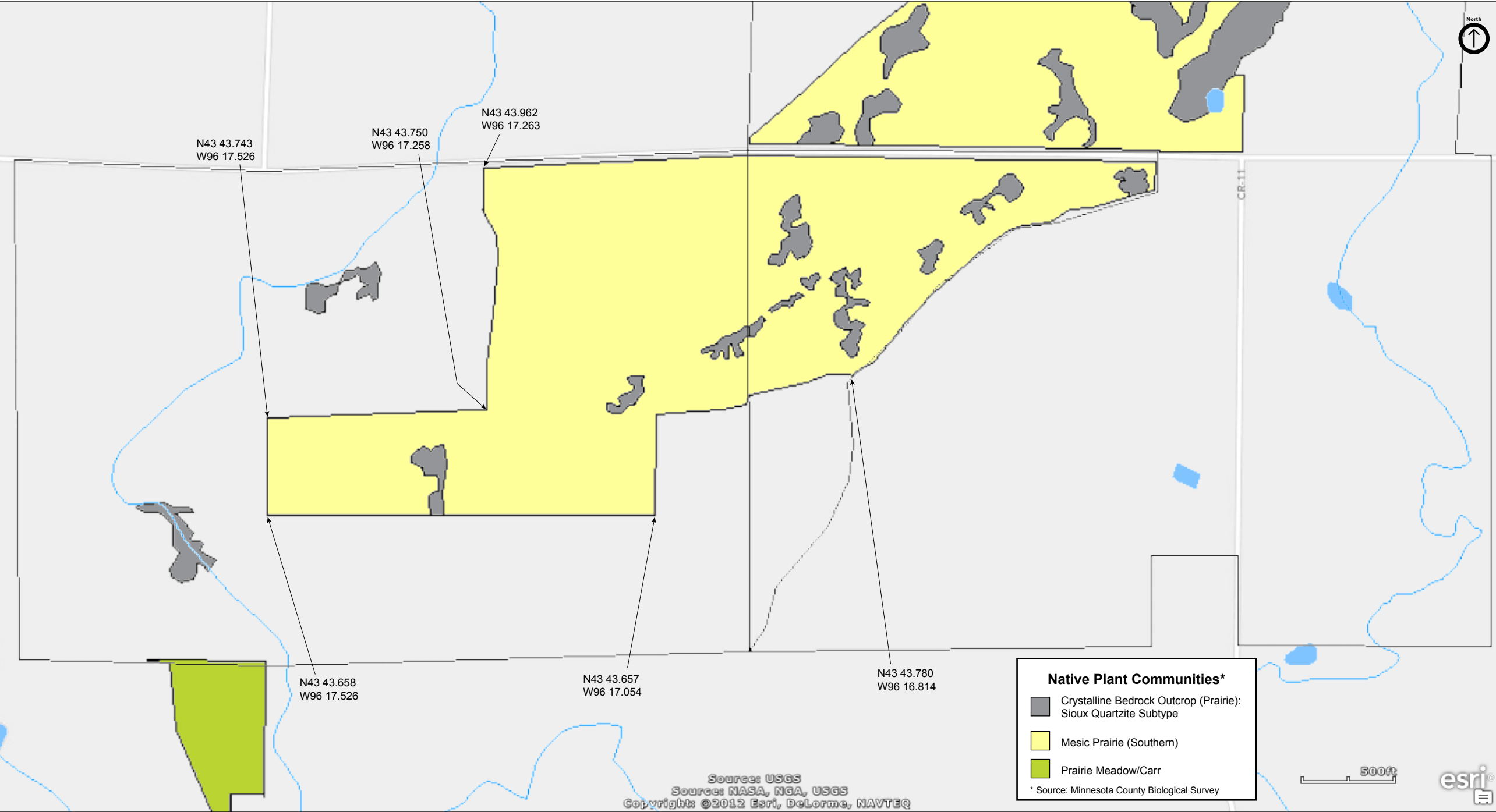
Touch the Sky Prairie  
South Section

Rock County



Touch the Sky Prairie  
South Section

Rock County



# Touch the Sky Prairie

## South Section

### **Directions and Notes from U.S. Fish & Wildlife Service**

The Northern Tallgrass Prairie National Wildlife Refuge is a mosaic of land scattered across western Minnesota and Iowa. The refuge owns eight units that are open to the public, and manages 41 additional privately-owned easements which are not open to the public.

Touch the Sky, in Rock County, Minnesota; managed by Windom Wetland Management District, 49663 County Rd. 17, Windom, MN 56101, 507-831-2220.

Hunting, wildlife viewing, interpretation, environmental education and photography are generally allowed on all Northern Tallgrass Prairie National Wildlife Refuge lands without a permit, unless otherwise posted.

### **Notes from MinnesotaSeasons.com**

#### **Parking**

North Parking  
N43 44.835, W96 16.041

Southeast Parking  
N43 43.986, W96 16.706

Southwest Parking  
N43 43.962, W96 17.233

This unit of the Northern Tallgrass Prairie NWR is open to the public.

The USFWS provides neither directions to the site nor a map of the site. They do provide cadastral data in the form of a GIS shapefile, from which this map was constructed.

### **DISCLAIMER OF WARRANTIES AND LIMITATIONS OF LIABILITY**

MinnesotaSeasons.com, The Nature Conservancy, U.S. Department of Agriculture, Forest Service, U.S. Fish and Wildlife Service, the state of Minnesota, the Minnesota Department of Natural Resources, and their employees, make no representations or warranties, express or implied, with respect to the use of or reliance on the data provided herewith, regardless of its format or means of transmission. There are no guarantees or representations to the user as to the accuracy, currency, completeness, suitability or reliability of this data for any purpose. THE USER ACCEPTS THE DATA AND/OR SOFTWARE "AS IS" AND ASSUMES ALL RISKS ASSOCIATED WITH ITS USE.

IN NO EVENT SHALL MINNESOTASEASONS.COM, TNC, USDA-FS, USFWS, OR MNDNR BE LIABLE FOR ANY DIRECT, INDIRECT, INCIDENTAL, SPECIAL, EXEMPLARY, OR CONSEQUENTIAL DAMAGES (INCLUDING, BUT NOT LIMITED TO, PROCUREMENT OF SUBSTITUTE GOODS OR SERVICES; LOSS OF USE, DATA, OR PROFITS; OR BUSINESS INTERRUPTION) HOWEVER CAUSED AND ON ANY THEORY OF LIABILITY, WHETHER IN CONTRACT, STRICT LIABILITY, OR TORT (INCLUDING NEGLIGENCE OR OTHERS) ARISING IN ANY WAY OUT OF THE USE OF THIS DATA, EVEN IF ADVISED OF THE POSSIBILITY OF SUCH DAMAGE OR FOR ANY CLAIM BY ANY OTHER PARTY.

Your use of the data is acceptance on your part of the terms and conditions set forth herein.