

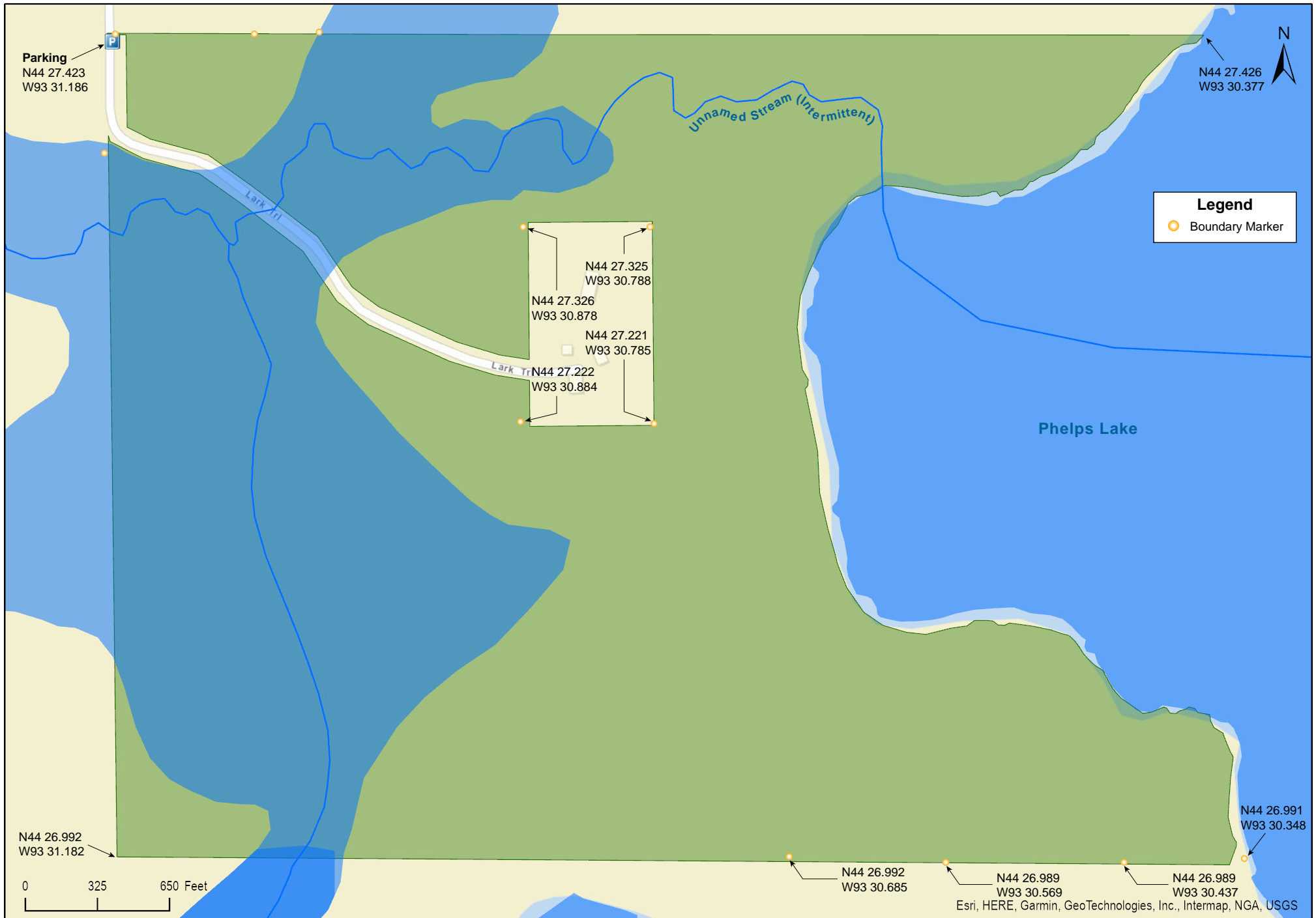
Phelps Lake WMA

Rice County



Phelps Lake WMA

Rice County

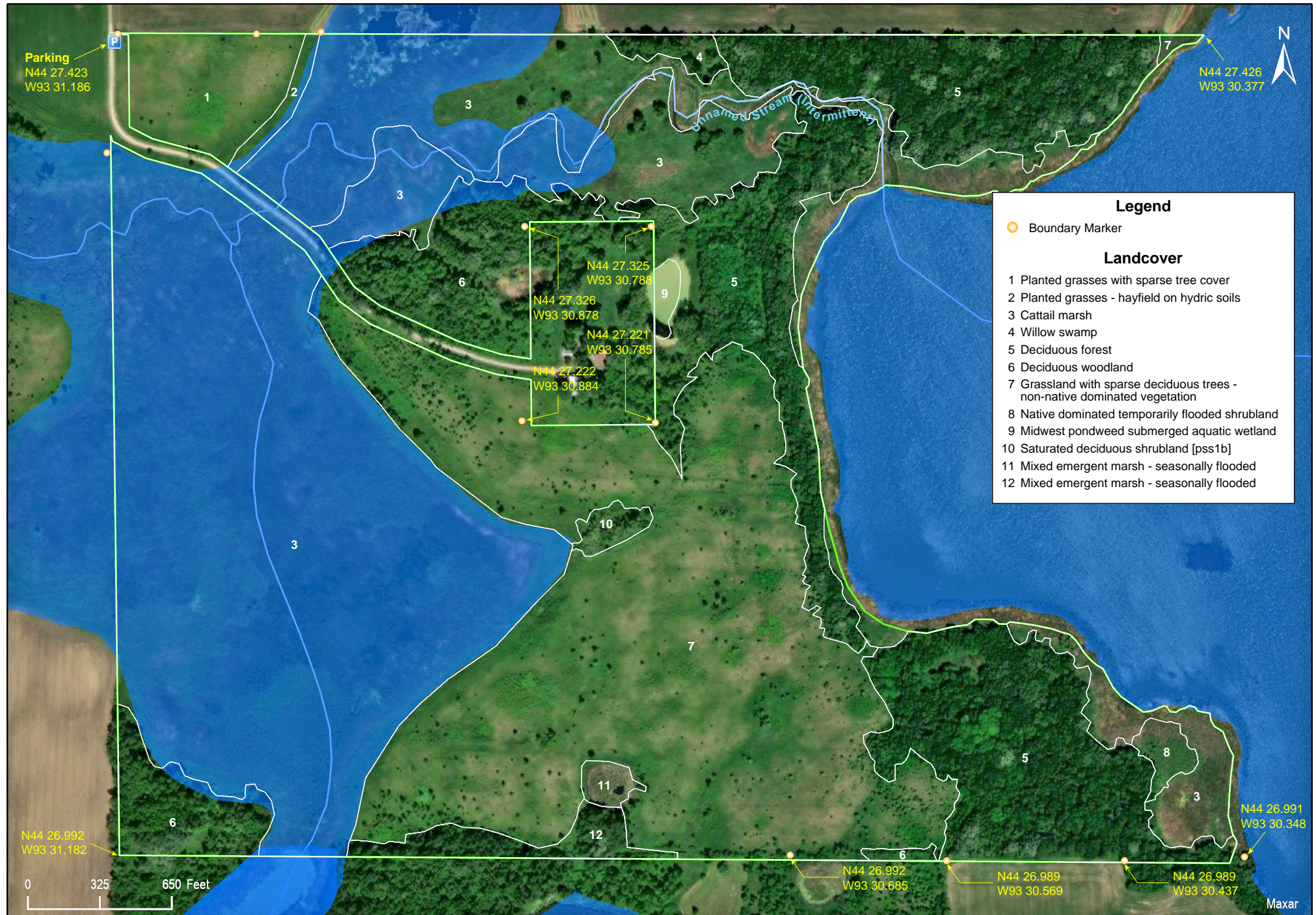


Phelps Lake WMA

Rice County







Phelps Lake WMA

Directions and Notes from Minnesota DNR

Directions

From Lonsdale travel south about 3/4 miles south along County State Aid Highway 4 to Union Lake Trail (County 59). Travel 1.5 miles west along Union Lake Trail then south along Jasper Trail about 1/4 mile to Cody Lake Trail. Take Cody Lake Trail west about 2.4 miles to Lark Trail. The wildlife area is about 0.1 mile south of the intersection of Cody Lake and Lark Trails on the east side of Lark Trail.

No developed parking area is available at this time. Visitors may use the grass pullout in the northwest corner of the unit when conditions allow. Otherwise parking is along the side of Lark Trail. Please respect our neighbors' private land. The wildlife area has shoreline along both Phelps Lake and Sand Creek but there is no vehicle access to the lake shore. A State Water Access at 11971 Cody Lake Trail provides a boat ramp and lake access to both Phelps and Cody Lakes.

Visitor Alert

Lark Trail does not provide access to the lake. This road can become muddy. Visitors are requested park near the north end of the wildlife area and walk in to avoid extensive rutting and damage to the roadway during wet spells and during spring melt.

Notes from MinnesotaSeasons.com

Parking

There is a grass pullout at the northwest corner of the WMA. If this is unusable due to wet conditions, park on the east side of Lark Ave.
N44 27.423, W93 31.186

Hiking Trails

A cleared access road leads from the private residence to Phelps Lake and along the tree belt bordering the west side of Phelps Lake. The road is not mowed but it is free of trees and shrubs.

DISCLAIMER OF WARRANTIES AND LIMITATIONS OF LIABILITY

MinnesotaSeasons.com, The Nature Conservancy, U.S. Department of Agriculture, Forest Service, U.S. Fish and Wildlife Service, the state of Minnesota, the Minnesota Department of Natural Resources, and their employees, make no representations or warranties, express or implied, with respect to the use of or reliance on the data provided herewith, regardless of its format or means of transmission. There are no guarantees or representations to the user as to the accuracy, currency, completeness, suitability or reliability of this data for any purpose. THE USER ACCEPTS THE DATA AND/OR SOFTWARE "AS IS" AND ASSUMES ALL RISKS ASSOCIATED WITH ITS USE.

IN NO EVENT SHALL MINNESOTASEASONS.COM, TNC, USDA-FS, USFWS, OR MNDNR BE LIABLE FOR ANY DIRECT, INDIRECT, INCIDENTAL, SPECIAL, EXEMPLARY, OR CONSEQUENTIAL DAMAGES (INCLUDING, BUT NOT LIMITED TO, PROCUREMENT OF SUBSTITUTE GOODS OR SERVICES; LOSS OF USE, DATA, OR PROFITS; OR BUSINESS INTERRUPTION) HOWEVER CAUSED AND ON ANY THEORY OF LIABILITY, WHETHER IN CONTRACT, STRICT LIABILITY, OR TORT (INCLUDING NEGLIGENCE OR OTHERS) ARISING IN ANY WAY OUT OF THE USE OF THIS DATA, EVEN IF ADVISED OF THE POSSIBILITY OF SUCH DAMAGE OR FOR ANY CLAIM BY ANY OTHER PARTY.

Your use of the data is acceptance on your part of the terms and conditions set forth herein.