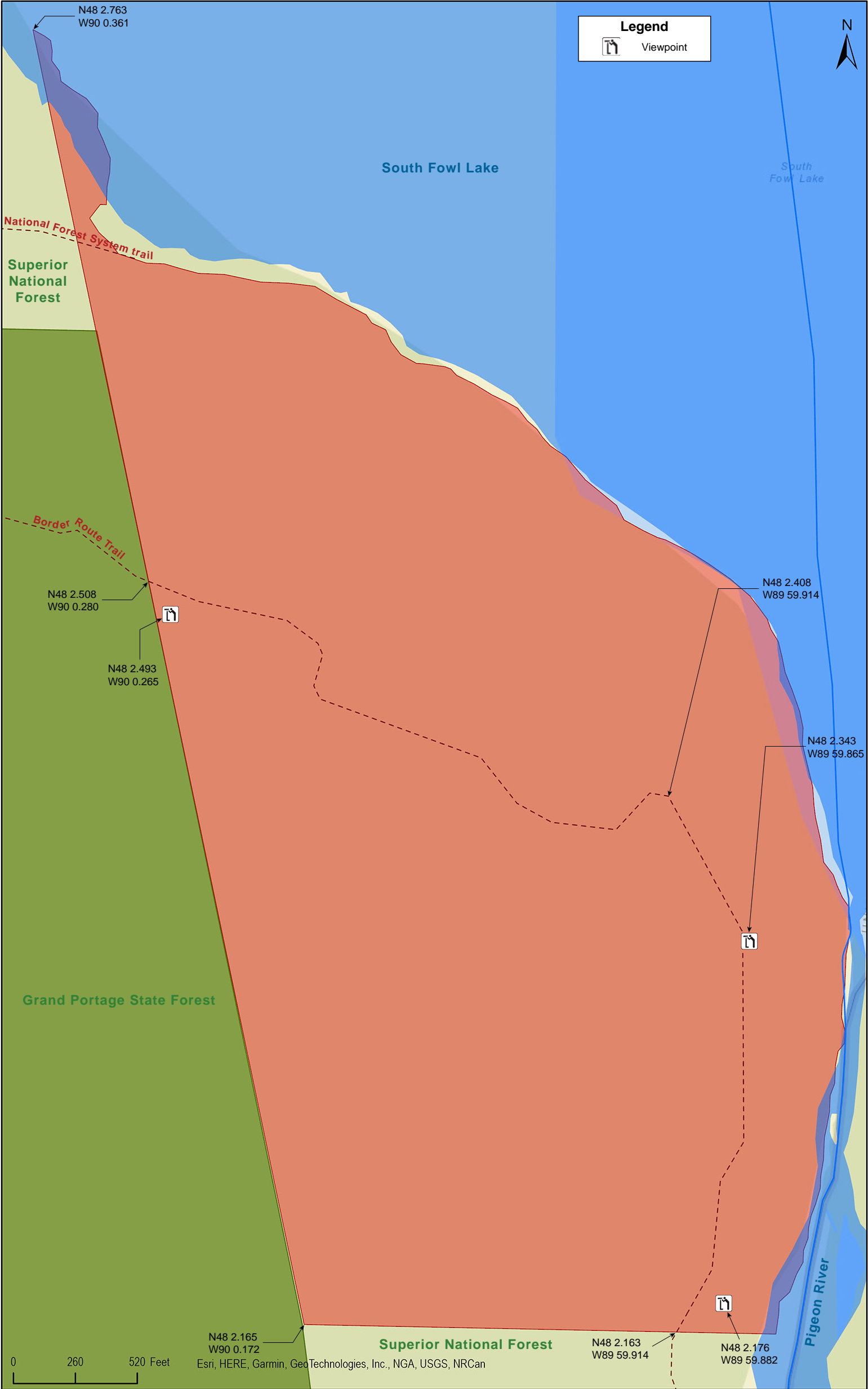
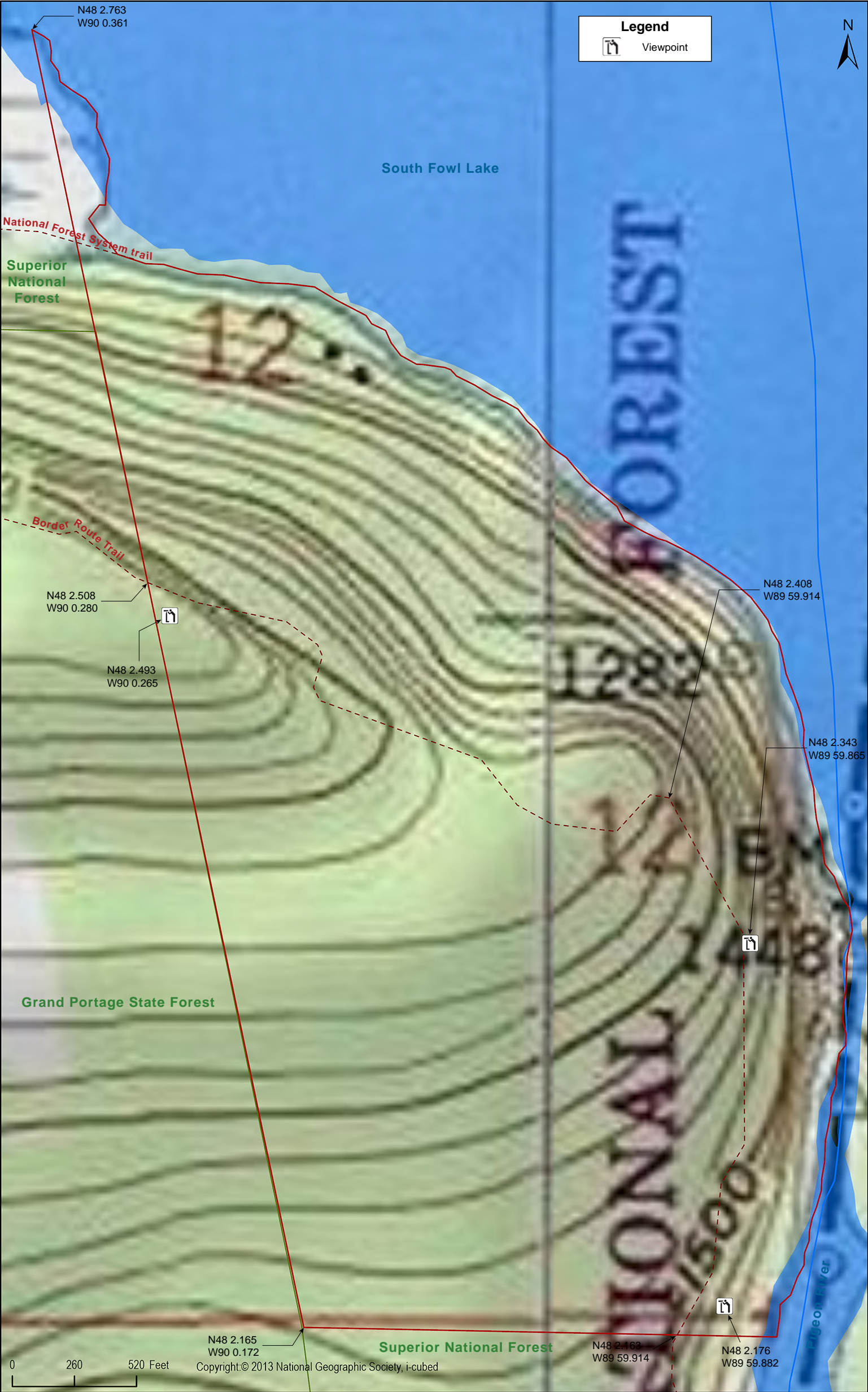


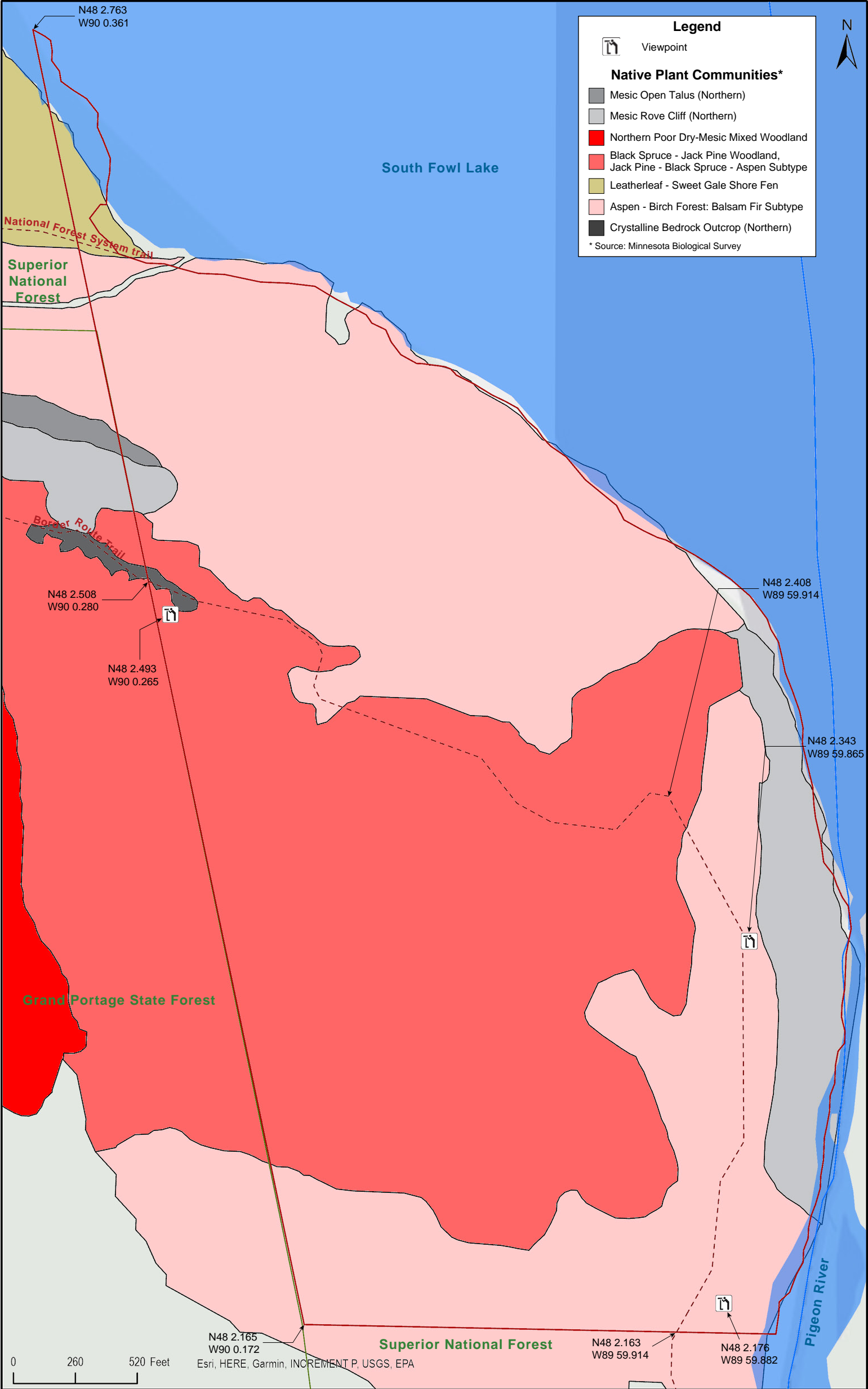


Pigeon River Cliffs

Cook County









Pigeon River Cliffs

Directions and Notes from The Nature Conservancy

From Hovland MN, take County Road 16 (Arrowhead Trail) north approximately 15 miles to South Fowl Road. Turn right on South Fowl Road and travel approximately 1-½ miles to where the road ends. Park here and walk north on the narrow road for a little more than ¼ mile. Look for the border route trail heading east (right). Follow the Border Route trail up and along the cliffs returning the way you came.

Notes from MinnesotaSeasons.com

Parking

N48 2.188, W90 0.710

Getting There

Park at the end of South Fowl Road. Follow the narrow, unimproved road north 0.3 miles (540 yards) to the Border Route Trail. The road continues north to South Fowl Lake and is heavily used by OHVs. The trail crossing is easy to miss. It is unmarked and, depending on the time of year, overgrown. Look for a blaze in the form of two pieces of surveyor’s tape, one blue and one pink, hanging from a branch of a quaking aspen sapling on the east side of the road. See the map for the GPS coordinates of this trail crossing.

Border Route Trail

The Border Route Trail passes through this preserve. It is flagged with blue, sometimes pink, surveyor’s tape. In a few places there is a pile of stones (cairn) marking the trail. Visitors are asked to stay on the trail to avoid trampling endangered plant species.

State Forest

This site lies within the Grand Portage State Forest.

DISCLAIMER OF WARRANTIES AND LIMITATIONS OF LIABILITY

MinnesotaSeasons.com, The Nature Conservancy, U.S. Department of Agriculture, Forest Service, U.S. Fish and Wildlife Service, the state of Minnesota, the Minnesota Department of Natural Resources, and their employees, make no representations or warranties, express or implied, with respect to the use of or reliance on the data provided herewith, regardless of its format or means of transmission. There are no guarantees or representations to the user as to the accuracy, currency, completeness, suitability or reliability of this data for any purpose. THE USER ACCEPTS THE DATA AND/OR SOFTWARE "AS IS" AND ASSUMES ALL RISKS ASSOCIATED WITH ITS USE.

IN NO EVENT SHALL MINNESOTASEASONS.COM, TNC, USDA-FS, USFWS, OR MNDNR BE LIABLE FOR ANY DIRECT, INDIRECT, INCIDENTAL, SPECIAL, EXEMPLARY, OR CONSEQUENTIAL DAMAGES (INCLUDING, BUT NOT LIMITED TO, PROCUREMENT OF SUBSTITUTE GOODS OR SERVICES; LOSS OF USE, DATA, OR PROFITS; OR BUSINESS INTERRUPTION) HOWEVER CAUSED AND ON ANY THEORY OF LIABILITY, WHETHER IN CONTRACT, STRICT LIABILITY, OR TORT (INCLUDING NEGLIGENCE OR OTHERS) ARISING IN ANY WAY OUT OF THE USE OF THIS DATA, EVEN IF ADVISED OF THE POSSIBILITY OF SUCH DAMAGE OR FOR ANY CLAIM BY ANY OTHER PARTY.

Your use of the data is acceptance on your part of the terms and conditions set forth herein.