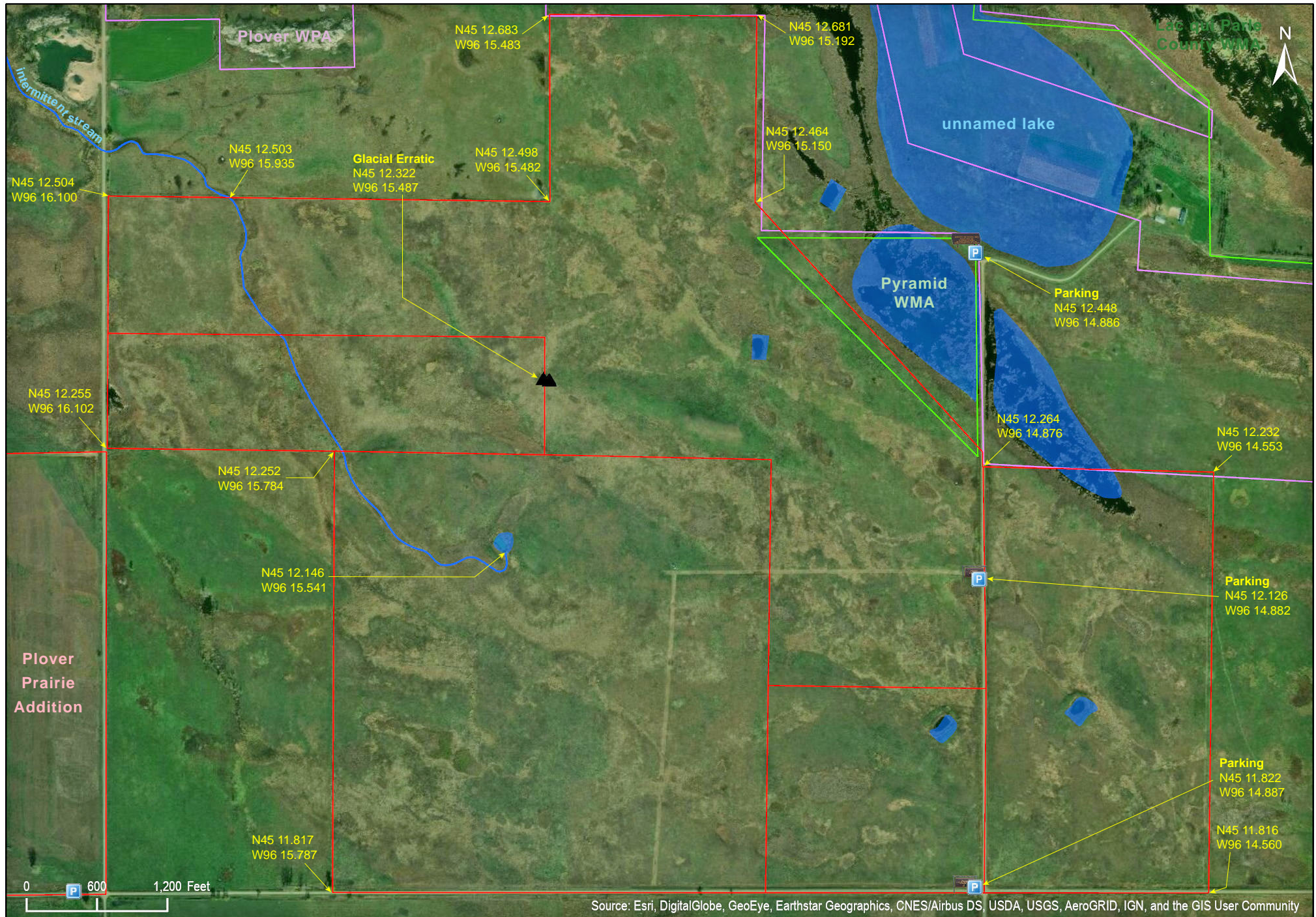


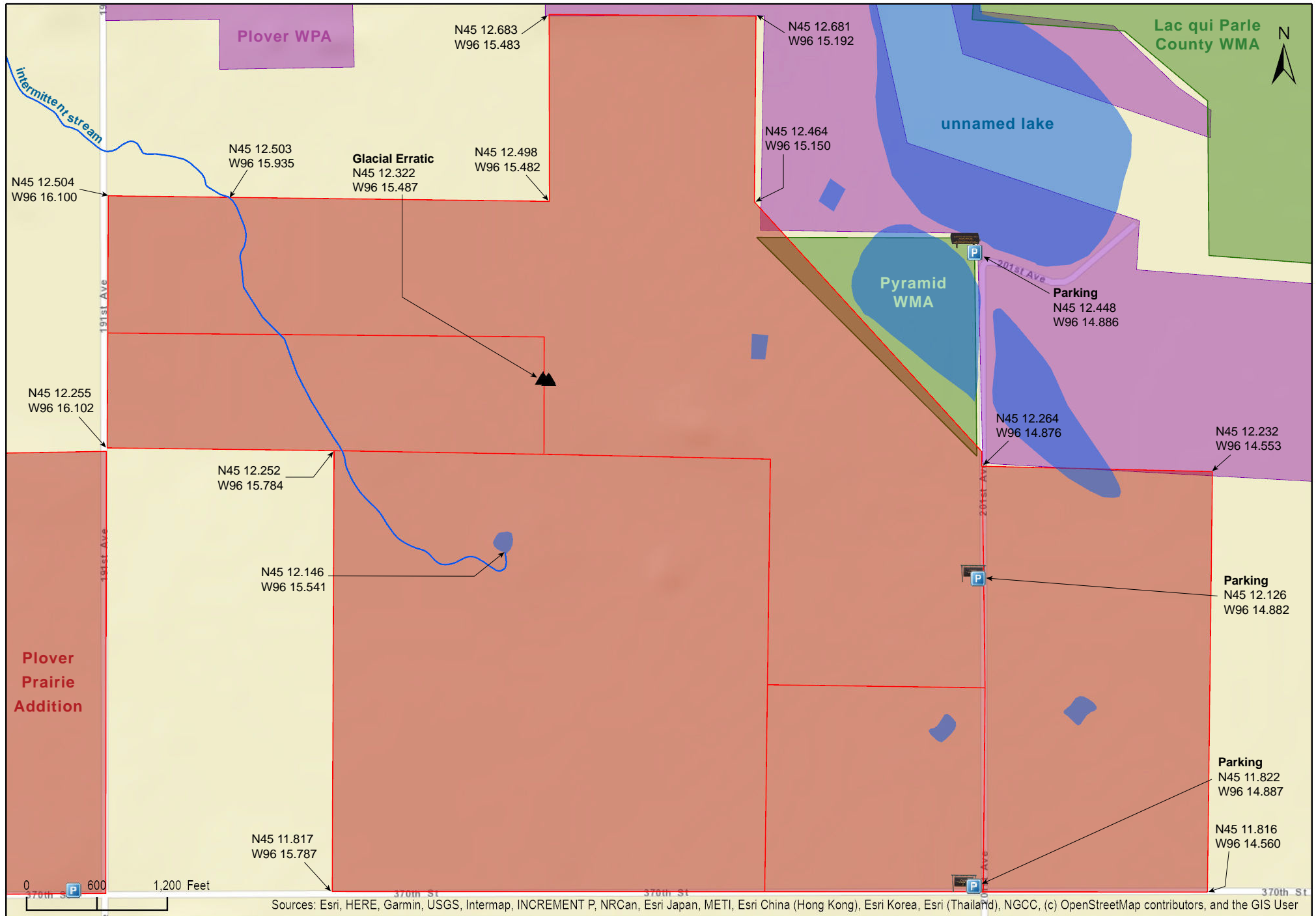
Plover Prairie East Unit

Lac qui Parle County



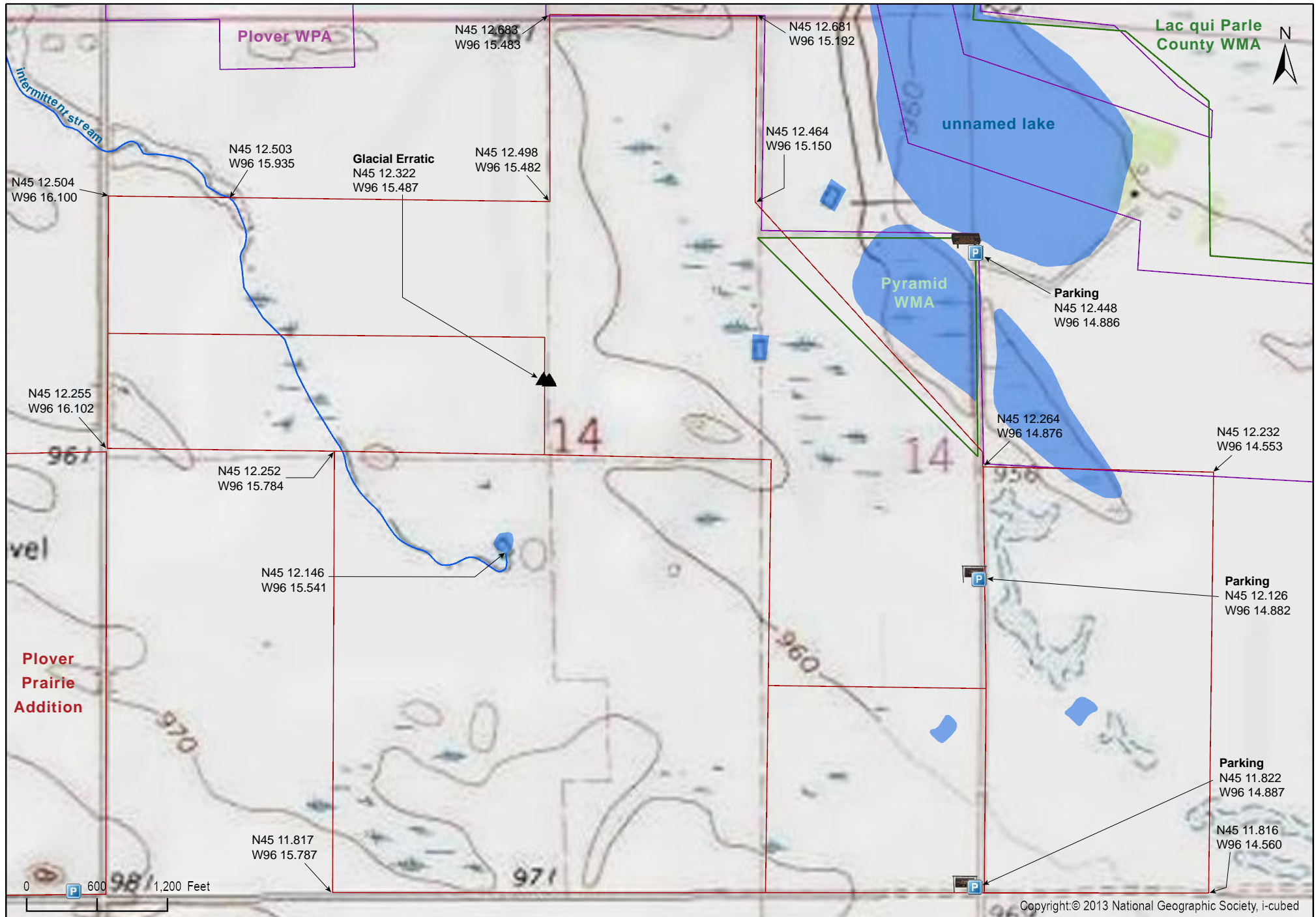
Plover Prairie East Unit

Lac qui Parle County



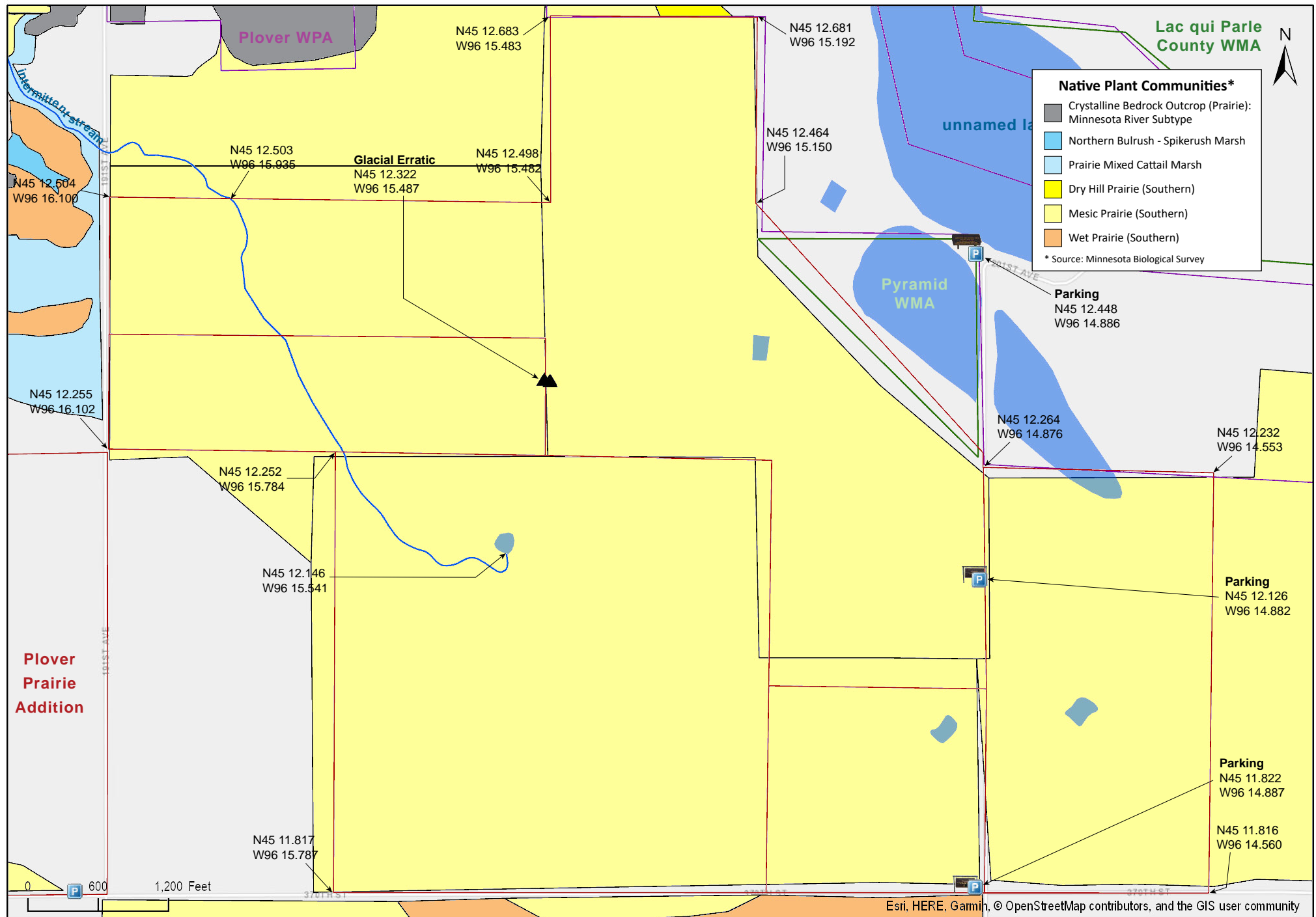
Plover Prairie East Unit

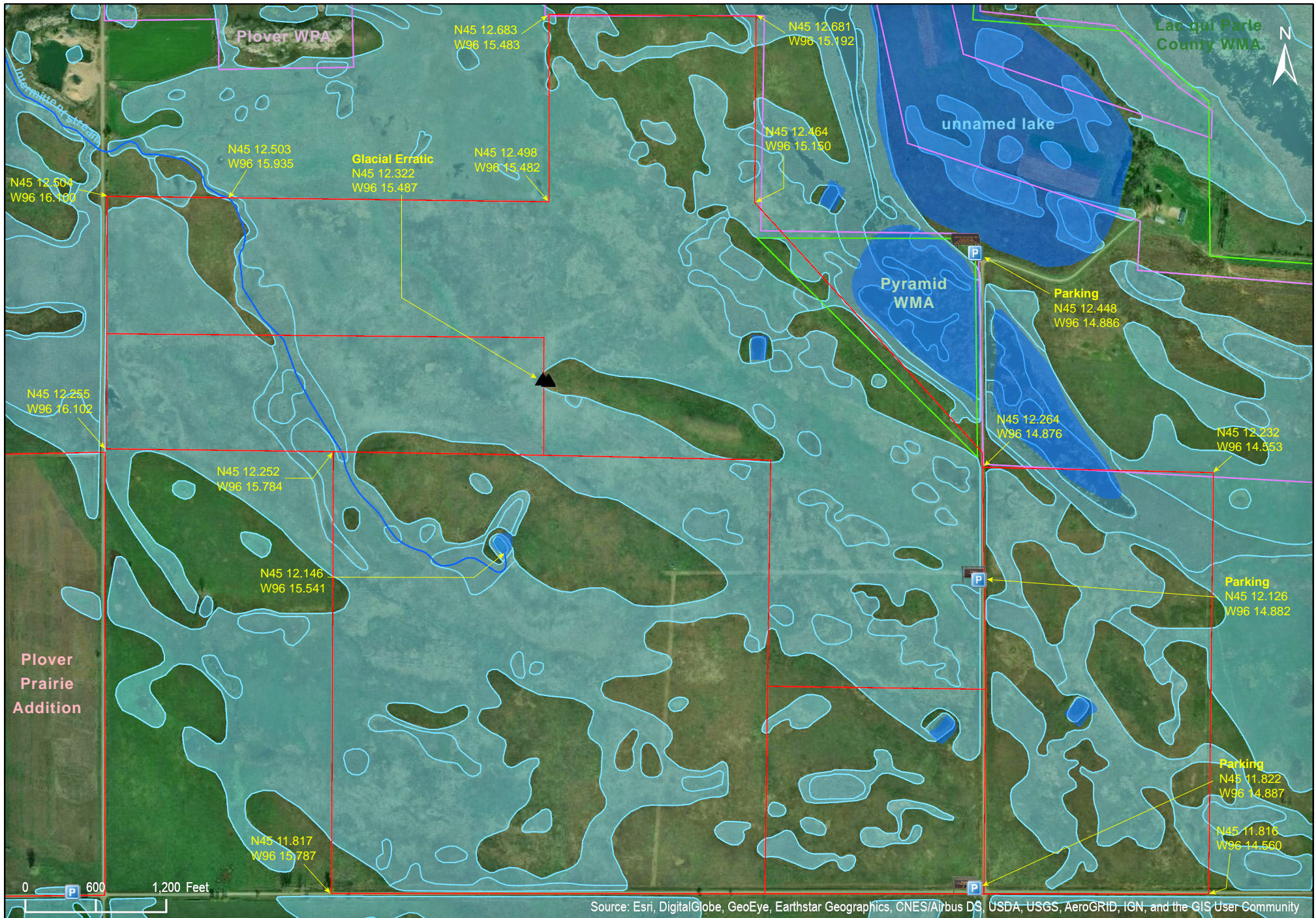
Lac qui Parle County



Plover Prairie East Unit

Lac qui Parle County



Plover Prairie
East Unit

Plover Prairie East Unit

Directions and Notes from The Nature Conservancy

From Bellingham, take State Highway 75 about three miles north to County Road 38. Turn east, and drive for two miles. Turn north, and drive for one mile. At this intersection, the preserve is located on the northwest and northeast corners, and is marked by a large wood sign.

To visit the west unit, turn west and go two miles to State Highway 75. Turn north for one-half mile. The main sign and entrance are located on the east side of the highway.

Notes from MinnesotaSeasons.com

Parking

The Nature Conservancy Web page for this location does not suggest where to park. The roads bordering this site are very narrow gravel roads with no shoulders. Meeting a vehicle travelling in the opposite direction would be an adventure. There is no room anywhere to park on the shoulder. A visitor has three options for parking:

201st Ave.

There is a large, brown, The Nature Conservancy (TNC) sign near 201st Ave., a gravel road with a Dead End sign at the intersection. Next to the TNC sign there is an unmowed (in 2012) field access. Drive across the field access and park next to the sign (see Parking photo below).
N45 12.126, W96 14.882

370th St.

There is a field access on the north side of 370th St. near the intersection with 201st Ave at the south boundary of the unit. Park on the field access.
N45 12.126, W96 14.882

Pyramid WMA

Pyramid Wildlife Management Area (WMA) borders part of the preserve on the north. Follow the dead end road to where it ends. On the right the road is gated and leads to a private farm. On the left is a small, grassy parking lot for the WMA. Park here and walk south on the road to the field access mentioned above.
N45 11.822, W96 14.887

DISCLAIMER OF WARRANTIES AND LIMITATIONS OF LIABILITY

MinnesotaSeasons.com, The Nature Conservancy, U.S. Department of Agriculture, Forest Service, U.S. Fish and Wildlife Service, the state of Minnesota, the Minnesota Department of Natural Resources, and their employees, make no representations or warranties, express or implied, with respect to the use of or reliance on the data provided herewith, regardless of its format or means of transmission. There are no guarantees or representations to the user as to the accuracy, currency, completeness, suitability or reliability of this data for any purpose. THE USER ACCEPTS THE DATA AND/OR SOFTWARE "AS IS" AND ASSUMES ALL RISKS ASSOCIATED WITH ITS USE.

IN NO EVENT SHALL MINNESOTASEASONS.COM, TNC, USDA-FS, USFWS, OR MNDNR BE LIABLE FOR ANY DIRECT, INDIRECT, INCIDENTAL, SPECIAL, EXEMPLARY, OR CONSEQUENTIAL DAMAGES (INCLUDING, BUT NOT LIMITED TO, PROCUREMENT OF SUBSTITUTE GOODS OR SERVICES; LOSS OF USE, DATA, OR PROFITS; OR BUSINESS INTERRUPTION) HOWEVER CAUSED AND ON ANY THEORY OF LIABILITY, WHETHER IN CONTRACT, STRICT LIABILITY, OR TORT (INCLUDING NEGLIGENCE OR OTHERS) ARISING IN ANY WAY OUT OF THE USE OF THIS DATA, EVEN IF ADVISED OF THE POSSIBILITY OF SUCH DAMAGE OR FOR ANY CLAIM BY ANY OTHER PARTY.

Your use of the data is acceptance on your part of the terms and conditions set forth herein.