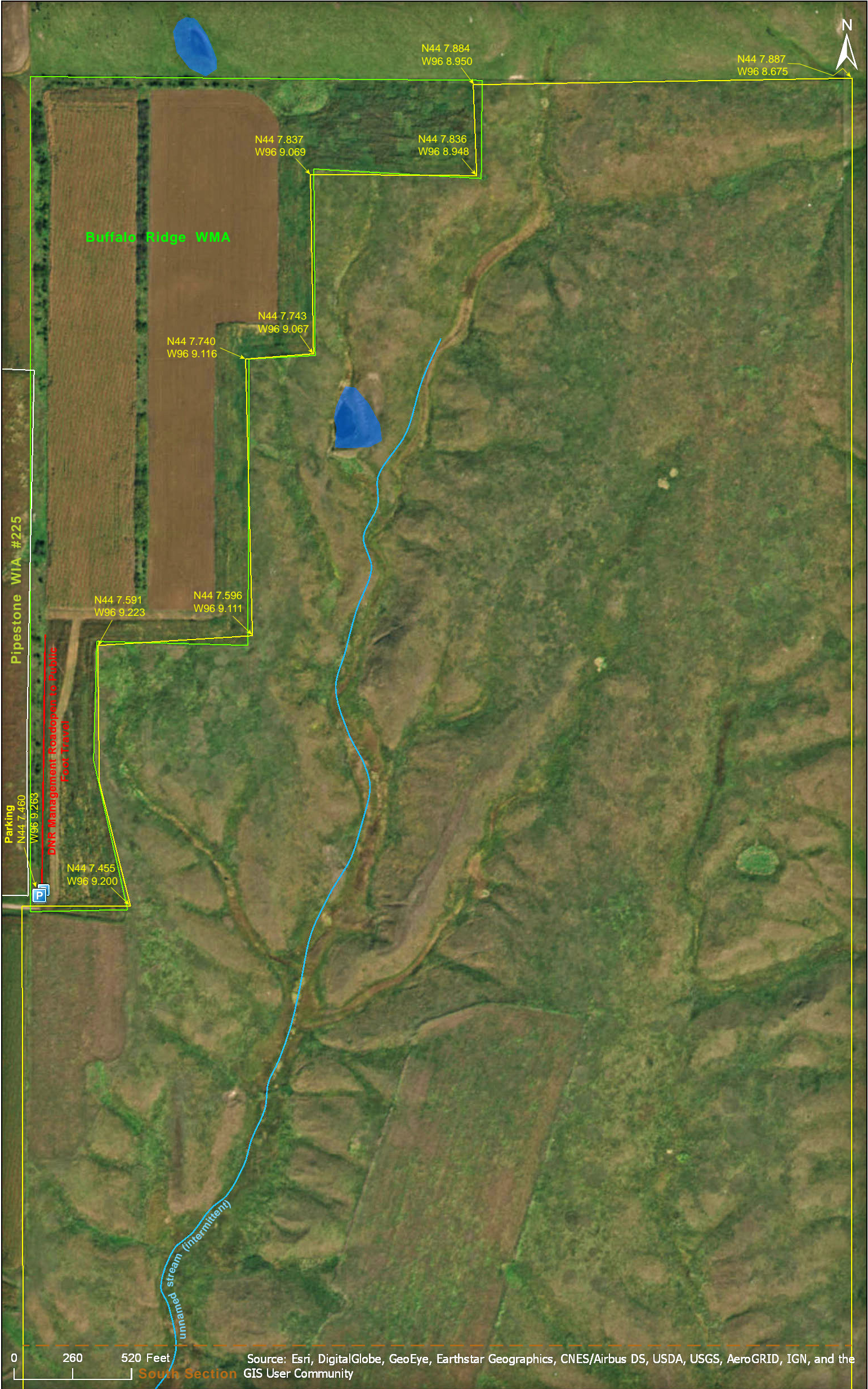


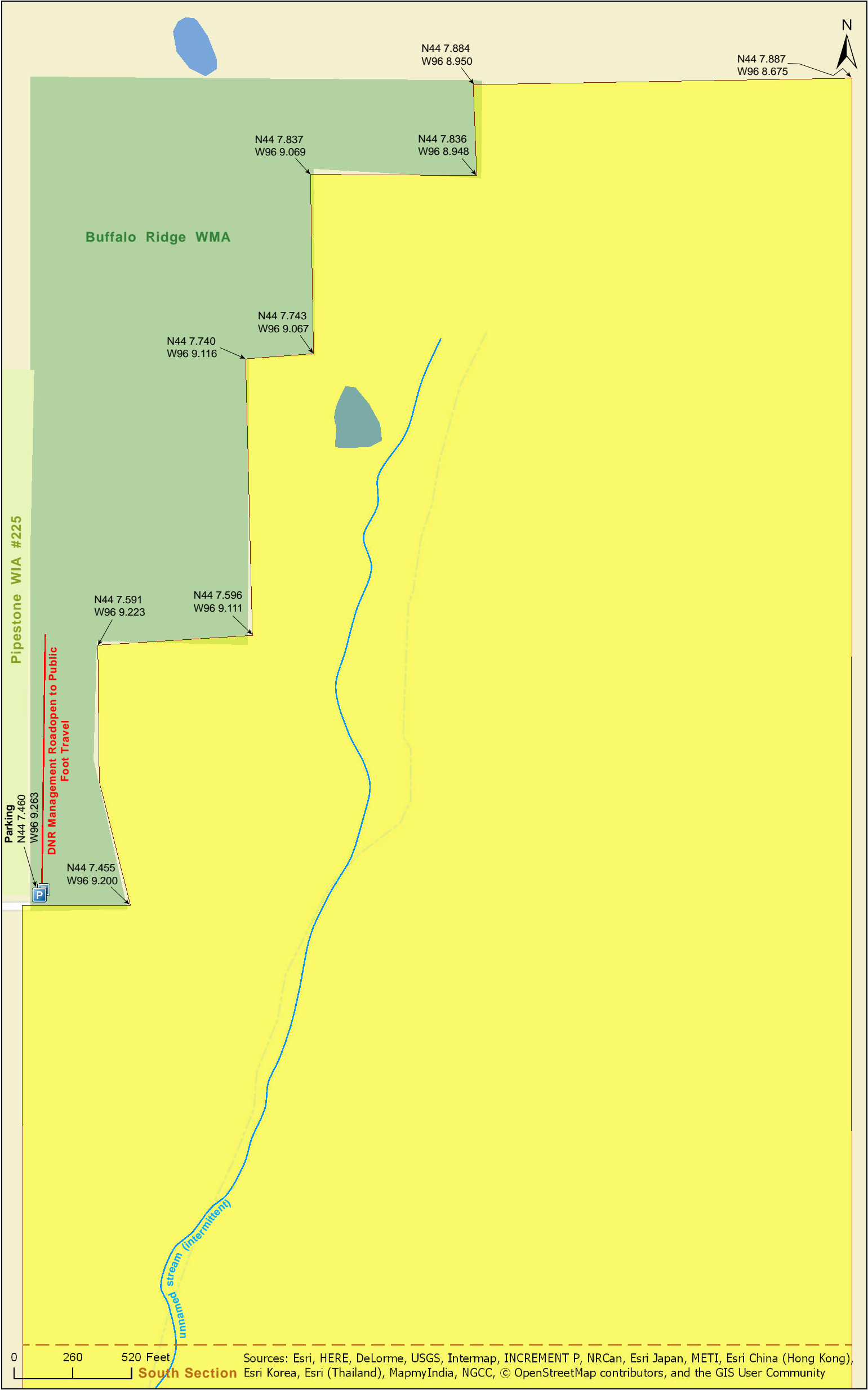
Prairie Coteau SNA
North Section

Pipestone County



Prairie Coteau SNA
North Section

Pipestone County



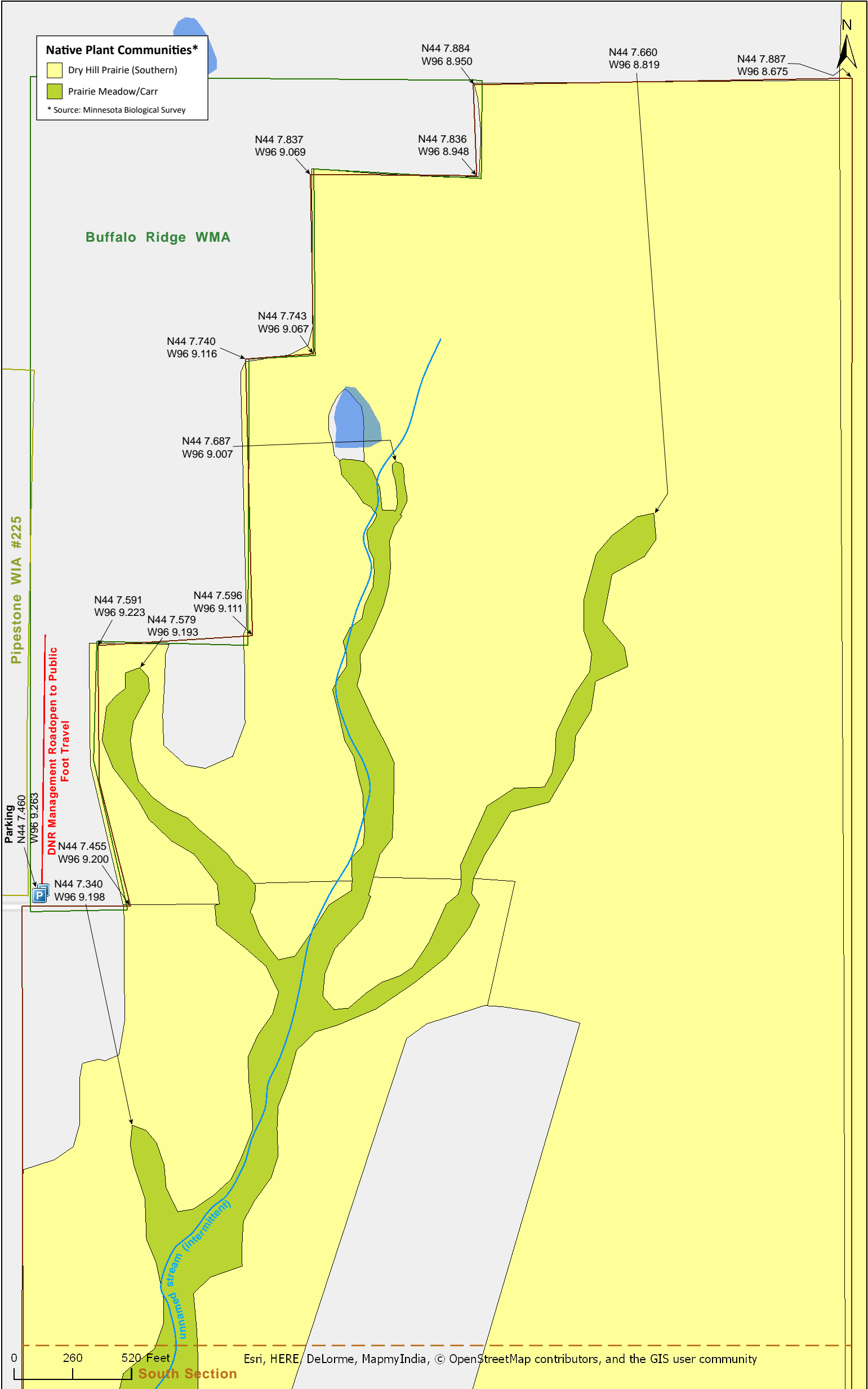
Prairie Coteau SNA
North Section

Pipestone County



Prairie Coteau SNA
North Section

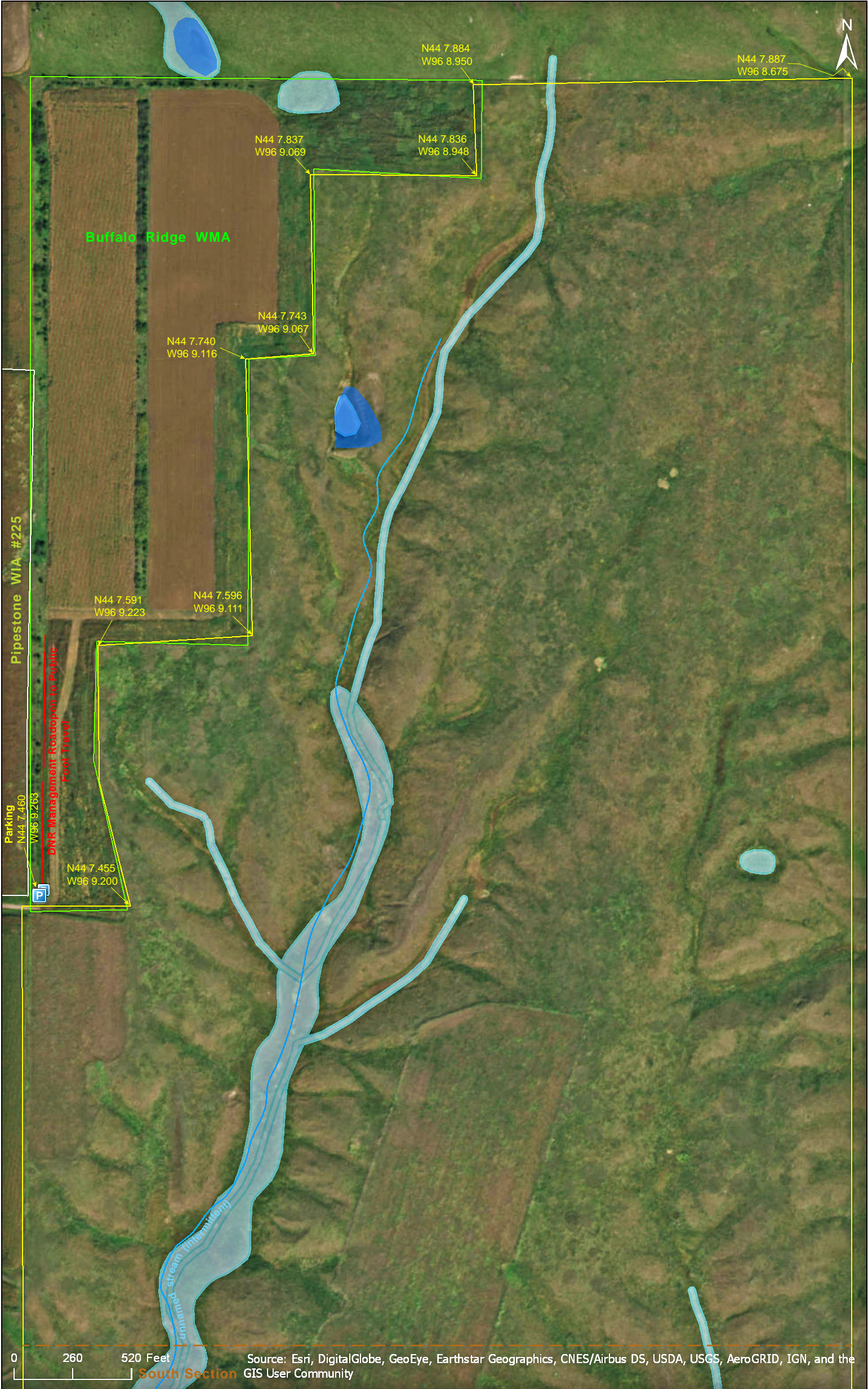
Pipestone County



Prairie Coteau SNA
North Section

National Wetlands Inventory

Pipestone County



Prairie Coteau SNA North Section

Directions and Notes from Minnesota DNR

North

Directions: From Pipestone 10 miles NE on MN Hwy 23, then 0.5 mile W on Co Rd 81 (181st St), then 1 mile N on Co Rd 80 (150th Ave), then 0.5 mile E on 191th St. Park at dead end.

Lat/Lon: 44.12427, -96.154437

Central

Directions: From Pipestone 10 miles NE on MN Hwy 23. Park in lot on W, across railroad grade.

Lat/Lon: 44.114623, -96.150174

South

Directions: From Pipestone 10 miles NE on MN Hwy 23, then 0.25 mile E on Co Rd 84 (181st St). Park on N road shoulder.

Lat/Lon: 44.109899, -96.145971

This site has no maintained trails or other recreational facilities. This site is in an Audubon Important Bird Area. Buffalo Ridge WMA is adjacent to this site.

Notes from MinnesotaSeasons.com

Parking

North, Buffalo Ridge WMA parking lot
N44 7.460, W96 9.263

Central, MN Hwy. 23, parking lot and interpretive sign
N44 6.878, W96 9.011

South, County Road 84, park on shoulder
N44 6.594, W96 8.758

DISCLAIMER OF WARRANTIES AND LIMITATIONS OF LIABILITY

MinnesotaSeasons.com, The Nature Conservancy, U.S. Department of Agriculture, Forest Service, U.S. Fish and Wildlife Service, the state of Minnesota, the Minnesota Department of Natural Resources, and their employees, make no representations or warranties, express or implied, with respect to the use of or reliance on the data provided herewith, regardless of its format or means of transmission. There are no guarantees or representations to the user as to the accuracy, currency, completeness, suitability or reliability of this data for any purpose. THE USER ACCEPTS THE DATA AND/OR SOFTWARE "AS IS" AND ASSUMES ALL RISKS ASSOCIATED WITH ITS USE.

IN NO EVENT SHALL MINNESOTASEASONS.COM, TNC, USDA-FS, USFWS, OR MNDNR BE LIABLE FOR ANY DIRECT, INDIRECT, INCIDENTAL, SPECIAL, EXEMPLARY, OR CONSEQUENTIAL DAMAGES (INCLUDING, BUT NOT LIMITED TO, PROCUREMENT OF SUBSTITUTE GOODS OR SERVICES; LOSS OF USE, DATA, OR PROFITS; OR BUSINESS INTERRUPTION) HOWEVER CAUSED AND ON ANY THEORY OF LIABILITY, WHETHER IN CONTRACT, STRICT LIABILITY, OR TORT (INCLUDING NEGLIGENCE OR OTHERS) ARISING IN ANY WAY OUT OF THE USE OF THIS DATA, EVEN IF ADVISED OF THE POSSIBILITY OF SUCH DAMAGE OR FOR ANY CLAIM BY ANY OTHER PARTY.

Your use of the data is acceptance on your part of the terms and conditions set forth herein.