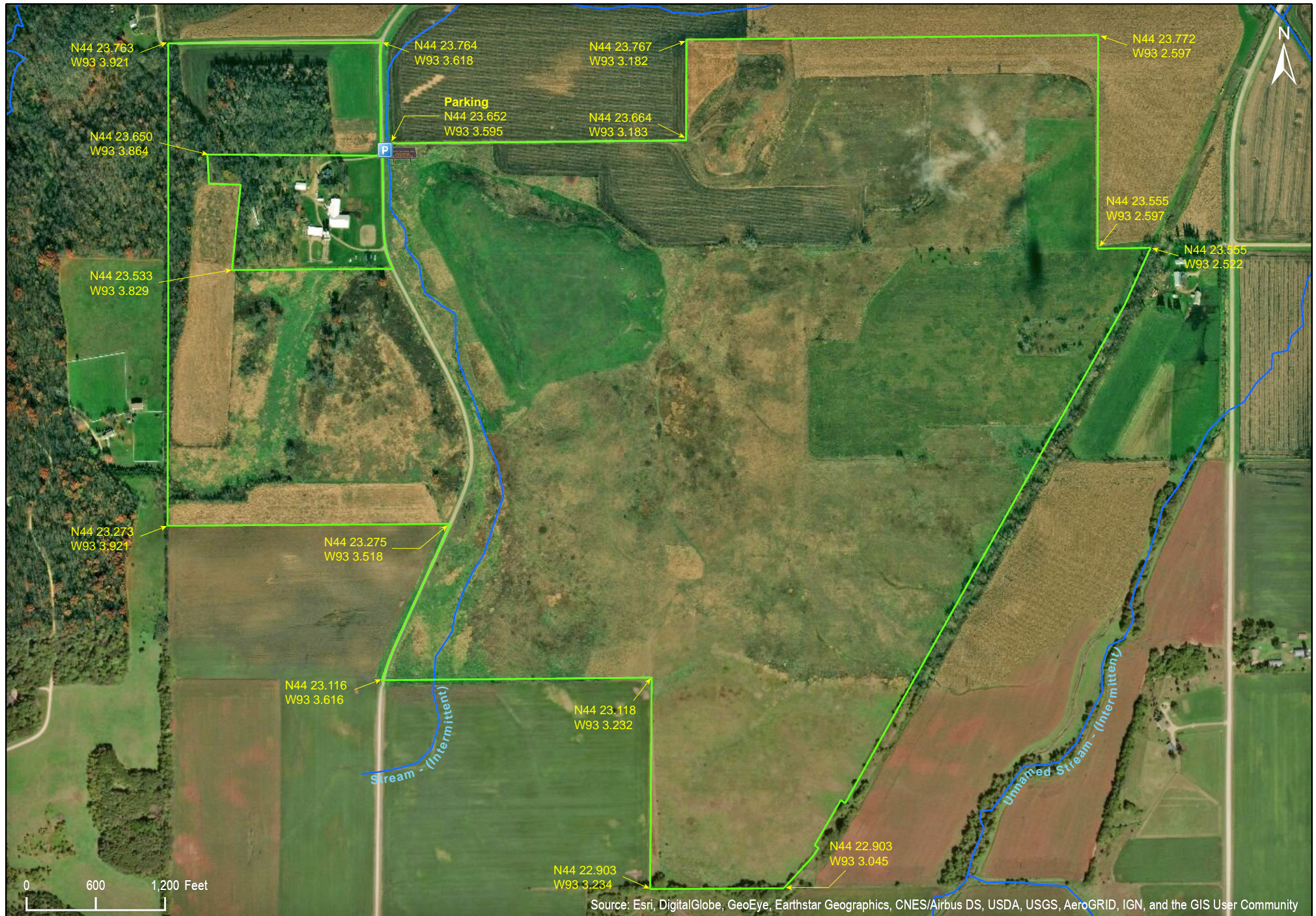


Prairie Creek WMA Koester Prairie Unit

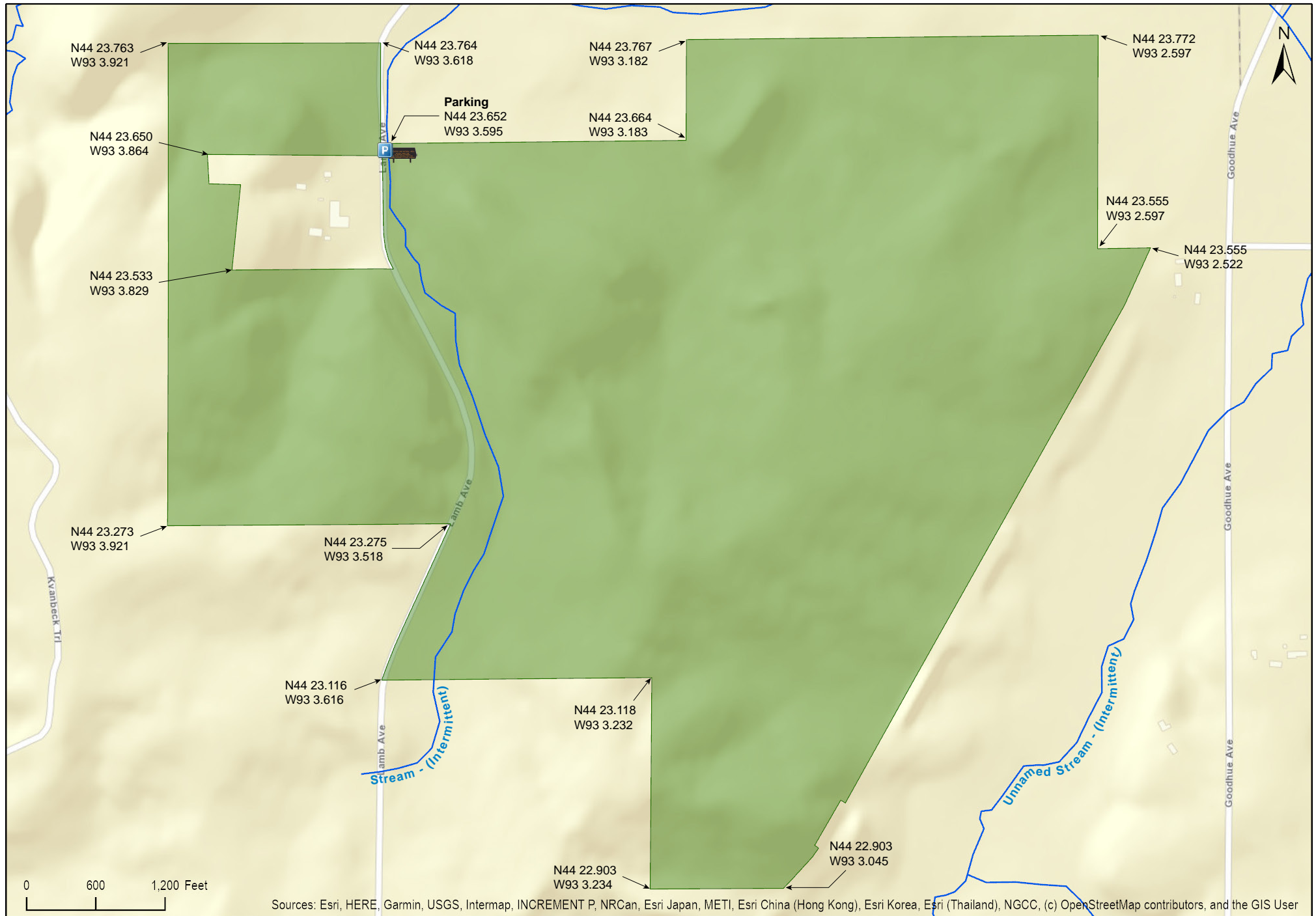
Rice County



Source: Esri, DigitalGlobe, GeoEye, Earthstar Geographics, CNES/Airbus DS, USDA, USGS, AeroGRID, IGN, and the GIS User Community

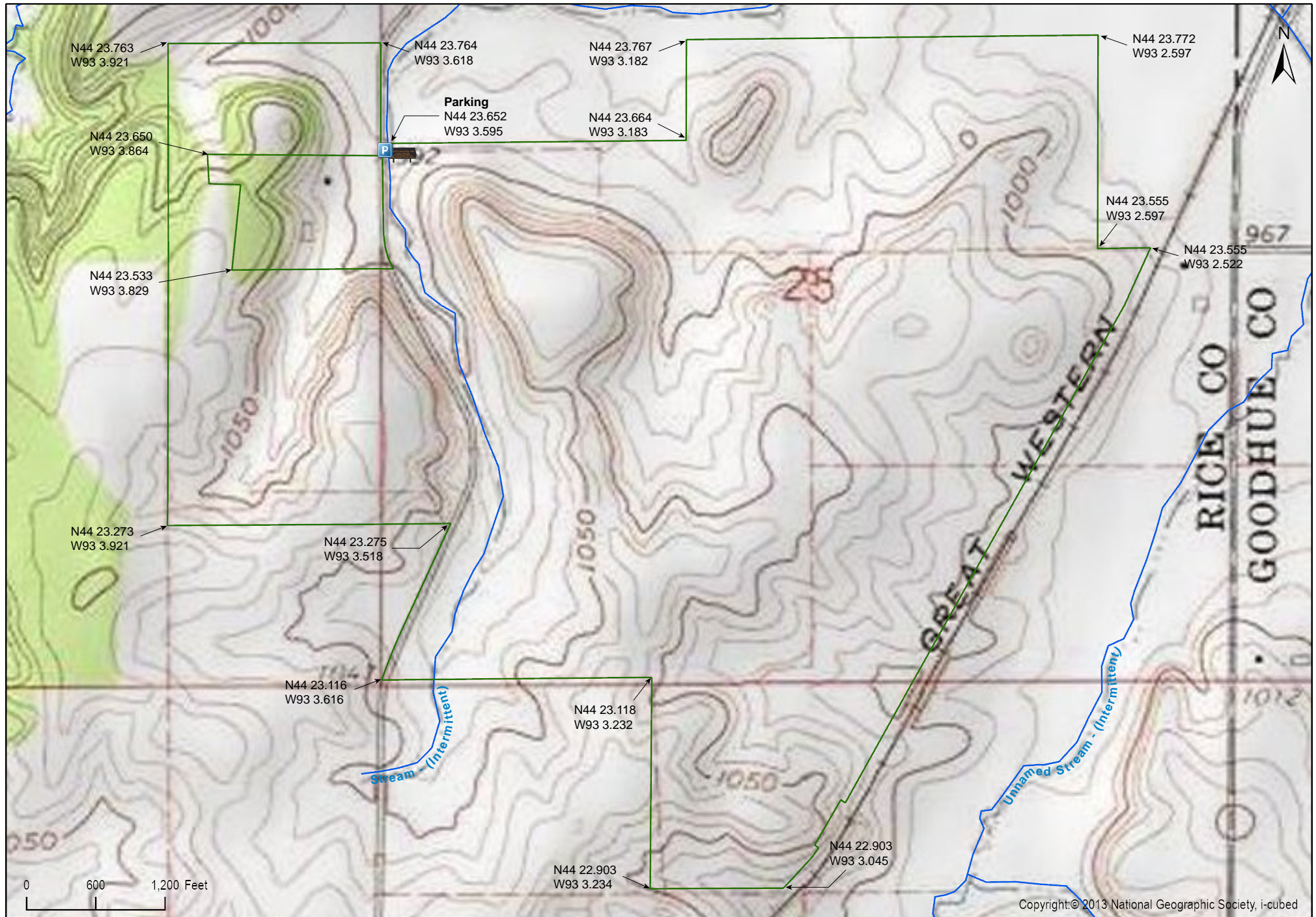
Prairie Creek WMA Koester Prairie Unit

Rice County



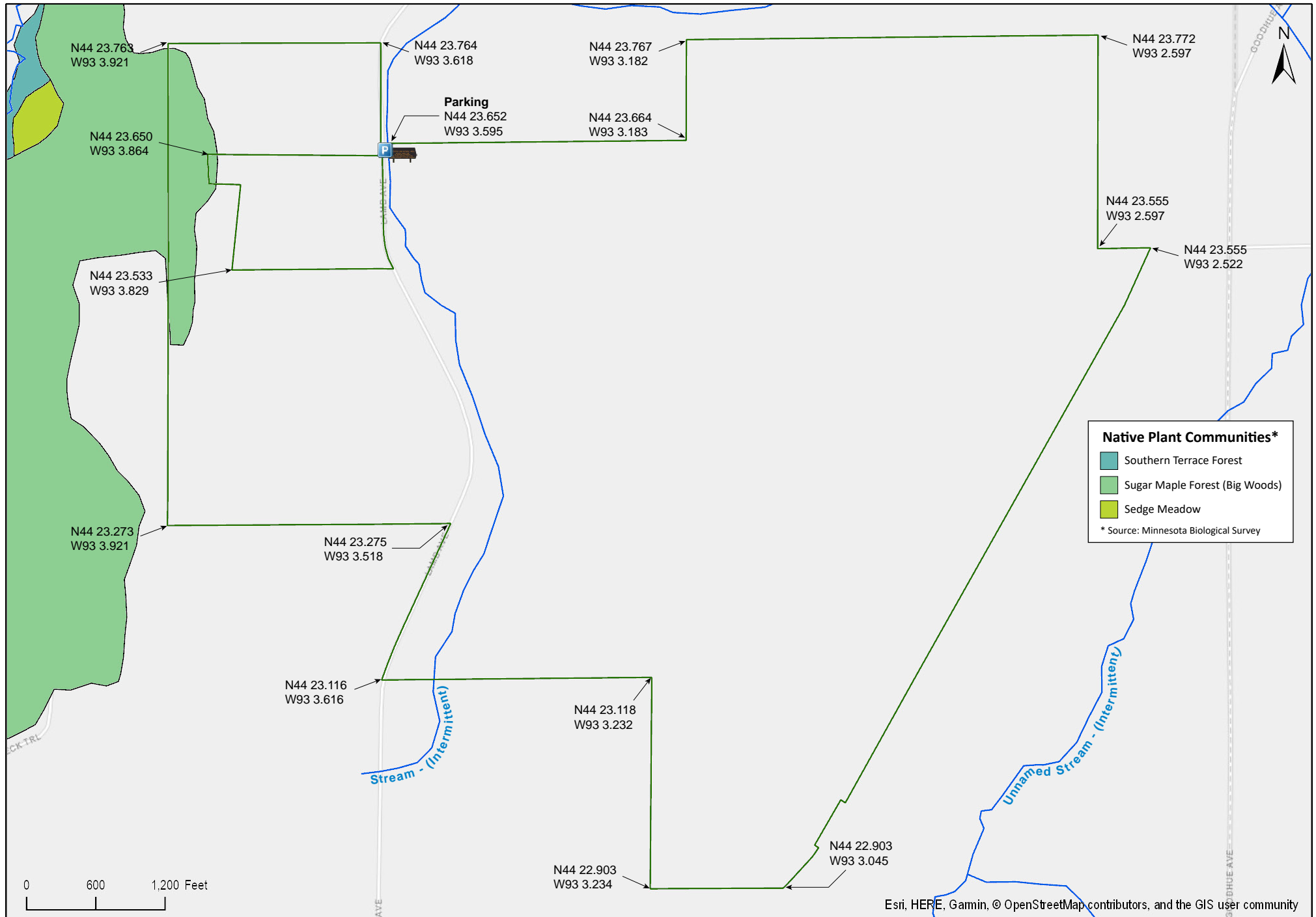
Prairie Creek WMA Koester Prairie Unit

Rice County

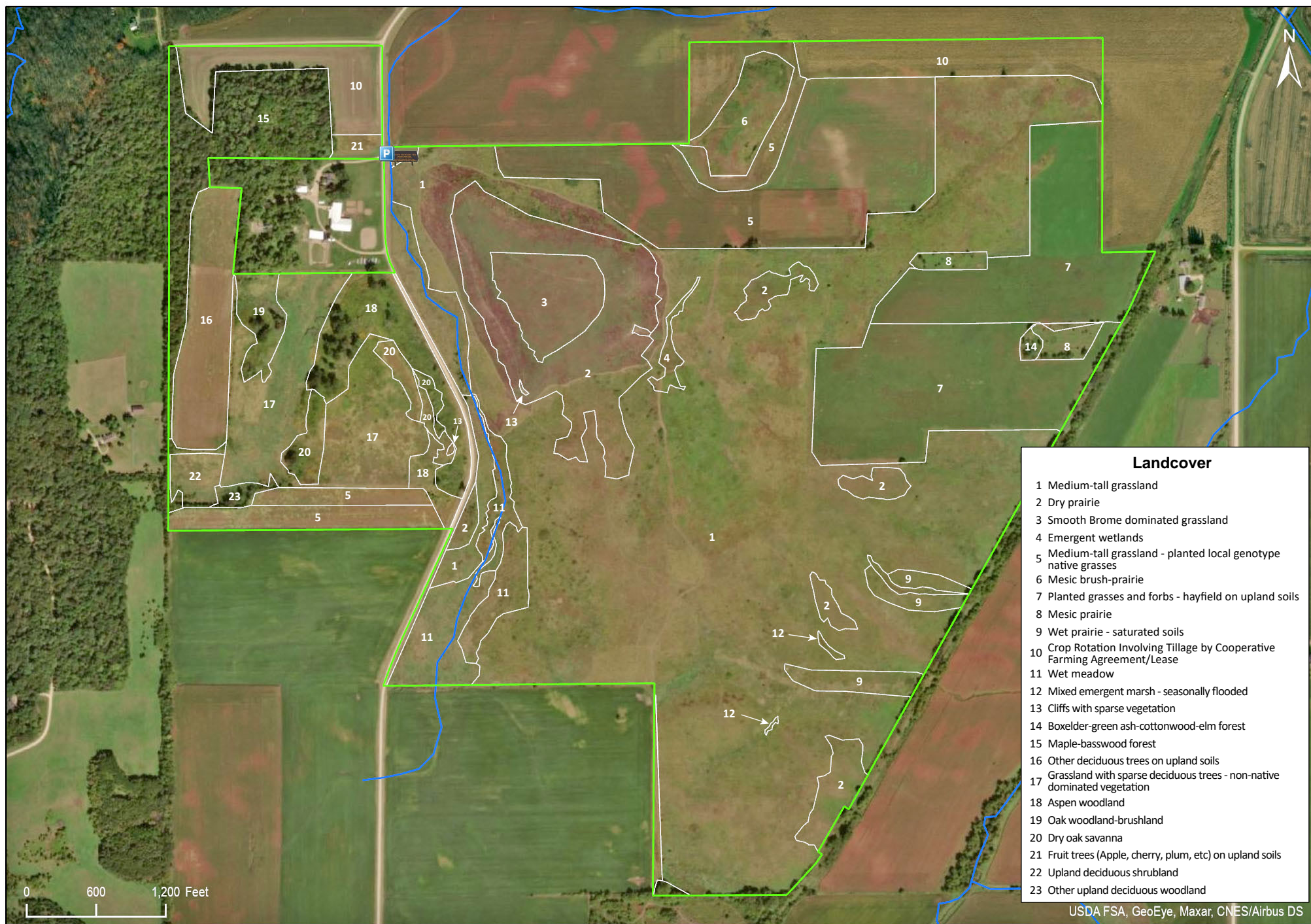


Prairie Creek WMA Koester Prairie Unit

Rice County



Esri, HERE, Garmin, © OpenStreetMap contributors, and the GIS user community





Prairie Creek WMA Koester Prairie Unit

Directions and Notes from Minnesota DNR

Directions

From Dennison, go 1 mile W on CSAH 31 then 1 mile S on Lamb Avenue to 13371 Lamb Avenue.

An off road parking area is available on the east side of Lamb Avenue along the north boundary of the wildlife area. Please respect private property. Stay off private drives and take care not to block shared field accesses.

Notes from MinnesotaSeasons.com

Parking

There is a parking lot on the east side of Lamb Ave. near the north boundary.
N44 23.655, W93 3.612

DISCLAIMER OF WARRANTIES AND LIMITATIONS OF LIABILITY

MinnesotaSeasons.com, The Nature Conservancy, U.S. Department of Agriculture, Forest Service, U.S. Fish and Wildlife Service, the state of Minnesota, the Minnesota Department of Natural Resources, and their employees, make no representations or warranties, express or implied, with respect to the use of or reliance on the data provided herewith, regardless of its format or means of transmission. There are no guarantees or representations to the user as to the accuracy, currency, completeness, suitability or reliability of this data for any purpose. THE USER ACCEPTS THE DATA AND/OR SOFTWARE "AS IS" AND ASSUMES ALL RISKS ASSOCIATED WITH ITS USE.

IN NO EVENT SHALL MINNESOTASEASONS.COM, TNC, USDA-FS, USFWS, OR MNDNR BE LIABLE FOR ANY DIRECT, INDIRECT, INCIDENTAL, SPECIAL, EXEMPLARY, OR CONSEQUENTIAL DAMAGES (INCLUDING, BUT NOT LIMITED TO, PROCUREMENT OF SUBSTITUTE GOODS OR SERVICES; LOSS OF USE, DATA, OR PROFITS; OR BUSINESS INTERRUPTION) HOWEVER CAUSED AND ON ANY THEORY OF LIABILITY, WHETHER IN CONTRACT, STRICT LIABILITY, OR TORT (INCLUDING NEGLIGENCE OR OTHERS) ARISING IN ANY WAY OUT OF THE USE OF THIS DATA, EVEN IF ADVISED OF THE POSSIBILITY OF SUCH DAMAGE OR FOR ANY CLAIM BY ANY OTHER PARTY.

Your use of the data is acceptance on your part of the terms and conditions set forth herein.