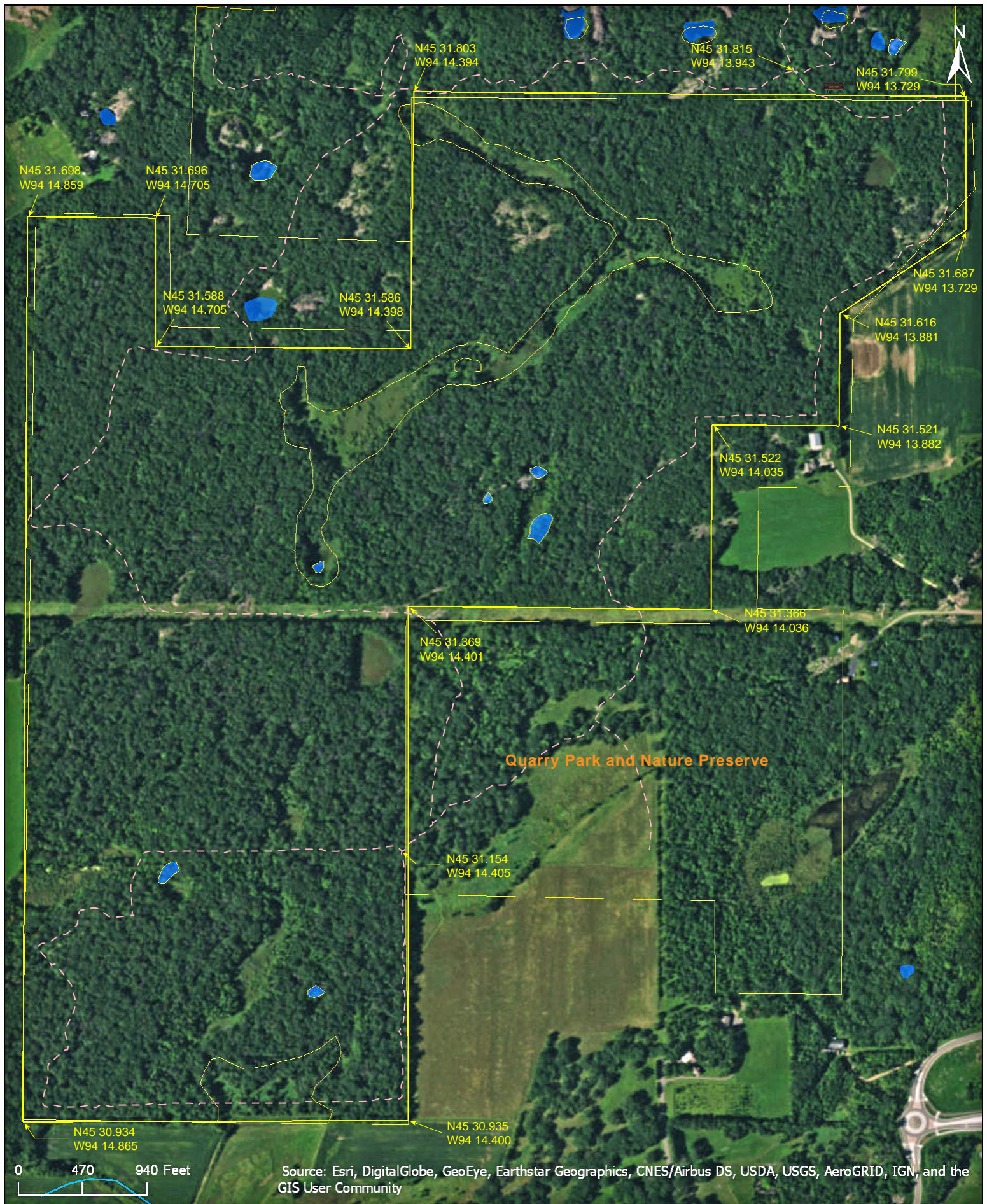


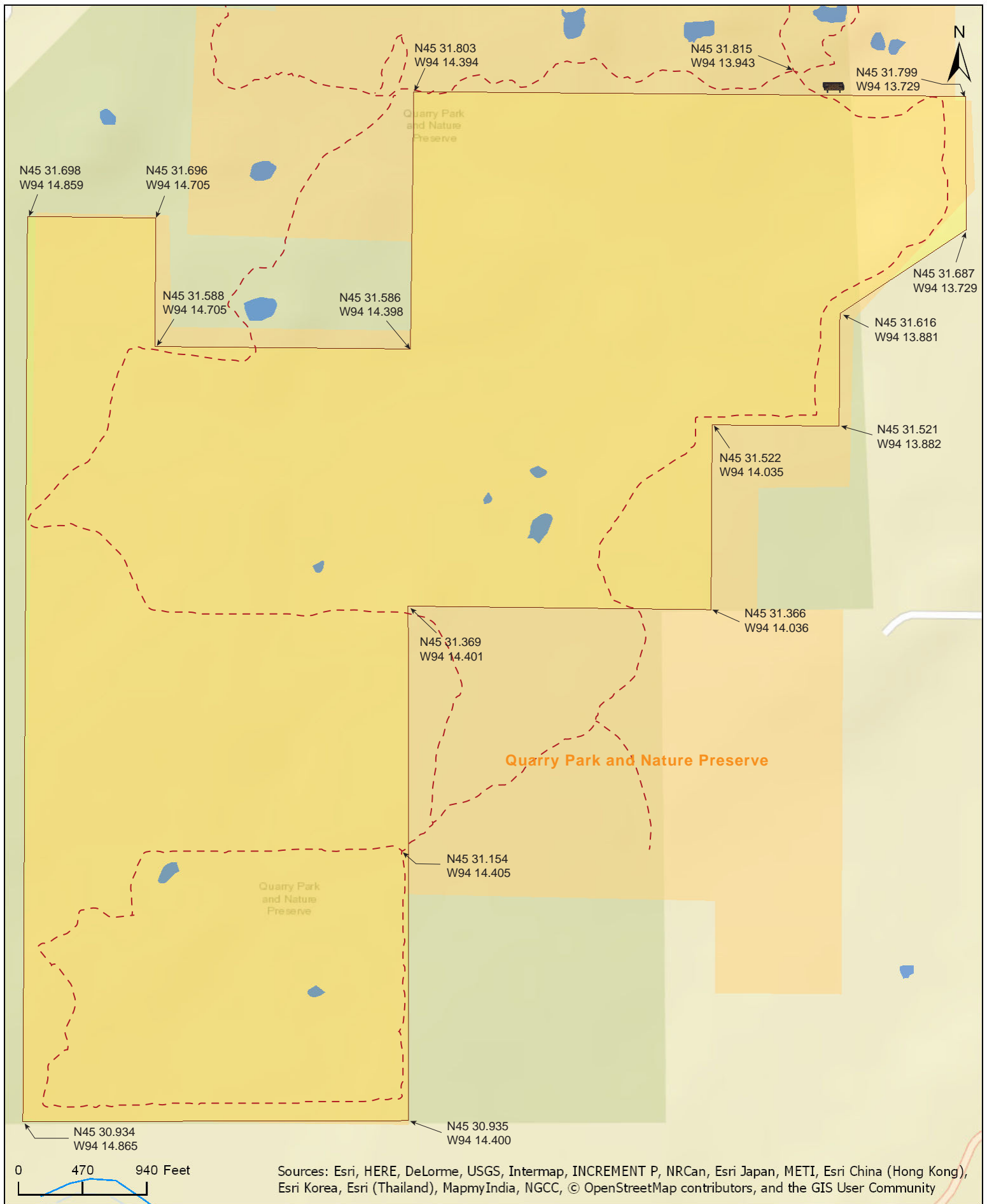
Quarry Park SNA

Stearns County



Quarry Park SNA

Stearns County



Sources: Esri, HERE, DeLorme, USGS, Intermap, INCREMENT P, NRCan, Esri Japan, METI, Esri China (Hong Kong), Esri Korea, Esri (Thailand), MapmyIndia, NGCC, © OpenStreetMap contributors, and the GIS User Community

Quarry Park SNA

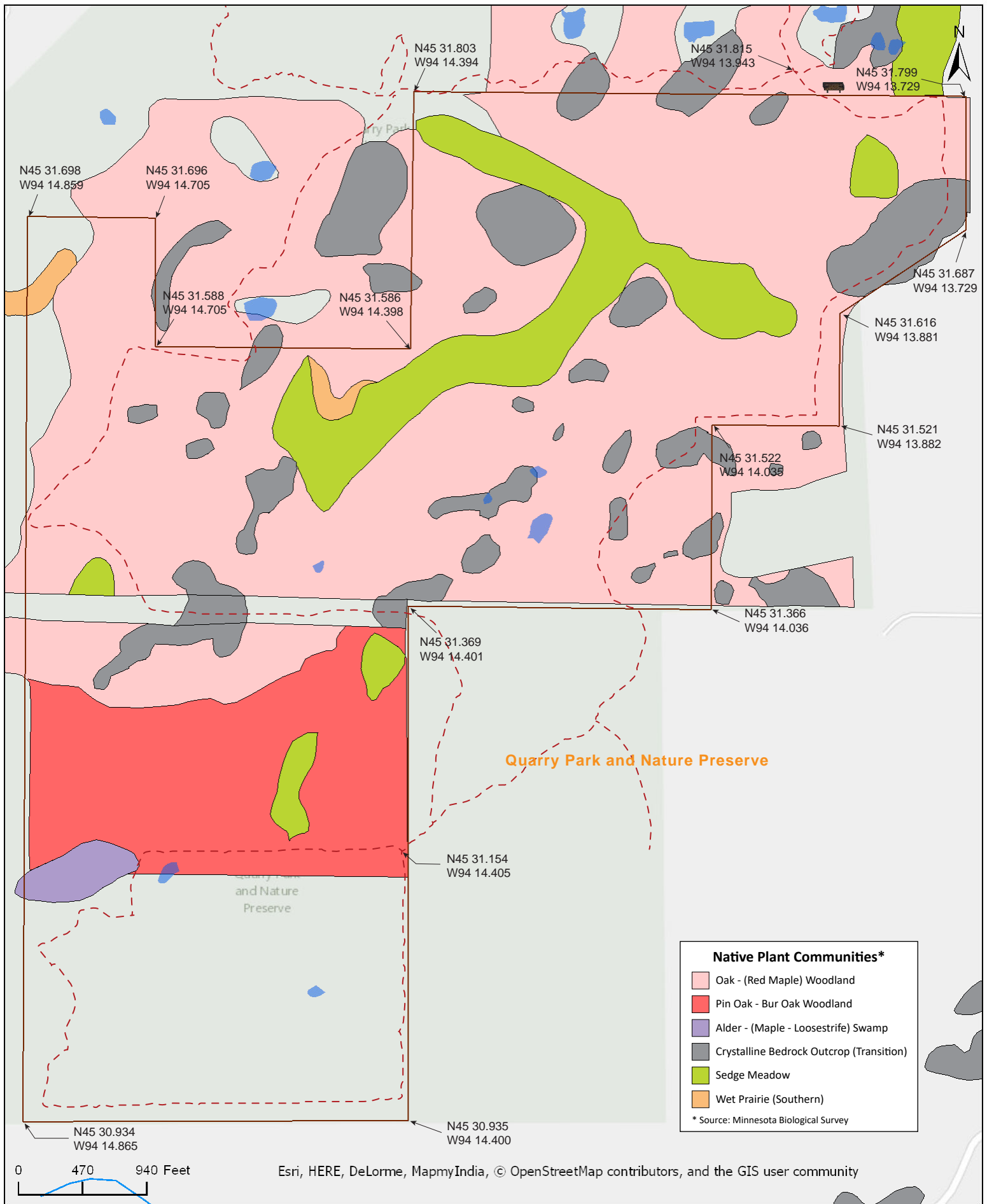
Stearns County



Copyright: © 2013 National Geographic Society, i-cubed

Quarry Park SNA

Stearns County





Quarry Park SNA

Directions and Notes from Minnesota DNR

Directions: In Waite Park, from MN Hwy 23 0.65 mile S on 10th Ave, then 0.75 mile W on Co Rd 137 (7th St). Park in lot on S for Quarry Park (fee required). Hike trails S through park and into site.

Lat/Lon: 45.535794, -94.241691

Hiking trails pass through this site. Recreational facilities available in Quarry Park and Nature Preserve.

Notes from Stearns County

The Park is open year-round. It is open from 8:00 AM to one-half hour after sunset. After a snow fall of 4 or more inches, the park is open for Cross Country Skiing until 10 PM

Permits

A vehicle parking permit is required at Quarry Park and Nature Preserve. The revenues generated from the fees are used to maintain park facilities.

Daily permits: \$5.00, Annual permits: \$20.00

Notes from MinnesotaSeasons.com

Parking

Quarry Park and Nature Preserve (fee)
N45 32.148, W94 14.501

This SNA is part of Quarry Park & Nature Preserve, a Stearns County park. A \$5 daily permit or a \$20 annual permit is required. Printed trail maps of the park, including the SNA, are available at the gate house and near the parking lot.

Hiking Trails

A wide mowed trail forms two loops mostly around the perimeter. Printed trail maps are available at the gate house and near the parking lot. The trail is sheltered from the wind by dense vegetation, so mosquito protection is recommended.

DISCLAIMER OF WARRANTIES AND LIMITATIONS OF LIABILITY

MinnesotaSeasons.com, The Nature Conservancy, U.S. Department of Agriculture, Forest Service, U.S. Fish and Wildlife Service, the state of Minnesota, the Minnesota Department of Natural Resources, and their employees, make no representations or warranties, express or implied, with respect to the use of or reliance on the data provided herewith, regardless of its format or means of transmission. There are no guarantees or representations to the user as to the accuracy, currency, completeness, suitability or reliability of this data for any purpose. THE USER ACCEPTS THE DATA AND/OR SOFTWARE "AS IS" AND ASSUMES ALL RISKS ASSOCIATED WITH ITS USE.

IN NO EVENT SHALL MINNESOTASEASONS.COM, TNC, USDA-FS, USFWS, OR MNDNR BE LIABLE FOR ANY DIRECT, INDIRECT, INCIDENTAL, SPECIAL, EXEMPLARY, OR CONSEQUENTIAL DAMAGES (INCLUDING, BUT NOT LIMITED TO, PROCUREMENT OF SUBSTITUTE GOODS OR SERVICES; LOSS OF USE, DATA, OR PROFITS; OR BUSINESS INTERRUPTION) HOWEVER CAUSED AND ON ANY THEORY OF LIABILITY, WHETHER IN CONTRACT, STRICT LIABILITY, OR TORT (INCLUDING NEGLIGENCE OR OTHERS) ARISING IN ANY WAY OUT OF THE USE OF THIS DATA, EVEN IF ADVISED OF THE POSSIBILITY OF SUCH DAMAGE OR FOR ANY CLAIM BY ANY OTHER PARTY.

Your use of the data is acceptance on your part of the terms and conditions set forth herein.