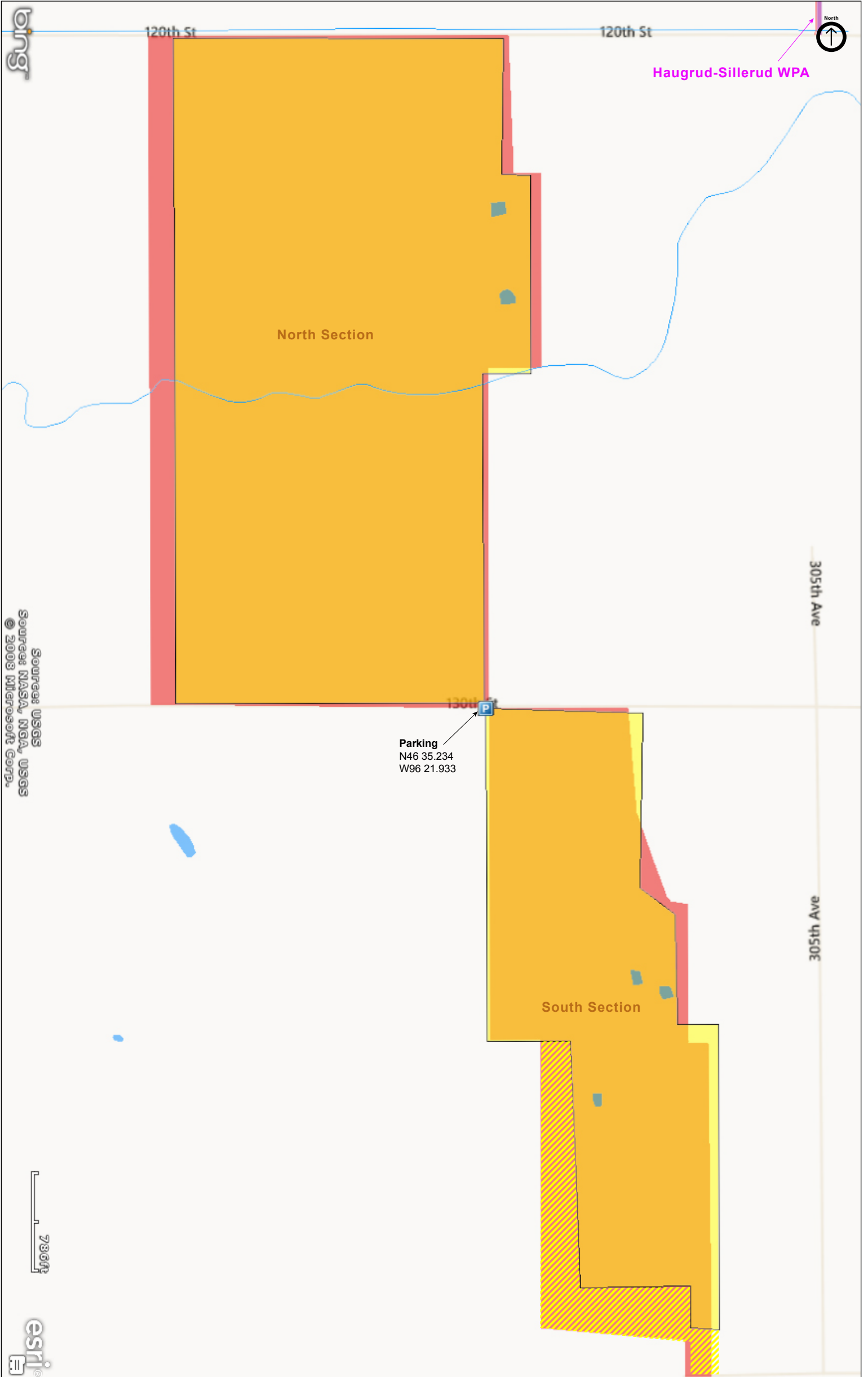




Richard M. & Mathilde Rice Elliott SNA

Wilkin County



Source: USGS
Source: NASA, NGA, USGS
© 2008 Microsoft Corp.

Richard M. & Mathilde Rice Elliott SNA

Directions and Notes from Minnesota DNR

From Rothsay 7 miles NW on Co Hwy 52, then 1.5 miles E on Co Rd 188. Park on field road on S, or road shoulder.

This site has no maintained trails or other recreational facilities.

This site is owned by The Nature Conservancy.

Directions and Notes from The Nature Conservancy

From Barnesville, go south four miles on Highway 52 to County Road 188. Turn east and go one mile to the southwest corner of the preserve. Continue one-half a mile to a pull-off on the south side of the road to park.

Notes from MinnesotaSeasons.com

Parking

N46 35.234, W96 21.933

Wet Prairie

The surface of this wet prairie is uneven. There are innumerable small depressions, some no more than 18" in diameter, with standing water ankle deep or deeper. They are partially or completely hidden from view by grasses and forbs. Attempts to avoid them will be met with limited success. Waterproof footwear is highly recommended.

SNA Boundary

The map on the Minnesota DNR Web page for the south section of this site is incorrect. It does not match the boundary as defined by SNA boundary signs on the site. The MinnesotaSeasons.com map of the south section (above) includes a 24 acre parcel that does not appear on the DNR map but is within the boundary signs.

DISCLAIMER OF WARRANTIES AND LIMITATIONS OF LIABILITY

MinnesotaSeasons.com, The Nature Conservancy, U.S. Department of Agriculture, Forest Service, U.S. Fish and Wildlife Service, the state of Minnesota, the Minnesota Department of Natural Resources, and their employees, make no representations or warranties, express or implied, with respect to the use of or reliance on the data provided herewith, regardless of its format or means of transmission. There are no guarantees or representations to the user as to the accuracy, currency, completeness, suitability or reliability of this data for any purpose. THE USER ACCEPTS THE DATA AND/OR SOFTWARE "AS IS" AND ASSUMES ALL RISKS ASSOCIATED WITH ITS USE.

IN NO EVENT SHALL MINNESOTASEASONS.COM, TNC, USDA-FS, USFWS, OR MNDNR BE LIABLE FOR ANY DIRECT, INDIRECT, INCIDENTAL, SPECIAL, EXEMPLARY, OR CONSEQUENTIAL DAMAGES (INCLUDING, BUT NOT LIMITED TO, PROCUREMENT OF SUBSTITUTE GOODS OR SERVICES; LOSS OF USE, DATA, OR PROFITS; OR BUSINESS INTERRUPTION) HOWEVER CAUSED AND ON ANY THEORY OF LIABILITY, WHETHER IN CONTRACT, STRICT LIABILITY, OR TORT (INCLUDING NEGLIGENCE OR OTHERS) ARISING IN ANY WAY OUT OF THE USE OF THIS DATA, EVEN IF ADVISED OF THE POSSIBILITY OF SUCH DAMAGE OR FOR ANY CLAIM BY ANY OTHER PARTY.

Your use of the data is acceptance on your part of the terms and conditions set forth herein.