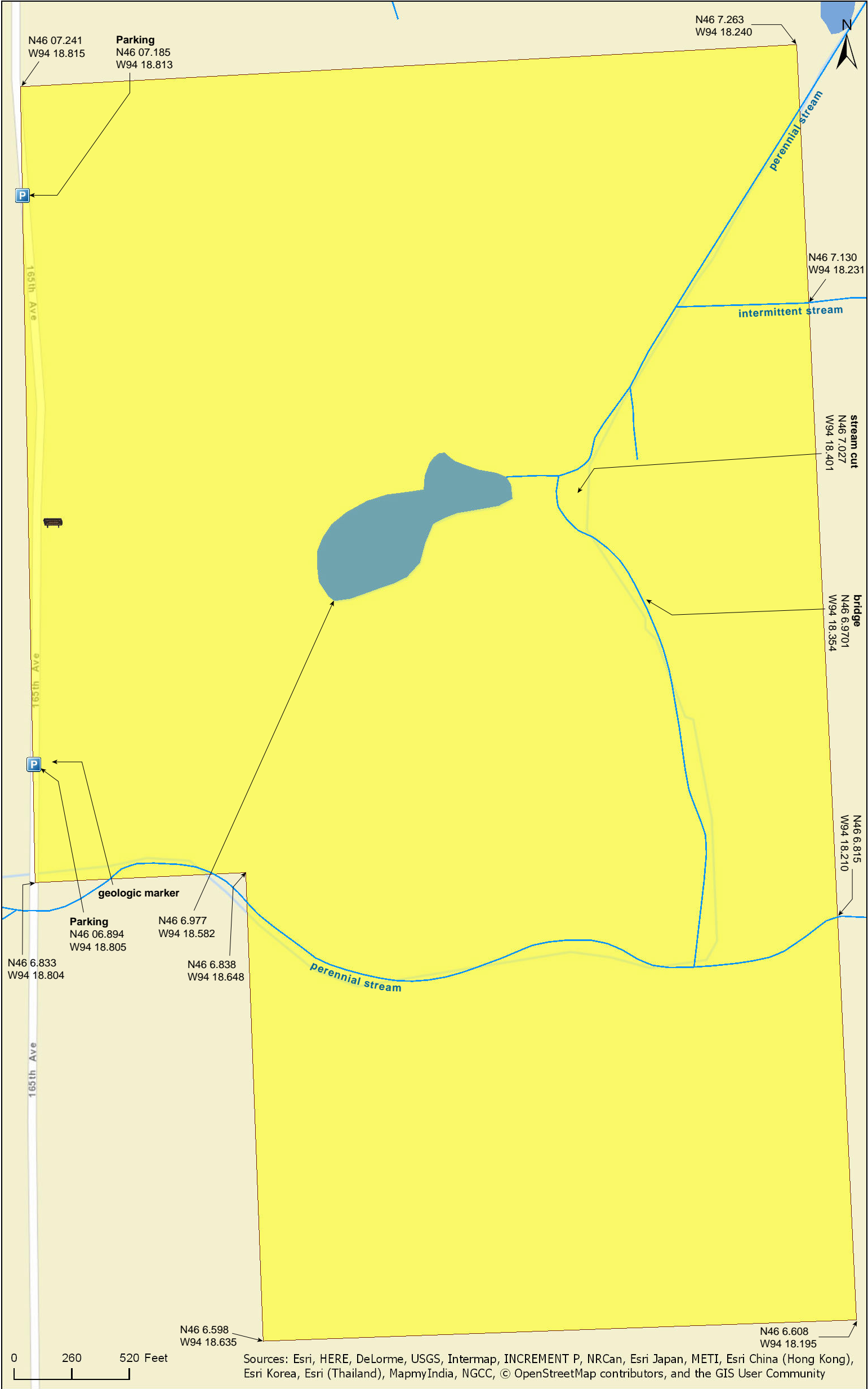




Ripley Esker SNA

Morrison County



Sources: Esri, HERE, DeLorme, USGS, Intermap, INCREMENT P, NRCan, Esri Japan, METI, Esri China (Hong Kong), Esri Korea, Esri (Thailand), MapmyIndia, NGCC, © OpenStreetMap contributors, and the GIS User Community

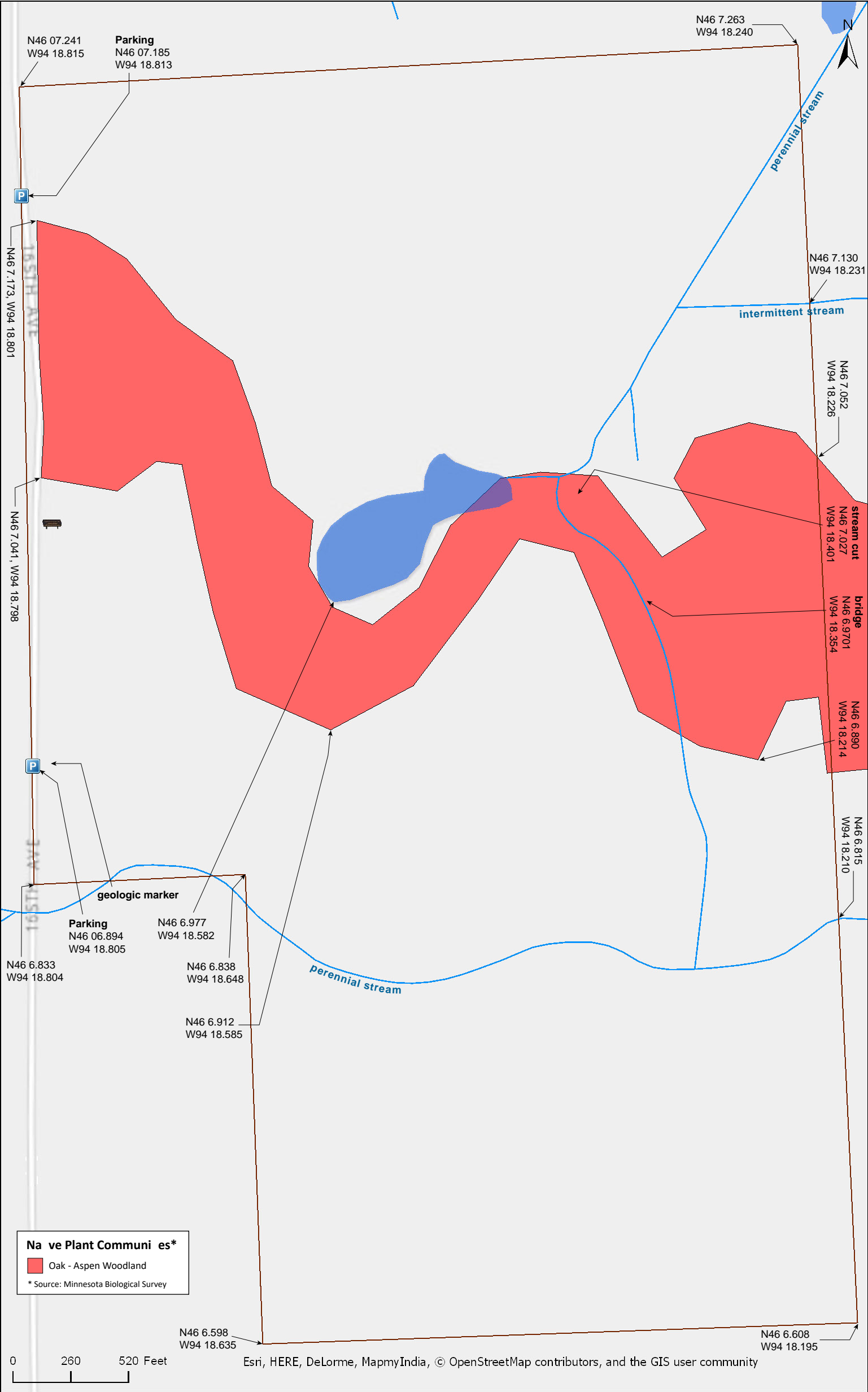
Ripley Esker SNA

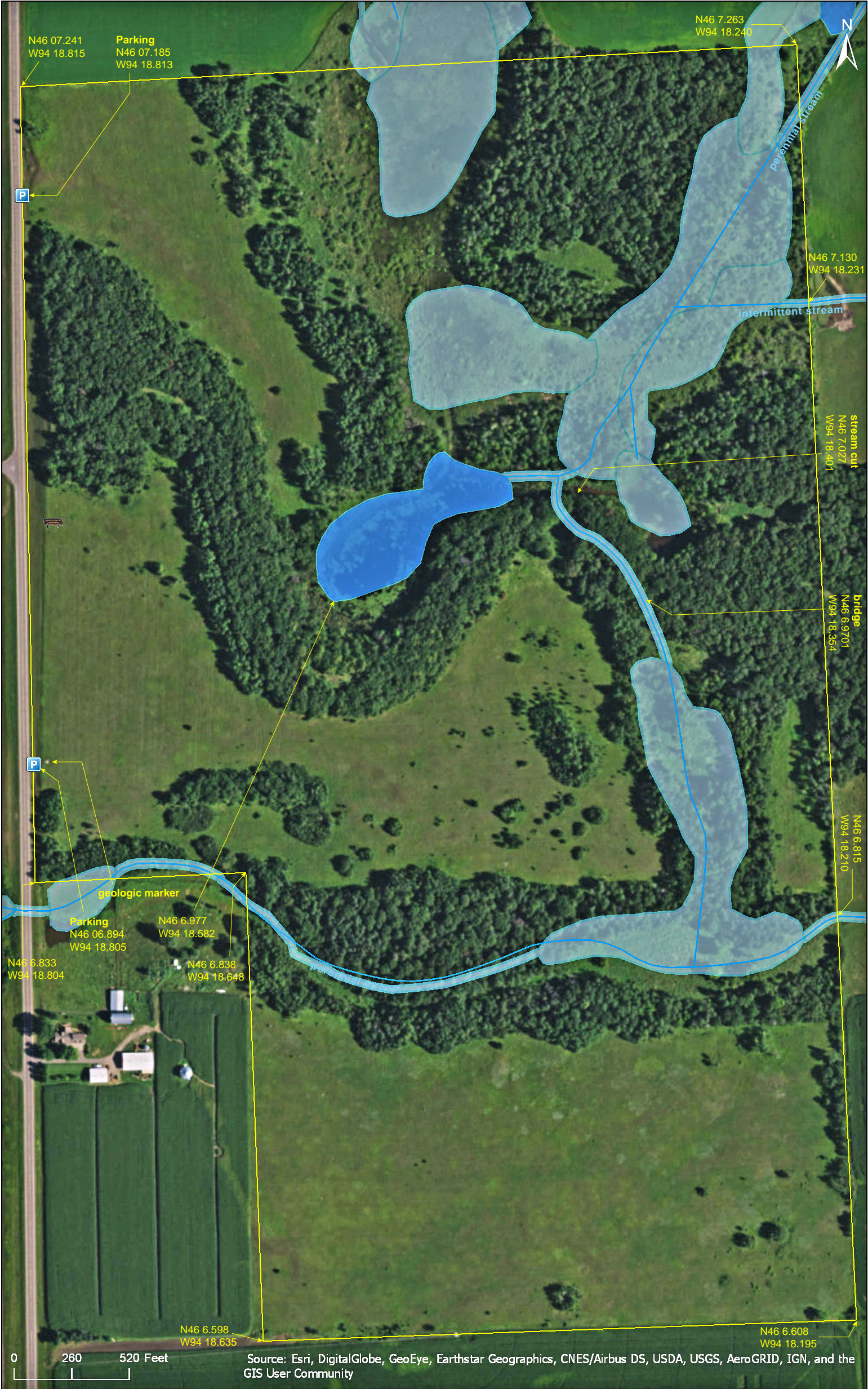
Morrison County



Ripley Esker SNA

Morrison County





Ripley Esker SNA

Directions and Notes from Minnesota DNR

Directions: From Little Falls 7 miles N on MN Hwy 371, then 0.7 mile E on Co Hwy 48, then 1.4 miles N on Co Rd 282. Park in pull-off on E.

Lat/Lon: 46.119758, -94.313551

This site has no maintained trails or other recreational facilities.

Notes from MinnesotaSeasons.com

North Parking

N46 7.185, W94 18.813

South Parking and Geologic Marker

N46 6.894, W94 18.805

No maintained hiking trails. A well-worn footpath follows the ridge of the esker.

Stream Crossing

The esker is cut at one point by a stream that is too wide to step across. About 175 yards south of the stream cut there is a makeshift bridge crossing the stream. The bridge is made of many logs and branches and includes a hand rail.

Drought

The southernmost part of the SNA is a prairie and oak savanna remnant with very few surviving bur oaks. A dozen or more eastern white pine trees are scattered across the savanna. They appear to have been planted in the last 3 to 5 years. In the spring of 2013, all were dead or dying, possibly victims of the drought of 2011-12.

DISCLAIMER OF WARRANTIES AND LIMITATIONS OF LIABILITY

MinnesotaSeasons.com, The Nature Conservancy, U.S. Department of Agriculture, Forest Service, U.S. Fish and Wildlife Service, the state of Minnesota, the Minnesota Department of Natural Resources, and their employees, make no representations or warranties, express or implied, with respect to the use of or reliance on the data provided herewith, regardless of its format or means of transmission. There are no guarantees or representations to the user as to the accuracy, currency, completeness, suitability or reliability of this data for any purpose. THE USER ACCEPTS THE DATA AND/OR SOFTWARE "AS IS" AND ASSUMES ALL RISKS ASSOCIATED WITH ITS USE.

IN NO EVENT SHALL MINNESOTASEASONS.COM, TNC, USDA-FS, USFWS, OR MNDNR BE LIABLE FOR ANY DIRECT, INDIRECT, INCIDENTAL, SPECIAL, EXEMPLARY, OR CONSEQUENTIAL DAMAGES (INCLUDING, BUT NOT LIMITED TO, PROCUREMENT OF SUBSTITUTE GOODS OR SERVICES; LOSS OF USE, DATA, OR PROFITS; OR BUSINESS INTERRUPTION) HOWEVER CAUSED AND ON ANY THEORY OF LIABILITY, WHETHER IN CONTRACT, STRICT LIABILITY, OR TORT (INCLUDING NEGLIGENCE OR OTHERS) ARISING IN ANY WAY OUT OF THE USE OF THIS DATA, EVEN IF ADVISED OF THE POSSIBILITY OF SUCH DAMAGE OR FOR ANY CLAIM BY ANY OTHER PARTY.

Your use of the data is acceptance on your part of the terms and conditions set forth herein.