

Sandpiper Prairie SNA

Norman County



N47 15.153
W96 24.408

N47 15.156
W96 23.781

Parking
N47 14.939
W96 24.411

N47 14.622
W96 24.850

N47 14.625
W96 24.407

N47 14.295
W96 24.846

N47 14.295
W96 24.846

N47 13.851
W96 24.419

N47 13.852
W96 23.784

0 500 1,000 Feet

Source: Esri, DigitalGlobe, GeoEye, Earthstar Geographics, CNES/Airbus DS, USDA, USGS, AeroGRID, IGN, and the GIS User Community

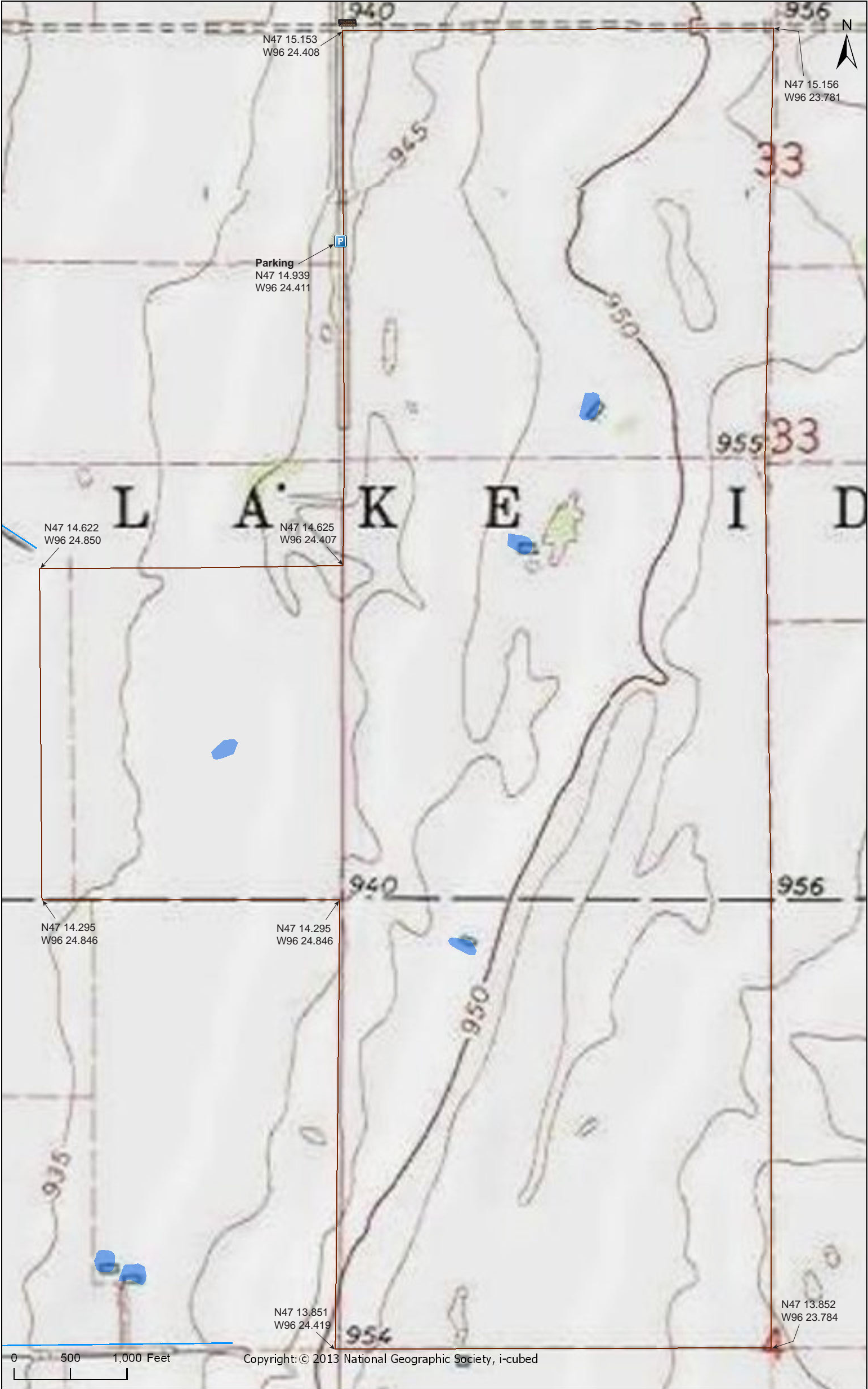
Sandpiper Prairie SNA

Norman County



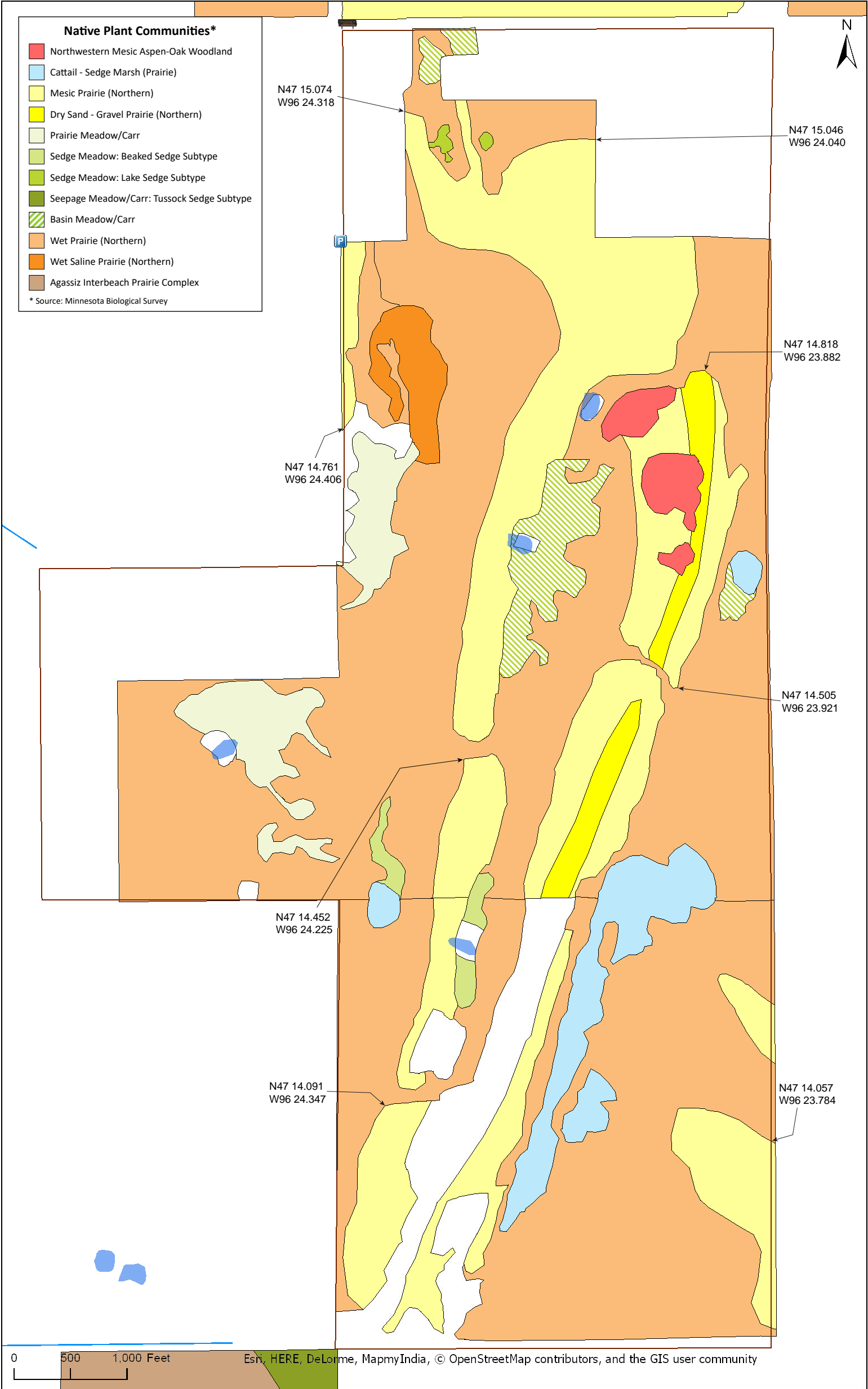
Sandpiper Prairie SNA

Norman County



Sandpiper Prairie SNA

Norman County





Sandpiper Prairie SNA

Directions and Notes from Minnesota DNR

Directions: From Twin Valley, 6.5 mi W on Co Rd 27, then 1.5 mile S on 310th St. Park on pull-off on E.

Lat/Lon: 47.248989, -96.406862

This site has no maintained trails or other recreational facilities. This site is in an Audubon Important Bird Area.

Notes from MinnesotaSeasons.com

Parking

Field Access

N47 14.939, W96 24.411

DISCLAIMER OF WARRANTIES AND LIMITATIONS OF LIABILITY

MinnesotaSeasons.com, The Nature Conservancy, U.S. Department of Agriculture, Forest Service, U.S. Fish and Wildlife Service, the state of Minnesota, the Minnesota Department of Natural Resources, and their employees, make no representations or warranties, express or implied, with respect to the use of or reliance on the data provided herewith, regardless of its format or means of transmission. There are no guarantees or representations to the user as to the accuracy, currency, completeness, suitability or reliability of this data for any purpose. THE USER ACCEPTS THE DATA AND/OR SOFTWARE "AS IS" AND ASSUMES ALL RISKS ASSOCIATED WITH ITS USE.

IN NO EVENT SHALL MINNESOTASEASONS.COM, TNC, USDA-FS, USFWS, OR MNDNR BE LIABLE FOR ANY DIRECT, INDIRECT, INCIDENTAL, SPECIAL, EXEMPLARY, OR CONSEQUENTIAL DAMAGES (INCLUDING, BUT NOT LIMITED TO, PROCUREMENT OF SUBSTITUTE GOODS OR SERVICES; LOSS OF USE, DATA, OR PROFITS; OR BUSINESS INTERRUPTION) HOWEVER CAUSED AND ON ANY THEORY OF LIABILITY, WHETHER IN CONTRACT, STRICT LIABILITY, OR TORT (INCLUDING NEGLIGENCE OR OTHERS) ARISING IN ANY WAY OUT OF THE USE OF THIS DATA, EVEN IF ADVISED OF THE POSSIBILITY OF SUCH DAMAGE OR FOR ANY CLAIM BY ANY OTHER PARTY.

Your use of the data is acceptance on your part of the terms and conditions set forth herein.