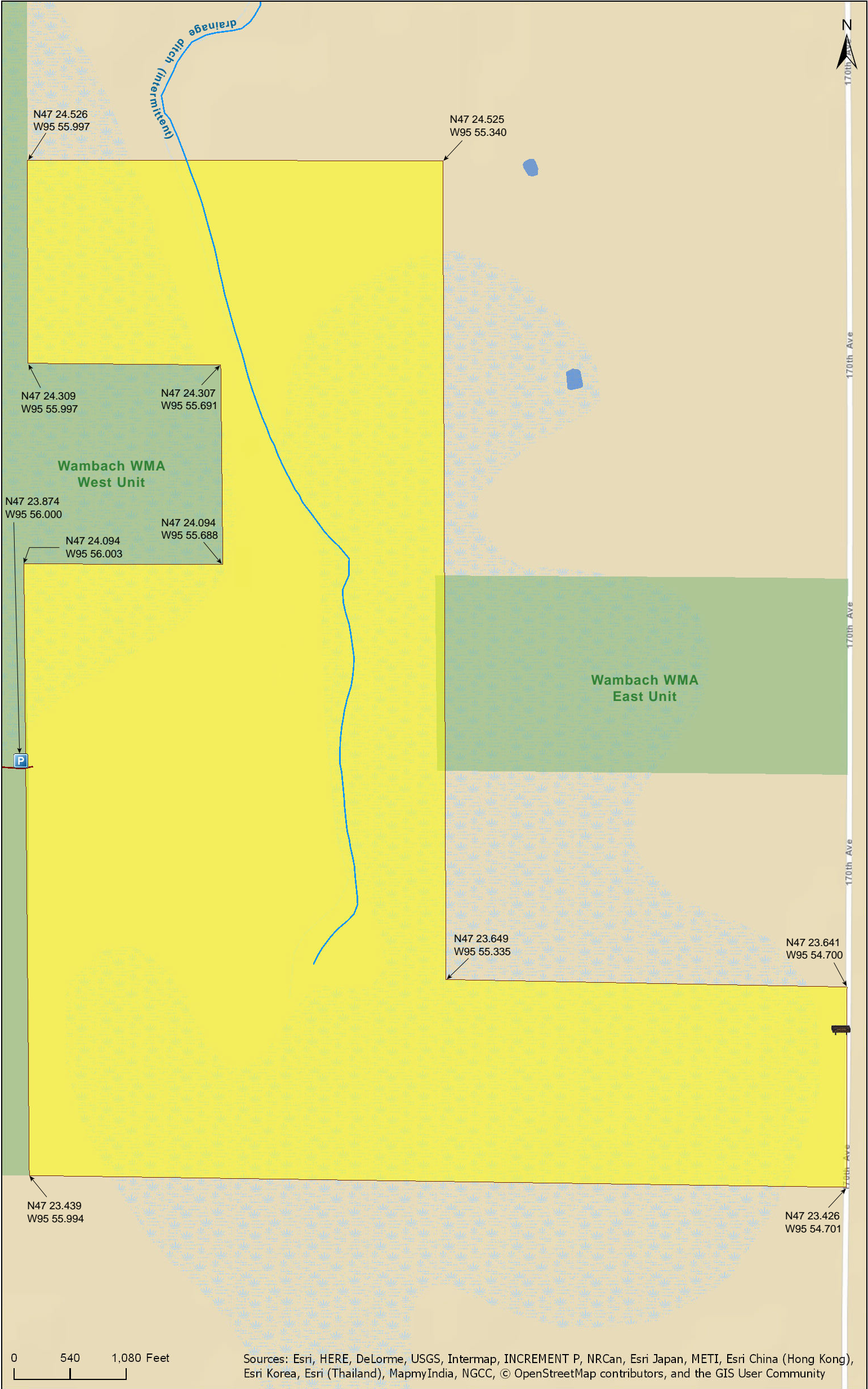


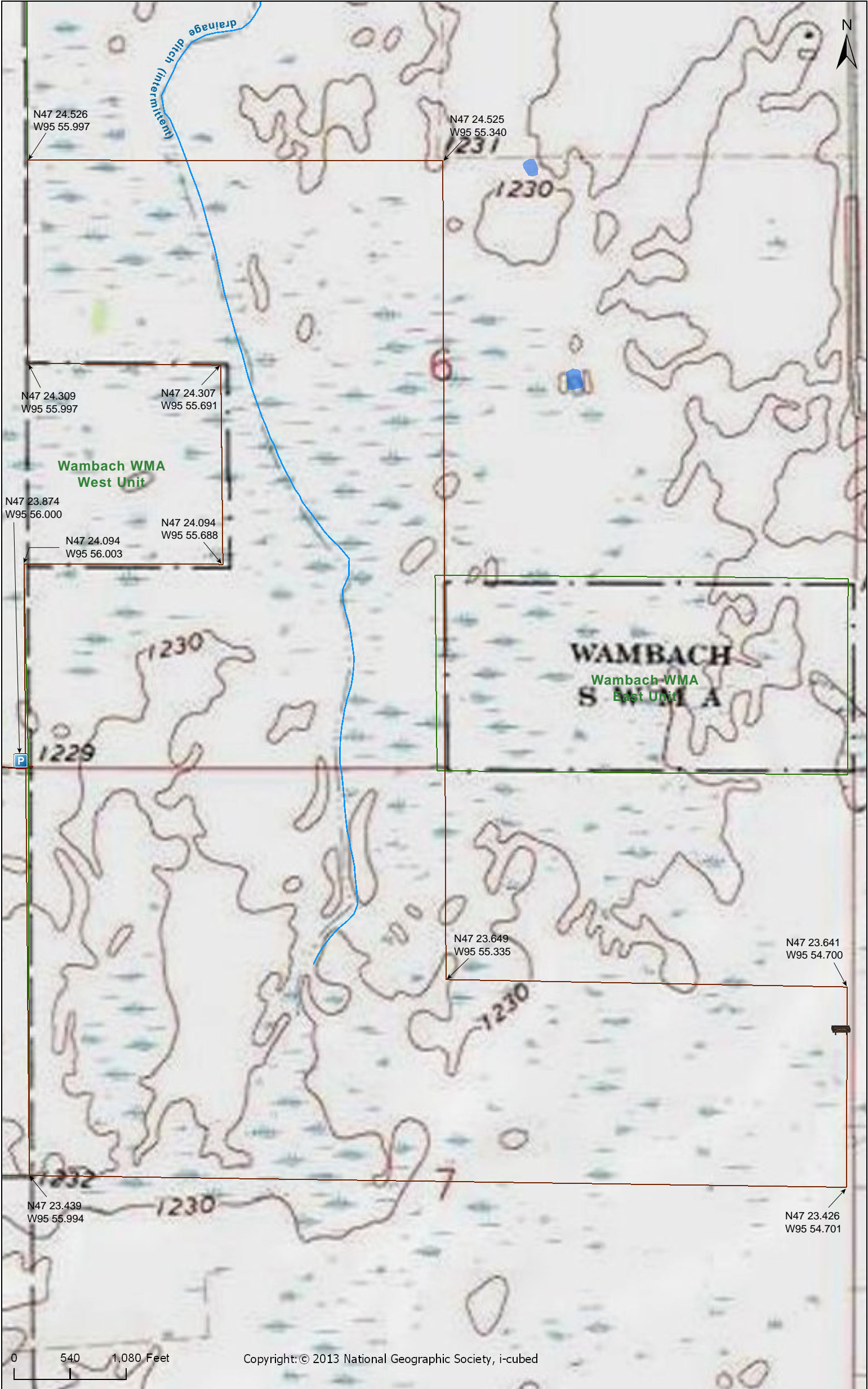
0 540 1,080 Feet

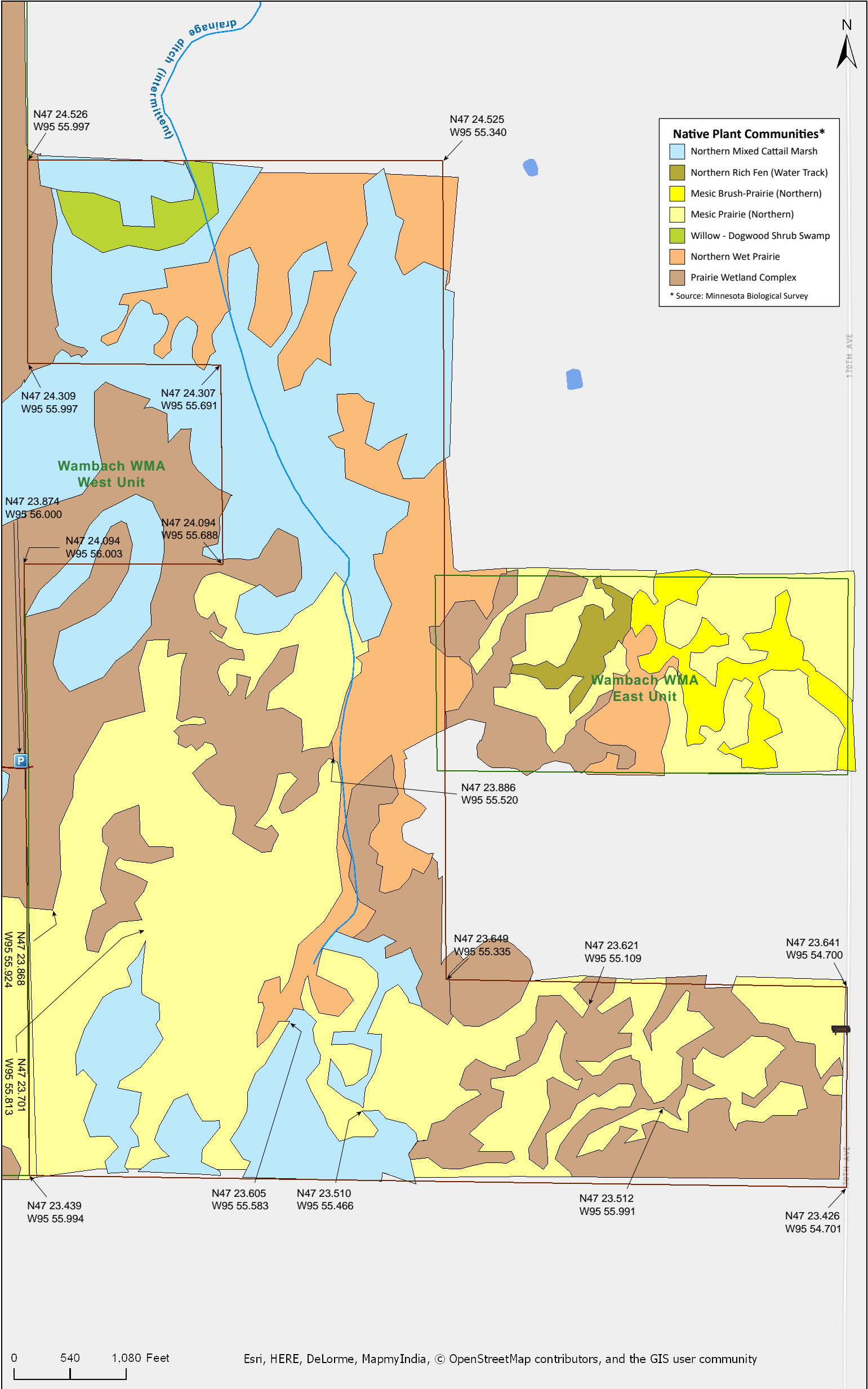
Source: Esri, DigitalGlobe, GeoEye, Earthstar Geographics, CNES/Airbus DS, USDA, USGS, AeroGRID, IGN, and the GIS User Community



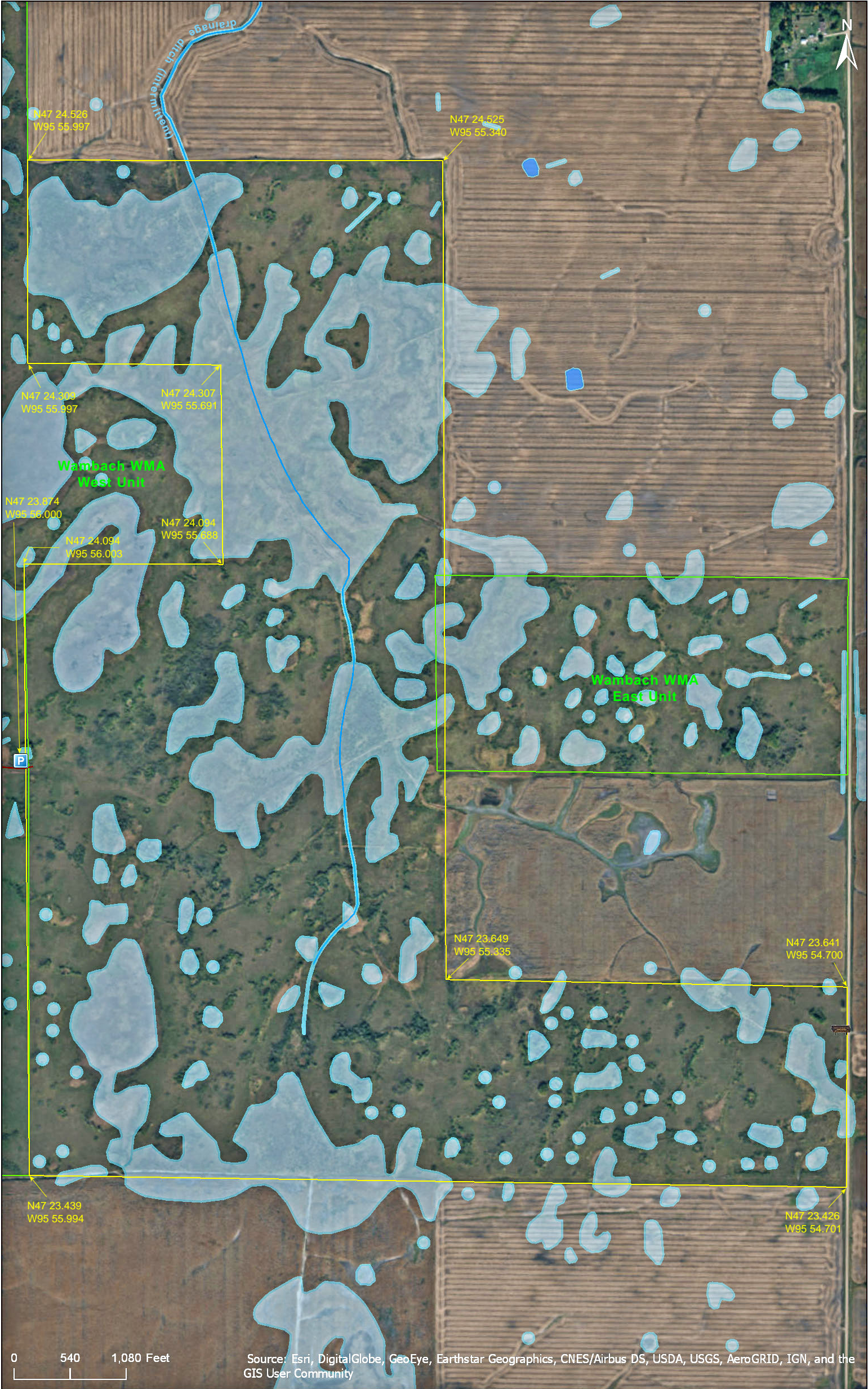














# Santee Prairie SNA

## **Directions and Notes from Minnesota DNR**

**Directions:** From Mahanomen 5 miles N on US Hwy 59, then 2.5 miles E on Twp Rd 184. Continue E on unimproved/field road 1 mile. Park and hike E into site.

**Lat/Lon:** 47.397919, -95.933468

This site has no maintained trails or other recreational facilities. Wambach WMA is adjacent to this site.

## **Notes from MinnesotaSeasons.com**

### **Parking**

First Gate  
N47 23.881, W95 57.287

Second Gate  
N47 23.881, W95 57.569

The parking area shown on the Minnesota DNR Web page for this site is inaccessible by car. It is at the end of a DNR public road. However, there are two gates across this road. The first is at the start of the road near the intersection of Township Road 184 (170th St.) and 150th Ave. On two recent trips (August, 2013 and August, 2016) the gate was unlocked. On two previous trips (August and September, 2011) the gate was locked. The second gate is 0.7 mile east on the DNR road. During four visits to the SNA over five years this gate was always locked.

If the first gate is locked, park on the south side of the DNR road near the gate, being careful to avoid blocking the gate. Hike east on the two-track road one mile to the SNA boundary marker.

If the first gate is unlocked, drive east on the DNR road ½ mile to the Wambach WMA parking area. Park here and walk ½ mile east to the SNA boundary marker.

The wood sign for this SNA is at the east boundary bordering 170th Ave. There is no parking area near this sign.

## **DISCLAIMER OF WARRANTIES AND LIMITATIONS OF LIABILITY**

MinnesotaSeasons.com, The Nature Conservancy, U.S. Department of Agriculture, Forest Service, U.S. Fish and Wildlife Service, the state of Minnesota, the Minnesota Department of Natural Resources, and their employees, make no representations or warranties, express or implied, with respect to the use of or reliance on the data provided herewith, regardless of its format or means of transmission. There are no guarantees or representations to the user as to the accuracy, currency, completeness, suitability or reliability of this data for any purpose. THE USER ACCEPTS THE DATA AND/OR SOFTWARE "AS IS" AND ASSUMES ALL RISKS ASSOCIATED WITH ITS USE.

IN NO EVENT SHALL MINNESOTASEASONS.COM, TNC, USDA-FS, USFWS, OR MNDNR BE LIABLE FOR ANY DIRECT, INDIRECT, INCIDENTAL, SPECIAL, EXEMPLARY, OR CONSEQUENTIAL DAMAGES (INCLUDING, BUT NOT LIMITED TO, PROCUREMENT OF SUBSTITUTE GOODS OR SERVICES; LOSS OF USE, DATA, OR PROFITS; OR BUSINESS INTERRUPTION) HOWEVER CAUSED AND ON ANY THEORY OF LIABILITY, WHETHER IN CONTRACT, STRICT LIABILITY, OR TORT (INCLUDING NEGLIGENCE OR OTHERS) ARISING IN ANY WAY OUT OF THE USE OF THIS DATA, EVEN IF ADVISED OF THE POSSIBILITY OF SUCH DAMAGE OR FOR ANY CLAIM BY ANY OTHER PARTY.

Your use of the data is acceptance on your part of the terms and conditions set forth herein.