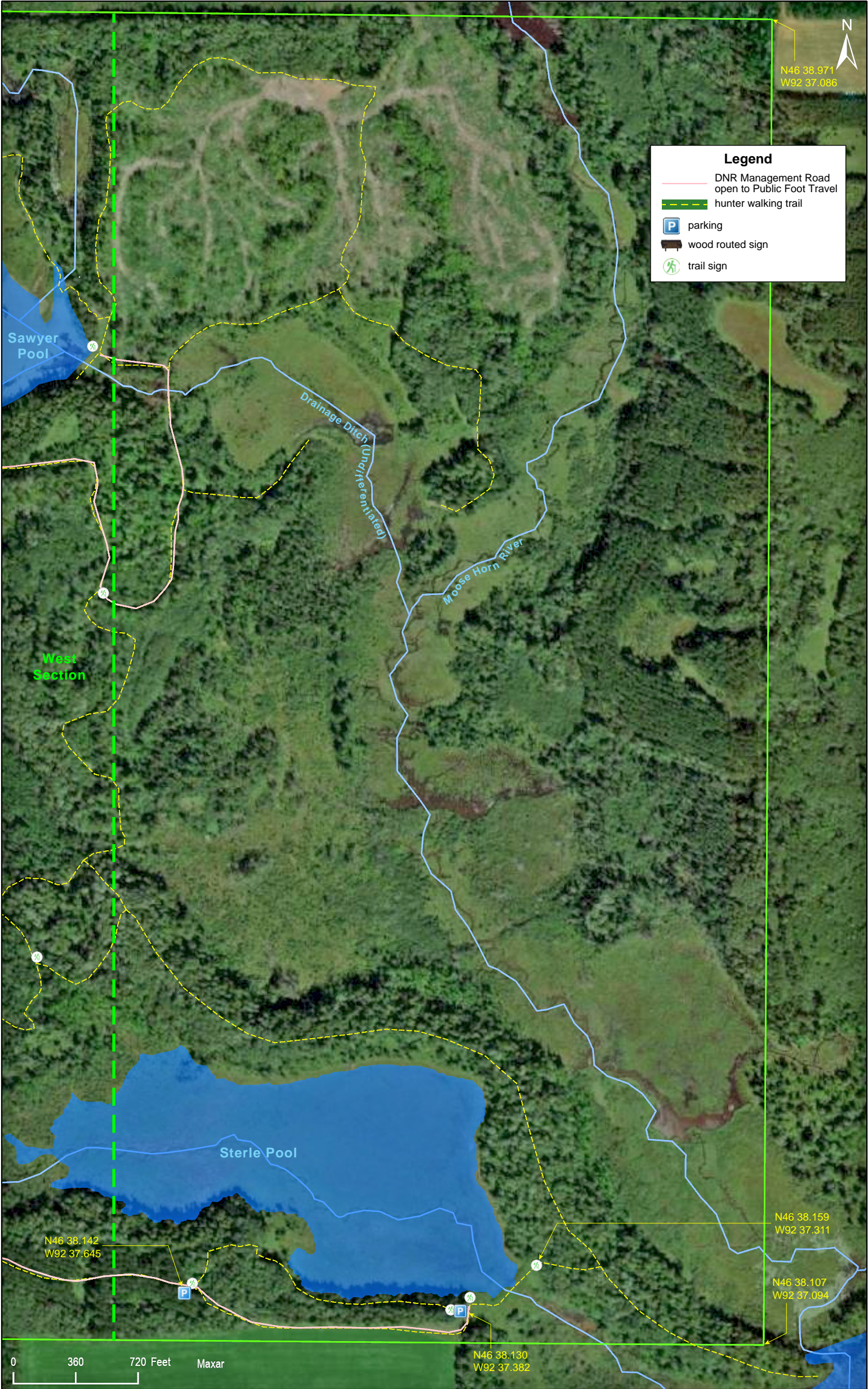


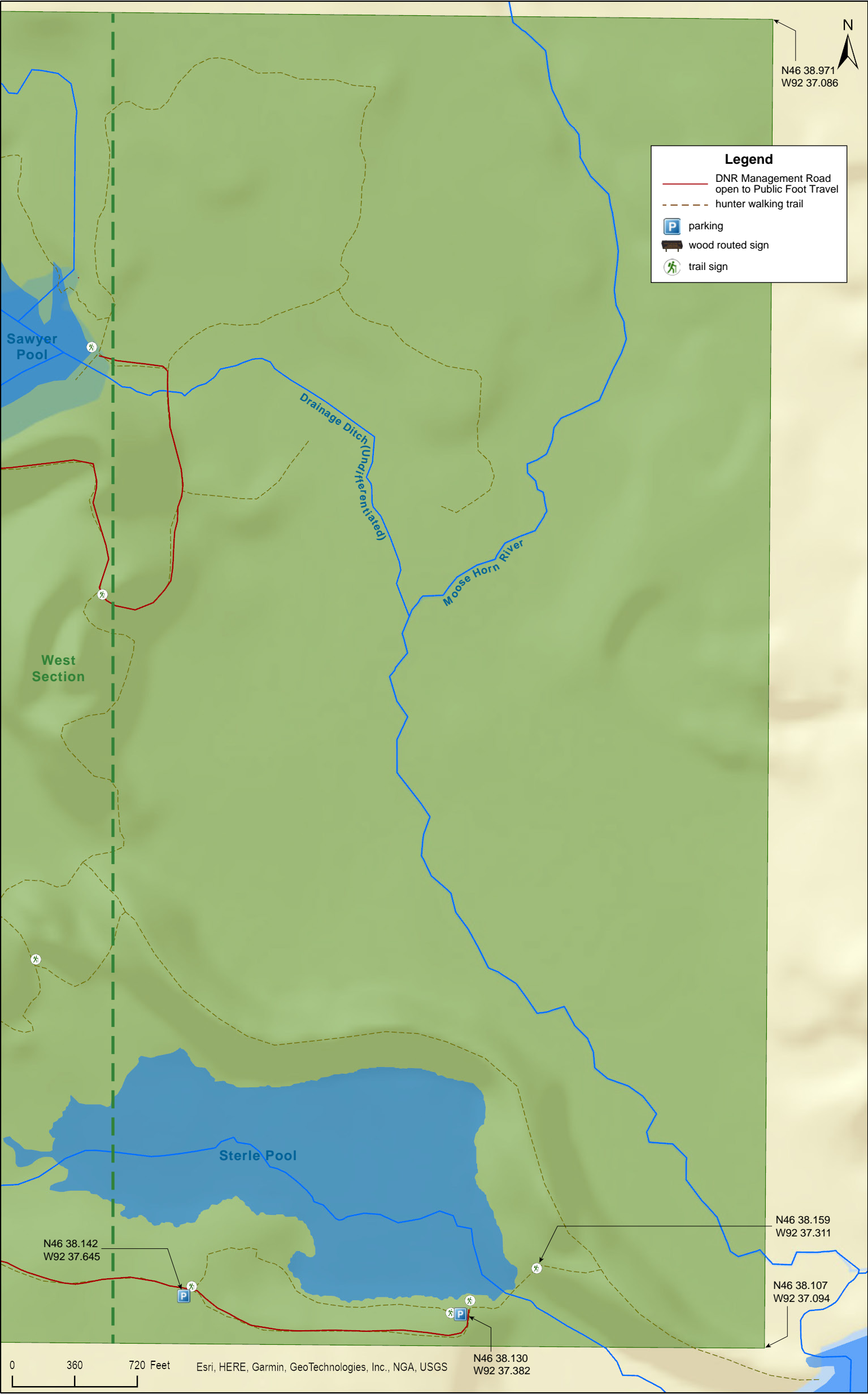
Sawyer WMA
East Section

Carlton County



Sawyer WMA
East Section

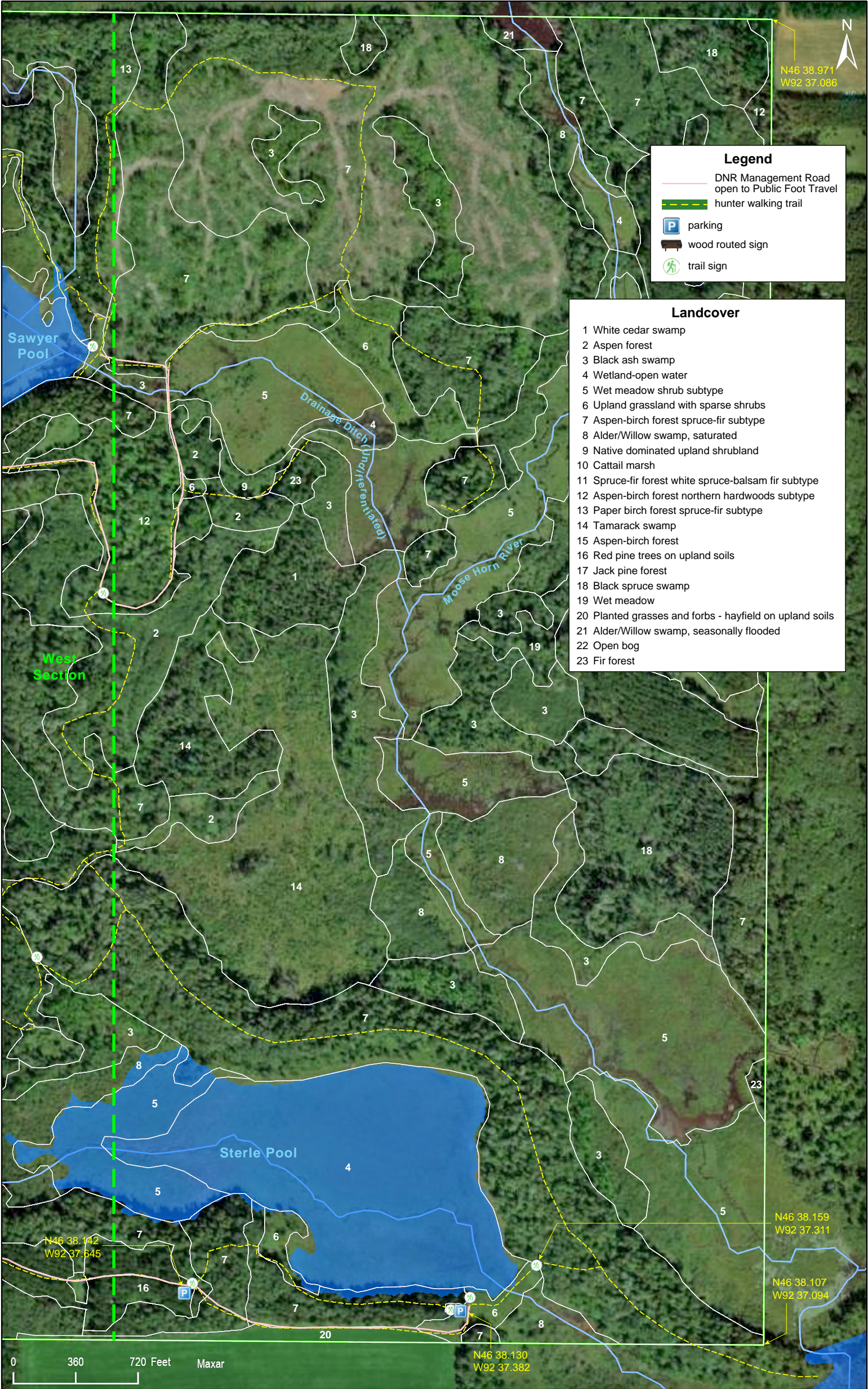
Carlton County



Sawyer WMA
East Section

Carlton County





Legend

- DNR Management Road open to Public Foot Travel
- hunter walking trail
- parking
- wood routed sign
- trail sign

Landcover

- 1 White cedar swamp
- 2 Aspen forest
- 3 Black ash swamp
- 4 Wetland-open water
- 5 Wet meadow shrub subtype
- 6 Upland grassland with sparse shrubs
- 7 Aspen-birch forest spruce-fir subtype
- 8 Alder/Willow swamp, saturated
- 9 Native dominated upland shrubland
- 10 Cattail marsh
- 11 Spruce-fir forest white spruce-balsam fir subtype
- 12 Aspen-birch forest northern hardwoods subtype
- 13 Paper birch forest spruce-fir subtype
- 14 Tamarack swamp
- 15 Aspen-birch forest
- 16 Red pine trees on upland soils
- 17 Jack pine forest
- 18 Black spruce swamp
- 19 Wet meadow
- 20 Planted grasses and forbs - hayfield on upland soils
- 21 Alder/Willow swamp, seasonally flooded
- 22 Open bog
- 23 Fir forest



Sawyer WMA East Section

Directions and Notes from Minnesota DNR

Directions

From Sawyer, go 2 1/4 miles S and W on CSAH 7.

Special Restrictions

Sterle Pool Trail gate is open to vehicle traffic from August 1 till December 20 each year to provide access for hunters. The gate is closed the remainder of year to protect the road and nesting wildlife (foot traffic is still allowed).

Notes from MinnesotaSeasons.com

Parking

There are eight parking lots on the west and south sides of this WMA.

North

A DNR Minimum Maintenance Public Road near the northwest corner of the WMA leads to four parking lots and a water access to an unnamed lake.

DNR Minimum Maintenance Public Road
N46 38.487, W92 38.217

Parking Lot - Gravel
N46 38.665, W92 38.205

Parking Lot - Gravel
N46 38.623, W92 38.163

Parking Lot - Gravel
N46 38.555, W92 38.244

Parking Lot - Natural/Grass Surface
N46 38.495, W92 38.196

South

There is a DNR Management Road open to Public Foot Travel near the southeast corner of the WMA The road is gated and the gated is locked except during hunting season, August 1 to December 20. There is one parking lot by the gate, one at the end of the road at a water access to Sterle Pool, and one in a wooded area halfway between the other two.

Parking Lot - Natural/Grass Surface
N46 38.173, W92 37.962

Parking Lot - Natural/Grass Surface
N46 38.142, W92 37.645

Parking Lot - Gravel
N46 38.130, W92 37.382

Central

There is a natural/grass surface parking lot on the east side of County Highway 7 at the west boundary of the WMA.

Parking Lot - Natural/Grass Surface
N46 38.361, W92 38.058

Eskers

There are two glacial ridges (eskers) in Sawyer WMA. In the northwest, Sawyer Esker follows the south shore of Sawyer Pool from east to west. In the south, Bob Lake Esker snakes around Searle Pool to the southeast corner of the WMA and continues a short distance to the north shore of Bob Lake. Hunter walking trails lead to and along the ridges of both eskers.

DISCLAIMER OF WARRANTIES AND LIMITATIONS OF LIABILITY

MinnesotaSeasons.com, The Nature Conservancy, U.S. Department of Agriculture, Forest Service, U.S. Fish and Wildlife Service, the state of Minnesota, the Minnesota Department of Natural Resources, and their employees, make no representations or warranties, express or implied, with respect to the use of or reliance on the data provided herewith, regardless of its format or means of transmission. There are no guarantees or representations to the user as to the accuracy, currency, completeness, suitability or reliability of this data for any purpose. THE USER ACCEPTS THE DATA AND/OR SOFTWARE "AS IS" AND ASSUMES ALL RISKS ASSOCIATED WITH ITS USE.

IN NO EVENT SHALL MINNESOTASEASONS.COM, TNC, USDA-FS, USFWS, OR MNDNR BE LIABLE FOR ANY DIRECT, INDIRECT, INCIDENTAL, SPECIAL, EXEMPLARY, OR CONSEQUENTIAL DAMAGES (INCLUDING, BUT NOT LIMITED TO, PROCUREMENT OF SUBSTITUTE GOODS OR SERVICES; LOSS OF USE, DATA, OR PROFITS; OR BUSINESS INTERRUPTION) HOWEVER CAUSED AND ON ANY THEORY OF LIABILITY, WHETHER IN CONTRACT, STRICT LIABILITY, OR TORT (INCLUDING NEGLIGENCE OR OTHERS) ARISING IN ANY WAY OUT OF THE USE OF THIS DATA, EVEN IF ADVISED OF THE POSSIBILITY OF SUCH DAMAGE OR FOR ANY CLAIM BY ANY OTHER PARTY.

Your use of the data is acceptance on your part of the terms and conditions set forth herein.