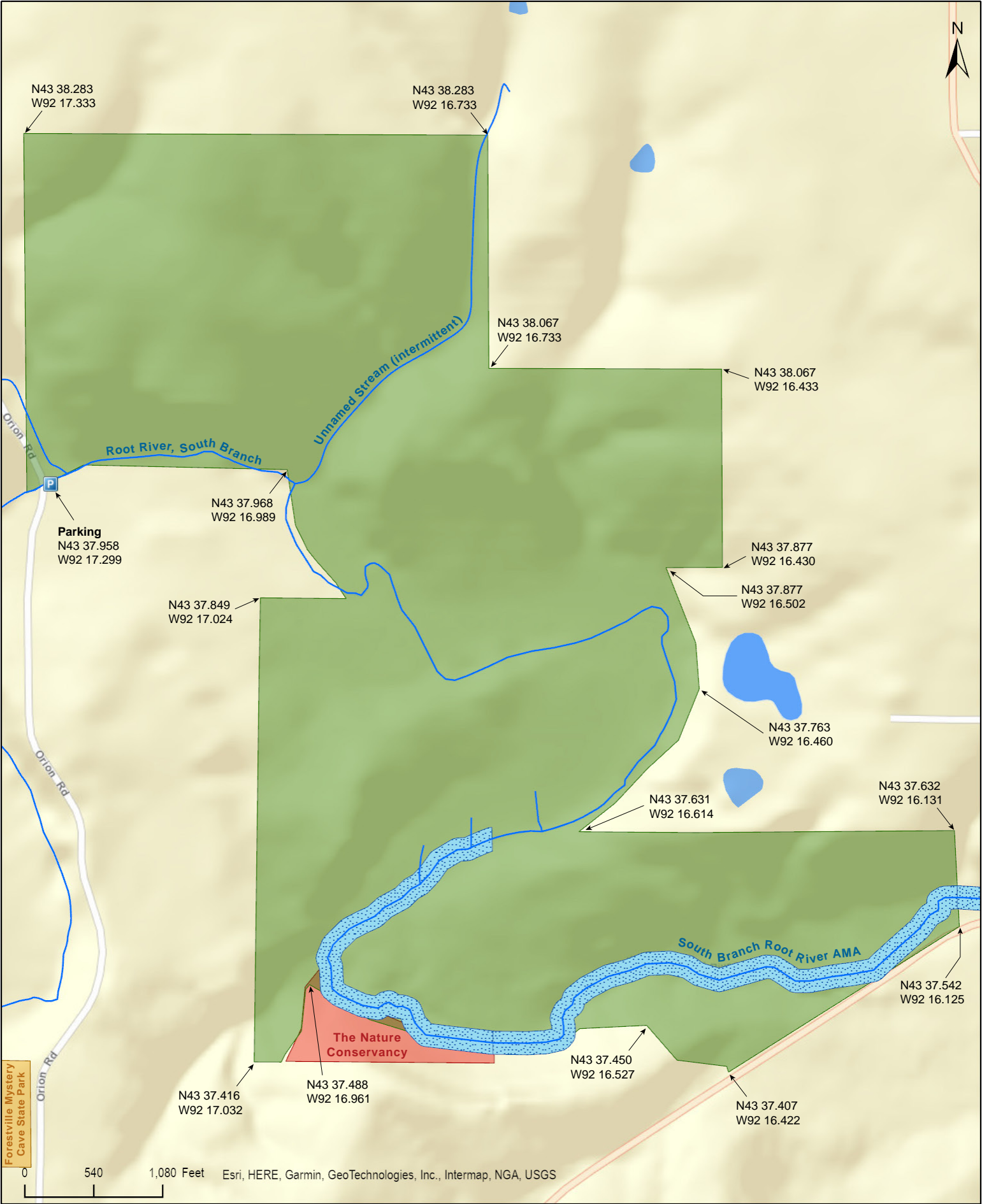




Seven Springs WMA

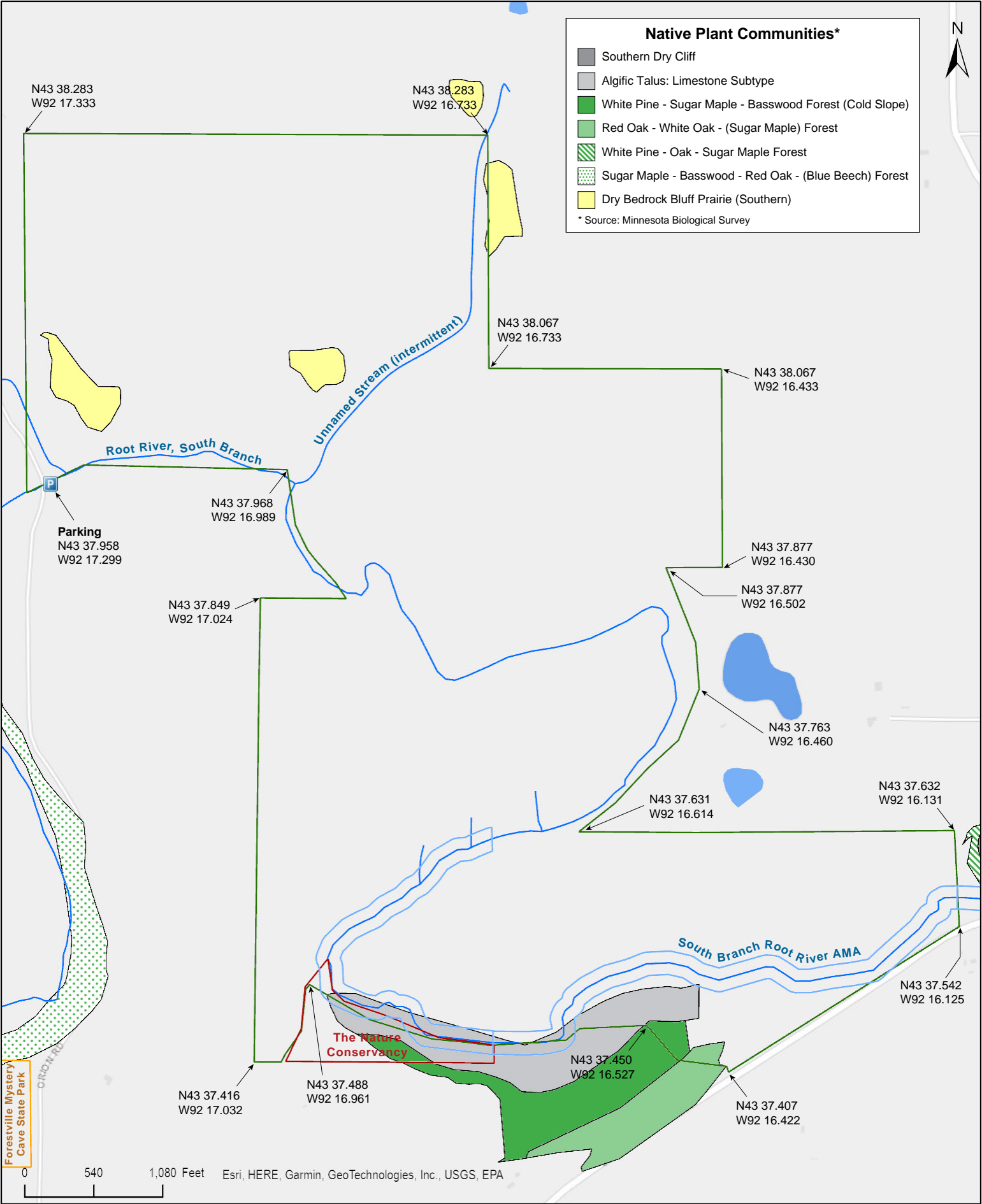
Fillmore County

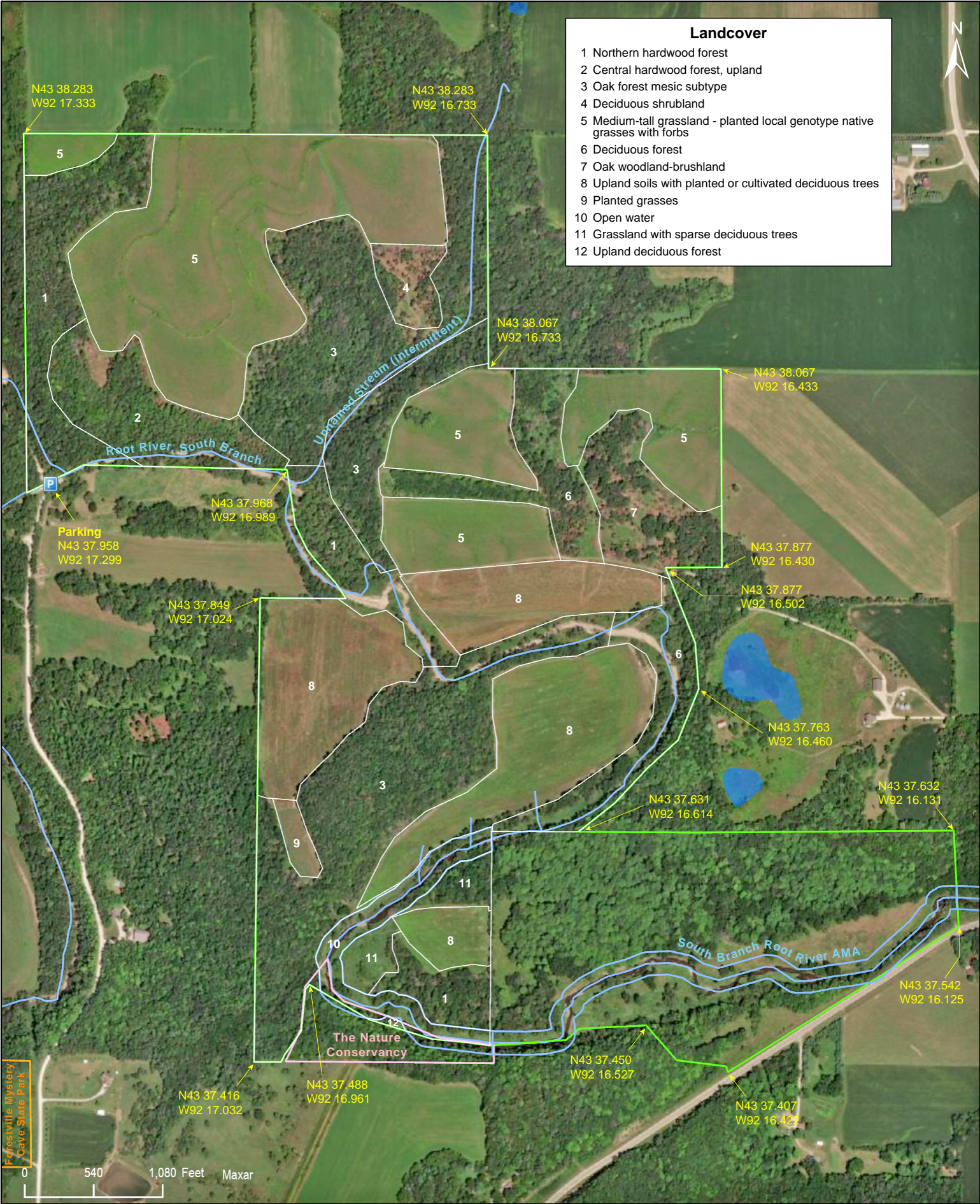




Seven Springs WMA

Fillmore County







Seven Springs WMA

Directions and Notes from Minnesota DNR

Directions

From Wykoff take County Road 5 for 4 miles south, turn right onto County Road 12 for 1 1/4 miles, turn left on to Orion Road for 1 mile to parking area next to stream.

Access is difficult from parking lot on west township road on north side of root river.

Description

This WMA is bluff top with planted native grasses on ridge tops, with oak and central hardwoods forest on the slopes and direct seeding of hardwood forest on floodplain cropland.

Notes from MinnesotaSeasons.com

Parking

N43 37.958, W92 17.294

Directions and Notes from The Nature Conservancy

Location

Portions of S 1/2 of Section 16 and Portions of N 1/2 of Section 21, Forestville Township, Fillmore County; 92°17'18"W 43°37'58"N (43.632637 -92.288317)

The Nature Conservancy preserved 272 acres in Fillmore County to protect springs and a trout stream connected to Forestville-Mystery Cave State Park.

The property, which also includes bluff and native prairie, is now owned and managed by Minnesota DNR as Seven Springs Wildlife Management Area.

DISCLAIMER OF WARRANTIES AND LIMITATIONS OF LIABILITY

MinnesotaSeasons.com, The Nature Conservancy, U.S. Department of Agriculture, Forest Service, U.S. Fish and Wildlife Service, the state of Minnesota, the Minnesota Department of Natural Resources, and their employees, make no representations or warranties, express or implied, with respect to the use of or reliance on the data provided herewith, regardless of its format or means of transmission. There are no guarantees or representations to the user as to the accuracy, currency, completeness, suitability or reliability of this data for any purpose. THE USER ACCEPTS THE DATA AND/OR SOFTWARE "AS IS" AND ASSUMES ALL RISKS ASSOCIATED WITH ITS USE.

IN NO EVENT SHALL MINNESOTASEASONS.COM, TNC, USDA-FS, USFWS, OR MNDNR BE LIABLE FOR ANY DIRECT, INDIRECT, INCIDENTAL, SPECIAL, EXEMPLARY, OR CONSEQUENTIAL DAMAGES (INCLUDING, BUT NOT LIMITED TO, PROCUREMENT OF SUBSTITUTE GOODS OR SERVICES; LOSS OF USE, DATA, OR PROFITS; OR BUSINESS INTERRUPTION) HOWEVER CAUSED AND ON ANY THEORY OF LIABILITY, WHETHER IN CONTRACT, STRICT LIABILITY, OR TORT (INCLUDING NEGLIGENCE OR OTHERS) ARISING IN ANY WAY OUT OF THE USE OF THIS DATA, EVEN IF ADVISED OF THE POSSIBILITY OF SUCH DAMAGE OR FOR ANY CLAIM BY ANY OTHER PARTY.

Your use of the data is acceptance on your part of the terms and conditions set forth herein.